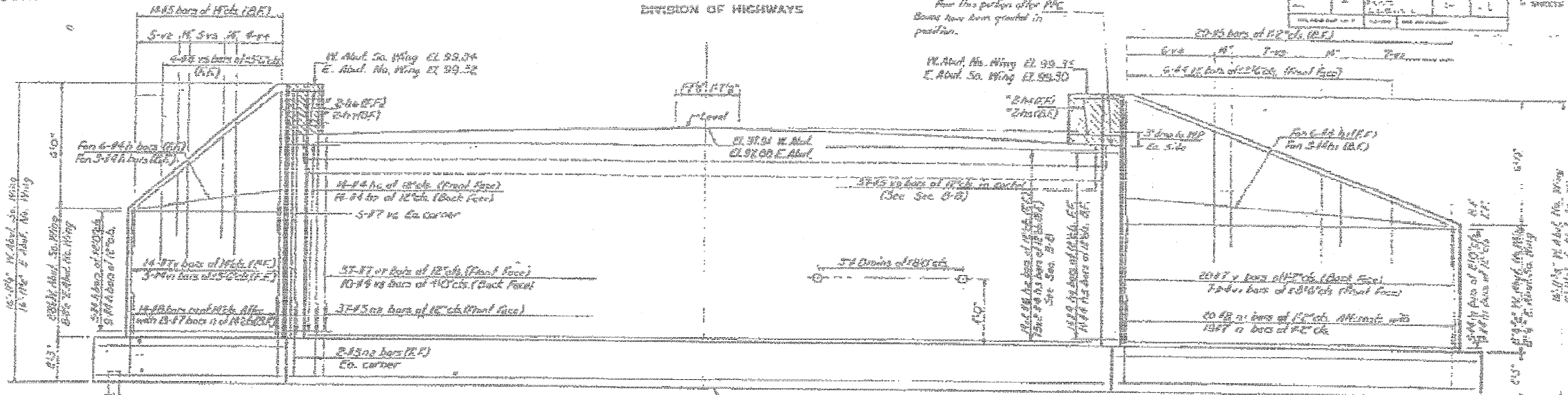


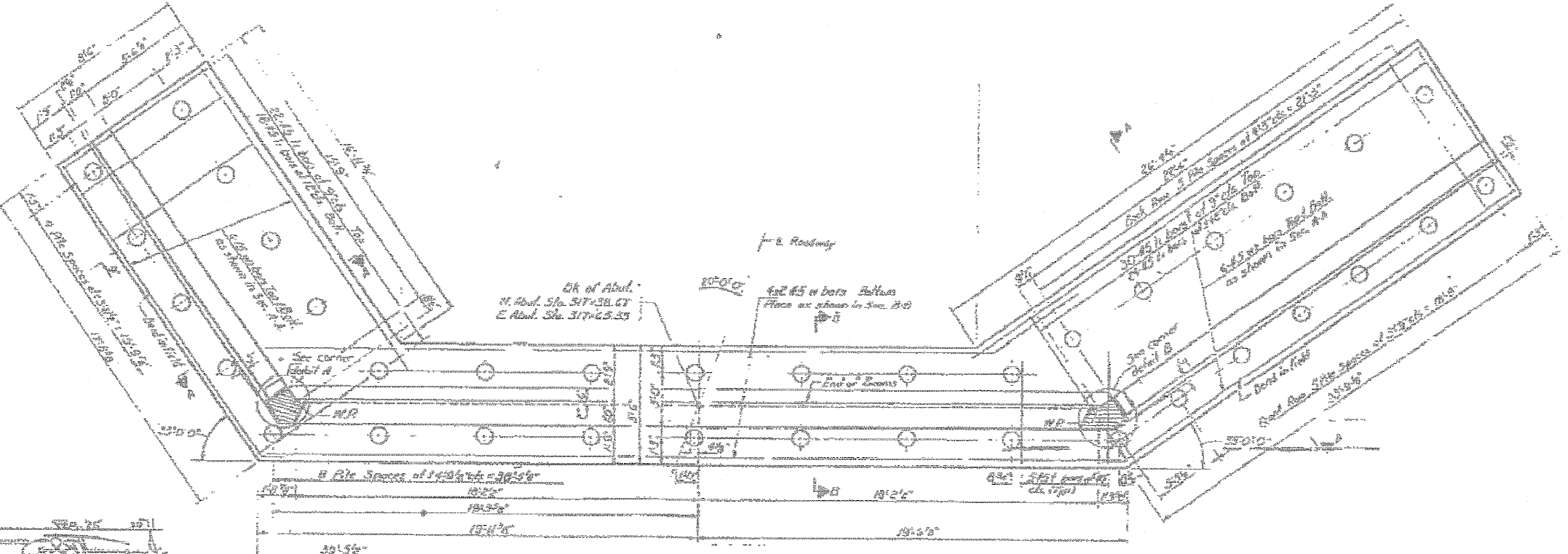
STATE OF ILLINOIS
DEPARTMENT OF PUBLIC WORKS & BUILDINGS
DIVISION OF HIGHWAYS

Note:
Bars indicated thus 20x3-#5 etc
indicates 20 lines of bars with 3
lengths per line.
dia. bar lags = 84 dia.



ELEVATION

PILE DATA
Type: Untreated
Capacity: 20 Tons
Req'd Length: 67'0" H. Abut
82'0" E. Abut
Req'd No.: 36 E. Abut
Note: Also include shown on all piers.



PLAN

DESIGNED: J.M. Dyer
CHECKED: J.M. Dyer
DRAWN: J.E. Lindsey
CHECKED: J.E. Lindsey

ABUTMENTS
301 RT. 116 SEC 116 BR-3
IROQUOIS COUNTY
STA 317+52

FOR INFORMATIONAL
USE ONLY

FILE NAME = c:\projects\ep03504\consult\20-24.00702	USER NAME = carpenterd	DESIGNED - JML	REVISED -	STATE OF ILLINOIS DEPARTMENT OF TRANSPORTATION	EXISTING PLANS	F.A.P. RTE. 681	SECTION 116 BR-1	COUNTY IROQUOIS	TOTAL SHEETS 28	SHEET NO. 23	
3.00.010-b14_existingplans.dgn	DRAWN - DJM	CHECKED - MSW	REVISED -			SCALE:	SHEET NO. B13 OF 14 SHEETS	STA.	TO STA.	CONTRACT NO. 66730	
PLOT SCALE = 1:2000 / 1 IN.	DATE - 04/09/08					FED. ROAD DIST. NO. 3 ILLINOIS FED. AID PROJECT					
PLOT DATE = Aug 07, 2008 - 09:05:20 AM						FARNSWORTH GROUP, INC. CONSULTING ENGINEERS - 2709 MCGRAW DRIVE BLOOMINGTON, ILLINOIS 61704 (309) 663-8435 / (309) 663-1571 FAX					