

F.A. RTE.	SECTION	COUNTY	TOTAL SHEETS	SHEET NO.
*	*	**	219	71
STA. _____		TO STA. _____		
FED. ROAD DIST. NO. _____		ILLINOIS FED. AID PROJECT		

\*(06-14 & 50-8)RS-1 (14B,B-1,VB,VB-1,VB-2,VB-3)BR

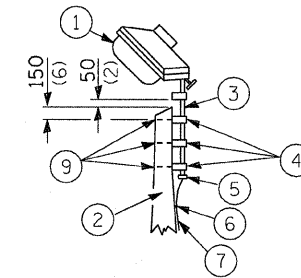
\*\* BUREAU & LASALLE

NOTE:

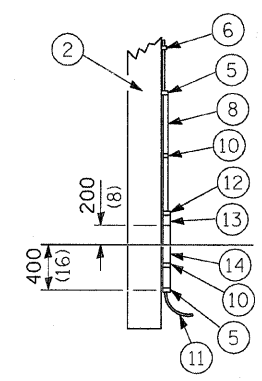
Luminaire(s) shall have a 2-pole inline weatherproof quick disconnect fuse holder.

Luminaire(s) shall be oriented and the mounting angle adjusted as recommended by the Engineer.

Connect luminaire equipment ground to ACSR messenger.



- ① Luminaire, 250W
- ② Wood pole, class 3 or better
- ③ 63 (2 1/2) Galv. steel conduit
- ④ Single offset pole band
- ⑤ Conduit bushing
- ⑥ Cable clamps on 600 (24) centers
- ⑦ 2/c #12 Type USE cable
- ⑧ 25 (1) Galv. steel conduit 3.0 m (10') in length
- ⑨ 16 (5/8) Ø hot dipped galvanized bolt with flat washer & locknut (3 req'd)
- ⑩ Conduit clamps on 900 (36) centers
- ⑪ Unit duct
- ⑫ Threaded reducer
- ⑬ "C" Condulet, threaded
- ⑭ 40 (1 1/2) Galv. steel conduit for 1 unit duct or 75 (3) galv. steel conduit for 2 or 3 unit ducts.



POLE, WOOD

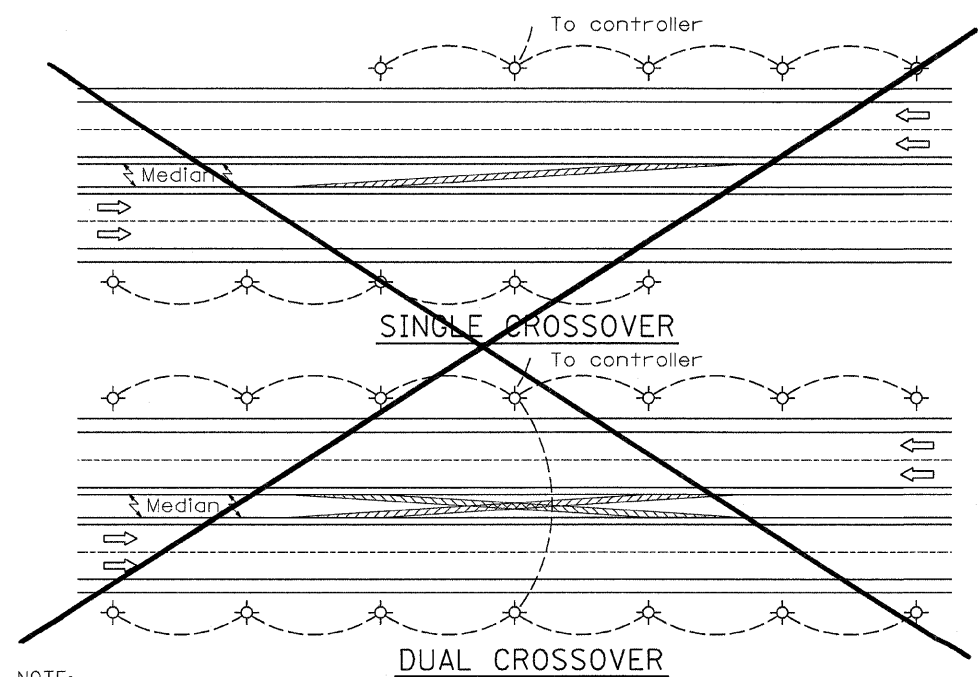
POLE LENGTH	DEPTH IN GROUND
19.8 m (65')	3.6 m (12')
18.0 m (60')	3.0 m (10')
16.8 m (55')	2.7 m (9')
16.0 m (50')	2.4 m (8')
13.7 m (45')	2.1 m (7')
12.0 m (40')	2.0 m (6.5')
10.7 m (35')	1.8 m (6')
9.0 m (30')	1.7 m (5.5')

All dimensions are in millimeters (inches) unless otherwise shown.

TEMPORARY ROADWAY LIGHTING

REVISIONS	
NAME	DATE

ILLINOIS DEPARTMENT OF TRANSPORTATION  
TEMPORARY ROADWAY LIGHTING



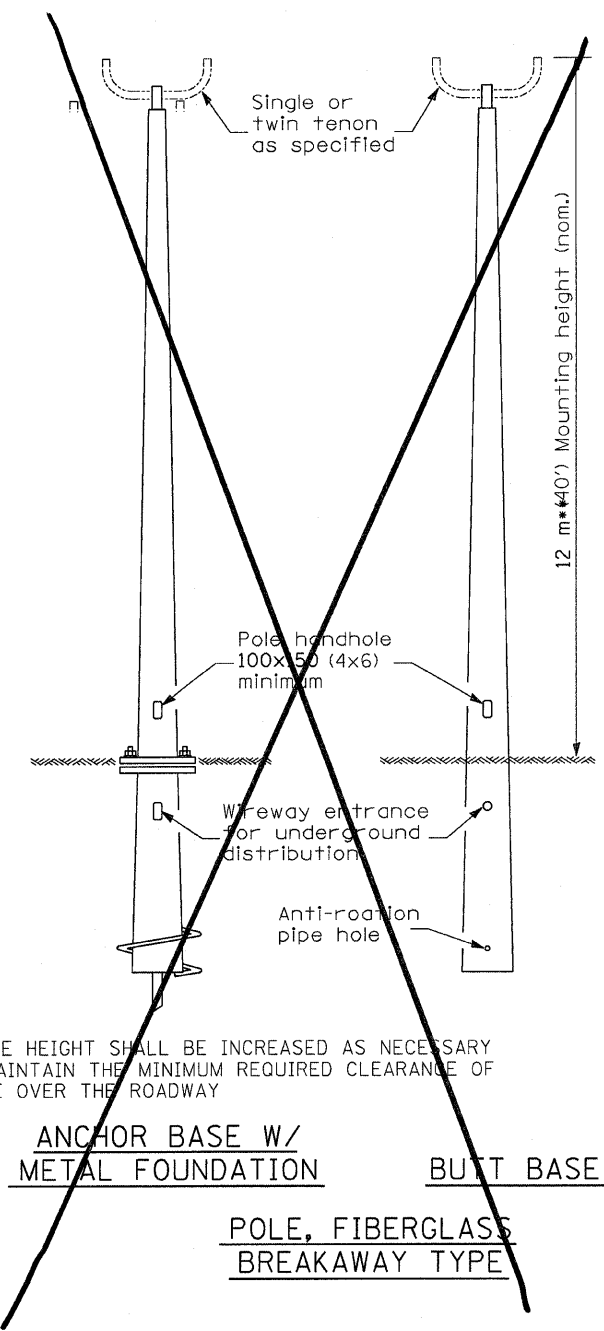
NOTE:

Min. Pole spacing 60 m (200')  
Max. Pole spacing 75 m (250')

Setback shall be min. 9 m (30') or 1.5 m (5') back of ditch, unless breakaway type pole is used.

SEE SHEET 72 FOR TEMPORARY LIGHTING PLAN.

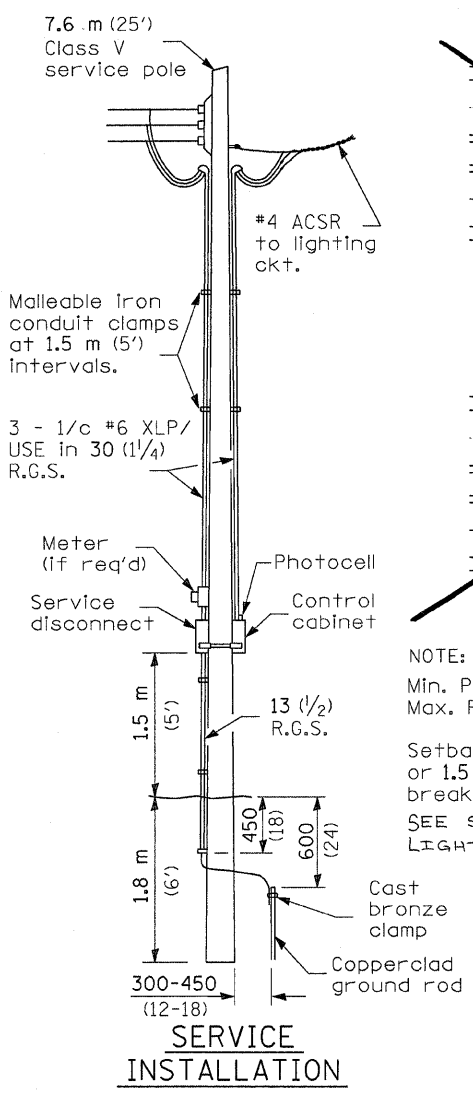
- ① Luminaire, 250W
- ② Wood pole, class 3 or better
- ③ 63 (2 1/2) Galv. steel conduit
- ④ Single offset pole band
- ⑤ Conduit bushing
- ⑥ Cable clamps on 600 (24) centers
- ⑦ 2/c #12 Type USE cable
- ⑧ 25 (1) Galv. steel conduit 3.0 m (10') in length



\*\*POLE HEIGHT SHALL BE INCREASED AS NECESSARY TO MAINTAIN THE MINIMUM REQUIRED CLEARANCE OF CABLE OVER THE ROADWAY

ANCHOR BASE W/  
METAL FOUNDATION      BUTT BASE

POLE, FIBERGLASS  
BREAKAWAY TYPE

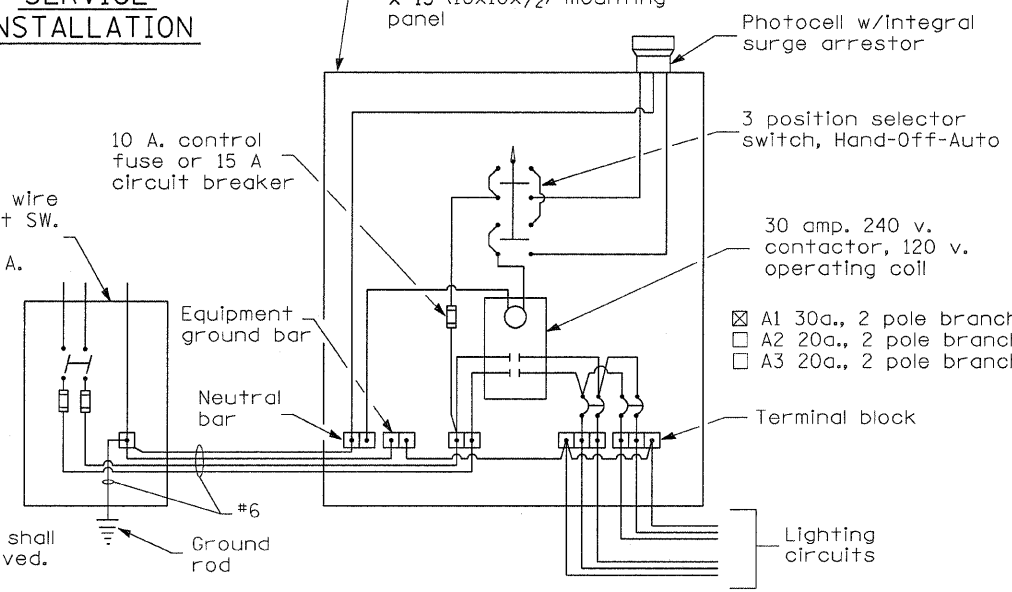


SERVICE INSTALLATION

\* 2- Pole, 3 wire disconnect SW. NEMA 3R fused 30 A.

NOTE:  
All equipment shall be U.L. approved.

\* 30 A. or 60 A., dependent upon utility co. rules.



WIRING DIAGRAM

PLOT DATE = Aug 27 2008 08:31:51 PM  
 FILE NAME = e:\p\work\roadway\temp\lgt014.m32\lgt014.dgn  
 PLOT SCALE = 1000.0000 1/1 IN.  
 USER NAME = wenzelko