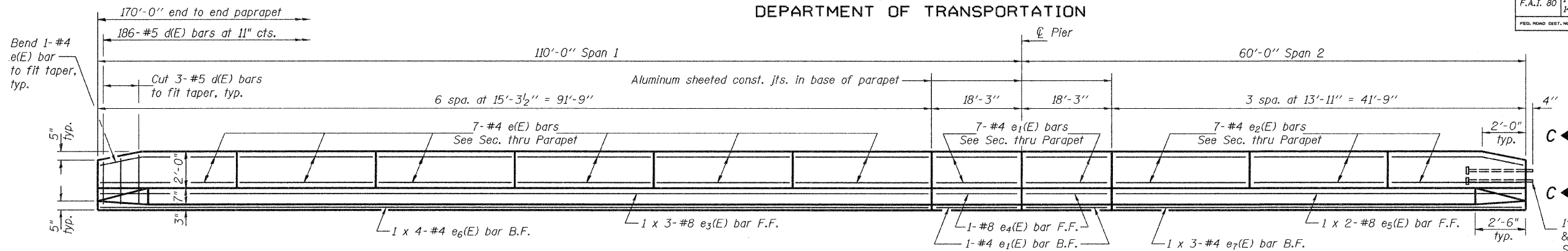


STATE OF ILLINOIS
DEPARTMENT OF TRANSPORTATION

ROUTE NO.	SECTION	COUNTY	TOTAL SHEETS	SHEET NO.	SHEET NO. 15 32 SHEETS
F.A.I. 80	14BR & 14BR-1	BUREAU	219	87	
FED. ROAD DIST. NO. 7		ILLINOIS	FED. AID PROJECT		

Contract No. 66731



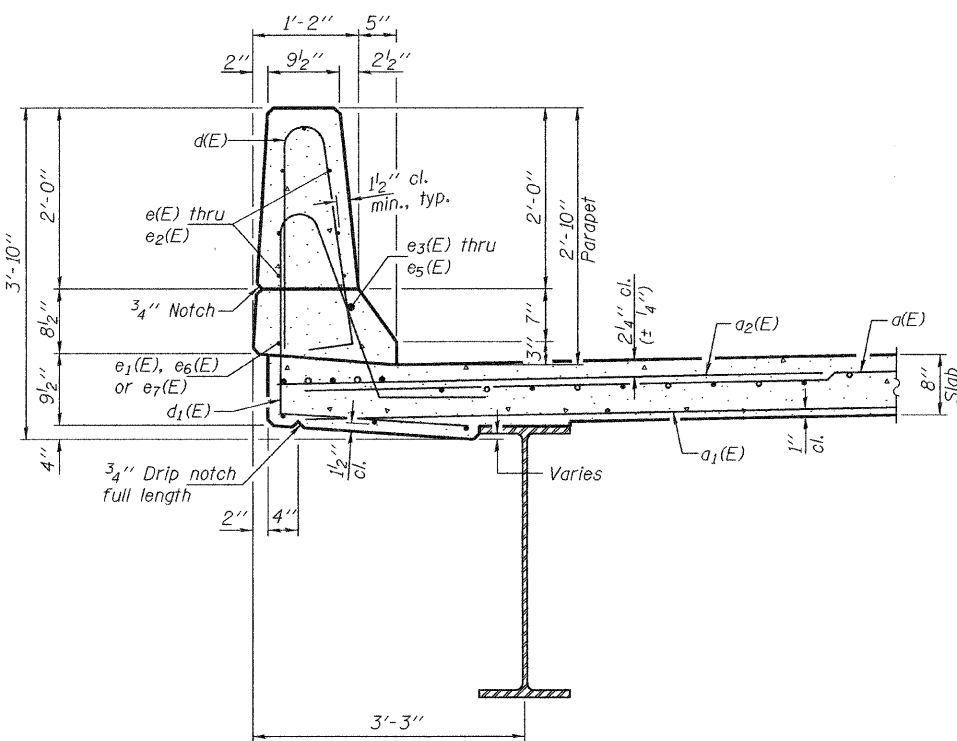
MIN. BAR LAPS

(Parapet)
#4 bar = 1'-4"
#8 bar = 3'-5"

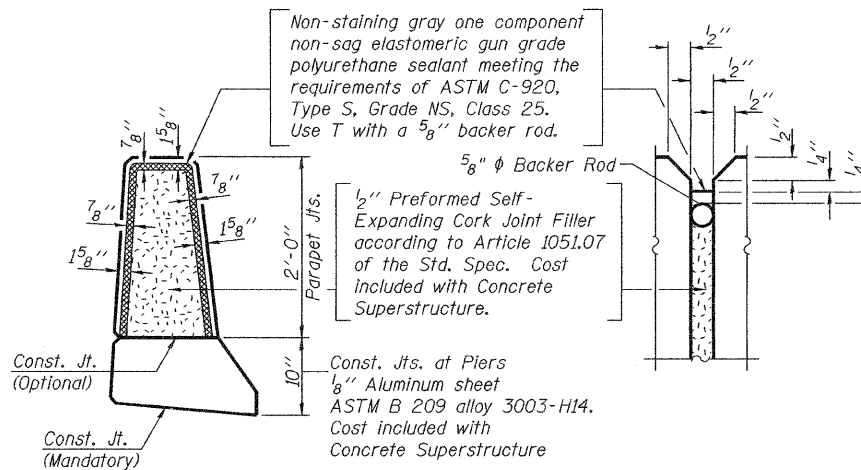
1" ϕ Anchor bolts at W. Abut. (W.B.) & E. Abut. (E.B.) only. See Highway Standard 631026. Cost included with Concrete Superstructure.

INSIDE ELEVATION OF NORTH PARAPET (E.B.)

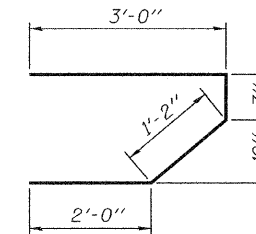
(Looking North - South parapet similar)



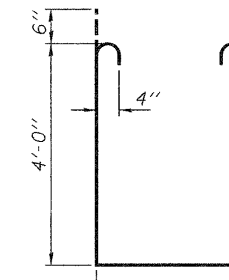
SECTION THRU PARAPET



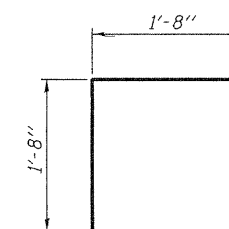
PARAPET JOINT DETAILS



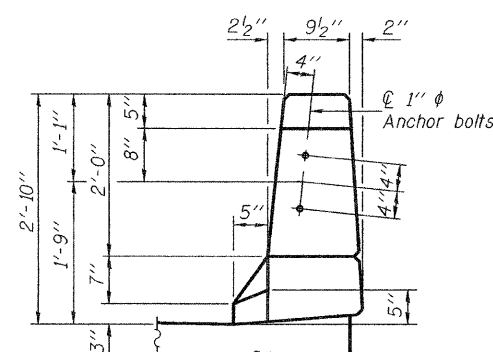
BAR s(E)



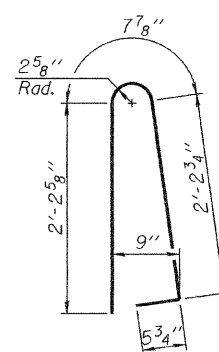
BAR s1(E)



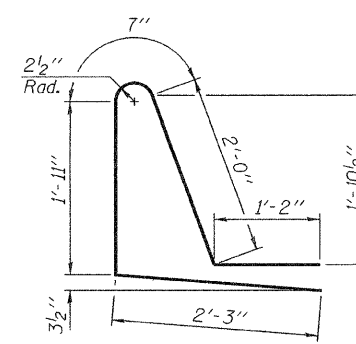
BAR v(E)



VIEW C-C



BAR d(E)



BAR d1(E)

TWO SUPERSTRUCTURES

(E.B. & W.B.)

BILL OF MATERIAL

Bar	No.	Size	Length	Shape
d(E)	742	#5	42'-6"	—
a1(E)	454	#5	40'-10"	—
a2(E)	1484	#6	6'-0"	—
b(E)	644	#5	26'-2"	—
b1(E)	258	#6	19'-5"	—
b2(E)	492	#5	30'-1"	—
d(E)	744	#5	5'-7"	┘
d1(E)	744	#5	7'-11"	┘
e(E)	168	#4	15'-0"	—
e1(E)	64	#4	18'-0"	—
e2(E)	84	#4	13'-8"	—
e3(E)	12	#8	32'-10"	—
e4(E)	8	#8	18'-0"	—
e5(E)	8	#8	22'-6"	—
e6(E)	16	#4	23'-11"	—
e7(E)	16	#4	14'-9"	—
m(E)	16	#6	22'-0"	—
m1(E)	24	#6	22'-9"	—
m2(E)	48	#6	9'-11"	—
m3(E)	20	#6	7'-0"	—
m4(E)	8	#6	3'-0"	—
s(E)	184	#5	6'-9"	┘
s1(E)	164	#4	11'-2"	┘
v(E)	168	#5	3'-4"	┘
Reinforcement Bars, Epoxy Coated			Pound	127580
Concrete Superstructure			Cu. Yds.	524.0

Bars indicated thus 20 x 3-#5 etc. indicates 20 lines of bars with 3 lengths per line.

SUPERSTRUCTURE DETAILS

F.A.I. RTE. 80 - SEC. 14BR & 14BR-1

BUREAU COUNTY

STATION 400+22.07

STRUCTURE NO. 006-0165 (E.B.)

STRUCTURE NO. 006-0166 (W.B.)

DESIGNED	Nicholas R. Barnett
CHECKED	Ray Ahanchi
DRAWN	h.t. duong
CHECKED	NRB/GRA

EXAMINED	Thomas J. Romagallo	SEP. 30, 2008
PASSED	Ralph E. Anderson	