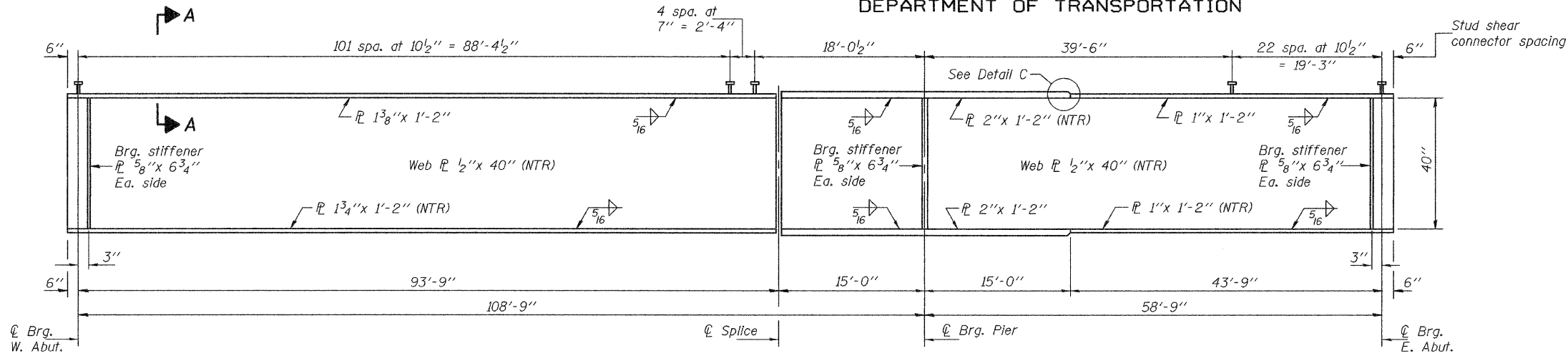


STATE OF ILLINOIS
DEPARTMENT OF TRANSPORTATION

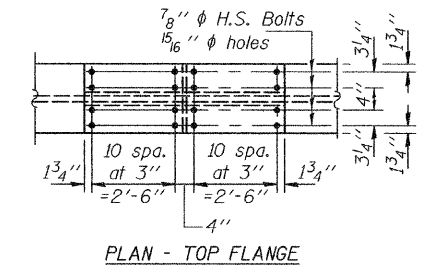
ROUTE NO.	SECTION	COUNTY	TOTAL SHEETS	SHEET NO.	SHEET NO. 18 32 SHEETS
F.A.I. 80	14BR & 14BR-1	BUREAU	219	90	
FED. ROAD DIST. NO. 7	ILLINOIS	FED. AID PROJECT			

Contract No. 66731

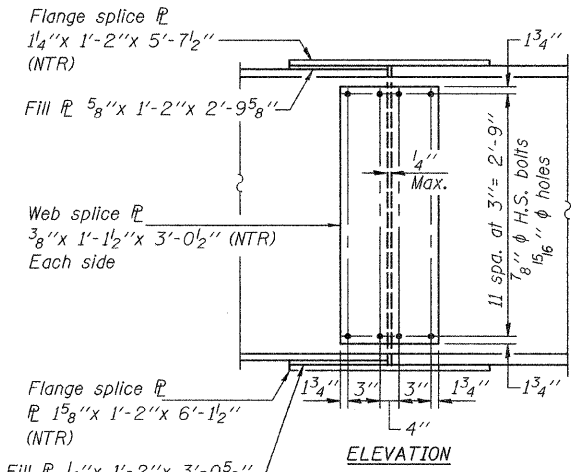


GIRDER ELEVATION

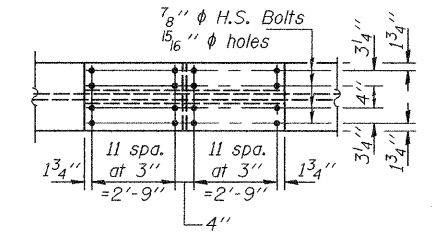
All structural steel shall be AASHTO M270 Grade 50W.



PLAN - TOP FLANGE

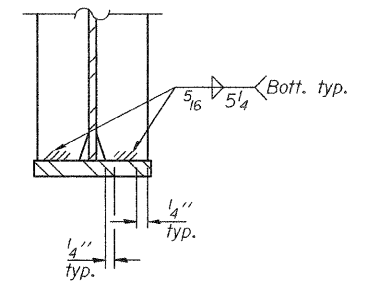


ELEVATION

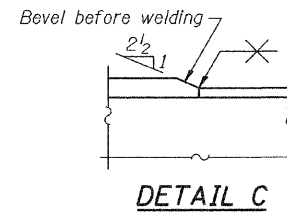


PLAN - BOTTOM FLANGE

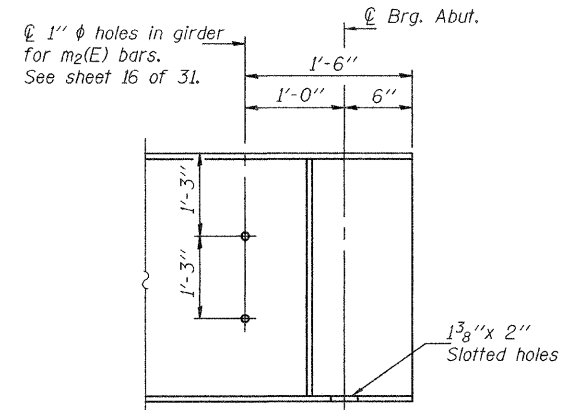
SPLICE DETAIL



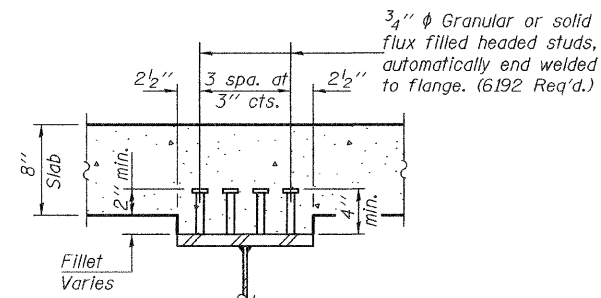
DETAIL A



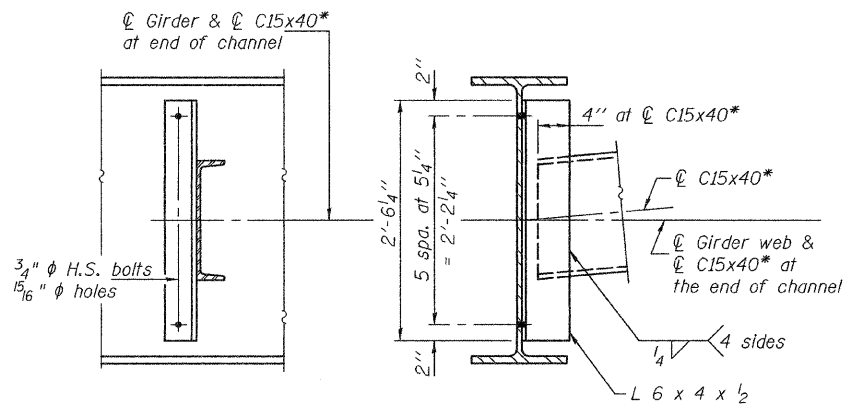
DETAIL C



END OF GIRDER ELEVATION

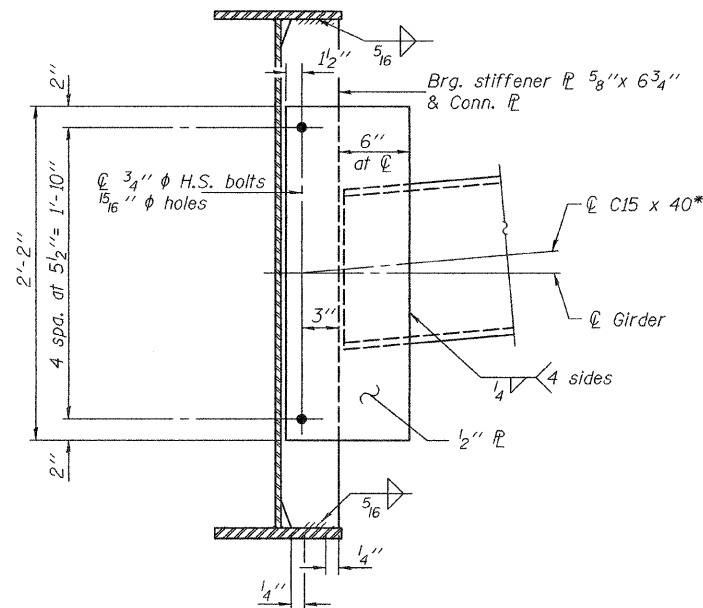


SECTION A-A



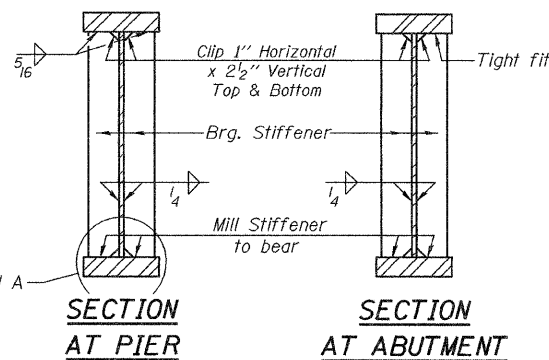
DIAPHRAGM D

(90 Required)



DIAPHRAGM D1

(10 Required)



SECTION AT PIER

SECTION AT ABUTMENT

Notes: Load carrying components designated "NTR" shall conform to the Supplemental Requirements for Notch Toughness, Zone 2. Two hardened washers shall be required for all oversized holes in diaphragms. Omit connecting plates on exterior side of exterior girder. *Alternate channel C15x50 is permitted to facilitate material acquisition. Calculated weight of structural steel is based on lighter section. The alternate, if utilized, shall be provided at no cost to the department.

DESIGNED	Nicholas R. Barnett
CHECKED	Ray Ahanchi
DRAWN	h.t. duong
CHECKED	NRB/GRA

EXAMINED	Thomas J. Donagallo	Sep. 30, 2008
PASSED	Ralph E. Anderson	

STRUCTURAL STEEL DETAILS
F.A.I. RTE. 80 - SEC. 14BR & 14BR-1
BUREAU COUNTY
STATION 400+22.07
STRUCTURE NO. 006-0165 (E.B.)
STRUCTURE NO. 006-0166 (W.B.)