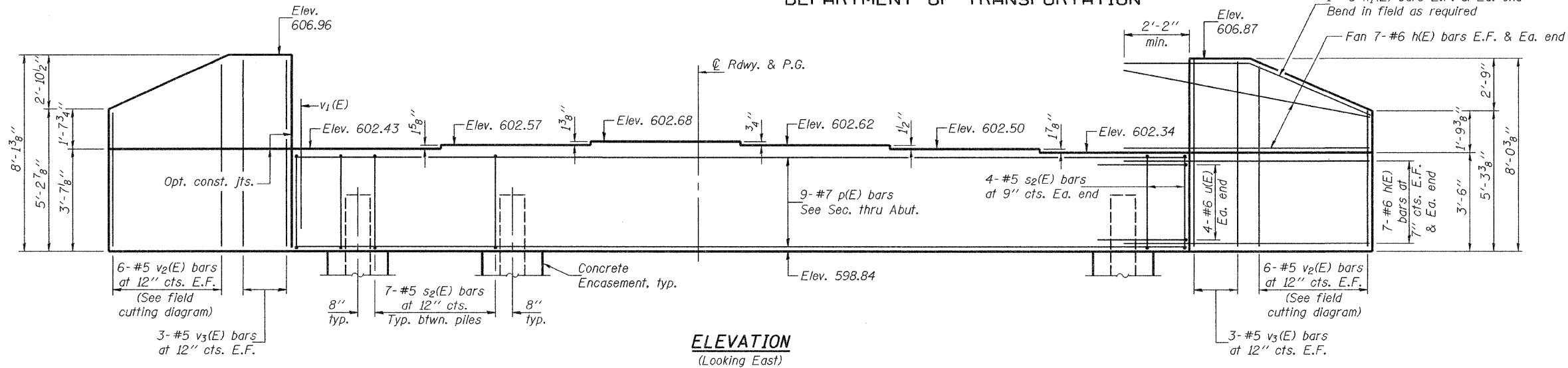


STATE OF ILLINOIS
DEPARTMENT OF TRANSPORTATION

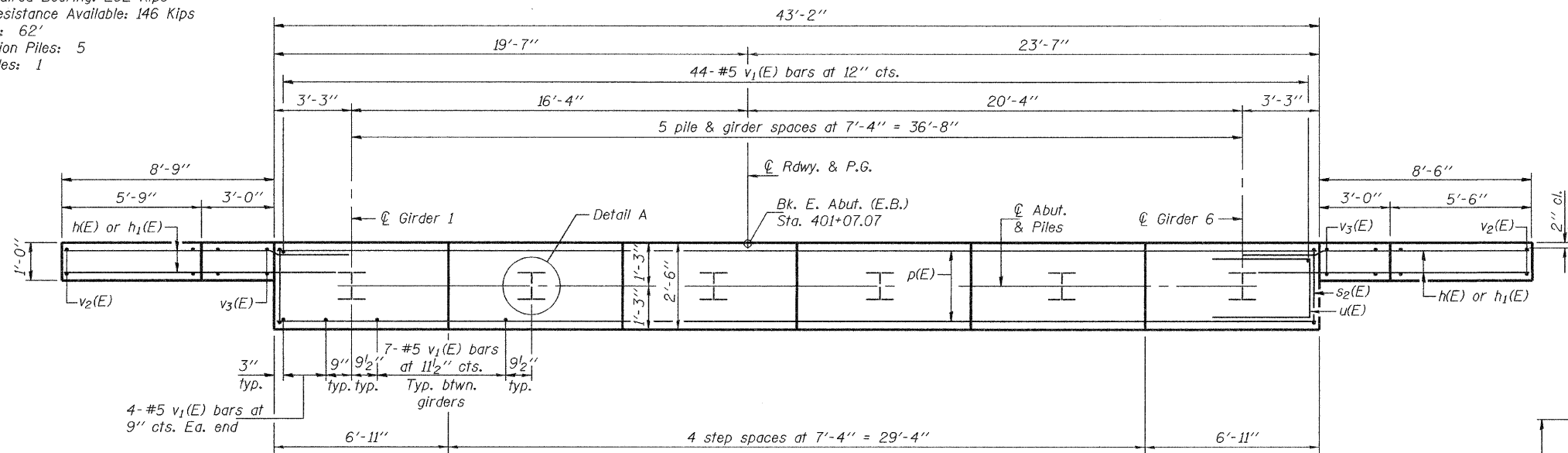
ROUTE NO.	SECTION	COUNTY	TOTAL SHEETS	SHEET NO.	SHEET NO. 21 32 SHEETS
F.A.I. 80	14BR & 14BR-1	BUREAU	219	93	
ILLINOIS		CONTRACT NO. 66731			



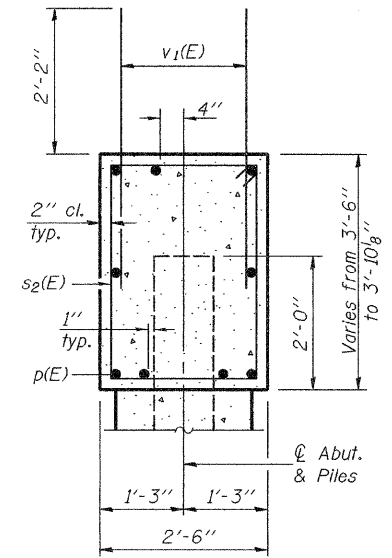
ELEVATION
(Looking East)

PILE DATA

Type: Steel HP10x57
Nominal Required Bearing: 292 Kips
Factored Resistance Available: 146 Kips
Est. Length: 62'
No. Production Piles: 5
No. Test Piles: 1



PLAN



SEC. THRU ABUT.

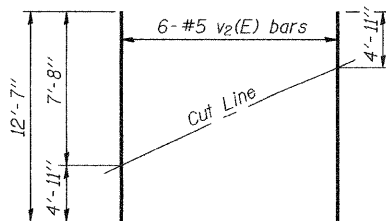
BILL OF MATERIAL

Bar	No.	Size	Length	Shape
h(E)	56	#6	11'-0"	—
h1(E)	4	#5	12'-3"	—
p(E)	9	#7	42'-10"	—
s2(E)	43	#5	11'-7"	□
u(E)	8	#6	8'-1"	□
v1(E)	87	#5	4'-4"	—
v2(E)	12	#5	12'-7"	—
v3(E)	12	#5	7'-9"	—
Structure Excavation		Cu. Yd.	88	
Concrete Structures		Cu. Yd.	19.3	
Reinforcement Bars, Epoxy Coated		Pound	3030	
Furnishing Steel Piles HP10x57		Foot	310	
Driving Piles		Foot	310	
Test Pile Steel HP10x57		Each	1	
Concrete Encasement		Cu. Yd.	2.1	
Anchor Bolts, 1" φ		Each	12	

Notes: Pour steps monolithically with cap.
For details of piles and concrete encasement, see sheet 27 of 32.
If h(E) bars interfere with steel H-piles, cut h(E) bars to fit and maintain min. 2'-2" embedment.

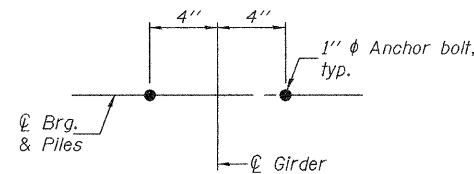
DESIGNED	Nicholas R. Barnett
CHECKED	Ray Ahanchi
DRAWN	h.f. duong
CHECKED	NRB/GRA

EXAMINED	Thomas J. Domagala	Sep. 30, 2008
PASSED	Ronald E. Anderson	

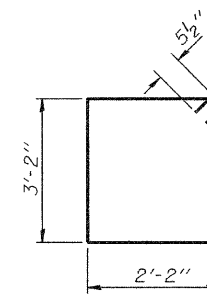


FIELD CUTTING DIAGRAM

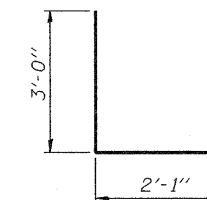
Order v2(E) full length. Cut as shown and use remainder of bars in opposite face.



DETAIL A



BAR s2(E)



BAR u(E)

EAST ABUTMENT (E.B.)
F.A.I. RTE. 80 - SEC. 14BR & 14BR-1
BUREAU COUNTY
STATION 400+22.07
STRUCTURE NO. 006-0165 (E.B.)
STRUCTURE NO. 006-0166 (W.B.)