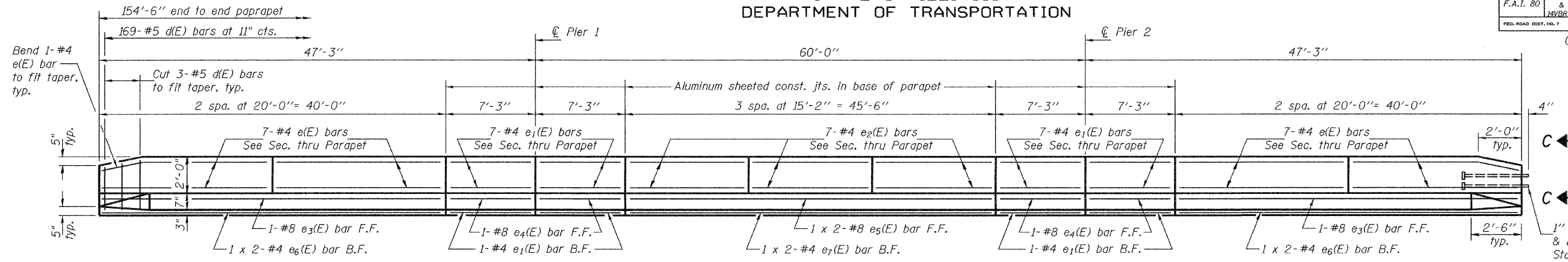


STATE OF ILLINOIS
DEPARTMENT OF TRANSPORTATION

ROUTE NO.	SECTION	COUNTY	TOTAL SHEETS	SHEET NO.	SHEET NO. 15 35 SHEETS
F.A.I. 80	14VBR-2 & 14VBR-3	BUREAU	219	119	
FED. ROAD DIST. NO. 7		ILLINOIS	FED. AID PROJECT-		

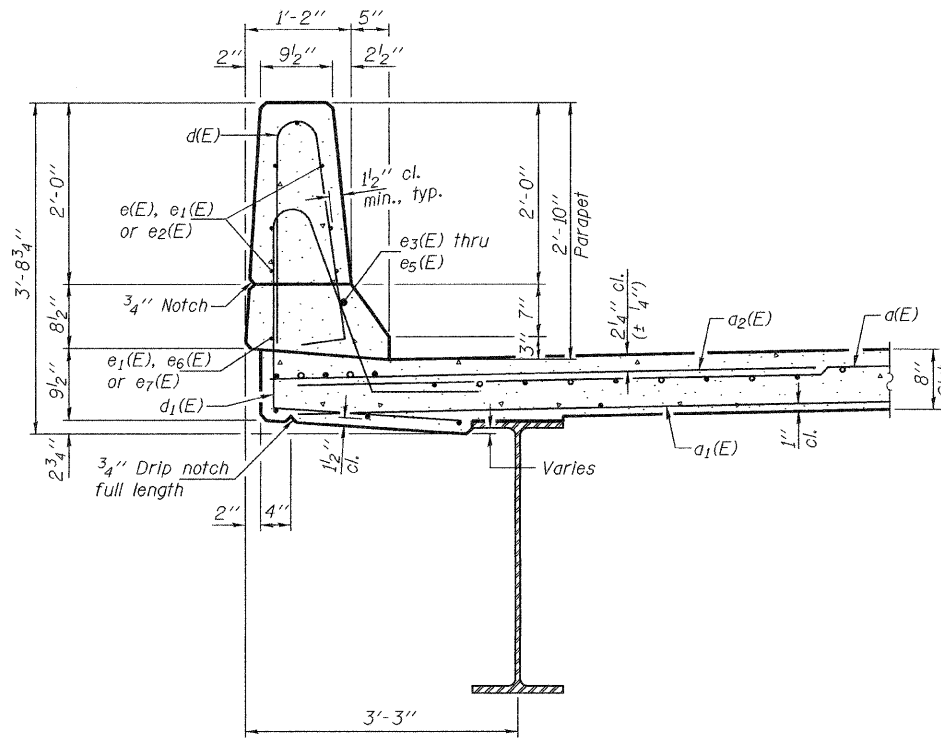
Contract No. 66731



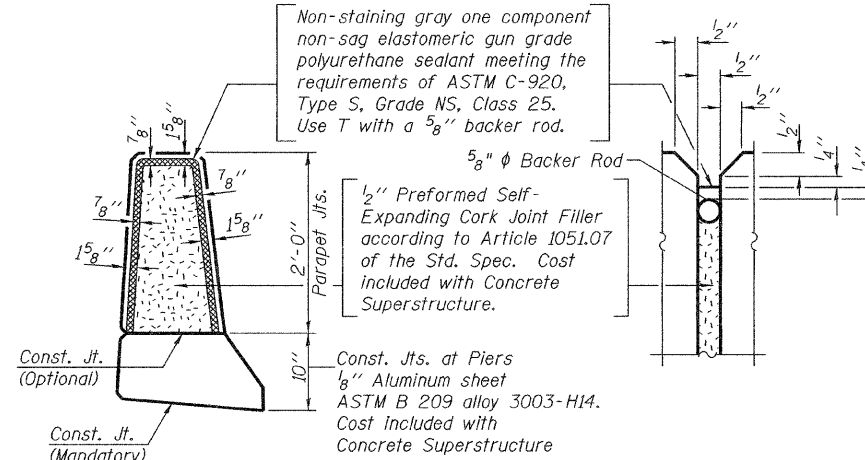
INSIDE ELEVATION OF NORTH PARAPET (E.B.) & (W.B.)
(Looking North - South parapets similar)

MIN. BAR LAPS

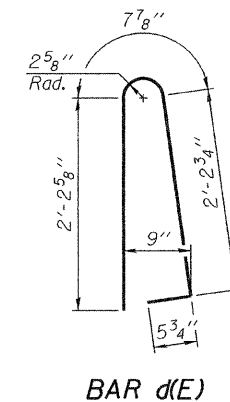
(Parapet)
#4 bar = 1'-4"
#8 bar = 3'-5"



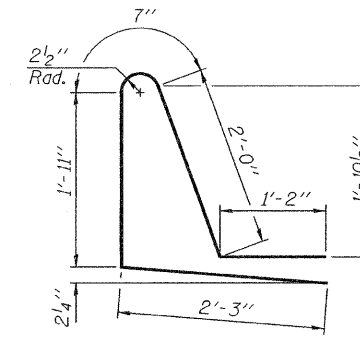
SECTION THRU PARAPET



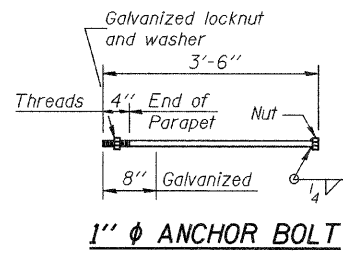
PARAPET JOINT DETAILS



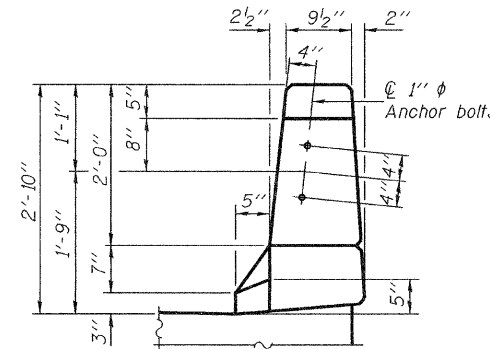
BAR d(E)



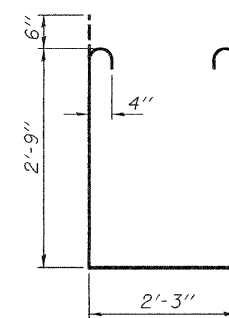
BAR d1(E)



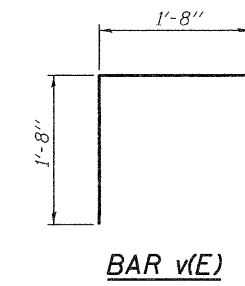
1" φ ANCHOR BOLT



VIEW C-C



BAR s1(E)



BAR v(E)

**TWO SUPERSTRUCTURES
(E.B. & W.B.)
BILL OF MATERIAL**

Bar	No.	Size	Length	Shape
d(E)	676	#5	42'-6"	—
a1(E)	416	#5	40'-10"	—
a2(E)	1352	#6	6'-0"	—
a3(E)	8	#5	43'-6"	—
b(E)	460	#5	32'-7"	—
b1(E)	172	#6	31'-6"	—
b2(E)	492	#5	27'-6"	—
d(E)	676	#5	5'-7"	⌒
d1(E)	676	#5	7'-11"	⌒
e(E)	112	#4	19'-9"	—
e1(E)	128	#4	7'-0"	—
e2(E)	84	#4	14'-11"	—
e3(E)	8	#8	39'-9"	—
e4(E)	16	#8	7'-0"	—
e5(E)	8	#8	24'-5"	—
e6(E)	16	#4	20'-7"	—
e7(E)	8	#4	23'-5"	—
m(E)	16	#6	23'-3"	—
m1(E)	24	#6	24'-3"	—
m2(E)	48	#6	10'-5"	—
m3(E)	20	#6	7'-6"	—
m4(E)	8	#6	3'-1"	—
s(E)	184	#5	5'-9"	⌒
s1(E)	164	#4	8'-9"	⌒
v(E)	168	#5	3'-4"	⌒
Reinforcement Bars, Epoxy Coated	Pound	117650		
Concrete Superstructure	Cu. Yds.	465.2		

SUPERSTRUCTURE DETAILS
F.A.I. RTE. 80 - SEC. 14VBR-2 & 14VBR-3
BUREAU COUNTY
STATION 413+39.84
STRUCTURE NO. 006-0167 (E.B.)
STRUCTURE NO. 006-0168 (W.B.)

DESIGNED	Nicholas R. Barnett
CHECKED	Ray Ahanchi
DRAWN	h.f. duong
CHECKED	NRB/GRA

EXAMINED *Thomas J. Domingalbi*
PASSED *Ronald E. Anderson*
ENGINEER OF BRIDGES AND STRUCTURES

Sep. 30, 2008