

Notes: Space reinforcement in cap to miss anchor bolts.
 Pour steps monolithically with cap.
 For details of piles, see sheet 29 of 35.

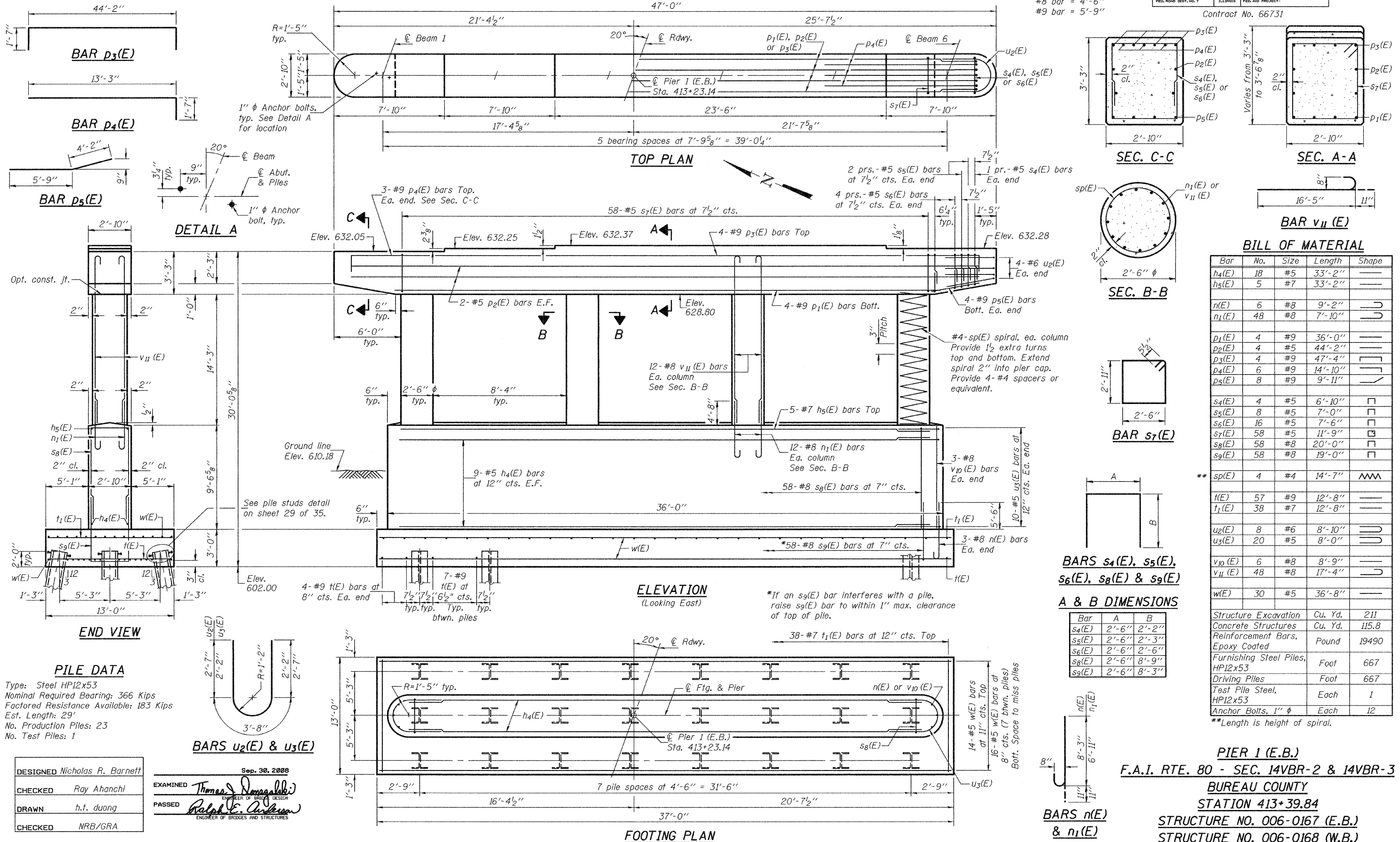
STATE OF ILLINOIS
 DEPARTMENT OF TRANSPORTATION

MIN. BAR LAPS

- #5 bar = 2'-2"
- #8 bar = 4'-6"
- #9 bar = 5'-9"

ROUTE NO.	SECTION	COUNTY	TOTAL SHEETS	SHEET NO.	SHEET NO. 24
F.A.I. 80	14VBR-2 & 14VBR-3	BUREAU	219	128	35 SHEETS
FED. ROAD DIST. NO. 7	ILLINOIS	FED. AID PROJECT-			

Contract No. 66731



BILL OF MATERIAL

Bar	No.	Size	Length	Shape
h4(E)	18	#5	33'-2"	
h5(E)	5	#7	33'-2"	
n(E)	6	#8	9'-2"	
n1(E)	48	#8	7'-10"	
p1(E)	4	#9	36'-0"	
p2(E)	4	#5	44'-2"	
p3(E)	4	#9	47'-4"	
p4(E)	6	#9	14'-10"	
p5(E)	8	#9	9'-11"	
s4(E)	4	#5	6'-10"	
s5(E)	8	#5	7'-0"	
s6(E)	16	#5	7'-6"	
s7(E)	58	#5	11'-9"	
s8(E)	58	#8	20'-0"	
s9(E)	58	#8	19'-0"	
sp(E)	4	#4	14'-7"	
t(E)	57	#9	12'-8"	
t1(E)	38	#7	12'-8"	
u2(E)	8	#6	8'-10"	
u3(E)	20	#5	8'-0"	
v10(E)	6	#8	8'-9"	
v11(E)	48	#8	17'-4"	
w(E)	30	#5	36'-8"	
Structure Excavation			Cu. Yd.	211
Concrete Structures			Cu. Yd.	115.8
Reinforcement Bars, Epoxy Coated			Pound	19490
Furnishing Steel Piles, HP12x53			Foot	667
Driving Piles			Foot	667
Test Pile Steel, HP12x53			Each	1
Anchor Bolts, 1" φ			Each	12

PIER 1 (E.B.)
 F.A.I. RTE. 80 - SEC. 14VBR-2 & 14VBR-3
 BUREAU COUNTY
 STATION 413+39.84
 STRUCTURE NO. 006-0167 (E.B.)
 STRUCTURE NO. 006-0168 (W.B.)

PILE DATA
 Type: Steel HP12x53
 Nominal Required Bearing: 366 Kips
 Factored Resistance Available: 183 Kips
 Est. Length: 29'
 No. Production Piles: 23
 No. Test Piles: 1

DESIGNED	Nicholas R. Barnett
CHECKED	Ray Ahanchi
DRAWN	h.t. duong
CHECKED	NRB/GRA

Sep. 30, 2008
 EXAMINED *Thomas J. Domagala*
 ENGINEER OF BRIDGE DESIGN
 PASSED *Ralph E. Anderson*
 ENGINEER OF BRIDGES AND STRUCTURES