

Notes: Space reinforcement in cap to miss anchor bolts.
 Pour steps monolithically with cap.
 For details of piles, see sheet 29 of 35.

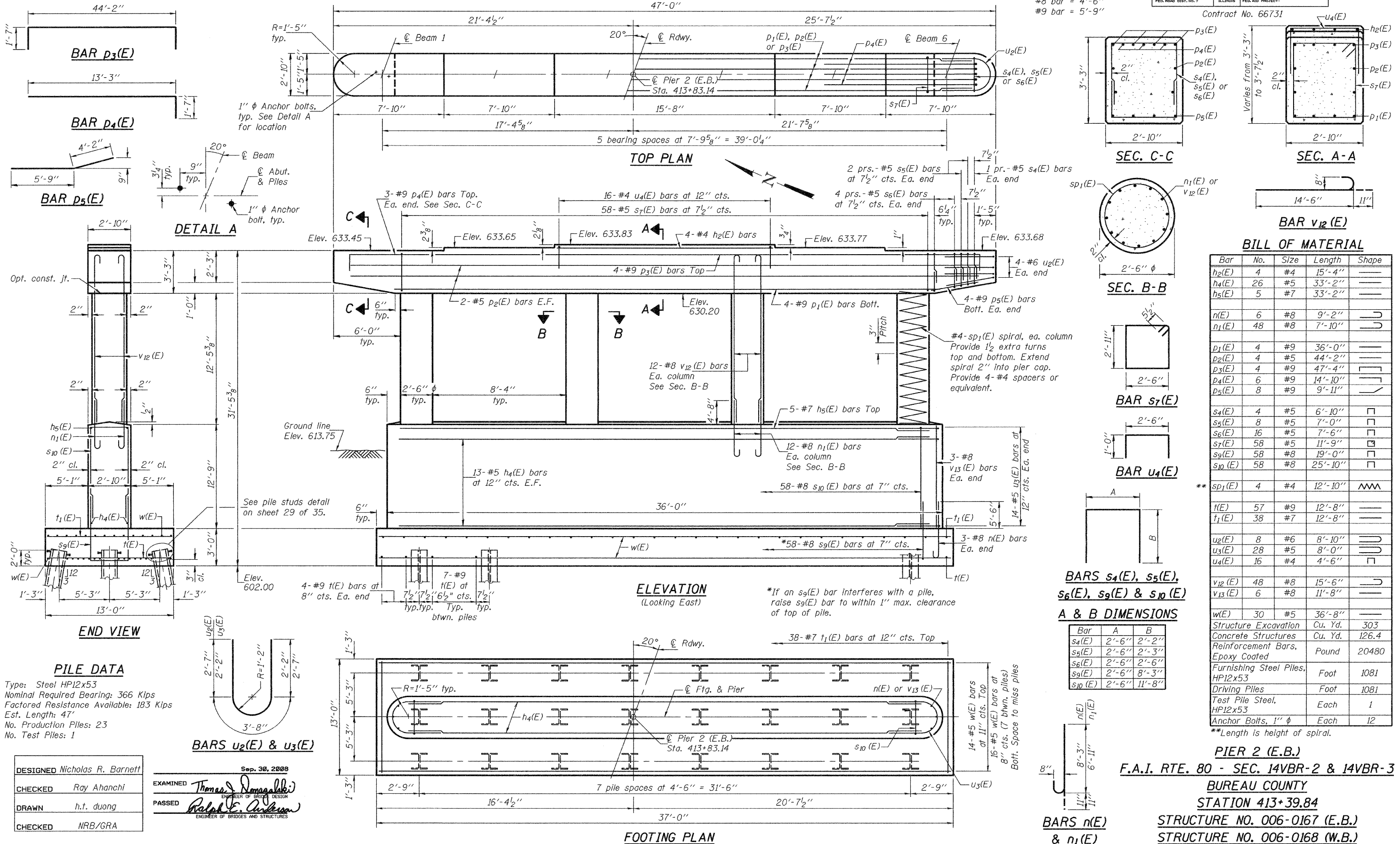
STATE OF ILLINOIS
 DEPARTMENT OF TRANSPORTATION

MIN. BAR LAPS

- #5 bar = 2'-2"
- #8 bar = 4'-6"
- #9 bar = 5'-9"

ROUTE NO.	SECTION	COUNTY	TOTAL SHEETS	SHEET NO.	SHEET NO. 25 35 SHEETS
F.A.I. 80	14VBR-2 & 14VBR-3	BUREAU	2,19	12,9	
FED. ROAD DIST. NO. 7		ILLINOIS	FED. AID PROJECT		

Contract No. 66731



BILL OF MATERIAL

Bar	No.	Size	Length	Shape
h2(E)	4	#4	15'-4"	—
h4(E)	26	#5	33'-2"	—
h5(E)	5	#7	33'-2"	—
n(E)	6	#8	9'-2"	U
n1(E)	48	#8	7'-10"	U
p1(E)	4	#9	36'-0"	—
p2(E)	4	#5	44'-2"	—
p3(E)	4	#9	47'-4"	—
p4(E)	6	#9	14'-10"	—
p5(E)	8	#9	9'-11"	—
s4(E)	4	#5	6'-10"	□
s5(E)	8	#5	7'-0"	□
s6(E)	16	#5	7'-6"	□
s7(E)	58	#5	11'-9"	□
s9(E)	58	#8	19'-0"	□
s10(E)	58	#8	25'-10"	□
sp1(E)	4	#4	12'-10"	W
t(E)	57	#9	12'-8"	—
t1(E)	38	#7	12'-8"	—
u2(E)	8	#6	8'-10"	U
u3(E)	28	#5	8'-0"	U
u4(E)	16	#4	4'-6"	□
v12(E)	48	#8	15'-6"	U
v13(E)	6	#8	11'-8"	—
w(E)	30	#5	36'-8"	—
Structure Excavation		Cu. Yd.	303	
Concrete Structures		Cu. Yd.	126.4	
Reinforcement Bars, Epoxy Coated		Pound	20480	
Furnishing Steel Piles, HP12x53		Foot	1081	
Driving Piles		Foot	1081	
Test Pile Steel, HP12x53		Each	1	
Anchor Bolts, 1" φ		Each	12	

PIER 2 (E.B.)

F.A.I. RTE. 80 - SEC. 14VBR-2 & 14VBR-3

BUREAU COUNTY

STATION 413+39.84

STRUCTURE NO. 006-0167 (E.B.)

STRUCTURE NO. 006-0168 (W.B.)

PILE DATA
 Type: Steel HP12x53
 Nominal Required Bearing: 366 Kips
 Factored Resistance Available: 183 Kips
 Est. Length: 47'
 No. Production Piles: 23
 No. Test Piles: 1

DESIGNED	Nicholas R. Barnett
CHECKED	Ray Ahanchi
DRAWN	h.t. duong
CHECKED	NRB/GRA

Sep. 30, 2008
 EXAMINED *Thomas J. Damagala*
 ENGINEER OF BRIDGE DESIGN
 PASSED *Ralph E. Anderson*
 ENGINEER OF BRIDGES AND STRUCTURES