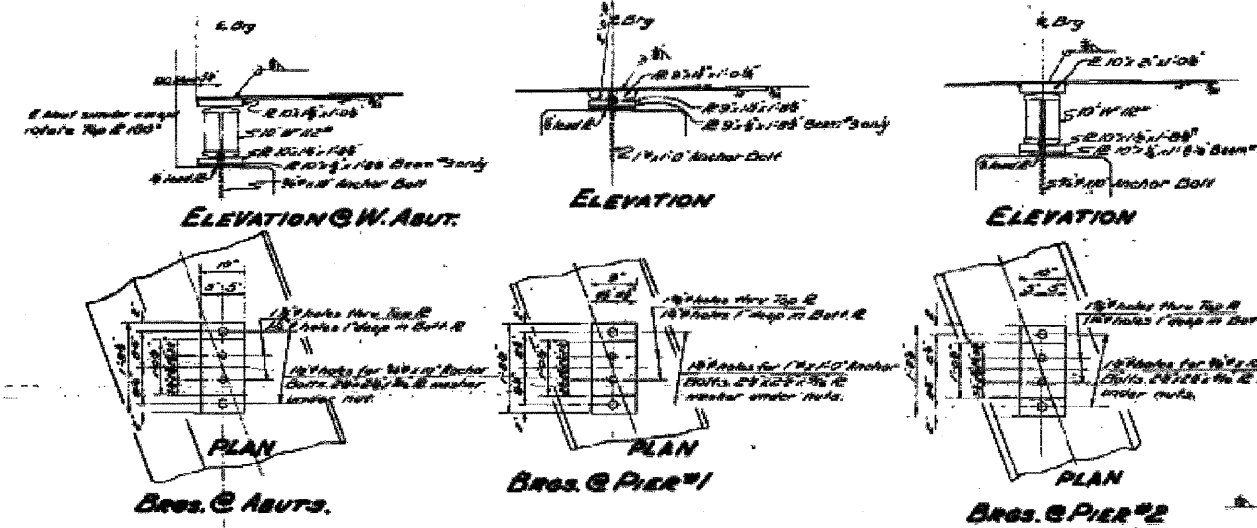
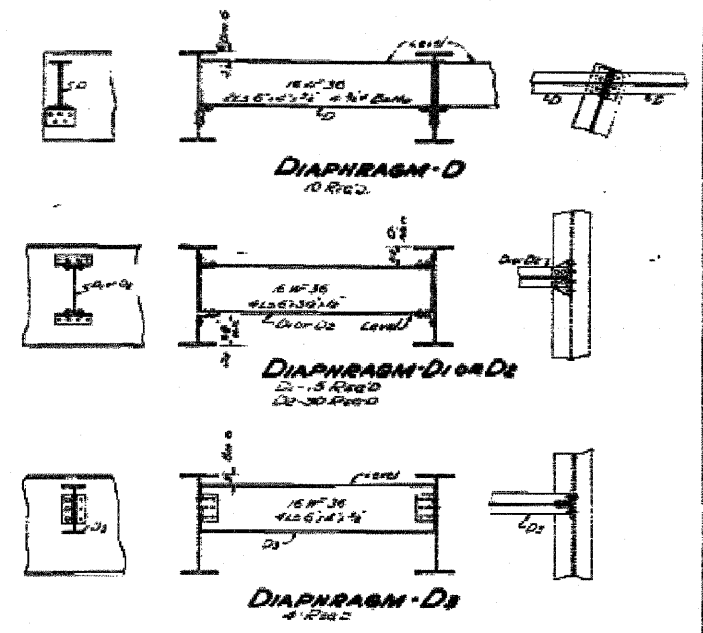
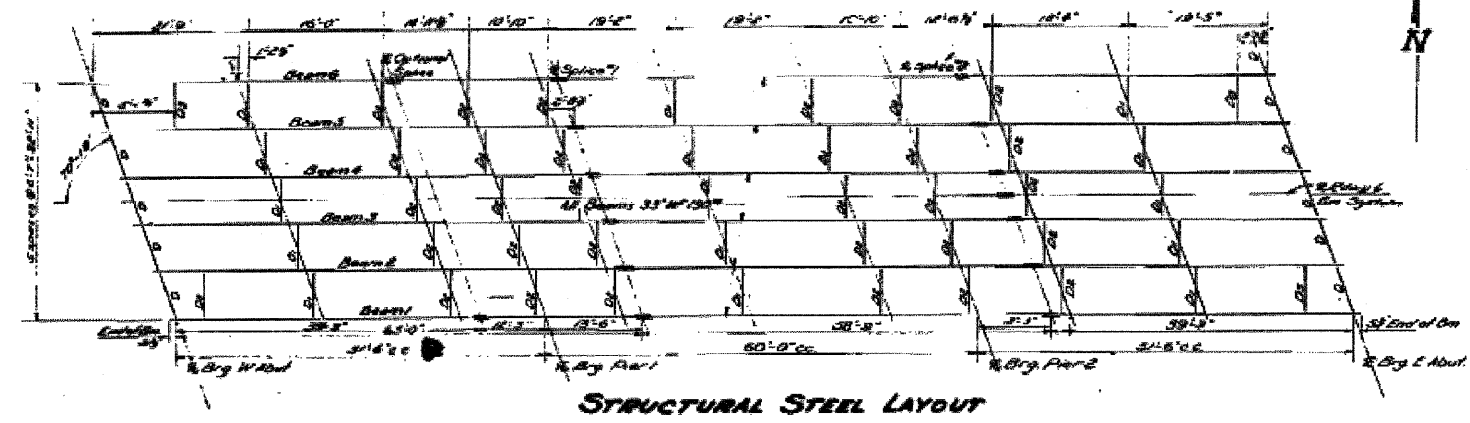


F.A.P. R.T.E.	SECTION	COUNTY	TOTAL SHEETS	SHEET NO.
80	*	BUR & LAS	219	168
STA. _____		TO STA. _____		
FED. ROAD DIST. NO. _____		ILLINOIS FED. AID PROJECT		

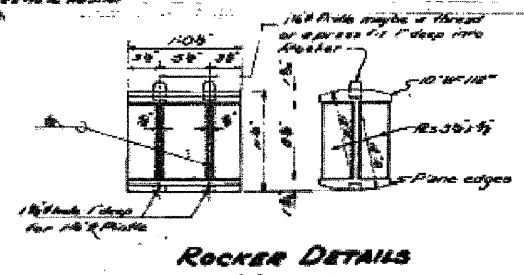
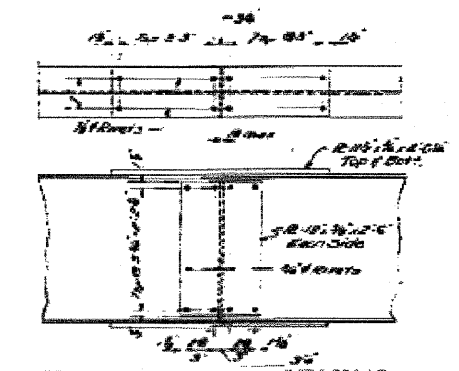
\* (06-14 & 50-8)RS-1 (14B,B-1,VB,VB-1,VB-2,VB-3)BR

STATE OF ILLINOIS  
DEPARTMENT OF PUBLIC WORKS & BUILDINGS  
DIVISION OF HIGHWAYS

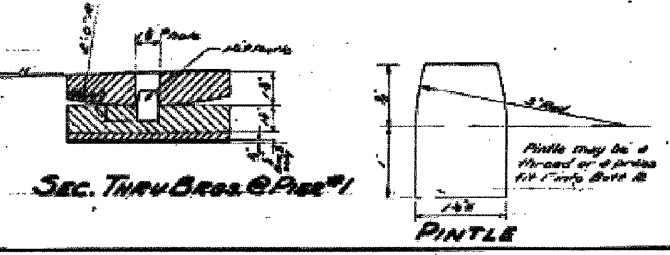
DESIGNED BY	DATE	PROJECT	NO.	SHEET NO.
W. H. H. H.	APR 26 1952	Bureau	# 6	7 SHEETS



E	1	2	3	4	5	6
W. Brg. Abutment	633.70	633.70	633.70	633.70	633.70	633.70
S. Splice #1	634.00	634.74	634.75	634.70	634.00	634.41
S. Splice #2	634.00	634.00	634.11	634.00	634.97	635.76
E. Brg. Abutment	630.04	634.99	637.01	636.94	636.83	636.87



DESIGNED	W. H. H. H.	DATE	APR 26 1952
CHECKED	J. M. H. H.	APPROVED	J. M. H. H.
DRAWN	G. L. H. H.	BY	J. M. H. H.
CHECKED	K. H. H. H.	BY	J. M. H. H.



**STEEL DETAILS**  
C.B. & Q.R.R. DYERHEAD  
FA. RT. 154 SEC. 14-VB1  
BUREAU COUNTY  
STA. 413+51.25 (1)

FOR INFORMATION ONLY

REVISIONS	
NAME	DATE

ILLINOIS DEPARTMENT OF TRANSPORTATION

**EXISTING BRIDGE PLANS**

SN 006-0036 (EBL)

SCALE: VERT. \_\_\_\_\_  
HORIZ. \_\_\_\_\_

DATE \_\_\_\_\_

DRAWN BY \_\_\_\_\_  
CHECKED BY \_\_\_\_\_