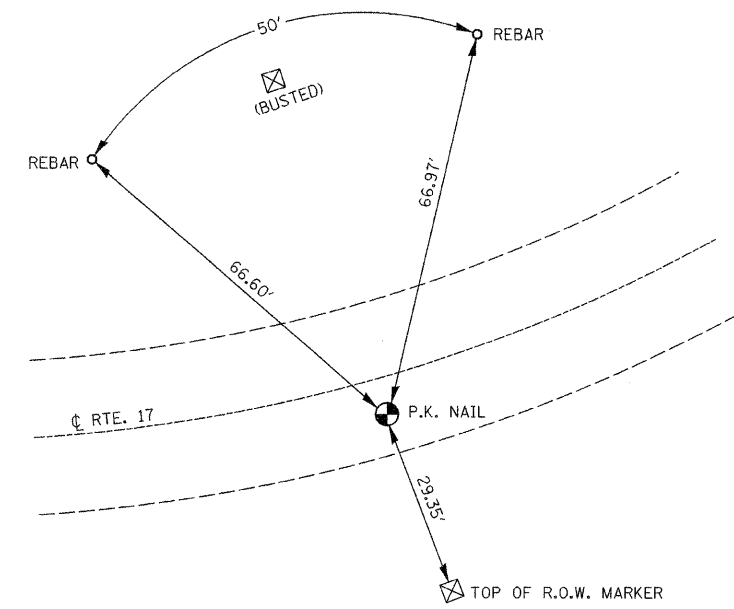
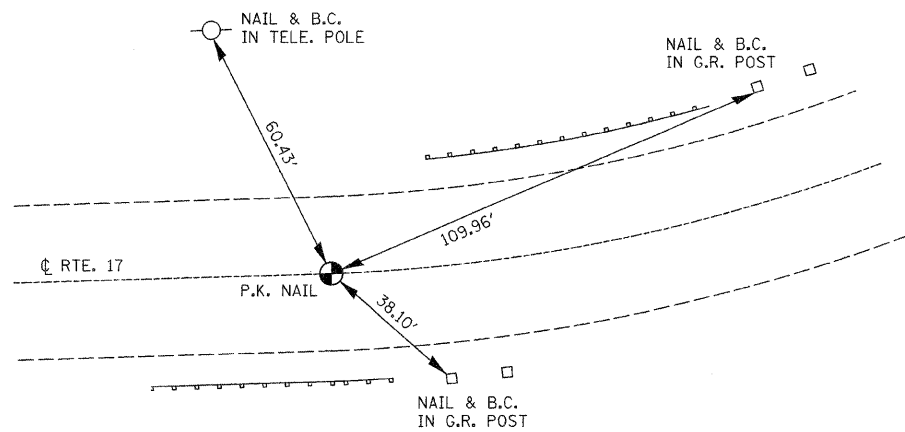


P.K. NAIL ON CL RTE. 17
P.O.T. STA. 39 + 53.918

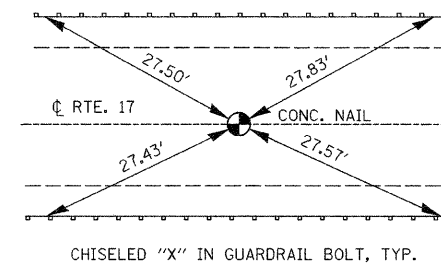


P.K. NAIL S. OF CL RTE. 17
P.I. STA. 56 + 00.00



P.K. NAIL ON CL RTE. 17
P.C. STA. 52 + 05.55

THE P.K. NAIL ON CL RTE. 17 SHALL BE REPLACED WITH A PERMANENT SURVEY MARKER, TYPE I.



P.K. NAIL @ CL RTE. 17
P.O.T. STA. 50 + 97.99

benesch

alfred benesch & company
 Engineers • Surveyors • Planners
 205 North Michigan Avenue, Suite 2400
 Chicago, Illinois 60601
 312-965-0450
 Job # 3838.01

FILE NAME = ...D366844-sh1-ATB.dgn	USER NAME = #USER#	DESIGNED - HMA	REVISED -
		DRAWN - HMA	REVISED -
	PLOT SCALE = #SCALE#	CHECKED - KJN	REVISED -
	PLOT DATE = 08/07/2008	DATE - 8/7/08	REVISED -

STATE OF ILLINOIS
DEPARTMENT OF TRANSPORTATION

TIE POINTS

SCALE: NONE SHEET NO. 1 OF 1 SHEETS STA. TO STA.

F.A.P. RTE. 649	SECTION (107) BR	COUNTY LASALLE	TOTAL SHEETS 24	SHEET NO. 6
CONTRACT NO. 66844				
FED. ROAD DIST. NO. ILLINOIS FED. AID PROJECT				