

F.A.P. RTE.	SECTION	COUNTY	TOTAL SHEETS	SHEET NO.
665	(144-B)BR	FULTON	67	1
FED. ROAD DIST. NO. 4	ILLINOIS	CONTRACT NO. 68091		

STATE OF ILLINOIS
DEPARTMENT OF TRANSPORTATION
DIVISION OF HIGHWAYS

PROPOSED HIGHWAY PLANS

F.A.P. ROUTE 665 (IL 116)
SECTION (144-B)BR
PROJECT NO. **ACF-0665 (009)**
FULTON COUNTY
C-94-111-00

D-94-077-00



LOCATION OF SECTION INDICATED THUS: - ■ -

INDEX OF SHEETS

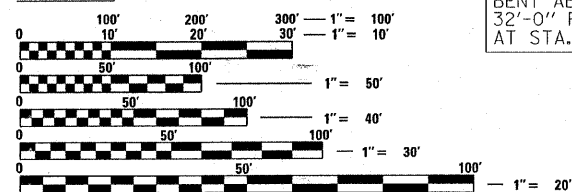
SHEET NO.	DESCRIPTION
1.	COVER SHEET
2.-3.	GENERAL NOTES
4.	STANDARDS AND UTILITY STATUS
5.-6.	SUMMARY OF QUANTITIES
7.-8.	SCHEDULE OF QUANTITIES
9.	TYPICAL CROSS SECTIONS
10.	PLAN AND PROFILE SHEET
11.	MISCELLANEOUS DETAILS
12.-13.	MAINTENANCE OF TRAFFIC
14.	PAVEMENT MARKINGS
15.	EROSION CONTROL PLAN AND NOTES
16.	WIDE LOAD DETOUR
17.-35.	STRUCTURE PLANS
36.	BORINGS
37.-48.	DISTRICT 4 CADD STANDARDS
49.-56.	CROSS SECTIONS - STAGE I
57.-64.	CROSS SECTIONS - STAGE II
65.-67.	EXISTING STRUCTURE PLANS

ILLINOIS DEPARTMENT OF TRANSPORTATION HIGHWAY STANDARDS
FOR LIST OF STANDARDS, SEE SHEET NO. 4

DESIGN DESIGNATION

FUNCTIONAL CLASSIFICATION: MINOR ARTERIAL (RURAL)
DESIGN SPEED: 55 MPH
POSTED SPEED: 55 MPH
ADT: (2000) ADT = 2400
PV: 90.5%
TRUCKS: 9.5%

SCALES:



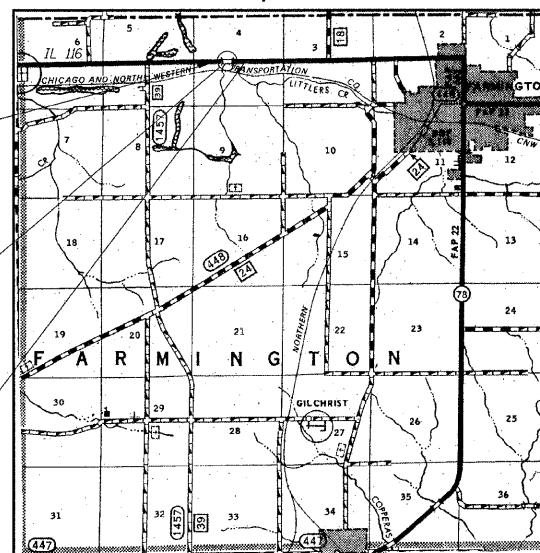
FULL SIZE PLANS HAVE BEEN PREPARED USING STANDARD ENGINEERING SCALES. REDUCED SIZED PLANS WILL NOT CONFORM TO STANDARD SCALES. IN MAKING MEASUREMENTS ON REDUCED PLANS, THE ABOVE SCALES MAY BE USED.

J.U.L.I.E.
JOINT UTILITY LOCATION INFORMATION FOR EXCAVATION
1-800-892-0123
OR 811

**PROJECT ENGINEER
PROJECT MANAGER**

**CONTRACT NO. 68091
CATALOG NO. 032287-00**

TOWNSHIP: FARMINGTON
R. 4 E., 4TH P.M.



IMPROVEMENT BEGINS
STATION 567+05.00

PROPOSED SECTION (144-B)BR; S.N. 029-0066 OVER
LITTLERS CREEK; SINGLE SPAN BULB T
GIRDER BRIDGE WITH POURED DECK ON INTEGRAL PILE
BENT ABUTMENTS; 101'-6" BK. - BK. ABUTS.;
32'-0" FC. - FC. PARAPETS; SKEW = 0°
AT STA. 571+32.50

IMPROVEMENT ENDS
STATION 574+50.00

LOCATION MAP

APPROXIMATE SCALE: 0 1 MILE

GROSS AND NET LENGTH OF SECTION = 745.00 FT. = 0.141 MI.
NET ROADWAY LENGTH = 643.50 FT. = 0.122 MI.
BRIDGE LENGTH = 101.50 FT. = 0.019 MI.

PROJECT ENGINEER: MAUREEN ADDIS

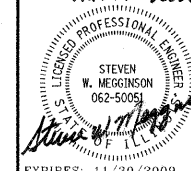
LIAISON ENGINEER: MIKE MOHAMED

STATE OF ILLINOIS
DEPARTMENT OF TRANSPORTATION
DIVISION OF HIGHWAYS

SUBMITTED Aug 14th 20 08
John E. Cannon
DEPUTY DIRECTOR OF HIGHWAYS, REGION 3 ENGINEER
October 3, 20 08
Eric E. Harman
ENGINEER OF DESIGN AND ENVIRONMENT
October 3, 20 08
Christine M. Reed
DIRECTOR OF HIGHWAYS, CHIEF ENGINEER

**PRINTED BY THE AUTHORITY
OF THE STATE OF ILLINOIS**

DATE: Aug 15, 2008



HAMPTON, LENZINI & RENWICK, INC.
CIVIL & STRUCTURAL ENGINEERS
LAND SURVEYORS

3085 STEVENSON DRIVE, SUITE 201
SPRINGFIELD, ILLINOIS 62703
(217) 546-3400

ELGIN • SPRINGFIELD

PROJECT NUMBER: 12-37-0003-1 DATE: 07/31/08