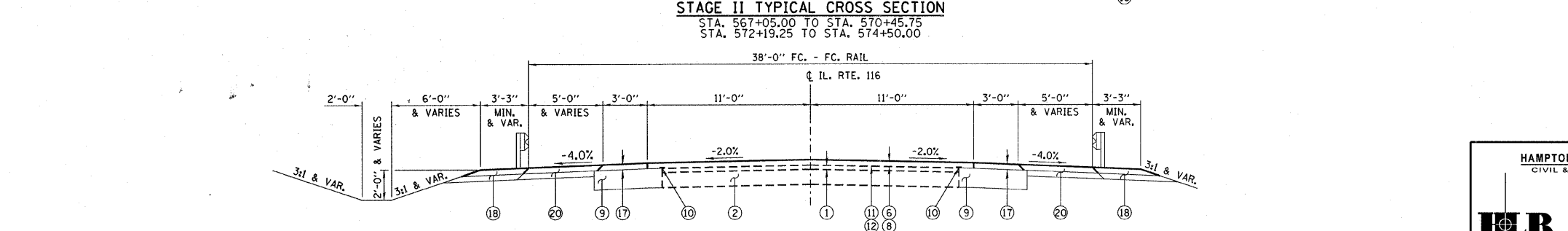
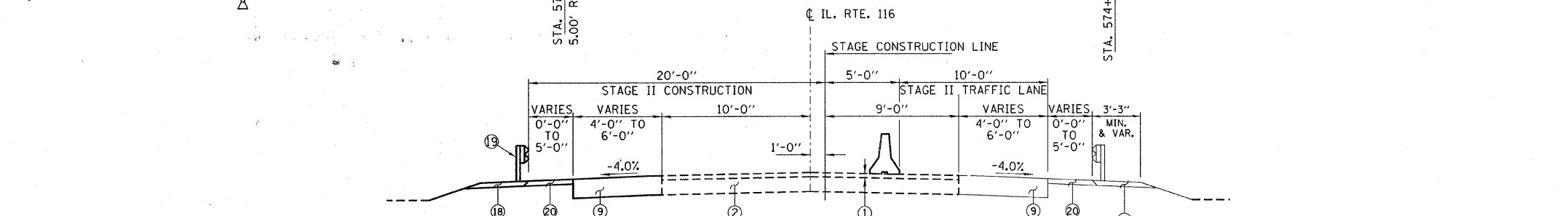
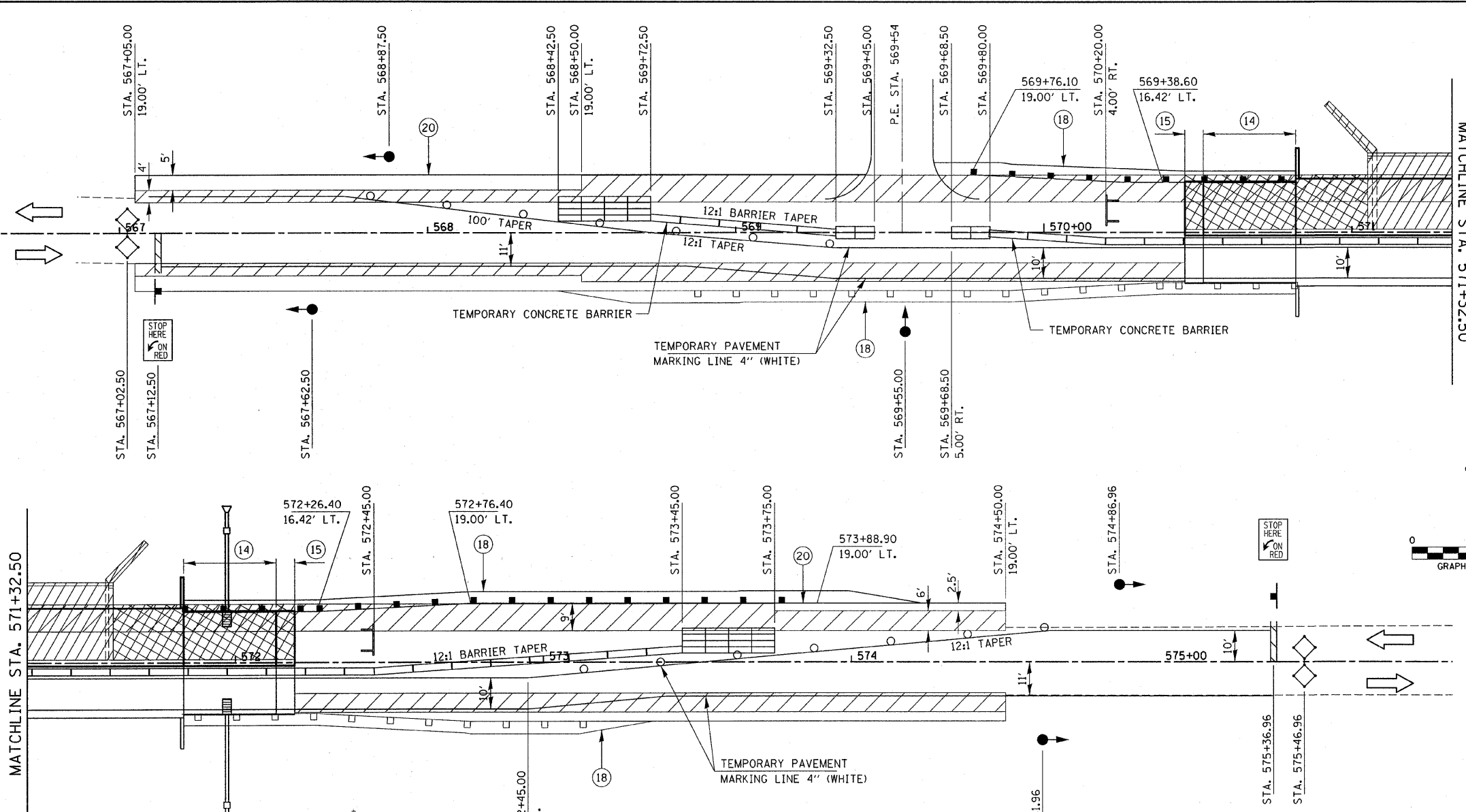


ROUTE NO.	SECTION	COUNTY	TOTAL SHEETS	SHEET NO.
F.A.P. 665	(144-B)BR	FULTON	67	13
FED. ROAD DIST. NO.		ILLINOIS	CONTRACT NO. 68091	



- LEGEND**
- ① EXISTING BITUMINOUS PAVEMENT (3" +/-)
 - ② EXISTING AGGREGATE BASE COURSE (STA 570+00 TO STA 574+00)
 - ③ EXISTING TYPE A GUTTER
 - ④ EXISTING STEEL PLATE BEAM GUARDRAIL
 - ⑤ EXISTING EARTH SHOULDERS
 - ⑥ EXISTING PCC/ HMA PAVEMENT
 - ⑦ HOT-MIX ASPHALT SURFACE COURSE, MIX D, N50 (1 1/2" THICKNESS MIN.)
 - ⑧ LEVELING BINDER (MACHINE METHOD) N50 (1.5" THICKNESS)
 - ⑨ HOT-MIX ASPHALT BASE COURSE (10" THICKNESS)
 - ⑩ STRIP REFLECTIVE CRACK CONTROL TREATMENT
 - ⑪ BITUMINOUS MATERIALS (PRIME COAT)
 - ⑫ AGGREGATE (PRIME COAT)
 - ⑬ HOT-MIX ASPHALT SURFACE REMOVAL, BUTT-JOINT
 - ⑭ BRIDGE APPROACH PAVEMENT
 - ⑮ BRIDGE APPROACH PAVEMENT CONNECTOR (FLEXIBLE)
 - ⑯ SUB-BASE GRANULAR MATERIAL TYPE A 4" SEE STD 420401
 - ⑰ HOT-MIX ASPHALT SHOULDERS 3"
 - ⑱ GUARDRAIL AGGREGATE EROSION CONTROL
 - ⑲ STEEL PLATE BEAM GUARDRAIL TYPE A
 - ⑳ HOT-MIX ASPHALT SHOULDERS 6"
- BITUMINOUS WIDENING
 - BRIDGE REMOVAL
 - PAVEMENT REMOVAL
 - IMPACT ATTENUATOR, TEMPORARY (FULLY REDIRECTIVE, NARROW)
 - IMPACT ATTENUATOR, TEMPORARY (NON-REDIRECTIVE)

- GENERAL NOTES**
1. FINAL SURFACE COURSE TO BE CONSTRUCTED AFTER STAGE II BARRIER IS REMOVED. PARAPETS SHALL HAVE GUARDRAIL ATTACHED PRIOR TO SWITCHING TRAFFIC.
 2. ONE ADDITIONAL SIGNAL HEAD, STOP LINE, MICROWAVE DETECTOR, AND ADDITIONAL PHASE WILL ALSO BE REQUIRED FOR THE ENTRANCE LT. STA. 569+54. THE COST FOR THESE ADDITIONAL ITEMS SHALL BE INCLUDED IN THE CONTRACT UNIT PRICE PER EACH FOR TRAFFIC CONTROL AND PROTECTION, STANDARD 701321. ACCESS TO THE ENTRANCE LT. STA. 569+54 IS TO BE PROVIDED AT ALL TIMES.
 3. ADDITIONAL REQUIREMENTS AND FURTHER INFORMATION FOR MAINTAINING TRAFFIC WITHIN THE PROJECT AREA SHALL BE AS INDICATED ON IDOT STANDARD 701321.
 4. EXISTING PAVEMENT WIDTH VARIES ALONG PROPOSED C. ADJUST PROPOSED PAVEMENT REMOVAL WIDTH ACCORDINGLY.
 5. SEE SHEET 7 FOR QUANTITIES.

HAMPTON, LENZINI & RENWICK, INC.
 CIVIL & STRUCTURAL ENGINEERS
 LAND SURVEYORS

3085 STEVENSON DRIVE, SUITE 201
 SPRINGFIELD, ILLINOIS 62703
 (217) 546-3400

ELGIN • SPRINGFIELD

PROJECT NUMBER: 12-37-0003-1 DATE: 07/31/08
 DESIGNED: L.F.S. CHECKED: S.W.M. DRAWN: D.T.M.

STAGE II CONSTRUCTION

F.A.P. ROUTE 665 (IL 116) OVER LITTLERS CREEK
 SECTION (144-B) BR
 FULTON COUNTY
 STATION 571+32.50
 STRUCTURE NO. 029-0066

PLOT DATE: 9/9/2008 FILE NAME: 37003-bht-stageconstruction.dgn