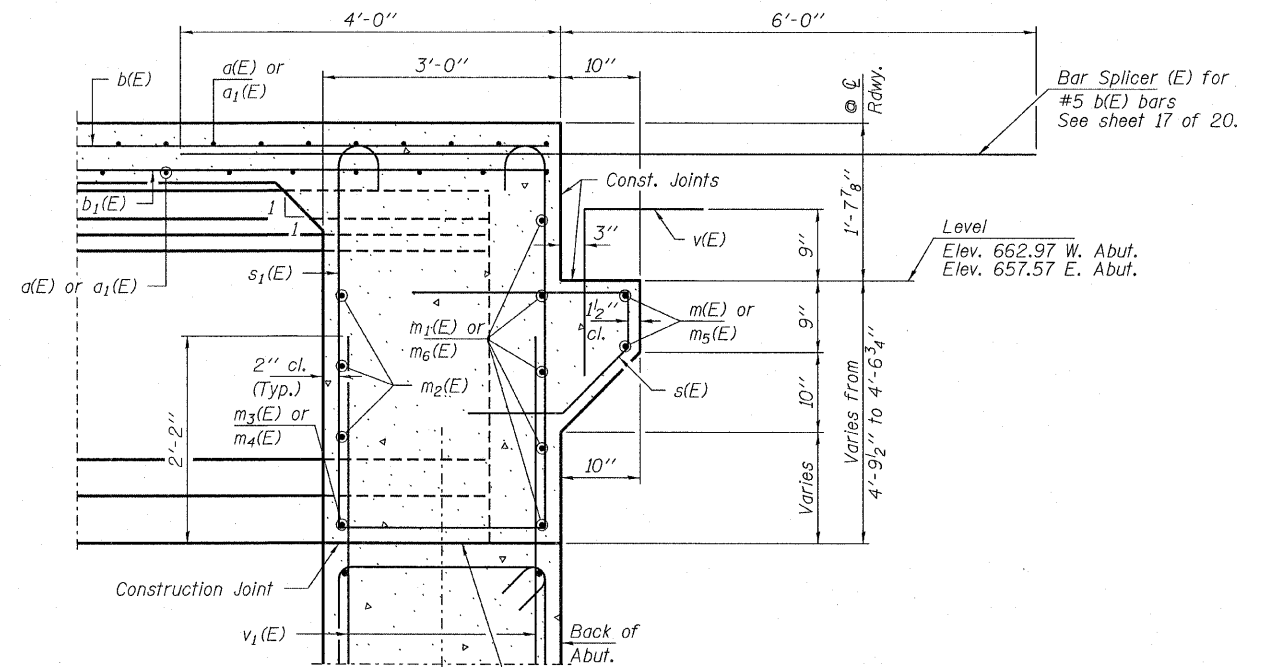


**DIAPHRAGM AT ABUTMENTS**

F.F. - Front Face  
B.F. - Back Face  
East Abutment Shown  
West Abutment Similar

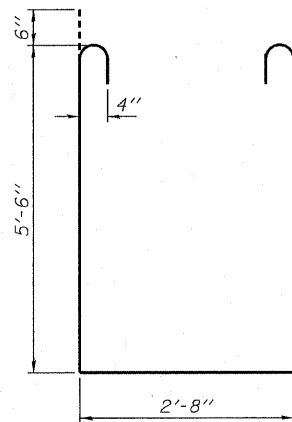
Notes: Reinforcement bars in diaphragms are billed with superstructure on sheet 12 of 20.  
Concrete in diaphragms is included with "Concrete Superstructure" on sheet 12 of 20.  
See sheet 15 of 20 for holes thru web for m<sub>2</sub>(E) bars.

**MIN. BAR LAP**  
#6 Bar = 2'-0"

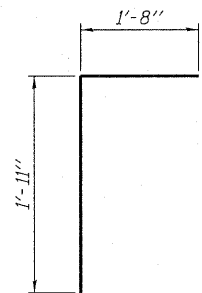


**SECTION A-A**

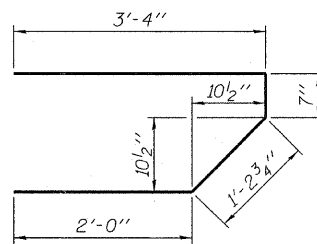
Beam ends shall be set on an initial 1/2" min. grout (2:1 sand and portland cement, very dry mix) to provide full bearing. Any excess grout squeezed out from under the beam shall be removed. Cost included with Concrete Structures.



**BAR s<sub>1</sub>(E)**



**BAR v(E)**



**BAR s(E)**

DESIGNED - P.S.L.
CHECKED - M.D.C.
DRAWN - D.A.B.
CHECKED - M.D.C.

**SUPERSTRUCTURE DETAILS**  
**STRUCTURE NO. 029-0066**

<b>HAMPTON, LENZINI &amp; RENWICK, INC.</b> CIVIL & STRUCTURAL ENGINEERS LAND SURVEYORS <b>HLR</b> 3085 STEVENSON DRIVE, SUITE 201 SPRINGFIELD, ILLINOIS 62703 (217) 546-3400 PROJECT NUMBER: 12-37-0003-1 DATE: 07/31/08	SHEET NO. 13	F.A.P.	SECTION	COUNTY	TOTAL SHEETS	SHEET NO.
	20 SHEETS	665	(144-B)BR	FULTON	67	29
			IL 116 OVER LITTLERS CREEK	CONTRACT NO. 68091		
			FED. ROAD DIST. NO. 4	ILLINOIS	FED. AID PROJECT	