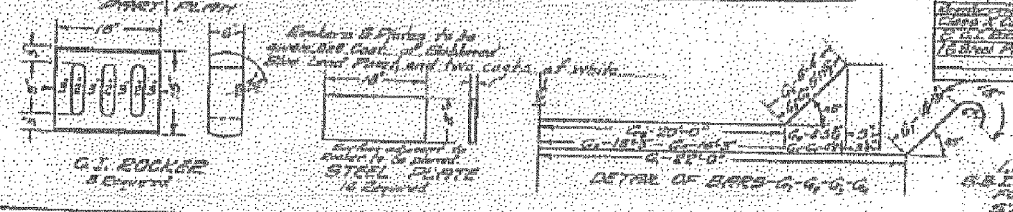


BILL OF MATERIAL

Qty	Size	Length	Remarks
212	2"	24'-0"	
100	2"	30'-0"	
100	2"	25'-0"	
512	2"	27'-0"	
80	2"	25'-0"	
80	2"	25'-0"	
16	2"	25'-0"	
16	2"	25'-0"	
16	2"	25'-0"	
5	2"	12'-0"	

Reinforcing Steel - 100%
 Cast in Concrete - 100%
 Cast in Concrete - 100%
 Cast in Concrete - 100%
 Cast in Concrete - 100%

DESIGNED - P.S.L.
 CHECKED - M.D.C.
 DRAWN - D.A.B.
 CHECKED - M.D.C.



LITTLE'S CREEK
 BRIDGE, ST. NO. 144-5
 FULTON COUNTY
 STATION 57+50

**EXISTING STRUCTURE PLANS
STRUCTURE NO. 029-0016**

DESIGNED - P.S.L.
 CHECKED - M.D.C.
 DRAWN - D.A.B.
 CHECKED - M.D.C.

HAMPTON, LENZINI & RENWICK, INC. CIVIL & STRUCTURAL ENGINEERS LAND SURVEYORS 3085 STEVENSON DRIVE, SUITE 201 SPRINGFIELD, ILLINOIS 62703 (217) 546-3400	SHEET NO. 1 3 SHEETS	F.A.P.	SECTION	COUNTY	TOTAL SHEETS	SHEET NO.
		665	(144-B)BR	FULTON	67	65
PROJECT NUMBER: 12-37-0003-1 DATE: 07/31/08		IL 116 OVER LITTLE'S CREEK		CONTRACT NO. 68091		
		FED. ROAD DIST. NO. 4 ILLINOIS		FED. AID PROJECT		