

F.A.P. RTE.	SECTION	COUNTY	TOTAL SHEETS	SHEET NO.
22	135W-2; RS-5	FULTON	282	57
STA.		TO STA.		
FED. ROAD DIST. NO.		ILLINOIS FED. AID PROJECT		

note: taper of EB urban shoulder begins at curve P.C. station 278+33.72

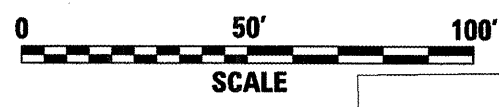
Project Ends Sta. 282+28

Construction Ends Sta. 282+58

Transition B6.24 to B6.12 station 282+28 to 282+38

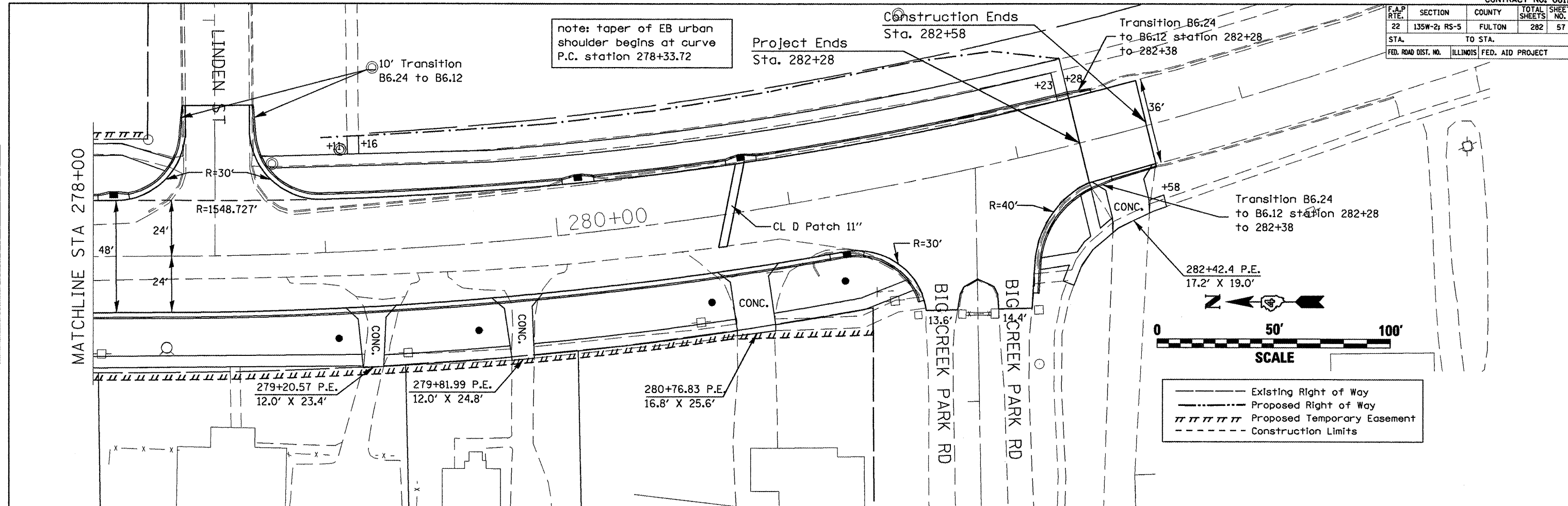
Transition B6.24 to B6.12 station 282+28 to 282+38

282+42.4 P.E.
17.2' X 19.0'

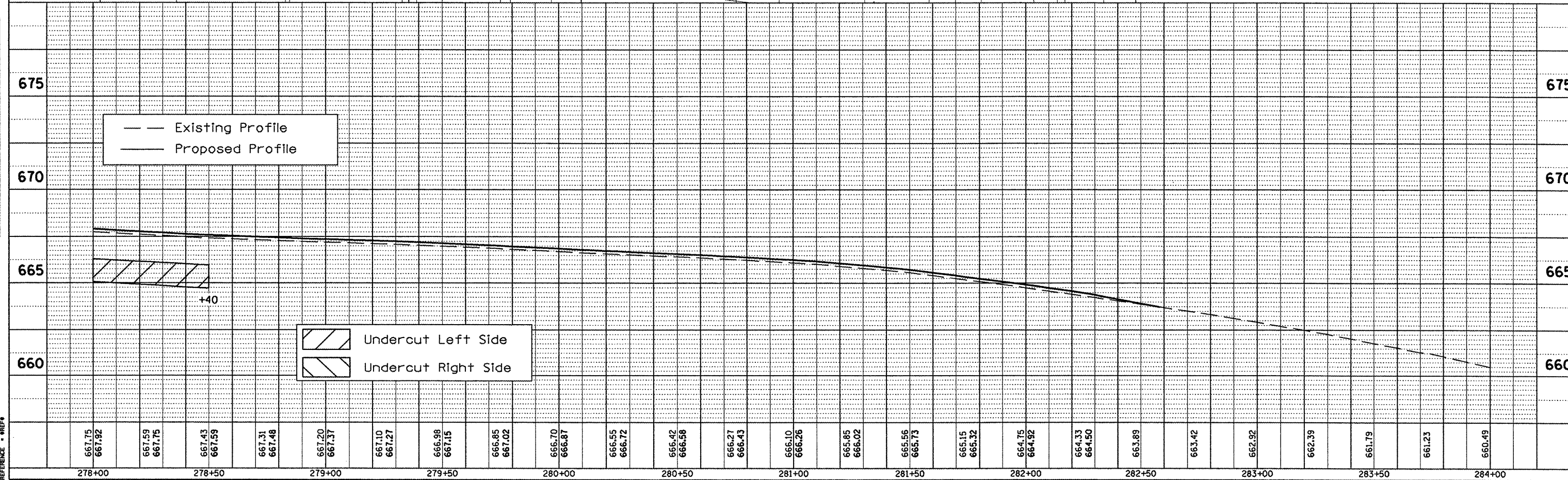


- Existing Right of Way
- Proposed Right of Way
- Proposed Temporary Easement
- Construction Limits

PLAN	DATE	BY
REVISIONS		
NO.		
DATE		
BY		
DESCRIPTION		



PROFILE	DATE	BY
REVISIONS		
NO.		
DATE		
BY		
DESCRIPTION		



PLOT DATE = 8/16/2006
 FILE NAME = C:\Users\17866\Documents\genera12.dgn
 PLOT SCALE = 42.4873' / IN.
 REFERENCE = #REF#