

F.A.P. RTE.	SECTION	COUNTY	TOTAL SHEETS	SHEET NO.
22	135W-2; RS-5	FULTON	282	58
STA.		TO STA.		
FED. ROAD DIST. NO.		ILLINOIS FED. AID PROJECT		

GENERAL CONSTRUCTION NOTES

Adequate pavement drainage shall be maintained during all stages of construction.

GENERAL STAGING NOTES

All construction staging is suggested and can be revised upon written approval from the resident engineer two weeks prior to starting work. There will be no adjustment in the traffic control unit price due to the contractor changing the planned construction sequence.

STAGE IA CONSTRUCTION ACTIVITY

1. Build temporary pavement LT station 224+90 to 229+50
2. Build staging slope LT station 224+90 to 229+50
3. Remove guardrail LT station 224+50 to 228+50
3. Remove guardrail RT station 224+39 to 227+39

STAGE IB CONSTRUCTION ACTIVITY

1. Build retaining wall RT station 225+00 to 227+35.59
2. Build golf cart tunnel station 227+00 from 3' LT of CL to 30' RT of CL
3. Build Conc. Gutter Ty A RT station 225+00 to 227+10 & outlet
4. Place Class D Type IV 11" Patch over tunnel

STAGE IA TRAFFIC CONTROL

701326

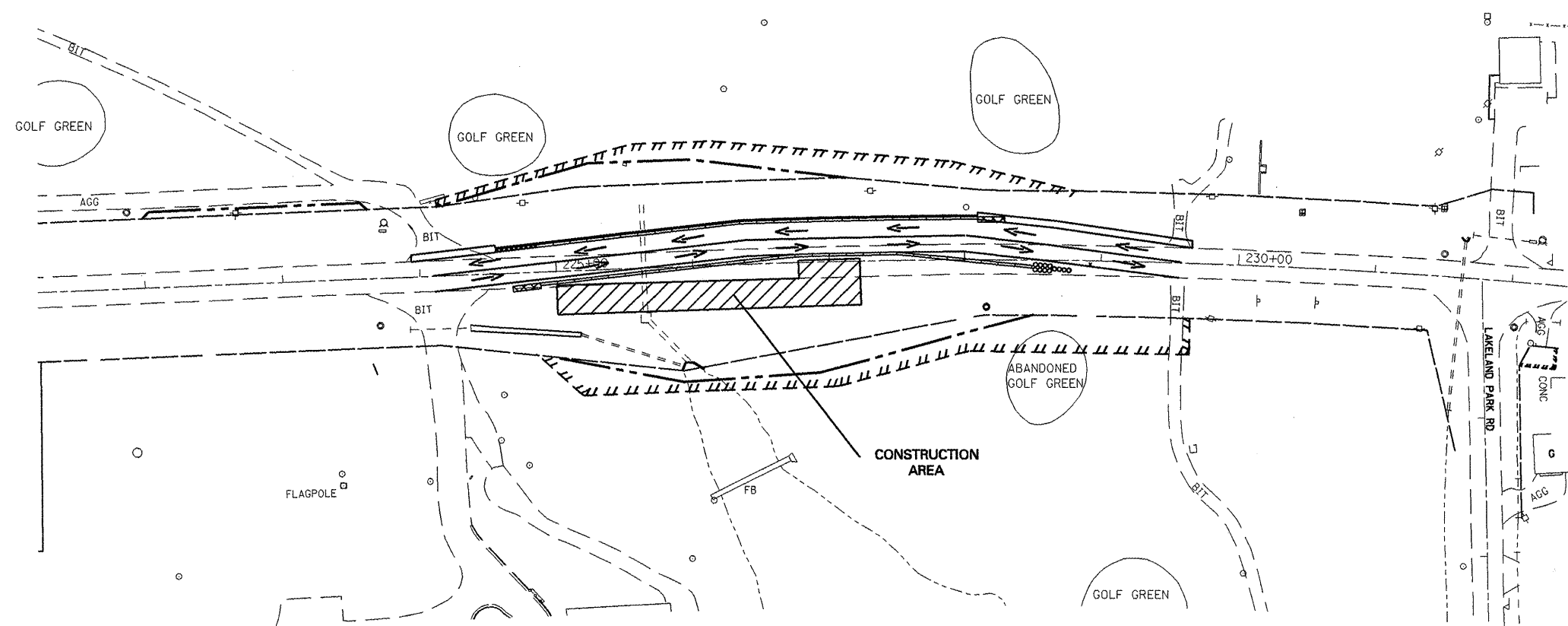
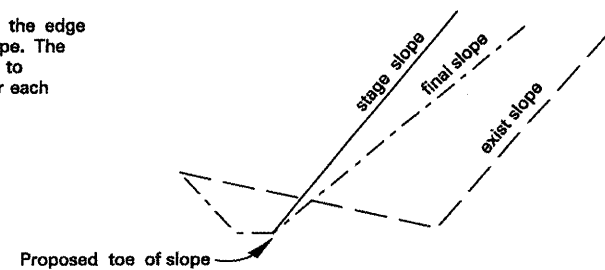
STAGE IB TRAFFIC CONTROL

1. Traffic shifts east to temporary pavement
2. Temporary concrete barrier LT station 224+86 to 228+10
3. Temporary concrete barrier RT station 224+88 to 228+49
4. TRAFFIC CONTROL AND PROTECTION (SPECIAL), LOCATION 1
5. Temporary impact attenuator types:
 - Northwest - Fully Redirective, Wide, Test Level 3
 - Northeast - Fully Redirective, Narrow, Test Level 3
 - Southwest - Non-Redirective, Test Level 3
 - Southeast - Fully Redirective, Wide, Test Level 3

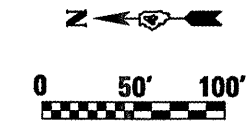
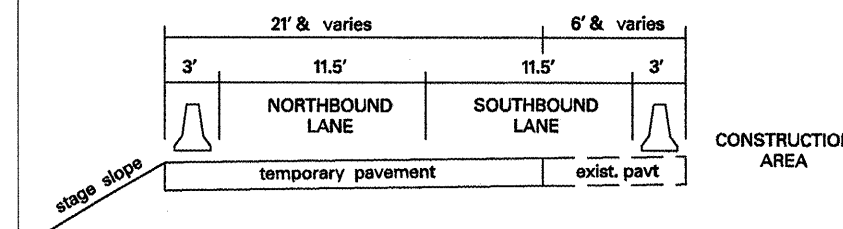
STAGING SLOPE

Staging slope consists of a temporary slope from the edge of temporary pavement to the proposed toe of slope. The excess fill will be removed after stage construction to create the final slope. Staging slopes are listed for each affected cross section:

223+00	(1:13.3)	226+50	(1:2.6)
223+50	(1:7.4)	227+50	(1:2.4)
224+50	(1:2.6)	228+00	(1:2.9)
225+00	(1:2.6)	228+50	(1:3.4)
225+59.18	(1:2.7)	229+00	(1:5.4)
225+94.96	(1:2.6)		



STAGE IB TYPICAL SECTION



REVISIONS	
NAME	DATE

ILLINOIS DEPARTMENT OF TRANSPORTATION
Retaining Wall and Tunnel Stage I Construction
 VERT. SCALE: _____
 HORIZ. SCALE: _____
 DATE: _____
 DRAWN BY: _____
 CHECKED BY: _____

 W20-1(O)-48 400' from start of taper on north end and south end	 W13-1(O)-2424 200' from start of taper on north end (Stage IB)	 W13-1(O)-2424 200' from start of taper on south end (Stage IB)
--	---	---

PLOT DATE = 04/10/2008
 FILE NAME = c:\projects\68114\176\autocad\general\stage1.dwg
 PLOT SCALE = 1/8"=1'-0" / IN.
 USER NAME = huoh1000