

F.A.P. RTE.	SECTION	COUNTY	TOTAL SHEETS	SHEET NO.
22	135W-2; RS-5	FULTON	282	62
STA.		TO STA.		
FED. ROAD DIST. NO.		ILLINOIS FED. AID PROJECT		

STAGE III CONSTRUCTION ACTIVITY

1. Remove pavement LT station 263+31 to 263+83 and LT station 269+77 to 271+52
2. Build hot-mix asphalt base course, combination concrete curb and gutter, storm sewer, concrete entrances, and sidewalk LT station 263+31 to 263+83 and LT station 269+77 to 271+52

LEGEND

- Hot-Mix Asphalt Base Course 10.5"
- Variable Milling
- Temporary Pavement
- Traffic Lane
- Flagger

STAGE III TRAFFIC CONTROL

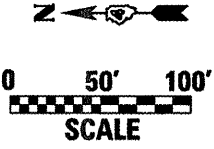
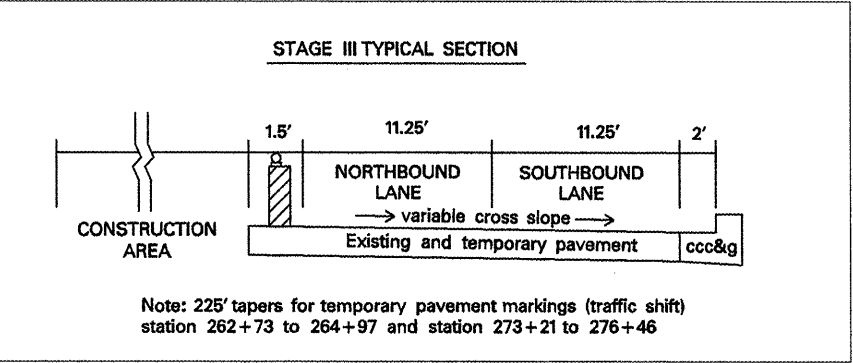
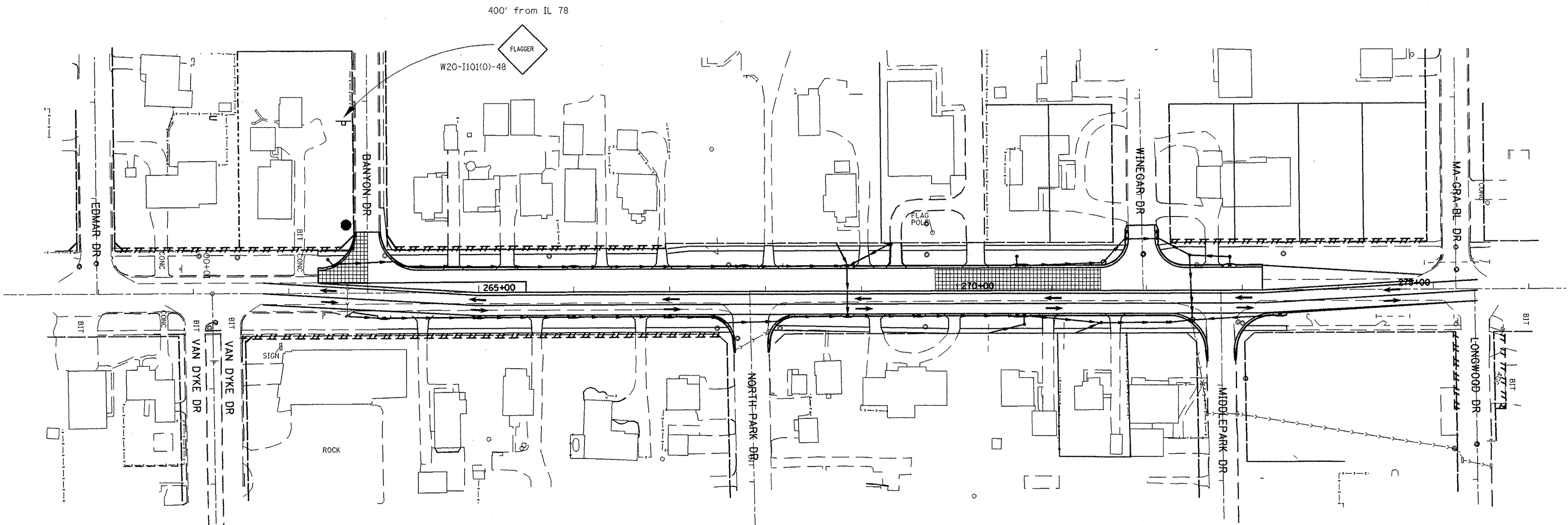
1. Traffic shifts west to temporary pavement
2. TRAFFIC CONTROL AND PROTECTION (SPECIAL), LOCATION 2
3. Use Vertical Barricades (STD 701901) at 50' spacings along RT edge of NB lane

GENERAL CONSTRUCTION NOTES

1. Adequate pavement drainage shall be maintained during all stages of construction.
2. Use temporary pavement over storm sewer where the pavement is to be removed during a later stage.

GENERAL STAGING NOTES

All construction staging is suggested and can be revised upon written approval from the resident engineer two weeks prior to starting work. There will be no adjustment in the traffic control unit price due to the contractor changing the planned construction sequence.



 W20-1(O)-48 400' from start of taper on north end and south end	 W1-4R(O)-48 200' from start of taper on north end	 W1-4L(O)-48 200' from start of taper on south end
 W13-1(O)-2424 35 MPH	 W13-1(O)-2424 35 MPH	 W13-1(O)-2424 35 MPH

REVISIONS	
NAME	DATE

ILLINOIS DEPARTMENT OF TRANSPORTATION

New Pavement Stage III Construction

SCALE: VERT. _____ HORIZ. _____ DATE _____

DRAWN BY _____ CHECKED BY _____

PLOT DATE = 8/16/2006
 FILE NAME = c:\projects\1780\autocad\general\2.dwg
 PLOT SCALE = 1/8"=1'-0"
 USER NAME = hudelecom