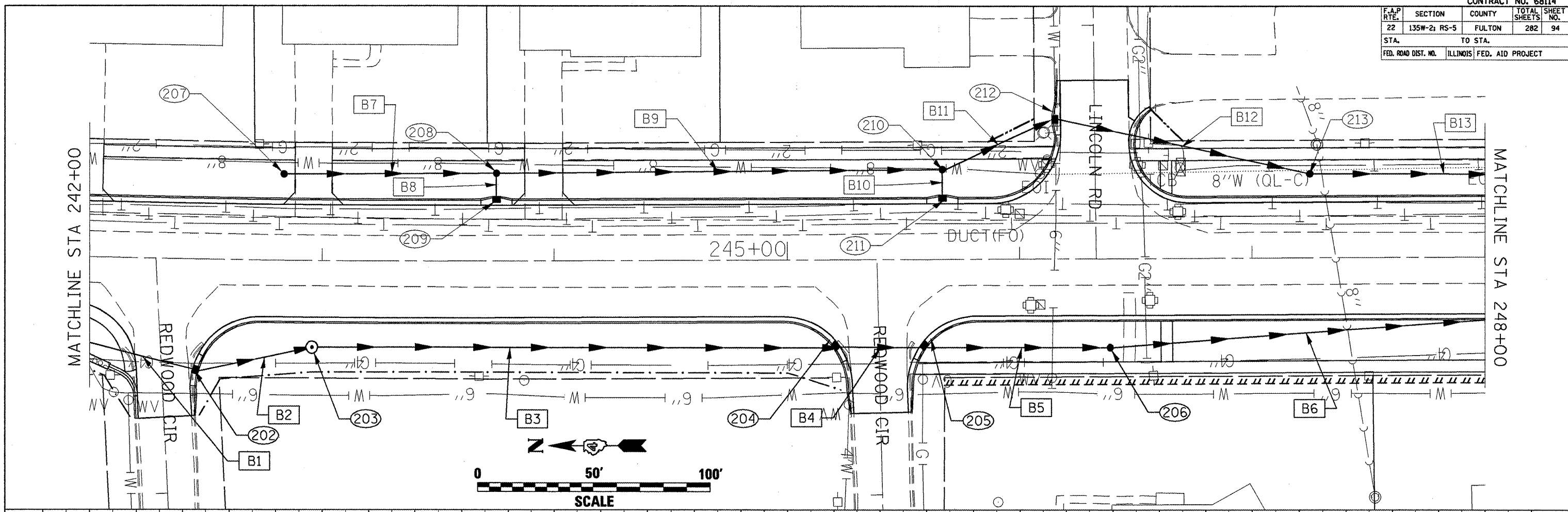


CONTRACT NO. 68114				
F.A.P. RTE.	SECTION	COUNTY	TOTAL SHEETS	SHEET NO.
22	135W-2; RS-5	FULTON	282	94
STA.			TO STA.	
FED. ROAD DIST. NO.			ILLINOIS FED. AID PROJECT	

DATE	BY

DATE	BY



685																									685					
680	STRUCTURE #202 242+44 RT 55.9 FT G-1 INLET-MANHOLE 4 FT CAST ELEV. 679.53 INVERT ELEV. NORTH 676.51 INVERT ELEV. SOUTH 676.51		STRUCTURE #203 242+96 RT 36.7 FT MANHOLE TY A 4 FT TY 1 CLOSED CAST ELEV. 680.14 INVERT ELEV. NORTH 676.23 INVERT ELEV. SOUTH 676.23		STRUCTURE #204 245+19 RT 32.9 FT G-1 INLET-MANHOLE 4 FT CAST ELEV. 678.33 INVERT ELEV. NORTH 674.90 INVERT ELEV. SOUTH 674.90		STRUCTURE #205 245+61 RT 32.9 FT G-1 INLET-MANHOLE 4 FT CAST ELEV. 678.08 INVERT ELEV. NORTH 674.69 INVERT ELEV. SOUTH 674.03		STRUCTURE #206 246+39 RT 37.6 FT TY B INLET TY 8 F&G CAST ELEV. 675.70 INVERT ELEV. NORTH 673.26 INVERT ELEV. SOUTH 673.26																680					
675	15" RCCP 50.3 FT 2.2%											15" SS PVC SDR 26 45.9 FT 0.6%					15" SS CL A TY 1 221.8 FT 0.6%													675
670	15" SS CL A TY 1 35.8 FT 0.6%											15" SS PVC SDR 26 77.3 FT 1.0%					15" SS CL A TY 2 165.1 FT 0.6%													670
	679.49	679.66	679.48	679.64	679.42	679.59	679.27	679.44	679.13	679.30	679.00	679.17	678.76	678.92	678.45	678.62	678.14	678.30	677.83	677.99	677.53	677.69	677.24	677.41	676.94	677.11				
	242+00		242+50		243+00		243+50		244+00		244+50		245+00		245+50		246+00		246+50		247+00		247+50		248+00					

PLOT DATE = 6/19/2008
 FILE NAME = c:\proje\m\17\bantn\general.dwg
 USER NAME = j. hickerson
 SCALE = 1/4" = 1'-0"
 DRAWING NO. = 424974-7