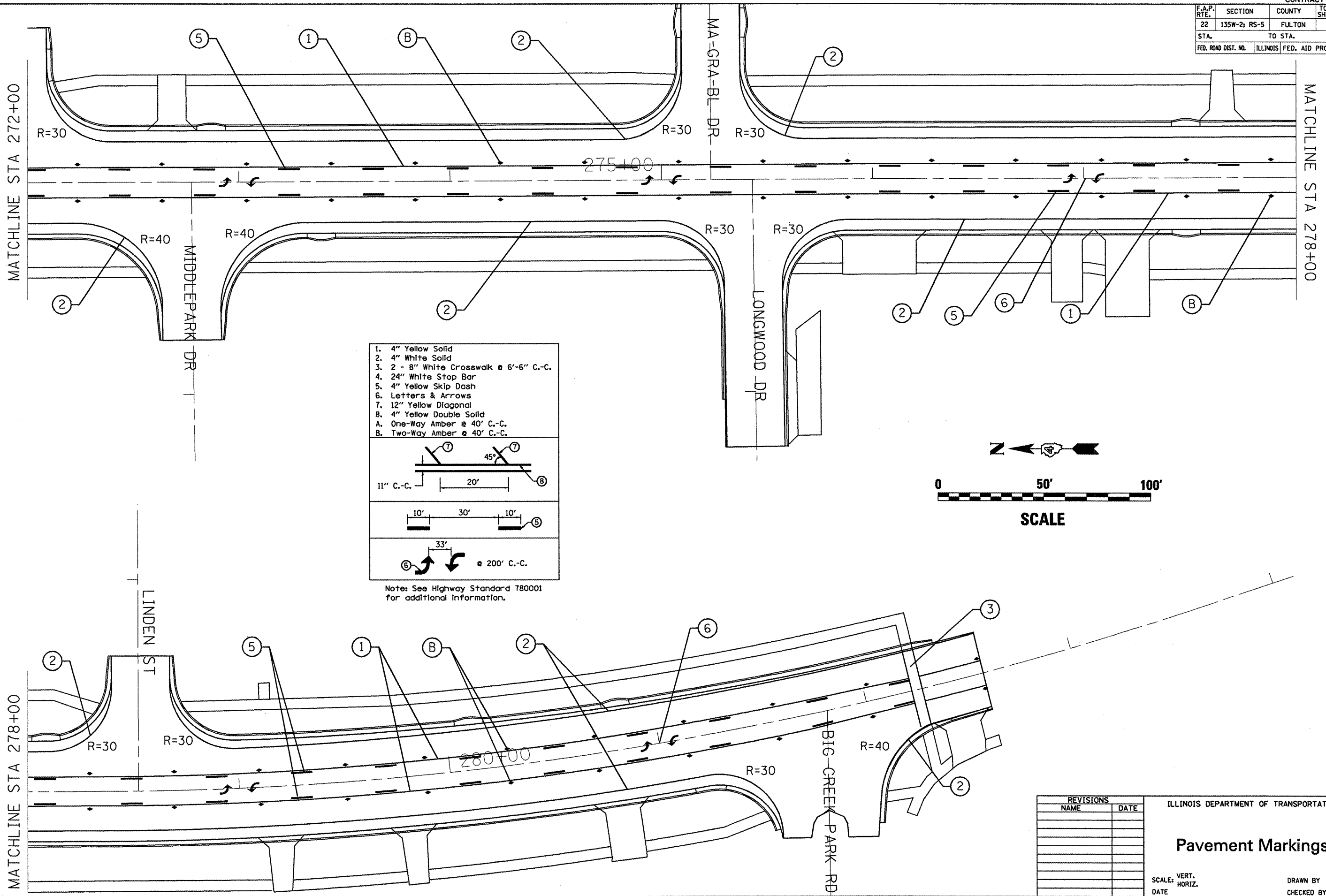
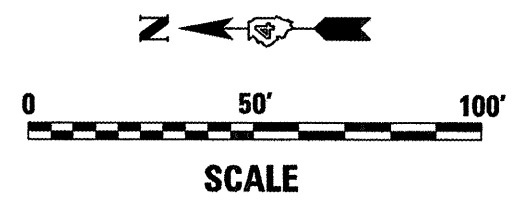


F.A.P. RTE.	SECTION	COUNTY	TOTAL SHEETS	SHEET NO.
22	135W-21 RS-5	FULTON	282	116
STA.		TO STA.		
FED. ROAD DIST. NO.		ILLINOIS FED. AID PROJECT		



1. 4" Yellow Solid
2. 4" White Solid
3. 2 - 8" White Crosswalk @ 6'-6" C.-C.
4. 24" White Stop Bar
5. 4" Yellow Skip Dash
6. Letters & Arrows
7. 12" Yellow Diagonal
8. 4" Yellow Double Solid
A. One-Way Amber @ 40' C.-C.
B. Two-Way Amber @ 40' C.-C.

Note: See Highway Standard 780001 for additional information.



PLOT DATE = 8/18/2008
 FILE NAME = c:\pav\proj\1760amton\general2.dgn
 PLOT SCALE = 1"=40' / 1"=100'
 REFERENCE = MRP

REVISIONS	
NAME	DATE

ILLINOIS DEPARTMENT OF TRANSPORTATION

Pavement Markings

SCALE: VERT. DRAWN BY
 HORIZ. CHECKED BY
 DATE