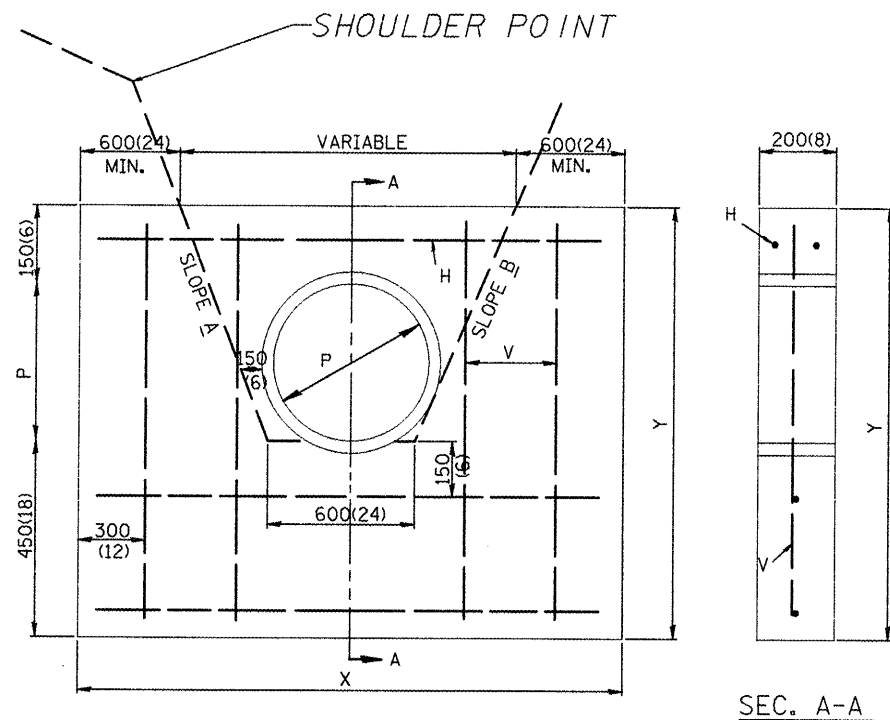


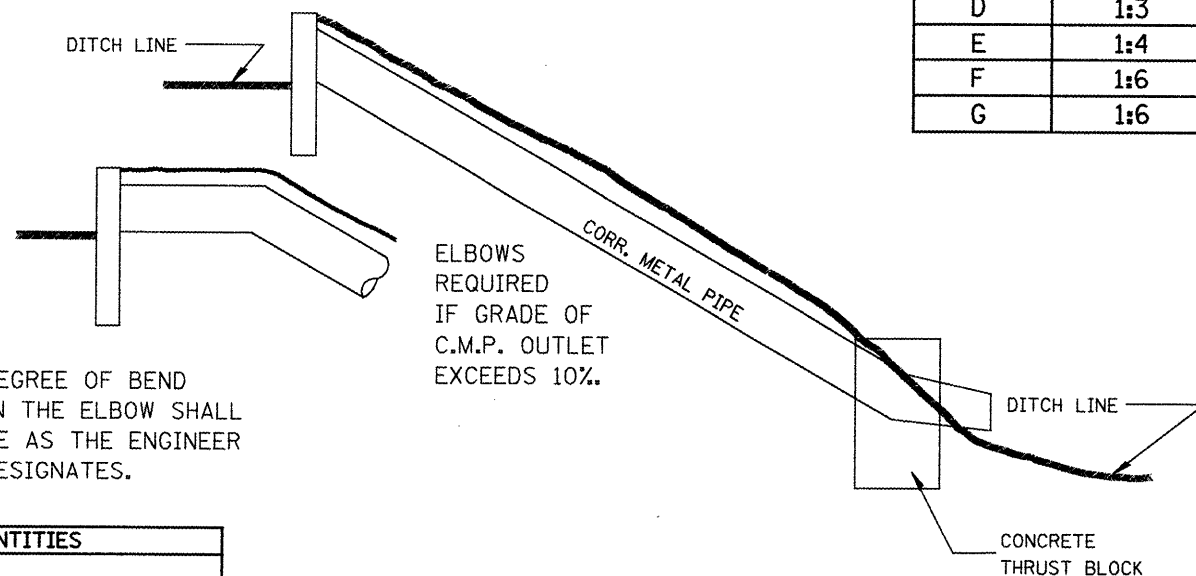
F.A.P. RTE.	SECTION	COUNTY	TOTAL SHEETS	SHEET NO.
22	135W-2 RS-5	FULTON	282	162
STA.		TO STA.		
FED. ROAD DIST. NO.	ILLINOIS	FED. AID PROJECT		



General Notes

1. CLASS "SI" CONCRETE TO BE USED FOR CAST-IN-PLACE WALL.
2. ALL REINFORCING BARS ARE #15 (#4).
3. LENGTH AND SIZE CORR. METAL PIPE AS SHOWN ON PLANS
4. TOP OF WALL TO BE BELOW ELEVATION OF SHOULDERS

DESIGN	SLOPE A	SLOPE B
A	1:2	1:2
B	1:3	1:2
C	1:4	1:2
D	1:3	1:3
E	1:4	1:3
F	1:6	1:4
G	1:6	1:3



DESIGN	P	X	Y	CONCRETE	REINFORCING BARS	
					m <sup>3</sup> (CU.YDS.)	H
12-A	300(12)	3.66m(12'-0")	914(36)	0.69(0.9)	27(37)	3.51m (11'-6") 762(30)
12-B	300(12)	3.96m(13'-0")	914(36)	0.76(1.0)	30(41)	3.96m (13'-0") 762(30)
12-C	300(12)	4.57m(15'-0")	914(36)	0.84(1.1)	33(45)	4.42m (14'-6") 762(30)
12-D	300(12)	4.57m(15'-0")	914(36)	0.84(1.1)	33(45)	4.42m (14'-6") 762(30)
12-E	300(12)	5.03m(16'-6")	914(36)	0.92(1.2)	35(49)	4.88m (16'-0") 762(30)
15-A	375(15)	3.96m(13'-0")	991(39)	0.69(0.9)	29(41)	3.81m (12'-6") 838(33)
15-B	375(15)	4.50m(14'-9")	991(39)	0.92(1.2)	33(45)	4.34m (14'-3") 838(33)
15-C	375(15)	5.03m(16'-6")	991(39)	0.99(1.3)	36(50)	4.88m (16'-0") 838(33)
15-D	375(15)	5.03m(16'-6")	991(39)	0.99(1.3)	36(50)	4.88m (16'-0") 838(33)
15-E	375(15)	5.56m(18'-3")	991(39)	1.07(1.4)	39(55)	5.41m (17'-9") 838(33)
15-F	375(15)	7.16m(23'-6")	991(39)	1.45(1.9)	49(69)	7.01m (23'-0") 838(33)
15-G	375(15)	6.63m(21'-9")	991(39)	1.30(1.7)	46(64)	6.48m (21'-3") 838(33)
18-A	450(18)	4.37m(14'-4")	1.07m(3'-6")	0.92(1.2)	32(44)	4.11m (13'-6") 914(36)
18-B	450(18)	4.88m(16'-0")	1.07m(3'-6")	0.99(1.3)	35(49)	4.72m (15'-6") 914(36)
18-C	450(18)	5.49m(18'-0")	1.07m(3'-6")	1.15(1.5)	39(55)	5.33m (17'-6") 914(36)
18-D	450(18)	5.49m(18'-0")	1.07m(3'-6")	1.15(1.5)	39(55)	5.33m (17'-6") 914(36)
18-E	450(18)	6.10m(20'-0")	1.07m(3'-6")	1.30(1.7)	43(60)	5.94m (19'-6") 914(36)
18-F	450(18)	7.92m(26'-0")	1.07m(3'-6")	1.68(2.2)	55(76)	7.77m (26'-6") 914(36)
18-G	450(18)	7.32m(24'-0")	1.07m(3'-6")	1.53(2.0)	51(71)	7.16m (23'-6") 914(36)
24-A	600(24)	4.88m(16'-0")	1.22m(4'-0")	1.15(1.5)	36(51)	4.72m (15'-6") 1.07m (3'-6")
24-B	600(24)	5.64m(18'-6")	1.22m(4'-0")	1.30(1.7)	41(57)	5.49m (18'-0") 1.07m (3'-6")
24-C	600(24)	6.40m(21'-0")	1.22m(4'-0")	1.53(2.0)	46(64)	6.25m (20'-6") 1.07m (3'-6")
24-D	600(24)	6.40m(21'-0")	1.22m(4'-0")	1.53(2.0)	46(64)	6.25m (20'-6") 1.07m (3'-6")
24-E	600(24)	7.16m(23'-6")	1.22m(4'-0")	1.68(2.2)	51(71)	7.01m (23'-0") 1.07m (3'-6")
30-A	750(30)	5.49m(18'-0")	1.37m(4'-6")	1.45(1.9)	41(57)	5.33m (17'-6") 1.22m (4'-0")
30-B	750(30)	6.40m(21'-0")	1.37m(4'-6")	1.53(2.0)	47(65)	6.25m (20'-6") 1.22m (4'-0")
30-C	750(30)	7.32m(24'-0")	1.37m(4'-6")	1.99(2.6)	53(73)	7.16m (23'-6") 1.22m (4'-0")
30-D	750(30)	7.32m(24'-0")	1.37m(4'-6")	1.99(2.6)	53(73)	7.16m (23'-6") 1.22m (4'-0")
30-E	750(30)	8.33m(27'-0")	1.37m(4'-6")	2.22(2.9)	58(81)	8.08m (26'-6") 1.22m (4'-0")

All slope ratios are expressed as units of vertical displacement to units of horizontal displacement (V:H).

All dimensions are in millimeters (Inches) unless otherwise noted.

QUANTITIES	
CALC. BY:	DATE:
CHECKED BY:	DATE:
QUANTITY CALCULATIONS ARE ON FILE AT THE DISTRICT 4 OFFICE, BUREAU OF PROJECT IMPLEMENTATION, DOCUMENTATION SECTION	

DATE	REVISIONS	BY
1-1-97	RENUM. J-10.01, METRICS, NEW REVISION BOX, ADDED QUANTITY CALCULATION BOX, REVISED NOTES	T.P.
9-15-05	REVISED DESIGNER NOTE	M.M.A.

ILLINOIS DEPARTMENT OF TRANSPORTATION
DISTRICT CADD STANDARD
CONCRETE DITCH CHECK
CADD STANDARD 503001-D4 SCALE: NOT TO SCALE
DRAWN BY CADD CHECKED BY