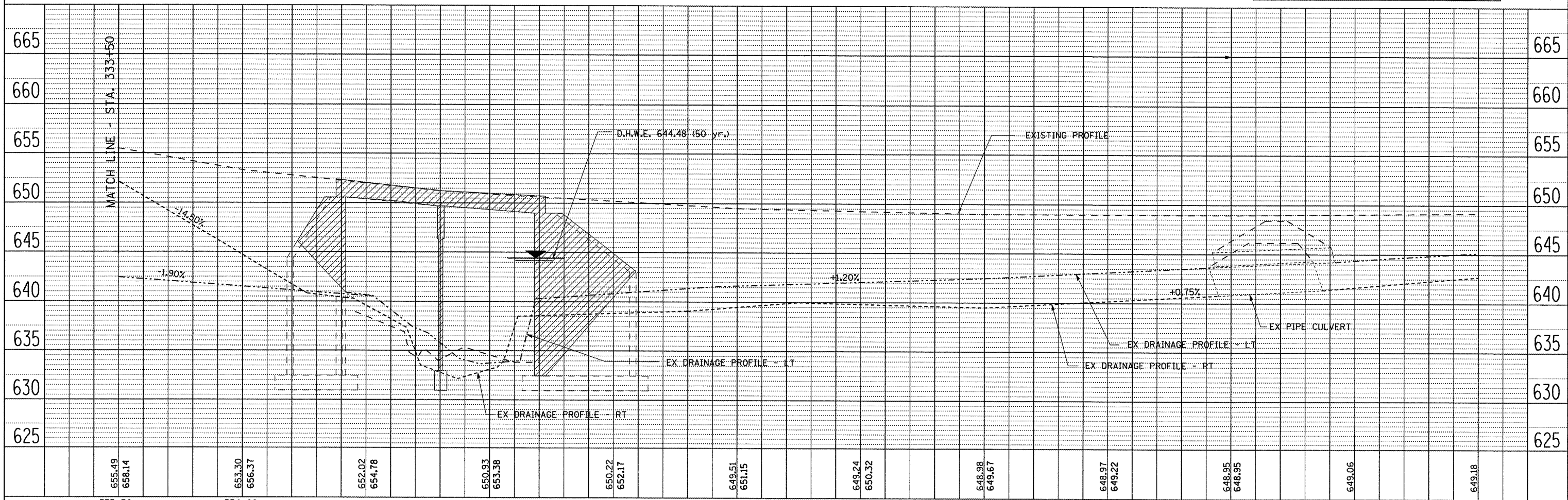
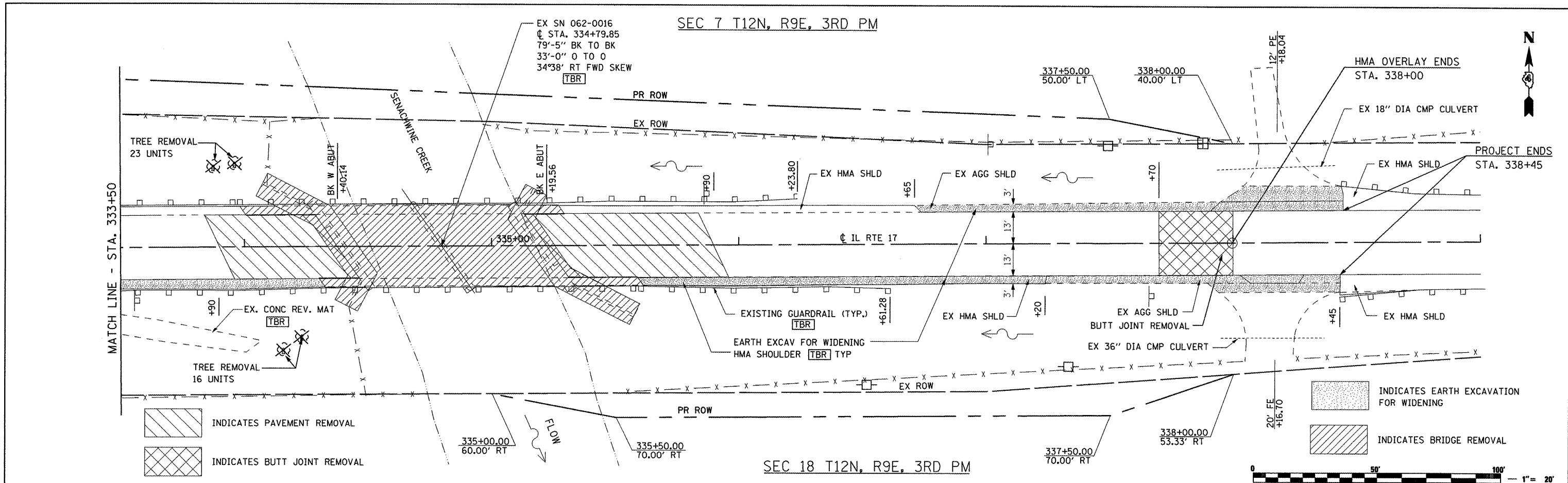


PLAN	DATE
SURVEYED	BY
ALIGNED	BY
CHECKED	BY
RT. OF WAY CHECKED	BY
NO. OF WAY CHECKED	BY
NO.	BY

PROFILE	DATE
SURVEYED	BY
GRADES CHECKED	BY
B.M. NOTED	BY
STRUCTURE NOTATIONS CHECKED	BY
NO.	BY



FILE NAME =	USER NAME = .USER.	DESIGNED -	REVISED -	<b>STATE OF ILLINOIS</b> <b>DEPARTMENT OF TRANSPORTATION</b>	<b>EXISTING PLAN AND PROFILE - REMOVAL</b> <b>ILLINOIS ROUTE 17 OVER SENACHWINE CREEK</b>	F.A.P. RTE.	SECTION	COUNTY	TOTAL SHEETS	SHEET NO.
...CAD\roadway\RemPlan\Prof_2.sht		DRAWN -	REVISED -			645	(105BR)BR	Marshall	71	12
PLOT SCALE = #SCALE#		CHECKED -	REVISED -			CONTRACT NO. 68479				
PLOT DATE = 7/31/2008 12:30:57 PM		DATE -	REVISED -			FED. ROAD DIST. NO. 4 ILLINOIS FED. AID PROJECT				