

Operator: dbeberling

Date: 8/26/2008

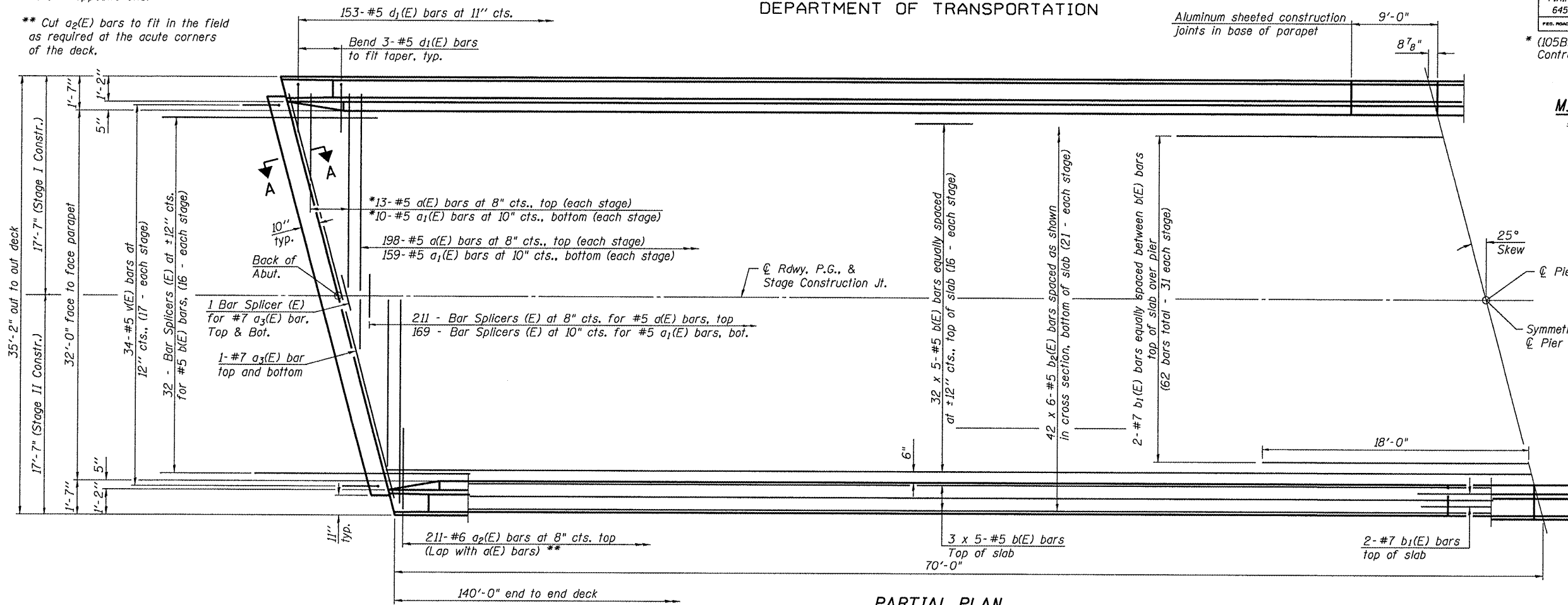
Filename: L:\Jobs\DOT BBS\6956 BBS Various\Various\6956\03\CADD_Struct\062-0072 4-18-08.dgn

STATE OF ILLINOIS
DEPARTMENT OF TRANSPORTATION

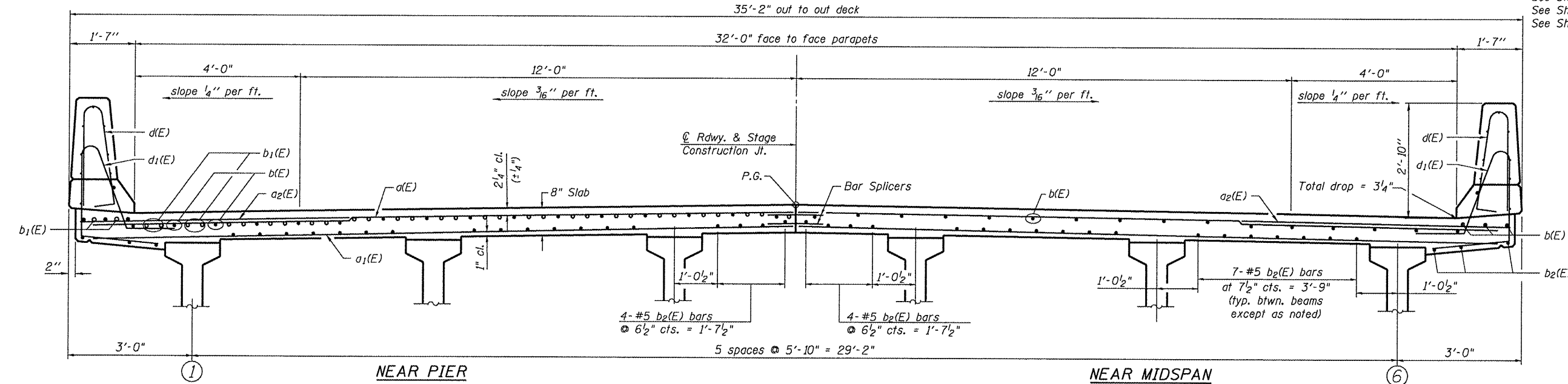
ROUTE NO.	SECTION	COUNTY	TOTAL SHEETS	SHEET NO.
F.A.P. 645	*	Marshall	71	26
FED. ROAD DIST. NO. 4		ILLINOIS	FED. AID PROJECT	

SHEET NO. 9
23 SHEETS

*(105BR)BR
Contract - 68479



PARTIAL PLAN



CROSS SECTION
(Looking East)

MIN. BAR LAP
#5 bars = 2'-2"

Notes:
See Sheet 10 of 23 for superstructure details and Bill of Material.
Bars indicated thus 20 x 3-#5 etc. indicates 20 lines of bars with 3 lengths per line.
See Sheet 10 of 23 for parapet reinforcement.
See Sheet 12 of 23 for Section A-A.
See Sheet 10 of 23 for Section B-B.
See Sheet 19 of 23 for bar splicer details.

DESIGNED CEH
CHECKED CWC
DRAWN DLH
CHECKED CEH / CWC

WHKS & CO.
ENGINEERS PLANNERS LAND SURVEYORS
MASON CITY, IOWA DUBUQUE, IOWA AMES, IOWA
E. DUBUQUE, ILLINOIS SPRINGFIELD, ILLINOIS ROCHESTER, MINNESOTA

SUPERSTRUCTURE
IL ROUTE 17 OVER SENACHWINE CREEK
FAP ROUTE 645 - SECTION (105BR)BR
MARSHALL COUNTY
STATION 334+90.00
STRUCTURE NO. 062-0072