

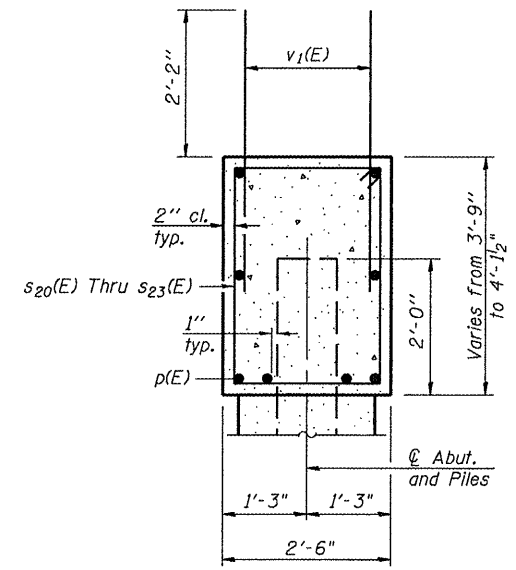
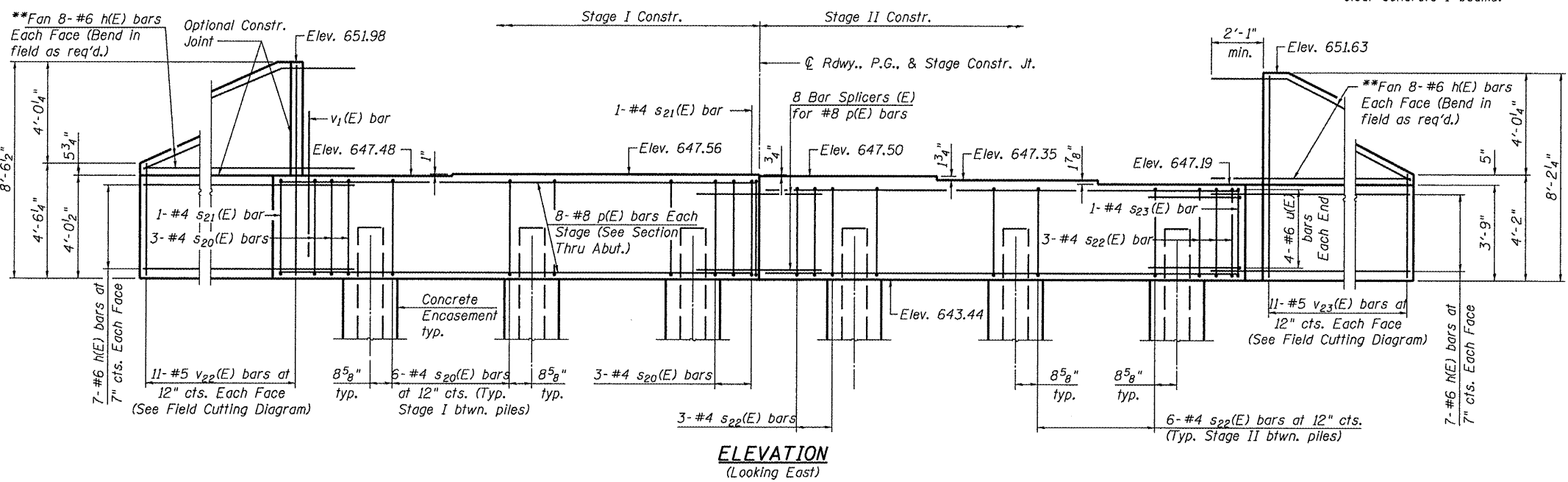
STATE OF ILLINOIS
DEPARTMENT OF TRANSPORTATION

ROUTE NO.	SECTION	COUNTY	SHEET	SHEET NO.
F.A.P. 645	*	Marshall	71 35	17 23 SHEETS
FED. ROAD DIST. NO. 4		ILLINOIS FED. AID PROJECT		

Contract - 68479

Note:
Pour steps monolithically with cap.

** Cut h(E) bars in field as required to clear concrete I-beams.



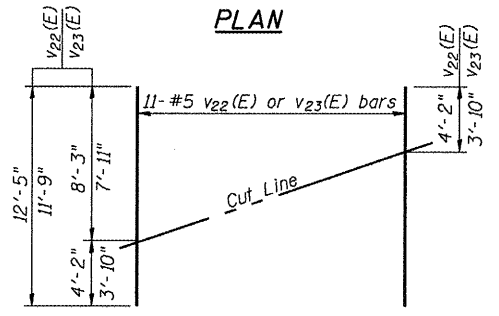
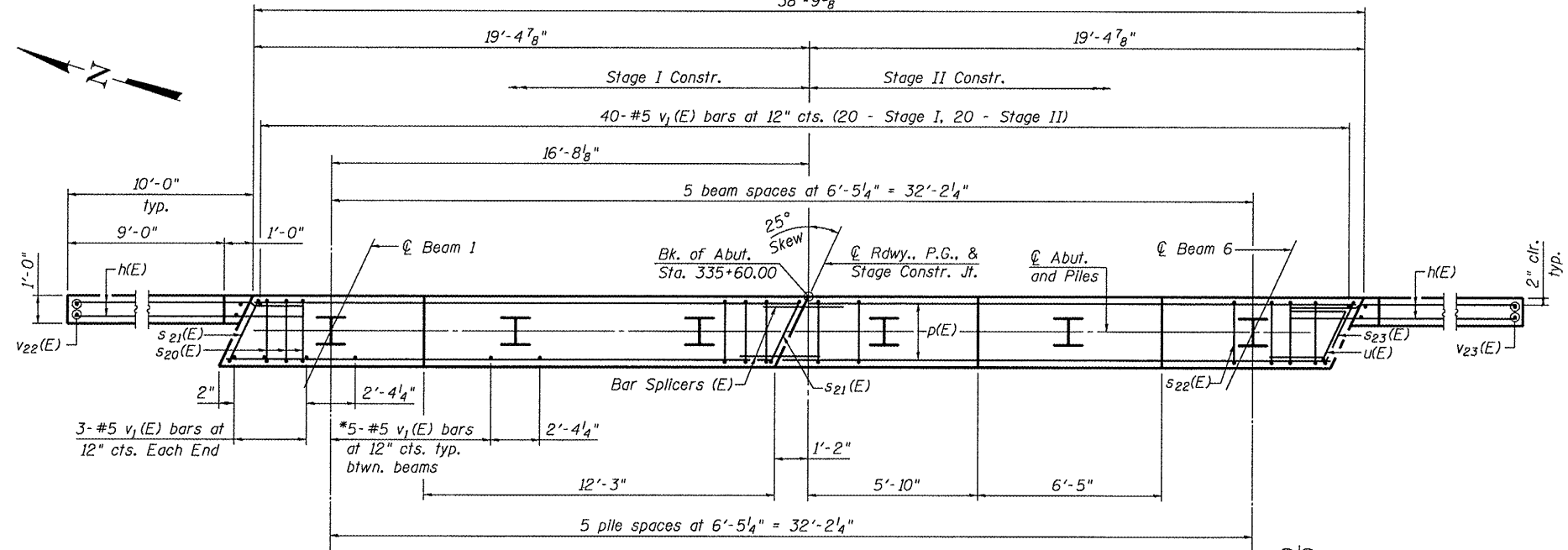
SEC. THRU ABUT.

BILL OF MATERIAL

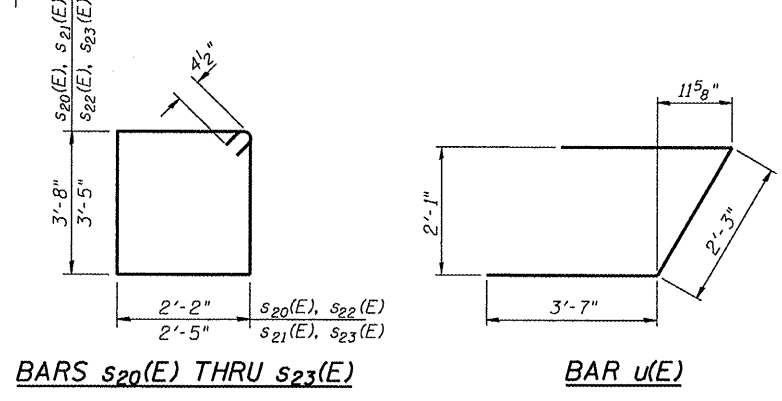
Bar	No.	Size	Length	Shape
h(E)	60	#6	13'-0"	—
p(E)	16	#8	19'-1"	—
s20(E)	18	#4	12'-5"	□
s21(E)	2	#4	12'-11"	□
s22(E)	18	#4	11'-11"	□
s23(E)	1	#4	12'-5"	□
u(E)	8	#6	9'-5"	┘
v1(E)	71	#5	4'-4"	—
v22(E)	11	#5	12'-5"	—
v23(E)	11	#5	11'-9"	—
Structure Excavation		Cu. Yd.	147	
Concrete Structures		Cu. Yd.	19.1	
Reinforcement Bars, Epoxy Coated		Pound	3,020	
Furnishing Steel		Foot	110	
Piles HP 12 x 53		Foot	110	
Test Pile Steel HP 12 x 53		Each	1	
Driving Piles		Foot	110	
Concrete Encasement		Cu. Yd.	2.1	

For details of Bar Splicers, see sheet 19 of 23.
For details of piles and Concrete Encasement, see sheet 20 of 23.

EAST ABUTMENT
IL ROUTE 17 OVER SENACHWINE CREEK
FAP ROUTE 645 - SECTION (105BR)BR
MARSHALL COUNTY
STATION 334+90.00
STRUCTURE NO. 062-0072



Order v22(E) and v23(E) full length. Cut as shown and use remainder of bars in opposite face.



Operator: dtheberling Date: 8/26/2008 Filename: L:\Jobs\DOT BBS\68479\BBS\68479\BBS\68479\03\CADD_Struct\062-0072_4-18-08.dgn

PILE DATA
Type: Steel HP 12 x 53
Nominal Required Bearing: 419k
Factored Resistance Available: 210k
Est. Length: 22 ft.
No. Production Piles: 5
No. Test Piles: 1

* Between beam 3 and 4, provide 3 - v1(E) bars in Stage I and 2 - v1(E) bars in Stage II.

DESIGNED	CEH
CHECKED	CWC
DRAWN	DLH
CHECKED	CEH / CWC

WHKS & CO.

ENGINEERS PLANNERS LAND SURVEYORS

MASON CITY, IOWA DUBUQUE, IOWA AMES, IOWA
E. DUBUQUE, ILLINOIS SPRINGFIELD, ILLINOIS ROCHESTER, MINNESOTA