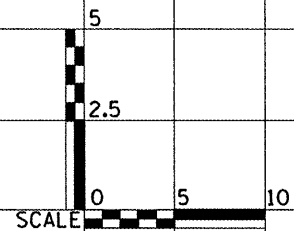
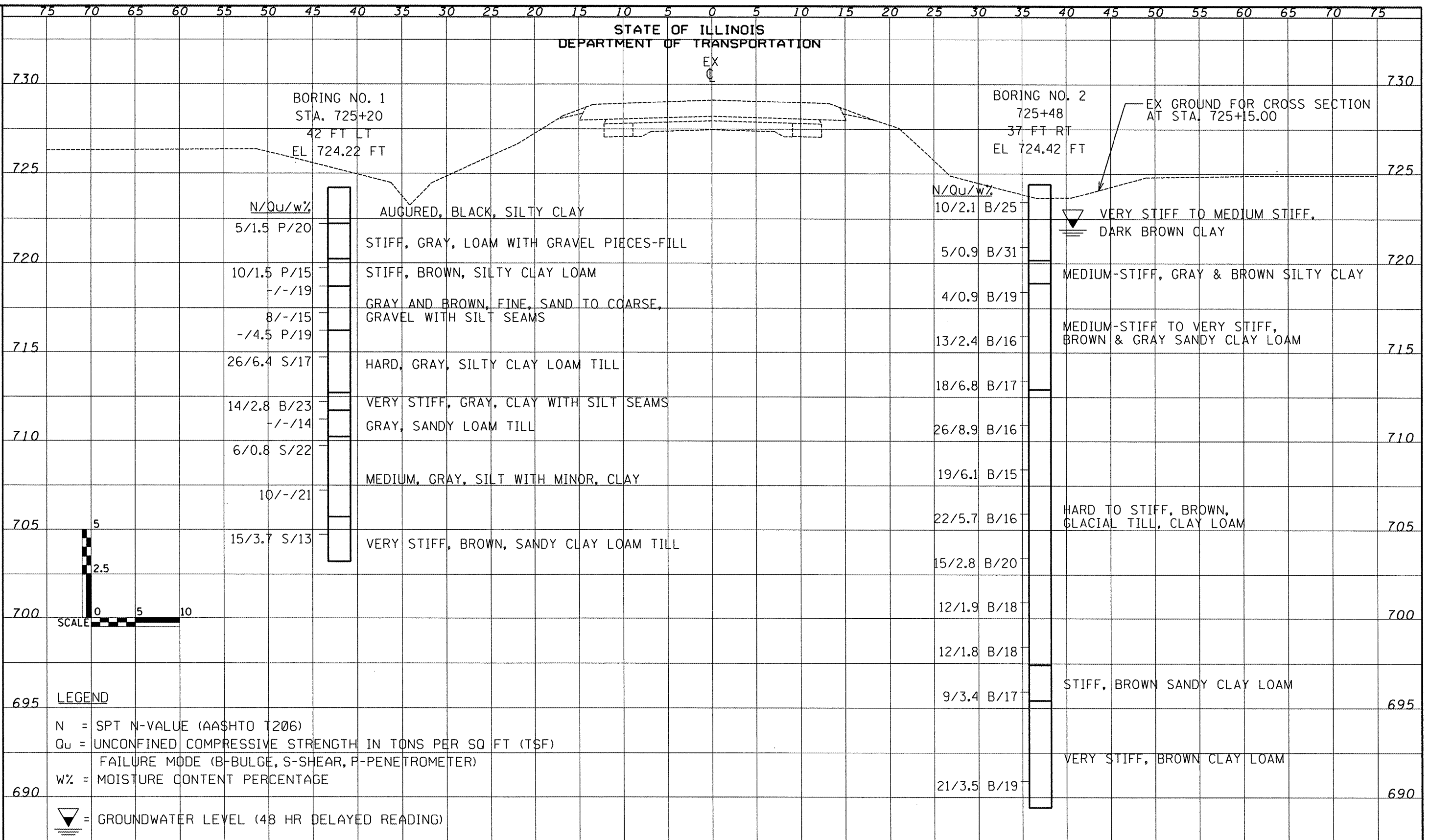


STATE OF ILLINOIS  
DEPARTMENT OF TRANSPORTATION

EX  
C

ELEVATION



DESIGNED	HZS
CHECKED	-
DRAWN	HZS
CHECKED	-

EXAMINED	200
PASSED	ENGINEER OF BRIDGE DESIGN
	ENGINEER OF BRIDGES AND STRUCTURES

SUBSURFACE DATA PROFILE  
STRUCTURE NO. 102-2028

SHEET NO. 2A	F.A.S. RTE.	SECTION	COUNTY	TOTAL SHEETS	SHEET NO.
SHEETS 2	1360	631	WOODFORD	31	16A
		SN 102-2028	CONTRACT NO. 68574		
		FED. ROAD DIST. NO.	ILLINOIS FED. AID PROJECT		

⚠ SHEET ADDED 10/23/08