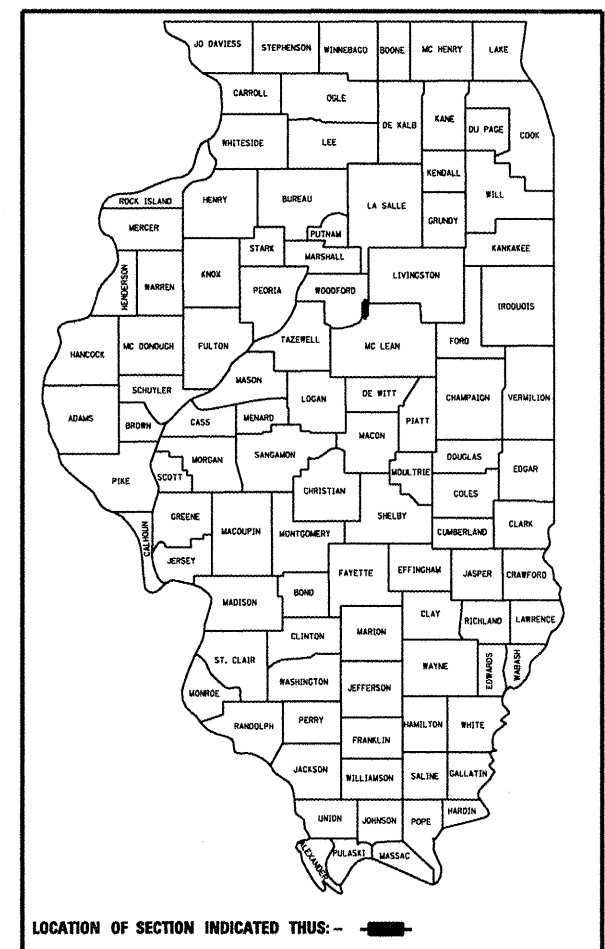


F.A.S. RTE.	SECTION	COUNTY	TOTAL SHEETS	SHEET NO.
1360	631	WOODFORD	31	1

D-94-041-06



STATE OF ILLINOIS  
DEPARTMENT OF TRANSPORTATION  
DIVISION OF HIGHWAYS

# PROPOSED HIGHWAY PLANS

F.A.S. ROUTE 1360 (IL 251)  
SECTION 631  
PROJECT ACRS-1360(105)  
WOODFORD COUNTY  
C-94-048-06

### INDEX OF SHEETS

1. COVER SHEET
- 2.-3. COMMITMENTS, STATUS OF UTILITIES, GENERAL NOTES, JOB SPECIFIC NOTES
- 4.-5. SUMMARY OF QUANTITIES
- 6.-7. TYPICAL SECTIONS
- 8.-10. SCHEDULE OF QUANTITIES
11. BENCHMARKS & RECOVERY TIES
12. IL 251 ROADWAY PLAN & PROFILE
13. TRAFFIC CONTROL DETOUR PLAN
14. EROSION CONTROL /LANDSCAPE PLAN
- 15.-16. STRUCTURE PLANS
17. UNSUITABLE EXCAVATION TREATMENT DETAIL FOR BOX CULVERT
- 18.-19. DETAIL OF EXCAVATION AND BACKFILL FOR BOX CULVERT
20. BUTT JOINT AND HMA BINDER COURSE TAPER DETAIL
21. FIELD TILE JUNCTION VAUL DETAIL
- 22.-27. DISTRICT STANDARDS
- 28.-31. CROSS SECTIONS  
HIGHWAY STANDARDS

### HIGHWAY STANDARDS

- 280001-04 604001-02 701901
- 482011-03 667101 780001-01
- 515001-02 701301-02 781001-02
- 602601-01 701311-02 BLR 21-7

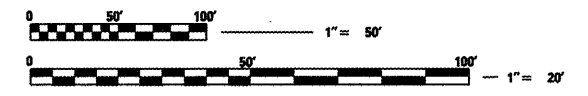
### DISTRICT STANDARDS

- 205001 - D4 667101 - D4
- 280001 - D4 780001 - D4
- 440001 - D4

### DESIGN DESIGNATION

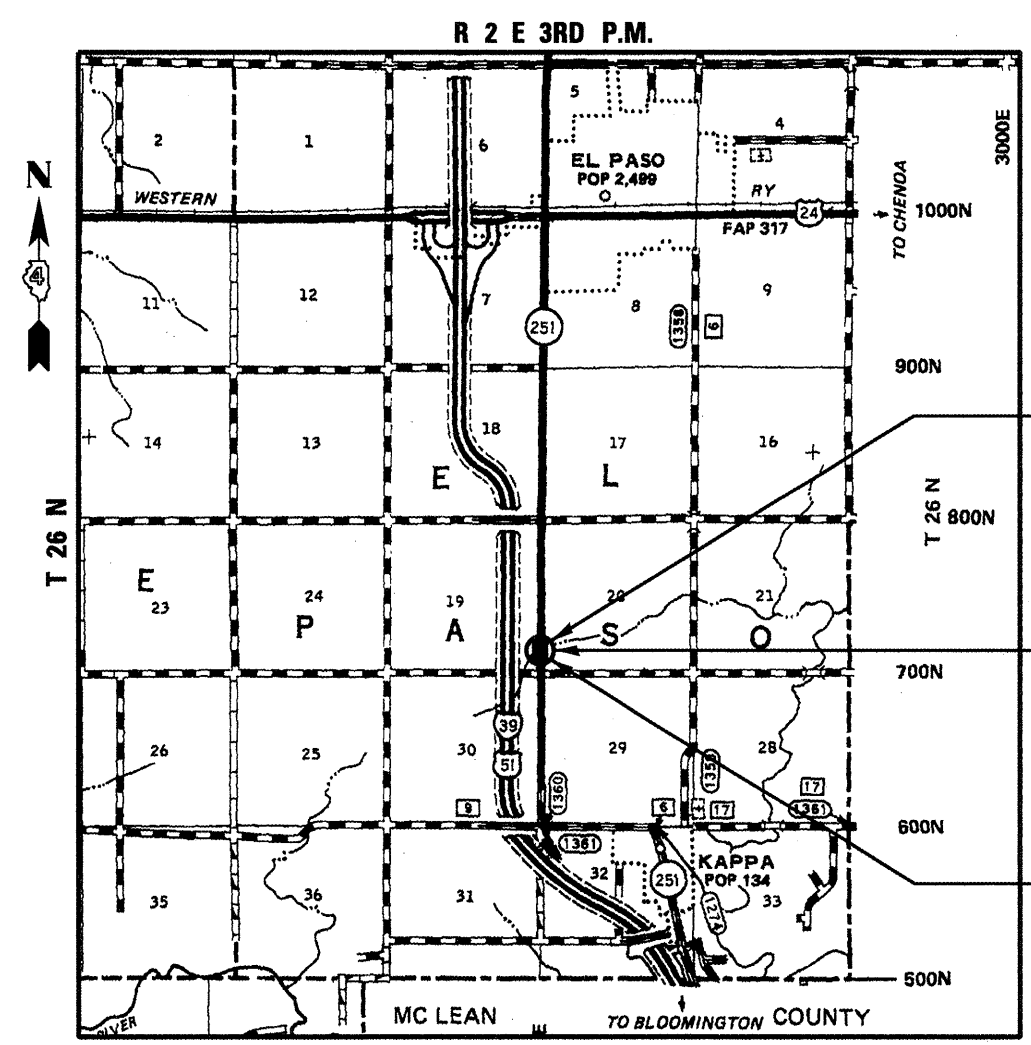
- MAJOR COLLECTOR (NON-URBAN)
- ADT = 1,050 (2005)
- MU = 2.0% (2005)
- SU = 4.0% (2005)

### SCALES



FULL SIZE PLANS HAVE BEEN PREPARED USING STANDARD ENGINEERING SCALES. REDUCED SIZED PLANS WILL NOT CONFORM TO STANDARD SCALES. IN MAKING MEASUREMENTS ON REDUCED PLANS, THE ABOVE SCALES MAY BE USED.

J.U.L.I.E.  
JOINT UTILITY LOCATION INFORMATION FOR EXCAVATION  
1-800-892-0123



THIS WORK CONSISTS OF REMOVAL AND REPLACEMENT OF BOX CULVERT CARRYING IL 251 OVER UNNAMED DRAINAGE DITCH (S.N. 102-2002 (EXISTING); S.N. 102-2028 (NEW)), 2.8 MILES SOUTH OF US 24 AT EL PASO & OTHER COLLATERAL WORK.

PROPOSED PROJECT ENDS  
STATION 727+05.00

PROPOSED SECTION 631; S. N. 102-2028 WHICH CARRIES IL 251 OVER UNNAMED DRAINAGE DITCH; DOUBLE 8' X 4' REINFORCED CONCRETE BOX CULVERT; 69'-3 1/2" BK.-BK. HEADWALLS; SKEW = 30° RIGHT FORWARD  
STATION 725+15.00

PROPOSED PROJECT BEGINS  
STATION 723+25.00

SCALE : [Graphic] = 1 MILE  
GROSS LENGTH = NET LENGTH = 380 FT. = 0.07 MILES

PROJECT ENGINEER: M. ADDIS (309) 671-3454

DESIGNER: M. MOHAMED (309) 671-3462

STATE OF ILLINOIS  
DEPARTMENT OF TRANSPORTATION  
DIVISION OF HIGHWAYS

SUBMITTED *Aug 14 20 08*  
*[Signature]*  
DEPUTY DIRECTOR OF HIGHWAYS, REGION ENGINEER

*October 3, 20 08*  
*[Signature]*  
ENGINEER OF DESIGN AND ENVIRONMENT

*October 3, 20 08*  
*[Signature]*  
DIRECTOR OF HIGHWAYS, CHIEF ENGINEER

PRINTED BY THE AUTHORITY  
OF THE STATE OF ILLINOIS

CONTRACT NO. 68574

CATALOG NO. 033202-00D