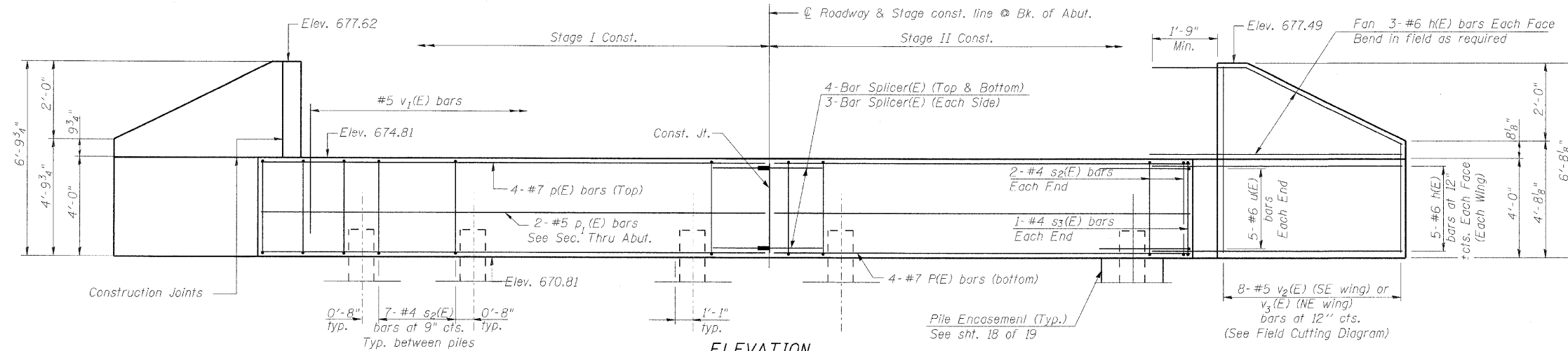


STATE OF ILLINOIS  
DEPARTMENT OF TRANSPORTATION

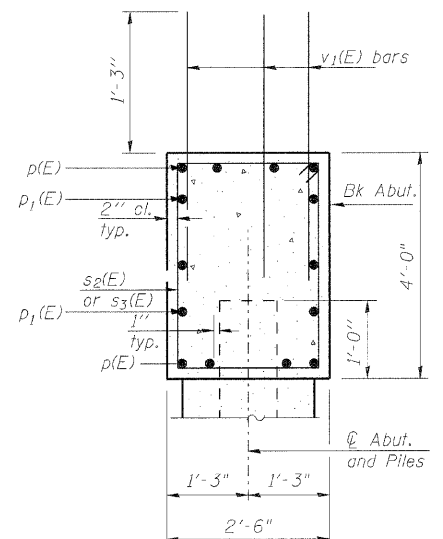
ROUTE NO.	SECTION	COUNTY	TOTAL SHEETS	SHEET NO.	SHEET NO. 14
F.A.P. 698	126BR	WOODFORD	56	29	19 SHEETS
FED. ROAD DIST. NO. 7	ILLINOIS	FED. AID PROJECT			

Contract # 68576

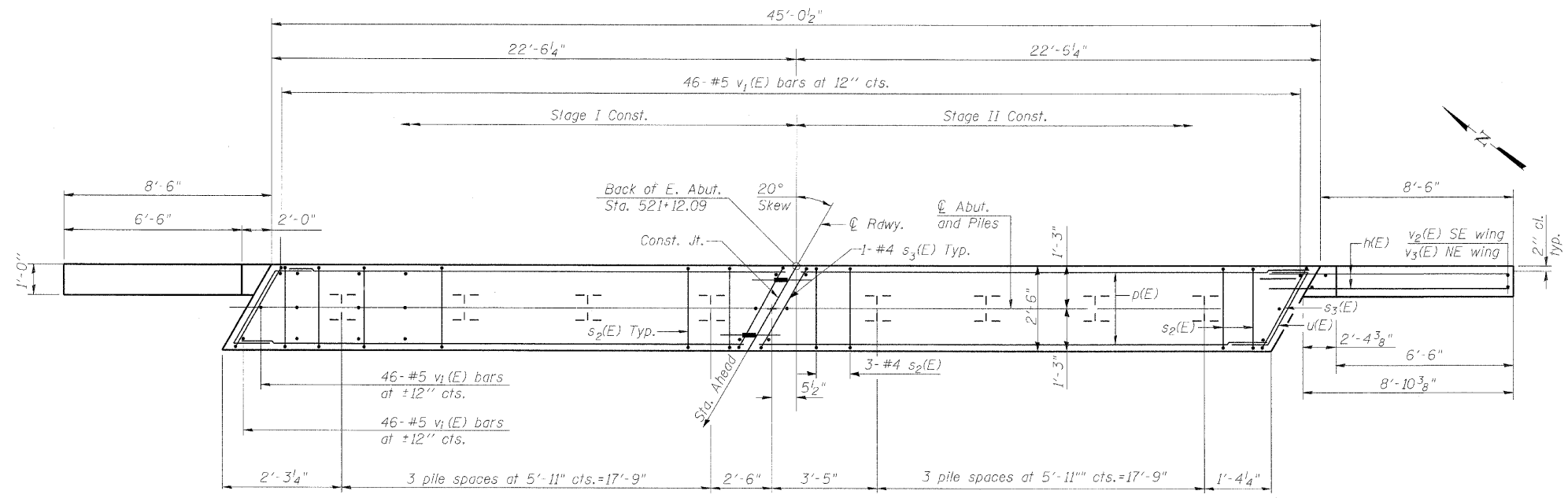


**ELEVATION**  
(Looking East)

NOTES:  
Cost of welded wire fabric in pile encasement is included in the item "concrete encasement"



**SEC. THRU ABUT.**



**PLAN**

**BILL OF MATERIAL**

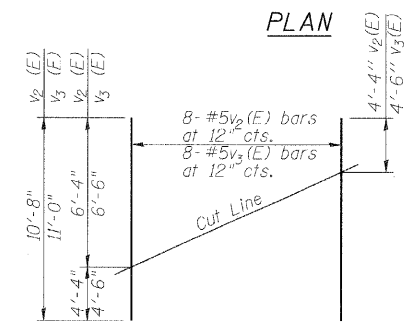
Bar	No.	Size	Length	Shape
h(E)	32	#6	10'-6"	—
p(E)	16	#7	22'-2"	—
p1(E)	12	#5	22'-2"	—
s2(E)	50	#4	12'-5"	□
s3(E)	4	#4	12'-9"	□
u(E)	10	#6	7'-9"	┘
v1(E)	138	#5	3'-3"	—
v2(E)	8	#5	10'-8"	—
v3(E)	8	#5	11'-0"	—
Structure Excavation		Cu. Yd.	55.0	
Concrete Structures		Cu. Yd.	20.5	
Reinforcement Bars, Epoxy Coated		Pound	2730	
Furnishing Steel Piles HPI2x6.3		Foot	360	
Driving Piles		Foot	360	△
Concrete Encasement		Cu. Yd.	2.7	

**PILE DATA**

Type & Size: Steel-HP 12x63  
Nominal Required Bearing: 210 Kips  
Allowable Resistance Available = 70 Kips  
Estimated Pile length = 45'  
No. of production piles = 8

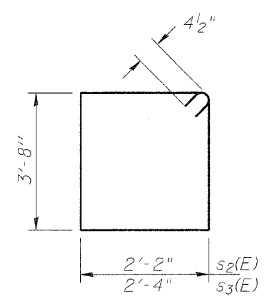
DESIGNED	KRG
CHECKED	MJK
DRAWN	GSJ
CHECKED	MJK

AI-R

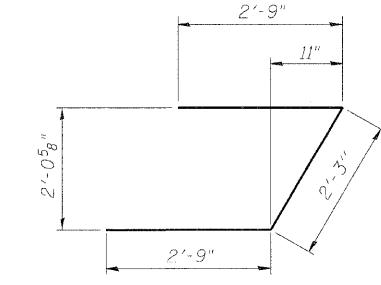


**FIELD CUTTING DIAGRAM**

Order v2(E) and v3(E) full length. Cut as shown and use remainder of bars in opposite face.



**BARS s2(E) & s3(E)**



**BAR u(E)**

MID-AMERICA ENGINEERING SERVICES

**EAST ABUTMENT**  
IL. ROUTE 89 OVER SNAG CREEK  
F.A.P. ROUTE 698 SEC. 126BR  
WOODFORD COUNTY  
STATION 521+52.42  
STRUCTURE NO. 102-0082

△ REVISED 10/14/08