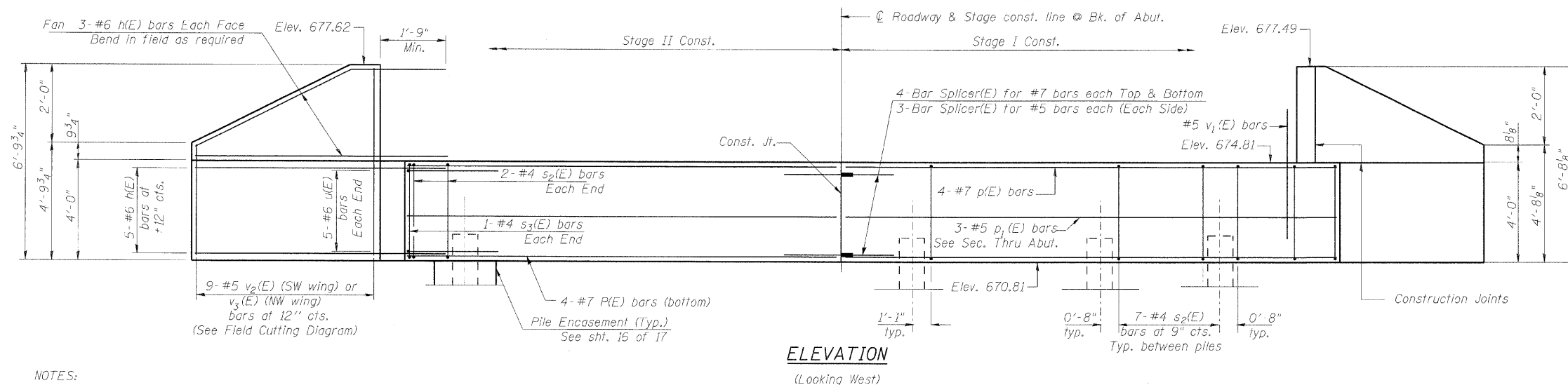


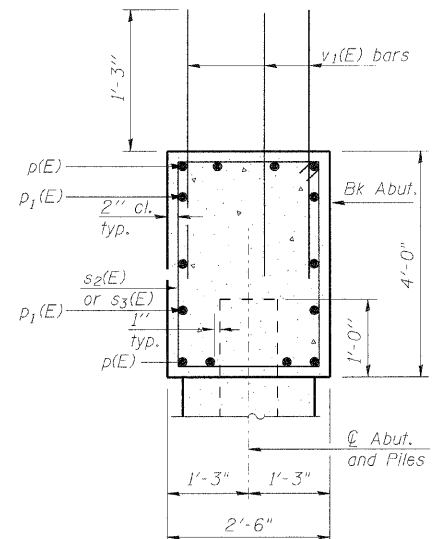
STATE OF ILLINOIS
DEPARTMENT OF TRANSPORTATION

| | | | | | |
|-----------------------|---------|------------------|--------------|-----------|--------------|
| ROUTE NO. | SECTION | COUNTY | TOTAL SHEETS | SHEET NO. | SHEET NO. 15 |
| F.A.P. 698 | 126BR | WOODFORD | 56 | 30 | 19 SHEETS |
| FED. ROAD DIST. NO. 7 | F.LINER | FED. AID PROJECT | | | |

Contract # 68576

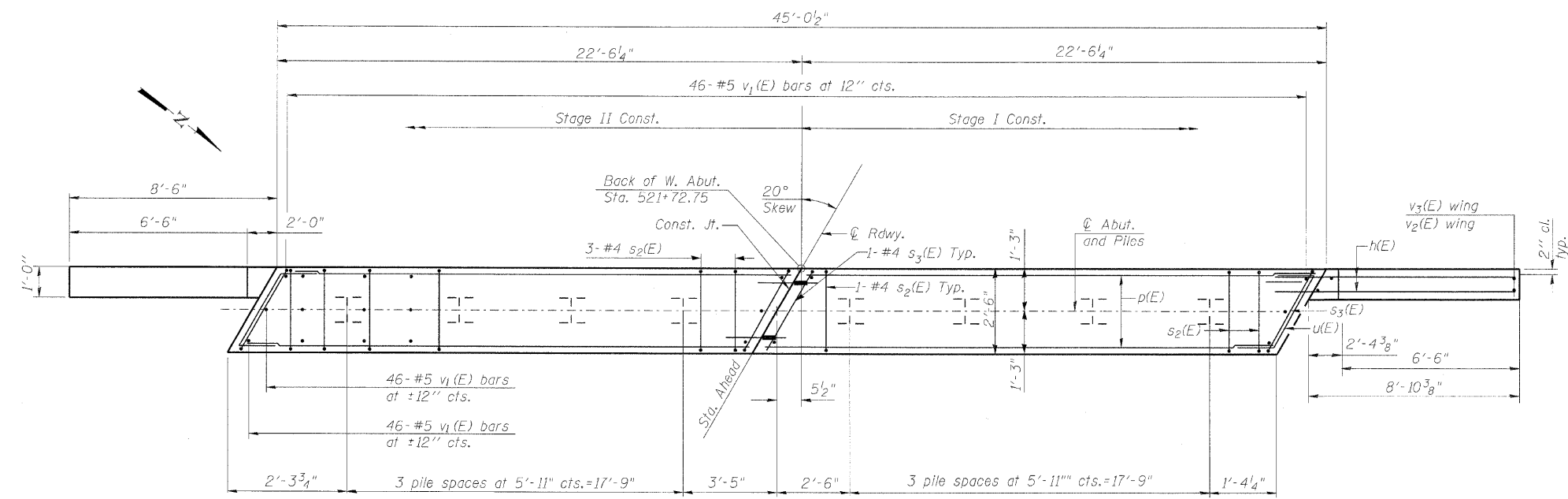


ELEVATION
(Looking West)



SEC. THRU ABUT.

NOTES:
Cost of welded wire fabric in pile encasement is included in the item "concrete encasement"



PLAN

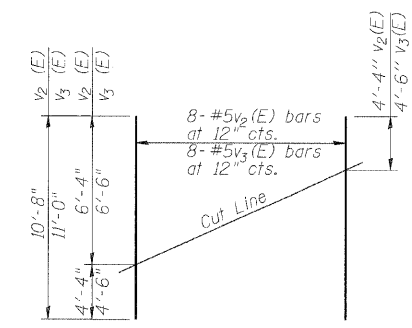
BILL OF MATERIAL

| Bar | No. | Size | Length | Shape |
|----------------------------------|---------|------|--------|-------|
| h(E) | 32 | #6 | 10'-6" | — |
| p(E) | 16 | #7 | 22'-2" | — |
| p1(E) | 12 | #5 | 22'-2" | — |
| s2(E) | 50 | #4 | 12'-5" | □ |
| s3(E) | 4 | #4 | 12'-9" | □ |
| u(E) | 10 | #6 | 7'-9" | ┘ |
| v1(E) | 138 | #5 | 3'-3" | — |
| v2(E) | 8 | #5 | 10'-8" | — |
| v3(E) | 8 | #5 | 11'-0" | — |
| Structure Excavation | Cu. Yd. | 55.0 | | |
| Concrete Structures | Cu. Yd. | 20.5 | | |
| Reinforcement Bars, Epoxy Coated | Pound | 2730 | | |
| Furnishing Steel Piles HPI2x63 | Foot | 315 | | |
| Driving Piles | Foot | 315 | | |
| Test Pile, HPI2x63 | Each | 1 | | |
| Concrete Encasement | Cu. Yd. | 2.7 | | |

PILE DATA

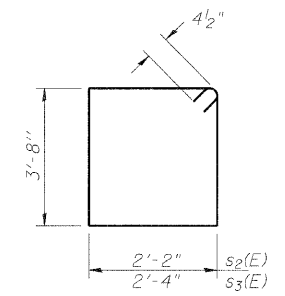
Type & Size: Steel-HP 12x63
Nominal Required Bearing: 210 Kips
Allowable Resistance Available = 70 Kips
Estimated Pile length = 45'
No. of production piles = 7
No. of Test Piles = 1

| | |
|----------|-----|
| DESIGNED | KRG |
| CHECKED | MJK |
| DRAWN | GSJ |
| CHECKED | MJK |

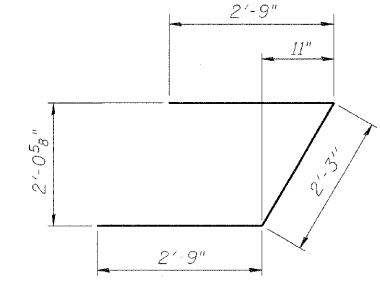


FIELD CUTTING DIAGRAM

Order v2(E) and v3(E) full length. Cut as shown and use remainder of bars in opposite face.



BARS s2(E) & s3(E)



BAR u(E)

WEST ABUTMENT
IL. ROUTE 89 OVER
SNAG CREEK
F.A.P. ROUTE 698 SEC. 126BR
WOODFORD COUNTY
STATION 521+52.42
STRUCTURE NO. 102-0082

MID-AMERICA ENGINEERING SERVICES

REVIS 10/14/08