

**GENERAL NOTES**

Except as otherwise specified fasteners shall be AASHTO M 164 Type 1, mechanically galvanized bolts. Bolts 7/8 in.  $\phi$ , holes 15/16 in.  $\phi$ , unless otherwise noted.

Calculated weight of Structural Steel = 263,400 pounds.  
No field welding is permitted except as specified in the contract documents.  
Reinforcement bars shall conform to the requirements of ASTM A 706 Gr 60 (IL Modified). See Special Provisions

Reinforcement bars designated (E) shall be epoxy coated.  
Bearing seat surfaces shall be constructed or adjusted to their designated elevations within a tolerance of 1/8 inch (0.01 ft.). Adjustment shall be made either by grinding the surface or by shimming the bearings.

Concrete Sealer shall be applied to the designated areas of the North & South Abutments.

The Inorganic Zinc Rich Primer / Acrylic / Acrylic Paint System shall be used for shop and field painting of new structural steel except where otherwise noted. The color of the final finish coat for all interior steel surfaces shall be gray, Munsell No. 5B 7/1. The color of the final finish coat for the exterior and bottom flange of the fascia beams shall be Interstate Green, Munsell No. 7.5 G7/8. See Special Provision for "Cleaning and Painting New Metal Structures".

Layout of slope protection system may be varied in the field to suit ground conditions as directed by the Engineer.

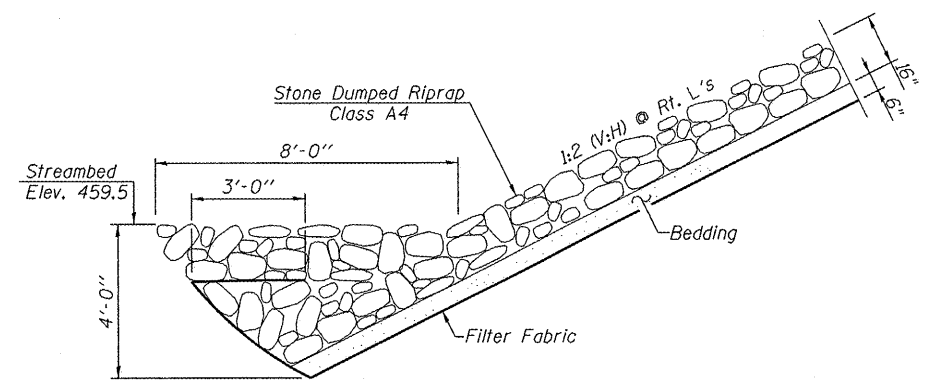
The Contractor shall drive test piles to 110% of the nominal required bearing specified in production locations of substructures specified or approved by the Engineer before ordering the remainder of piles.

The existing structural steel coating contains lead. The Contractor shall take appropriate precautions to deal with the presence of lead on this project.

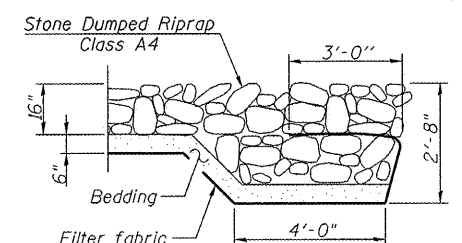
Slipforming of the parapets is not allowed.  
If the Contractor elects to use cantilever forming brackets on the exterior beams or girders, the brackets shall be placed at the same locations as required for the hardwood blocks in Article 503.06(b) of the Standard Specifications. If additional cantilever forming brackets are required, hardwood blocking shall be wedged between the exterior and first interior beam at each of these additional bracket locations.

ROUTE NO.	SECTION	COUNTY	TOTAL SHEETS	SHEET NO.	SHEET NO. 2
F.A.S. 2370 (IL 26)	1-BR	PUTNAM	65	19	31 SHEETS
FED. ROAD DIST. NO. 7	ILLINOIS	FED. AID PROJECT			

Contract # 68577



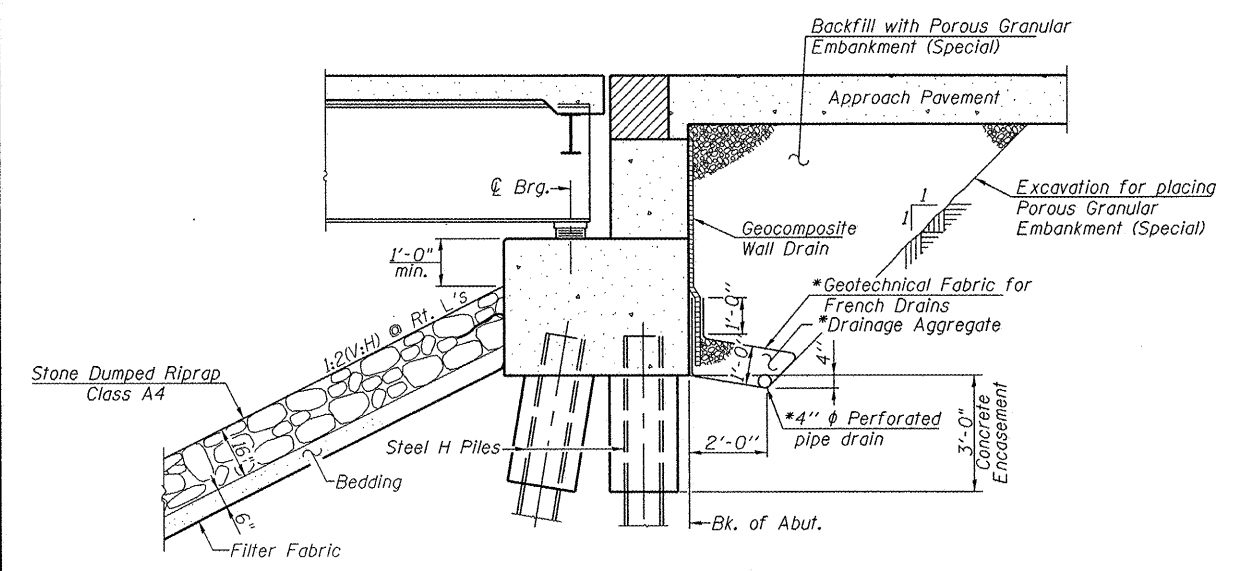
**TOE STONE RIPRAP TREATMENT**



**FLANK STONE RIPRAP TREATMENT**

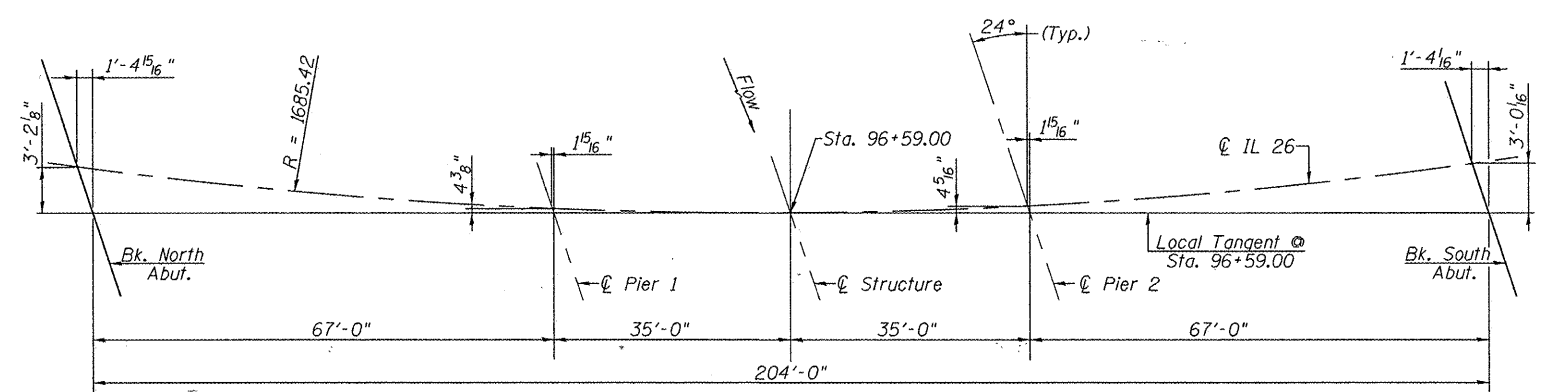
**TOTAL BILL OF MATERIAL**

ITEM	UNIT	SUPER	SUB	TOTAL
Porous Granular Embankment (Special)	Cu. Yd.		107	107
Stone Dumped Riprap, Class A4	Ton		544	544
Filter Fabric	Sq. Yd.		820	820
Removal of Existing Structures	Each		1	1
Structure Excavation	Cu. Yd.		218	218
Concrete Structures	Cu. Yd.		218.8	218.8
Concrete Superstructure	Cu. Yd.	268.4		268.4
Bridge Deck Grooving	Sq. Yd.	794		794
Concrete Encasement	Cu. Yd.		15.2	15.2
Protective Coat	Sq. Yd.	1026		1026
Furnishing and Erecting Structural Steel	L. Sum	1		1
Stud Shear Connectors	Each	4410		4410
Reinforcement Bars, Epoxy Coated	Pound	63100	17360	80460
Bar Splicers	Each	582	178	760
Furnishing Steel Piles HP 12 x 63	Foot		1494	1494
Furnishing Steel Piles HP 12 x 53	Foot		2049	2049
Driving Piles	Foot		3543	3543
Test Pile Steel HP 12 x 53	Each		1	1
Temporary Sheet Piling	Sq. Ft.		2105	2105
Name Plates	Each	1		1
Preformed Joint Strip Seal	Foot	88		88
Elastomeric Bearing Assembly, Type I	Each	14		14
Anchor Bolts, 1/4"	Each	56		56
Concrete Sealer	Sq. Ft.		950	950
Geocomposite Wall Drain	Sq. Yd.		59	59
Pipe Underdrains for Structures 4"	Foot		99	99
Drainage Scupper, DS-II	Each	1		1
Underwater Structure Excavation Protection - Location 1	Each		1	1
Underwater Structure Excavation Protection - Location 2	Each		1	1
Permanent Survey Marker, Type I	Each	1		1



**SECTION THRU PILE SUPPORTED STUB ABUTMENT**  
(Horiz. dim. @ Rt. L's)

\* Included in the cost of Pipe Underdrains for Structures.  
Notes:  
All drainage system components shall extend 2'-0" from the end of each wingwall except an outlet pipe shall extend until intersecting with the side slopes. The pipes shall drain into concrete headwalls. (See Article 601.05 of the Standard Specifications and Highway Standard 601101).



**OFFSET SKETCH**

**GENERAL NOTES AND  
BILL OF MATERIAL  
ILLINOIS ROUTE 26 OVER  
COFFEE CREEK  
F.A.S. ROUTE 2370  
SECTION 1-BR  
PUTNAM COUNTY  
STA. 96+59.00  
STRUCTURE NO. 078-0046**