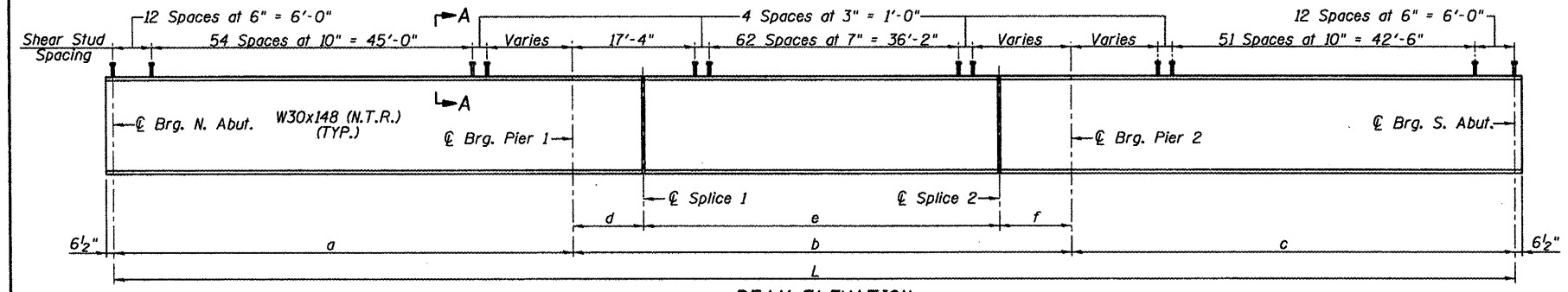
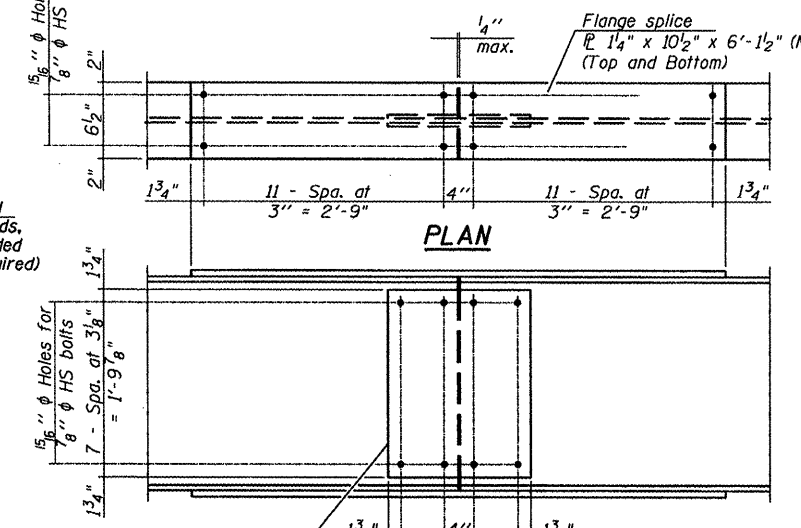


FRAMING PLAN

Notes: All beams, diaphragms, connection plates, bent plates and splice plate material shall be AASHTO M 270 Grade 50 (NTR). Beams W30x148 shall be fabricated to their respective radii.
 All diaphragms between beams shall be installed with erection pins and bolts in accordance with the erection plan approved by the Engineer. Individual diaphragms at supports may be temporarily disconnected to install bearing anchor rods.
 Load carrying components designated "NTR" shall conform to the Supplemental Requirements for Notch Toughness, Zone 2.



BEAM ELEVATION
(Dimensions measured along Centerline of Beam)



SPlice DETAIL
(14 Required)

LAYOUT DIMENSIONS

BEAM	C Brg. N. Abut.		C Brg. Pier 1		C Splice 1		C Splice 2		C Brg. Pier 2		C Brg. S. Abut.	
	X	Y	X	Y	X	Y	X	Y	X	Y	X	Y
1	-109'-2 5/8"	24'-0"	-44'-4 1/4"	21'-0 1/16"	-34'-4 1/4"	20'-9 3/4"	15'-9 7/8"	20'-5 7/8"	25'-9 7/8"	20'-7 3/8"	88'-4 3/4"	22'-9 3/16"
2	-106'-6 1/2"	17'-11 5/16"	-41'-8 1/16"	15'-1 1/4"	-31'-8 3/4"	14'-10 9/8"	18'-4 13/16"	14'-9 7/8"	14'-9 7/8"	14'-9 7/8"	90'-11 1/4"	17'-0 1/16"
3	-103'-10 3/8"	11'-11 5/16"	-39'-1 3/16"	9'-2 1/16"	-29'-1 3/16"	9'-0"	20'-11 3/4"	8'-10 9/16"	30'-10 1/16"	9'-0 1/16"	93'-5 1/16"	11'-4 5/16"
4	-101'-2 1/4"	5'-11 9/16"	-36'-5 1/16"	3'-3 3/4"	-26'-5 1/16"	3'-1 1/2"	23'-6 5/8"	3'-1"	33'-6 5/8"	3'-3"	96'-0 1/16"	5'-7 7/8"
5	-98'-6 3/16"	-0'-0 1/2"	-33'-10 9/16"	-2'-6 5/16"	-23'-10 1/4"	-2'-9"	26'-1 1/2"	-2'-8 9/16"	36'-1 1/2"	-2'-6 3/8"	98'-6 5/8"	-0'-0 1/16"
6	-95'-10 1/8"	-6'-0 1/16"	-31'-2 13/16"	-8'-5 9/16"	-21'-2 13/16"	-8'-7 3/8"	28'-8 7/8"	-8'-6 1/16"	38'-8 7/8"	-8'-3 1/16"	101'-1"	-5'-8 3/4"
7	-93'-2 1/8"	-12'-0 5/16"	-28'-7 3/8"	-14'-4 1/8"	-18'-7 3/8"	-14'-5 3/4"	31'-3 1/4"	-14'-3 9/16"	41'-3 1/4"	-14'-1"	103'-7 1/16"	-11'-5 1/16"

BEAM DIMENSIONS

BEAM 1	RADIUS	a	b	c	d	e	f	L
1	1665.00	64'-11 5/16"	70'-2 3/16"	62'-7 7/16"	10'-0"	50'-2 3/16"	10'-0"	197'-8 5/16"
2	1670.84	64'-10 5/8"	70'-1 3/16"	62'-7"	10'-0"	50'-1 3/16"	10'-0"	197'-7 3/16"
3	1676.67	64'-9 9/16"	70'-1"	62'-6 9/16"	10'-0"	50'-1"	10'-0"	197'-5 1/2"
4	1682.50	64'-9 1/4"	70'-0 3/8"	62'-6 1/8"	10'-0"	50'-0 3/8"	10'-0"	197'-3 3/4"
5	1688.34	64'-8 5/8"	69'-11 1/16"	62'-5 3/4"	10'-0"	49'-11 1/16"	10'-0"	197'-2 3/16"
6	1694.17	64'-7 5/16"	69'-11 1/4"	62'-5 1/16"	10'-0"	49'-11 1/4"	10'-0"	197'-0 1/2"
7	1700.00	64'-7 3/16"	69'-10 1/16"	62'-4 7/8"	10'-0"	49'-10 1/16"	10'-0"	196'-10 1/8"

TOP BEAM ELEVATIONS *

LOCATION	BEAM 1	BEAM 2	BEAM 3	BEAM 4	BEAM 5	BEAM 6	BEAM 7
C Brg. N. Abut.	473.18	473.37	473.57	473.77	473.97	474.17	474.37
C Brg. Pier 1	472.36	472.56	472.76	472.96	473.17	473.37	473.57
C Splice 1	472.23	472.43	472.63	472.84	473.04	473.24	473.45
C Splice 2	471.67	471.87	472.08	472.28	472.49	472.69	472.90
C Brg. Pier 2	471.57	471.77	471.98	472.18	472.39	472.60	472.80
C Brg. S. Abut.	470.95	471.16	471.37	471.58	471.79	472.00	472.21

* For fabrication only

STRUCTURAL STEEL
 ILLINOIS ROUTE 26 OVER
 COFFEE CREEK
 F.A.S. ROUTE 2370
 SECTION I-BR
 PUTNAM COUNTY
 STA. 96+59.00
 STRUCTURE NO. 078-0046