

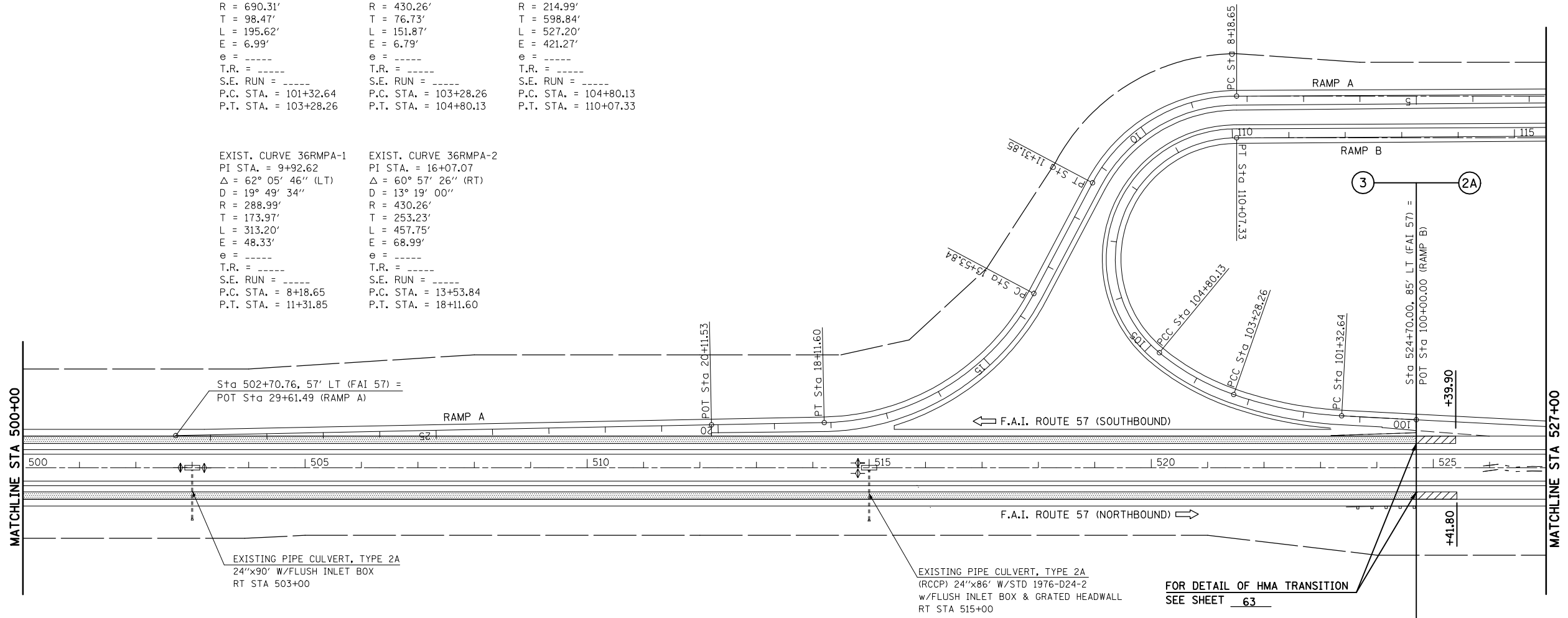
F.A.I. RTE.	SECTION	COUNTY	TOTAL SHEETS	SHEET NO.
57	*	DOUGLAS	76	45
STA. 500+00		TO STA. 527+00		
FED. ROAD DIST. NO.		ILLINOIS	FED. AID PROJECT	
*(15,21-25,21-26,27)RS-1				

EXIST. CURVE 36RMPB-1 PI STA. = 102+31.11 $\Delta = 16^\circ 14' 11''$ (RT) $D = 8^\circ 18' 00''$ $R = 690.31'$ $T = 98.47'$ $L = 195.62'$ $E = 6.99'$ $e = \text{---}$ T.R. = --- S.E. RUN = --- P.C. STA. = 101+32.64 P.T. STA. = 103+28.26	EXIST. CURVE 36RMPB-2 PI STA. = 104+04.99 $\Delta = 20^\circ 13' 26''$ (RT) $D = 13^\circ 19' 00''$ $R = 430.26'$ $T = 76.73'$ $L = 151.87'$ $E = 6.79'$ $e = \text{---}$ T.R. = --- S.E. RUN = --- P.C. STA. = 103+28.26 P.T. STA. = 104+80.13	EXIST. CURVE 36RMPB-3 PI STA. = 110+78.96 $\Delta = 140^\circ 30' 09''$ (RT) $D = 26^\circ 39' 02''$ $R = 214.99'$ $T = 598.84'$ $L = 527.20'$ $E = 421.27'$ $e = \text{---}$ T.R. = --- S.E. RUN = --- P.C. STA. = 104+80.13 P.T. STA. = 110+07.33
--	---	---

EXIST. CURVE 36RMPA-1 PI STA. = 9+92.62 $\Delta = 62^\circ 05' 46''$ (LT) $D = 19^\circ 49' 34''$ $R = 288.99'$ $T = 173.97'$ $L = 313.20'$ $E = 48.33'$ $e = \text{---}$ T.R. = --- S.E. RUN = --- P.C. STA. = 8+18.65 P.T. STA. = 11+31.85	EXIST. CURVE 36RMPA-2 PI STA. = 16+07.07 $\Delta = 60^\circ 57' 26''$ (RT) $D = 13^\circ 19' 00''$ $R = 430.26'$ $T = 253.23'$ $L = 457.75'$ $E = 68.99'$ $e = \text{---}$ T.R. = --- S.E. RUN = --- P.C. STA. = 13+53.84 P.T. STA. = 18+11.60
--	--

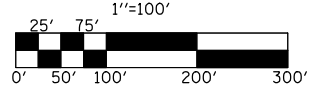


SEC. 2, T. 15 N., R. 8 E., 3RD P.M.



LEGEND	
	HMA SURFACE REMOVAL - 3/4"
	HMA SURFACE REMOVAL - 5"

FOR DETAIL OF HMA TRANSITION SEE SHEET 63



ILLINOIS DEPARTMENT OF TRANSPORTATION
PLAN VIEW
 F.A.I. ROUTE 57
 SECTION (15,21-25,21-26,27)RS-1
 DOUGLAS COUNTY
 SCALE: 1" = 100'
 DATE: 01/19/06
 DRAWN BY: J.P.
 CHECKED BY: K.D.

SEC. 1, T. 15 N., R. 8 E., 3RD P.M.

PLOT DATE = 8/21/2008
 FILE NAME = c:\p\projects\4501305 (v8)\100plans\shs.dgn
 PLOT SCALE = 211.7647 / IN.
 USER NAME = sheehyjm