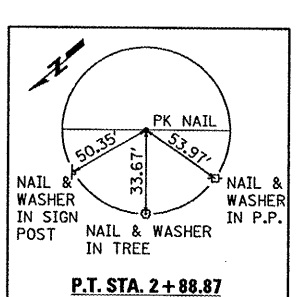
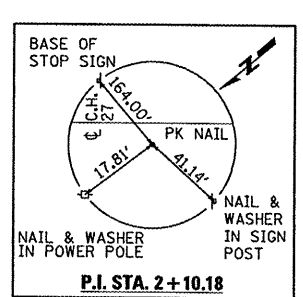
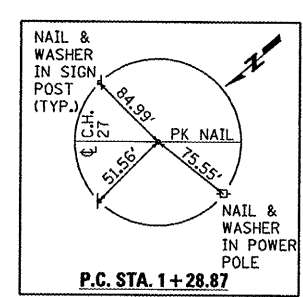
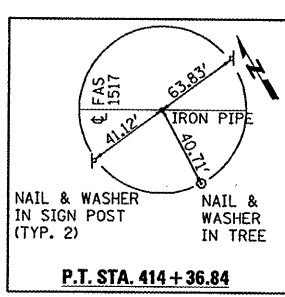
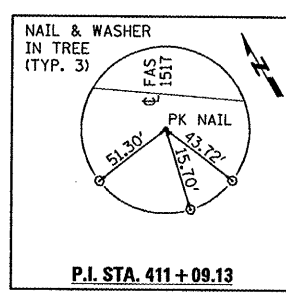
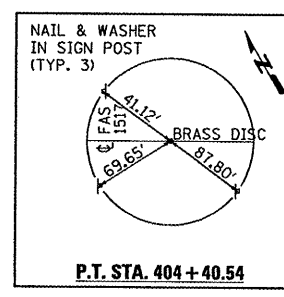


CONTRACT NO. 70517

F.A.U. RTE.	SECTION	COUNTY	TOTAL SHEETS	SHEET NO.
6406	1(BR-2)	MCLEAN	74	14
STA.		TO STA.		
FED. ROAD DIST. NO.		ILLINOIS FED. AID PROJECT		



BM #101 ELEV. 764.42
CHISELED "□" ON S.W. WINGWALL
S.N. 057-0181

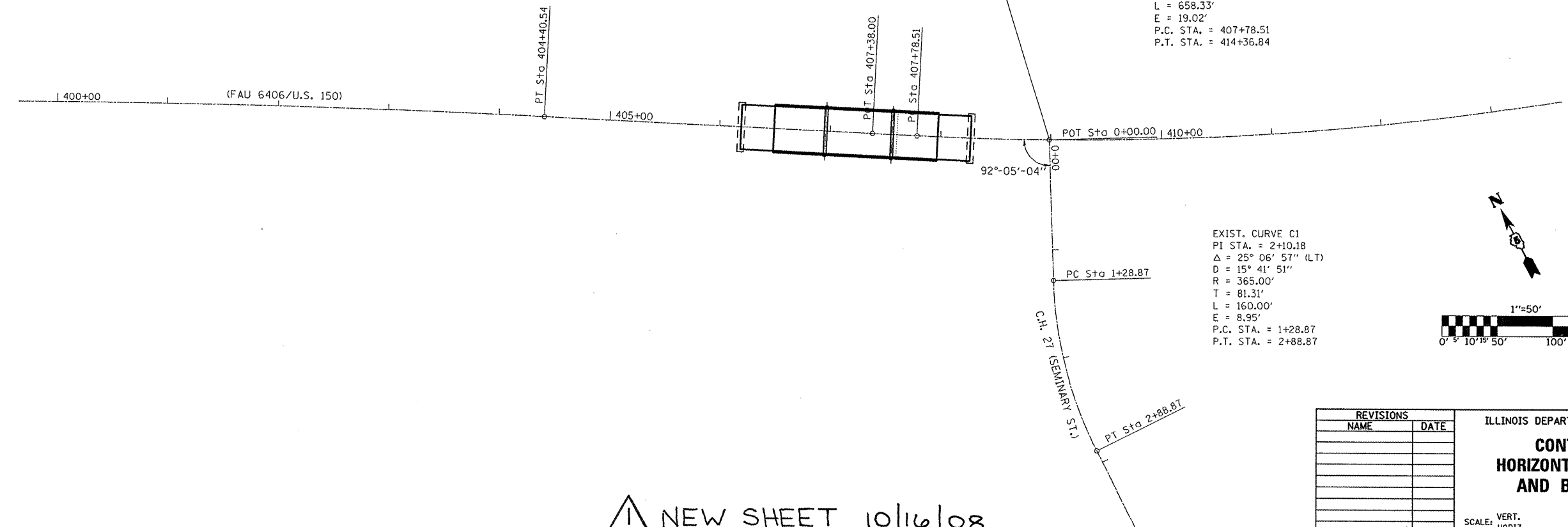
BM #102 ELEV. 765.23
RR SPIKE IN NORTH SIDE OF
POWER POLE LOCATED ON THE
S.W. CORNER OF FAS 1517/US 150
AND C.H. 27

EXIST. CURVE C6
PI STA. = 399+13.08
Δ = 5° 16' 42" (RT)
D = 0° 30' 00"
R = 11,459.16'
T = 528.21'
L = 1,055.67'
E = 12.17'
P.C. STA. = 393+84.87
P.T. STA. = 404+40.54

STATION 408+98.76 FAU 6406 (U.S. 150)
STATION 0+00.00 C.H. 24 (SEMINARY ST.)

EXIST. CURVE C4
PI STA. = 411+09.13
Δ = 13° 10' 07" (LT)
D = 2° 00' 01"
R = 2,864.33'
T = 330.62'
L = 658.33'
E = 19.02'
P.C. STA. = 407+78.51
P.T. STA. = 414+36.84

EXIST. CURVE C1
PI STA. = 2+10.18
Δ = 25° 06' 57" (LT)
D = 15° 41' 51"
R = 365.00'
T = 81.31'
L = 160.00'
E = 8.95'
P.C. STA. = 1+28.87
P.T. STA. = 2+88.87



NEW SHEET 10/16/08

REVISIONS	
NAME	DATE

ILLINOIS DEPARTMENT OF TRANSPORTATION
**CONTROL TIES,
HORIZONTAL ALIGNMENT
AND BENCHMARKS**
SCALE: VERT. DATE
HORIZ. DATE
DRAWN BY
CHECKED BY

PLOT DATE = 8/21/2008
 PLOT SCALE = 1"=50'
 USER NAME = wsl333