

NORTH CURB LINE

Location	Station	Offset	Theoretical Grade Elevations
End W. Appr. Pav't	406+19.75	-20.00	767.40
A	406+29.75	-20.00	767.45
B	406+39.75	-20.00	767.49
Bk. W. Abut.	406+49.75	-20.00	767.54

NORTH EDGE OF PAVEMENT

Location	Station	Offset	Theoretical Grade Elevations
End W. Appr. Pav't	406+19.75	-12.00	767.58
A	406+29.75	-12.00	767.63
B	406+39.75	-12.00	767.67
Bk. W. Abut.	406+49.75	-12.00	767.72

☉ ROADWAY & PG

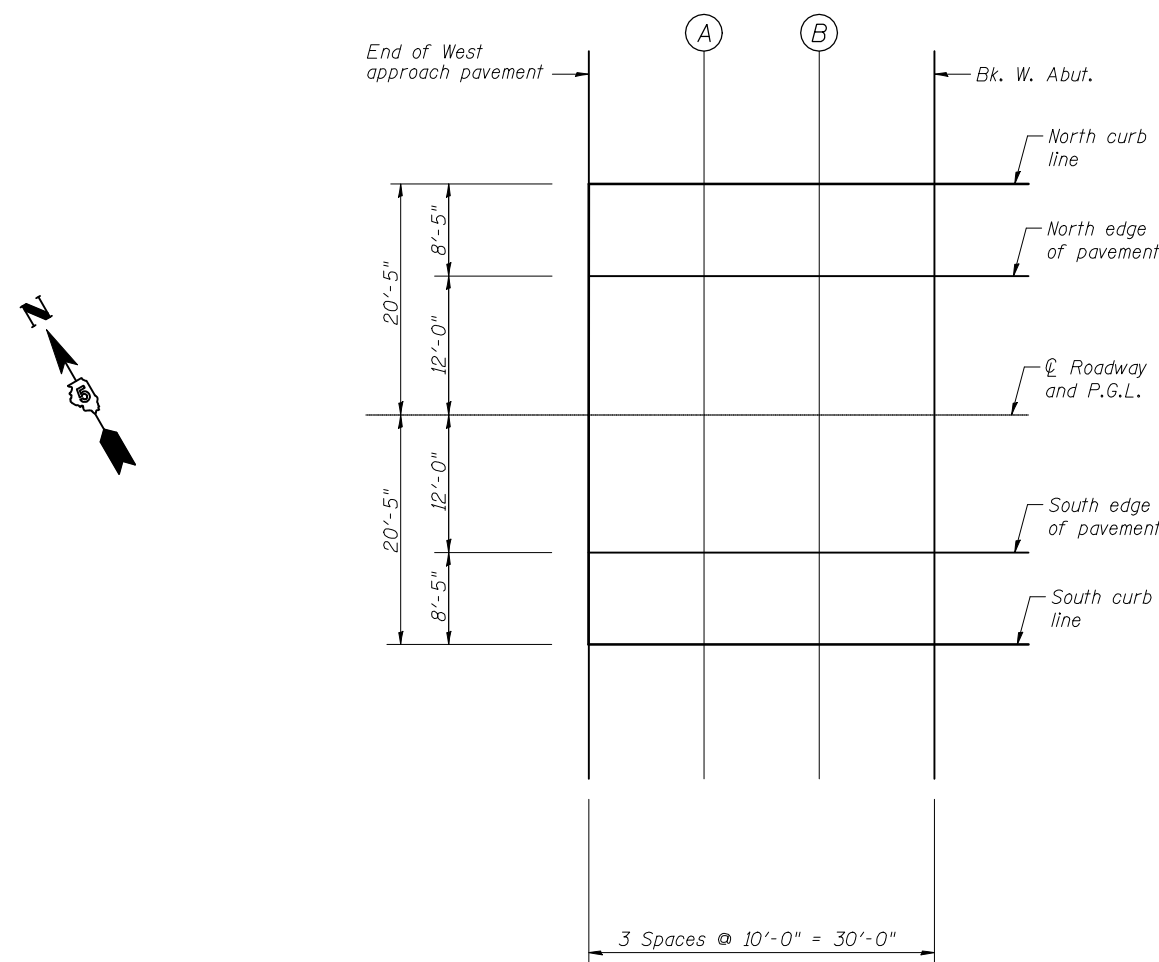
Location	Station	Offset	Theoretical Grade Elevations
End W. Appr. Pav't	406+19.75	0.00	767.77
A	406+29.75	0.00	767.82
B	406+39.75	0.00	767.86
Bk. W. Abut.	406+49.75	0.00	767.91

SOUTH EDGE OF PAVEMENT

Location	Station	Offset	Theoretical Grade Elevations
End W. Appr. Pav't	406+19.75	12.00	767.58
A	406+29.75	12.00	767.63
B	406+39.75	12.00	767.67
Bk. W. Abut.	406+49.75	12.00	767.72

SOUTH CURB LINE

Location	Station	Offset	Theoretical Grade Elevations
End W. Appr. Pav't	406+19.75	20.00	767.40
A	406+29.75	20.00	767.45
B	406+39.75	20.00	767.49
Bk. W. Abut.	406+49.75	20.00	767.54



PLAN

**TOP OF WEST APPROACH
SLAB ELEVATIONS
US. ROUTE 150
OVER KICKAPOO CREEK
FAU ROUTE 6406 SECTION (BR-2)
MCLEAN COUNTY
STATION 407+23.50
STRUCTURE NO. 057-0246**