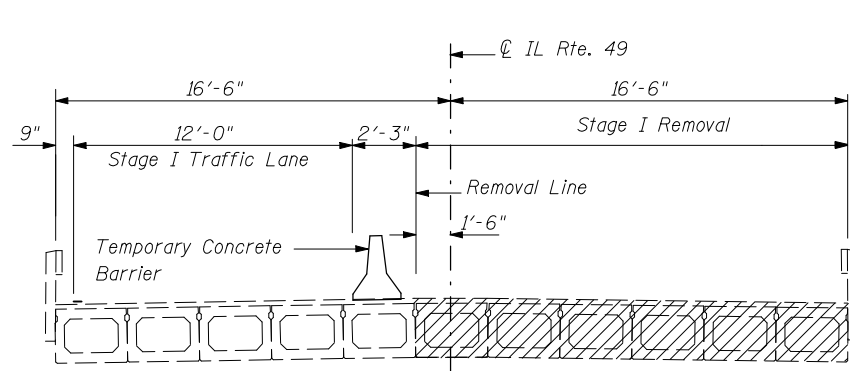


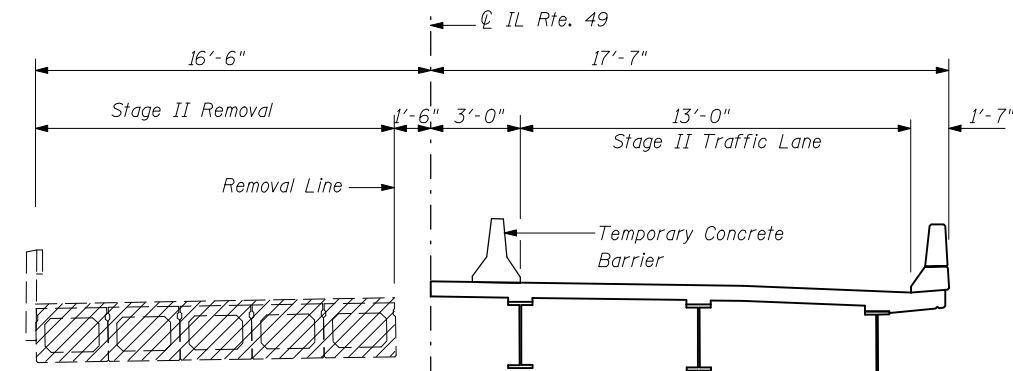
ROUTE NO.	SECTION	COUNTY	TOTAL SHEETS	SHEET NO.
FAP 836	118 BR-2	Champaign	45	13
FED. ROAD DIST. NO. 5	ILLINOIS	FED. AID PROJECT-		

SHEET NO. 2
21 SHEETS

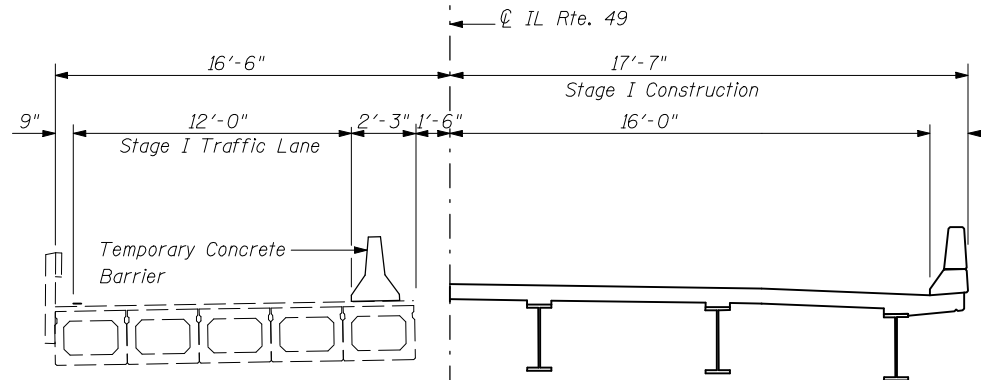


STAGE I REMOVAL
(Looking North)

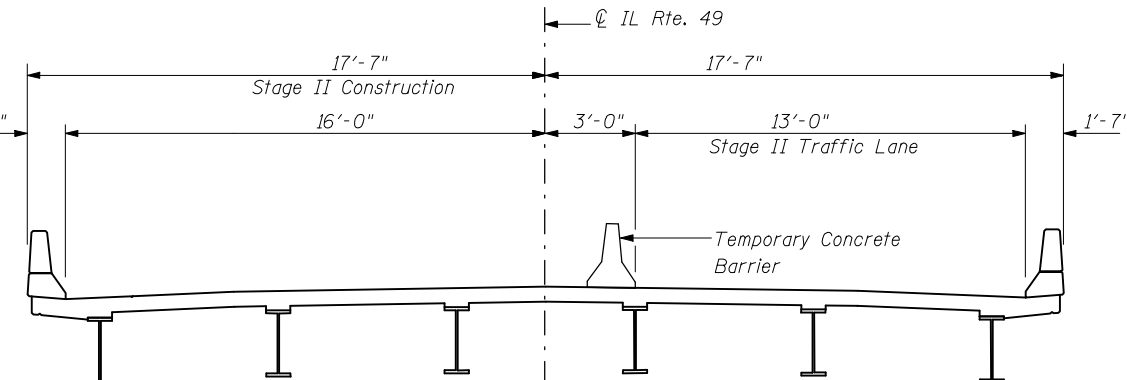
Notes:
1. Hatched area indicate Removal of Existing Structure.
2. For quantity of "Temporary Concrete Barrier" see Roadway Plans.
For details see Sheet 19 of 21



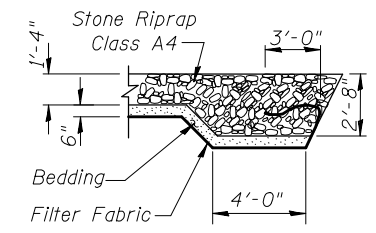
STAGE II REMOVAL
(Looking North)



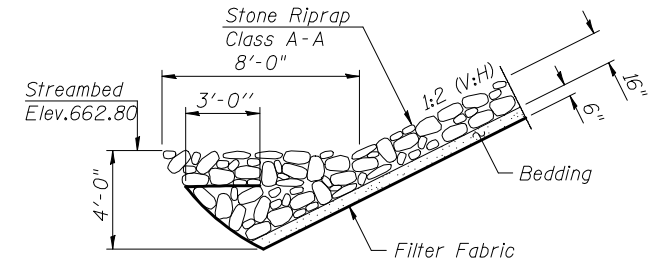
STAGE I CONSTRUCTION
(Looking North)



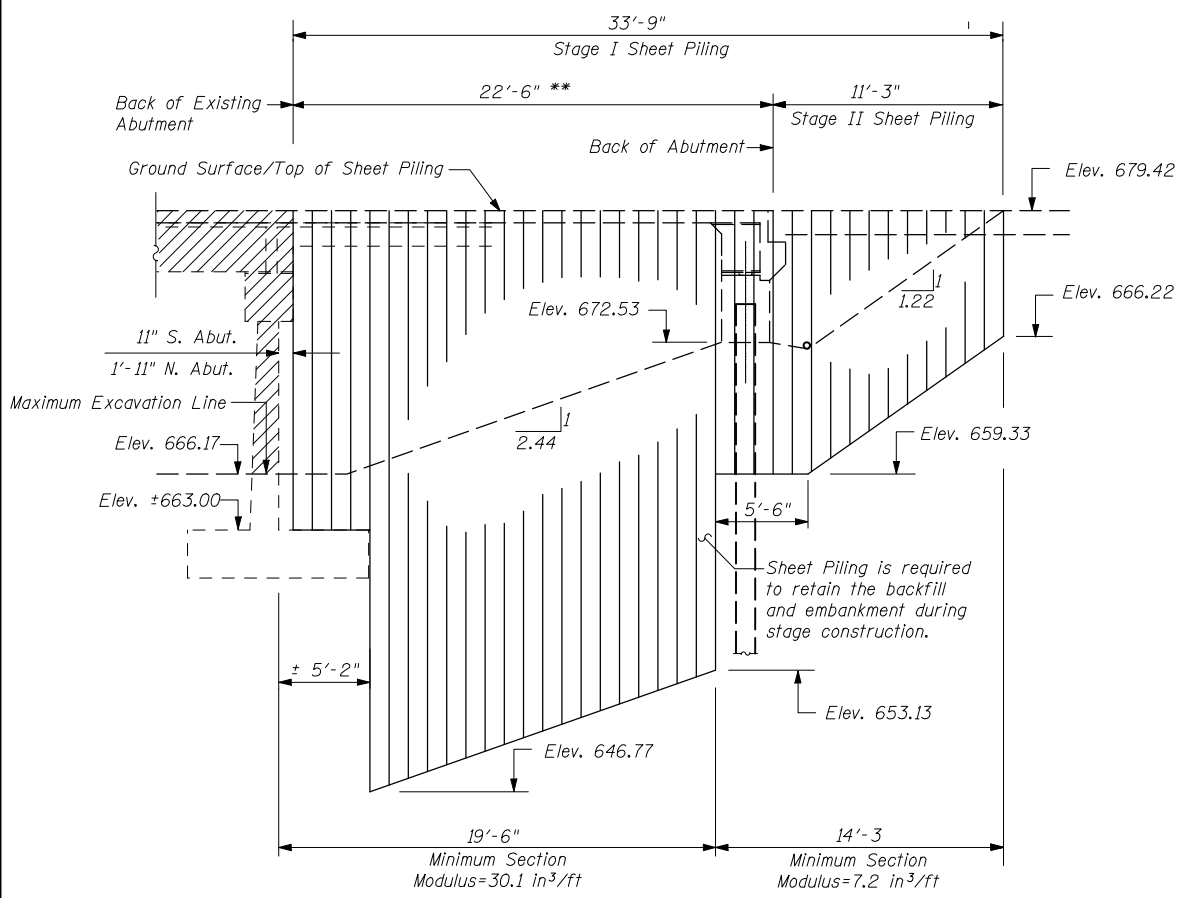
STAGE II CONSTRUCTION
(Looking North)



SECTION A-A
(Flank Treatment)



SECTION B-B
(Toe Treatment)



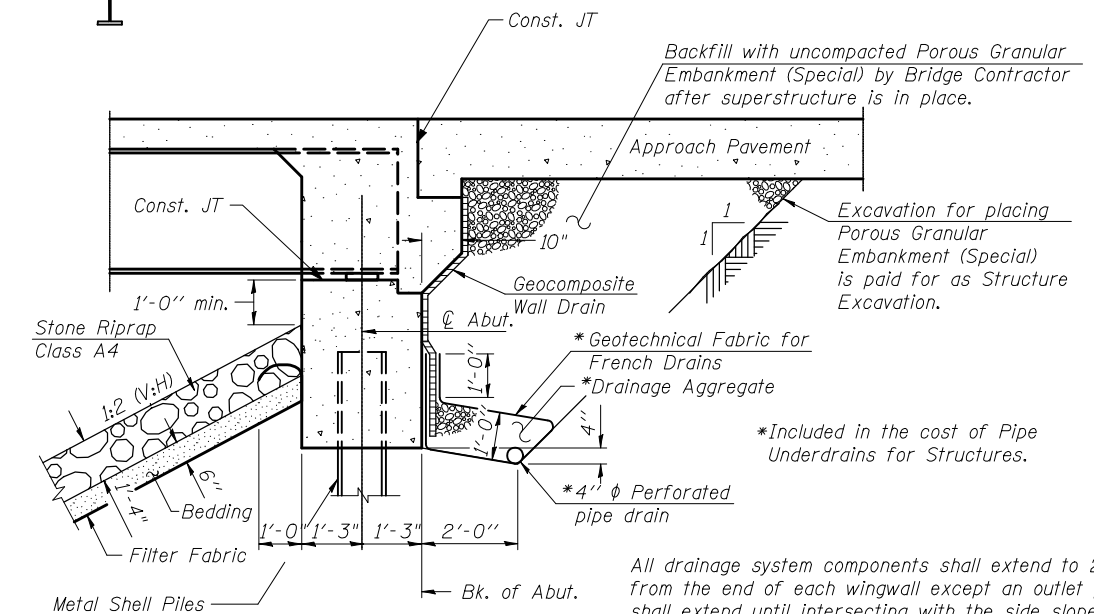
TEMPORARY SHEET PILING ELEVATION

(Slopes and Distances Shown Along Alignment of Sheet Piling)

Sheet Piling Notes:

- If the Contractor chooses to alter the temporary cantilevered sheet piling design requirements shown on the plans a design submittal including plan details and calculations will be required for review and acceptance by the Engineer.
 - The Contractor shall connect the first sheet to the existing abutment wall to ensure stability of sheets driven to the top of the existing footing. This connection shall be reviewed and accepted by the Engineer and included in the cost for Temporary Sheet Piling.
- ** This Portion of Sheet Piling shall be removed after completion of Stage I Construction

Item	Unit	Qty
Temporary Sheet Piling	Sq. Ft.	1527



SECTION THRU INTEGRAL ABUTMENT
(© Rt. L's)

REVISIONS	
NAME	DATE

ILLINOIS DEPARTMENT OF TRANSPORTATION
STAGE CONSTRUCTION
IL RTE. 49 OVER LITTLE VERMILION RIVER
FAP 836 SECTION 118BR-2
CHAMPAIGN COUNTY
STA. 688+85 STR. NO. 010-0284
SCALE: VERT. HORIZ. DATE MAY 2008
DRAWN BY RMH
CHECKED BY MJS

TUG PROJ. # 3107012-01
PLOT DATE = 8/19/2008 3:18:15 PM
FILE NAME = ...bridge\1\vr-stagecon.dgn