

STATE OF ILLINOIS
 DEPARTMENT OF TRANSPORTATION
 DIVISION OF HIGHWAYS

**PROPOSED
 HIGHWAY PLANS**

FAP ROUTE 325 (IL 16)
 SECTION (14, 116)L
 MACOUPIN COUNTY

F.A.P. RTE.	SECTION	COUNTY	TOTAL SHEETS	SHEET NO.
325	(14, 116)L	MACOUPIN	8	1
FED. ROAD DIST. NO.	ILLINOIS	CONTRACT NO. 72C17		

★ 8+1=9

D-95-091-08

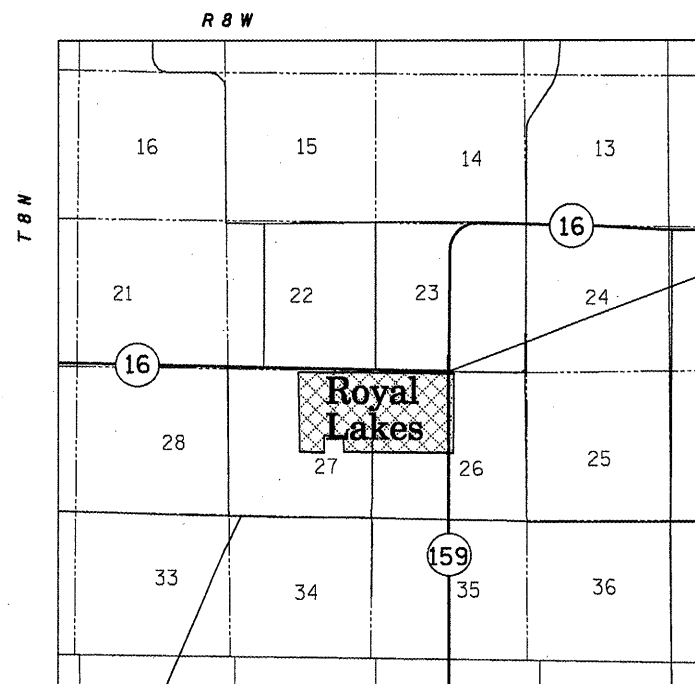
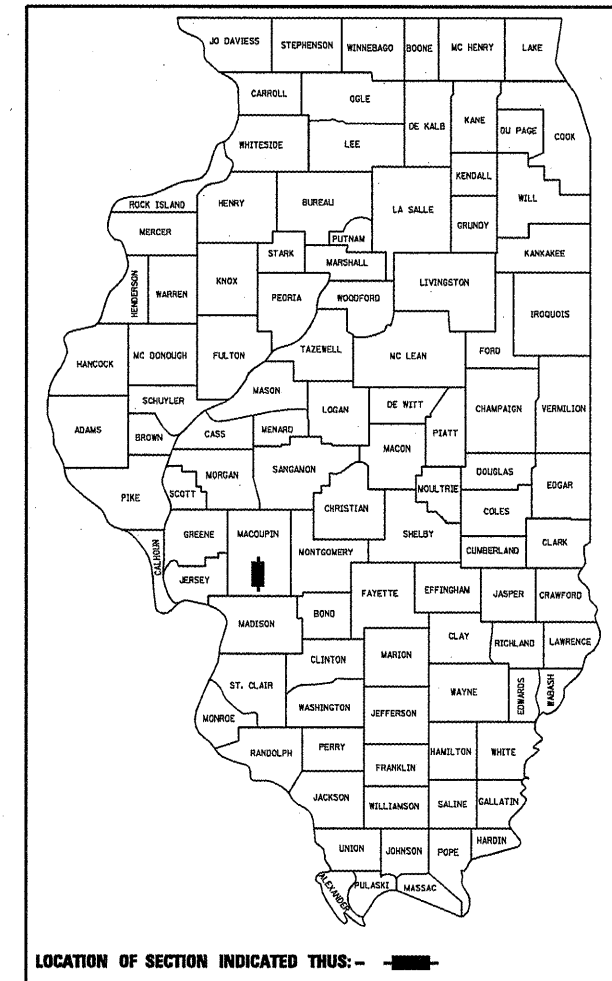
INDEX OF SHEETS

- 1 **COVERSHEET**
- 2 **GENERAL NOTES**
- 3 **SUMMARY OF QUANTITIES**
- 4 **PLAN SHEET**
- 5-8 **LIGHTING DETAILS**
- 8A. **LUMINAIRE PERFORMANCE TABLE**

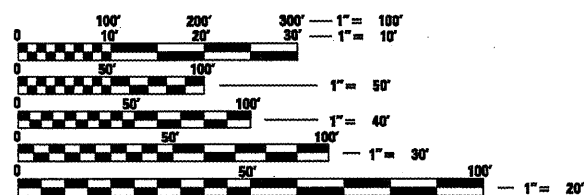
HIGHWAY STANDARDS

701001-01	701901
701006-02	805001
701301-02	000001-05
701201-02	

C-96-091-08



PROJECT LOCATION:
 INTERSECTION OF IL 16 WITH
 IL 159 AT ROYAL LAKES



FULL SIZE PLANS HAVE BEEN PREPARED USING STANDARD ENGINEERING SCALES. REDUCED SIZED PLANS WILL NOT CONFORM TO STANDARD SCALES. IN MAKING MEASUREMENTS ON REDUCED PLANS, THE ABOVE SCALES MAY BE USED.

J.U.L.I.E.
 JOINT UTILITY LOCATION INFORMATION FOR EXCAVATION
 1-800-892-0123
 OR 811

PROJECT ENGINEER: SAL MADONIA (217) 782-4761
 PROJECT MANAGER: JEFF MYERS (217) 524-7940

CONTRACT NO. 72C17

0 1 2 3 4 5 MILES



SCALE



STATE OF ILLINOIS
 DEPARTMENT OF TRANSPORTATION
 DIVISION OF HIGHWAYS

SUBMITTED *Aug 5 2008*
Roger L. Dickel
 DEPUTY DIRECTOR OF HIGHWAYS, REGION ENGINEER

October 3, 2008
Eric E. Harm
 ENGINEER OF DESIGN AND ENVIRONMENT

October 3, 2008
Christine M. Reed
 DIRECTOR OF HIGHWAYS, CHIEF ENGINEER

**PRINTED BY THE AUTHORITY
 OF THE STATE OF ILLINOIS**

Rev.