

SUMMARY OF QUANTITIES			100% STATE TOTAL QUANTITIES	CONSTRUCTION TYPE CODE SFTY-2A	
CODE NO	ITEM	UNIT			
50300225	CONCRETE STRUCTURES	CU YD	23	23	
50501130	STRUCTURAL STEEL REPAIR	POUND	11,110	11,110	△
50800205	REINFORCEMENT BARS, EPOXY COATED	POUND	3020	3020	
67100100	MOBILIZATION	L SUM	1	1	
70100420	TRAFFIC CONTROL AND PROTECTION, STANDARD 701411	EACH	2	2	
70100800	TRAFFIC CONTROL AND PROTECTION, STANDARD 701401	L SUM	1	1	

△ Rev. 10-27-08

FILE NAME = c:\projects\74347\d\74347sht-soq.dgn	USER NAME = steffanmk	DESIGNED -	REVISED -	<b>STATE OF ILLINOIS DEPARTMENT OF TRANSPORTATION</b>	<b>GENERAL NOTES &amp; INDEX OF SHEETS</b>	F.A.P. RTE.	SECTION	COUNTY	TOTAL SHEETS	SHEET NO.	
		DRAWN -	REVISED -			327	D-7 BRIDGE REPAIR 2009-1	LAWRENCE	6	3	
		CHECKED -	REVISED -			CONTRACT NO. 74347					
		DATE	REVISED -			SCALE:	SHEET NO.	OF	SHEETS	STA.	TO STA.

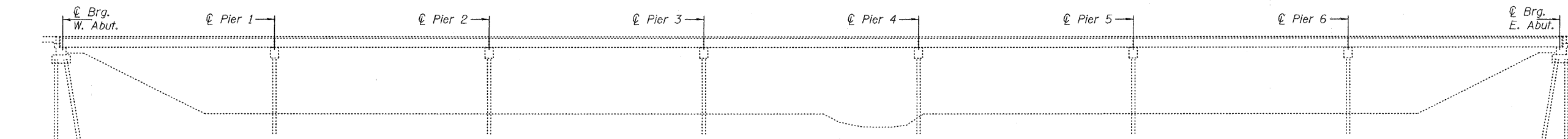
Rev.

STATE OF ILLINOIS  
DEPARTMENT OF TRANSPORTATION

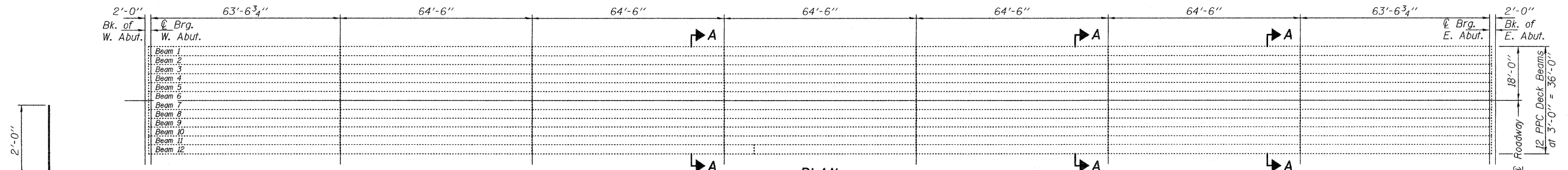
\* D7 Bridge Repair 2009-1

ROUTE NO.	SECTION	COUNTY	TOTAL SHEETS	SHEET NO.	SHEET NO. 1 1 SHEETS
FAP 327	*	Lawrence	6	4	
FED. ROAD DIST. NO. 7		ILLINOIS	FED. AID PROJECT		

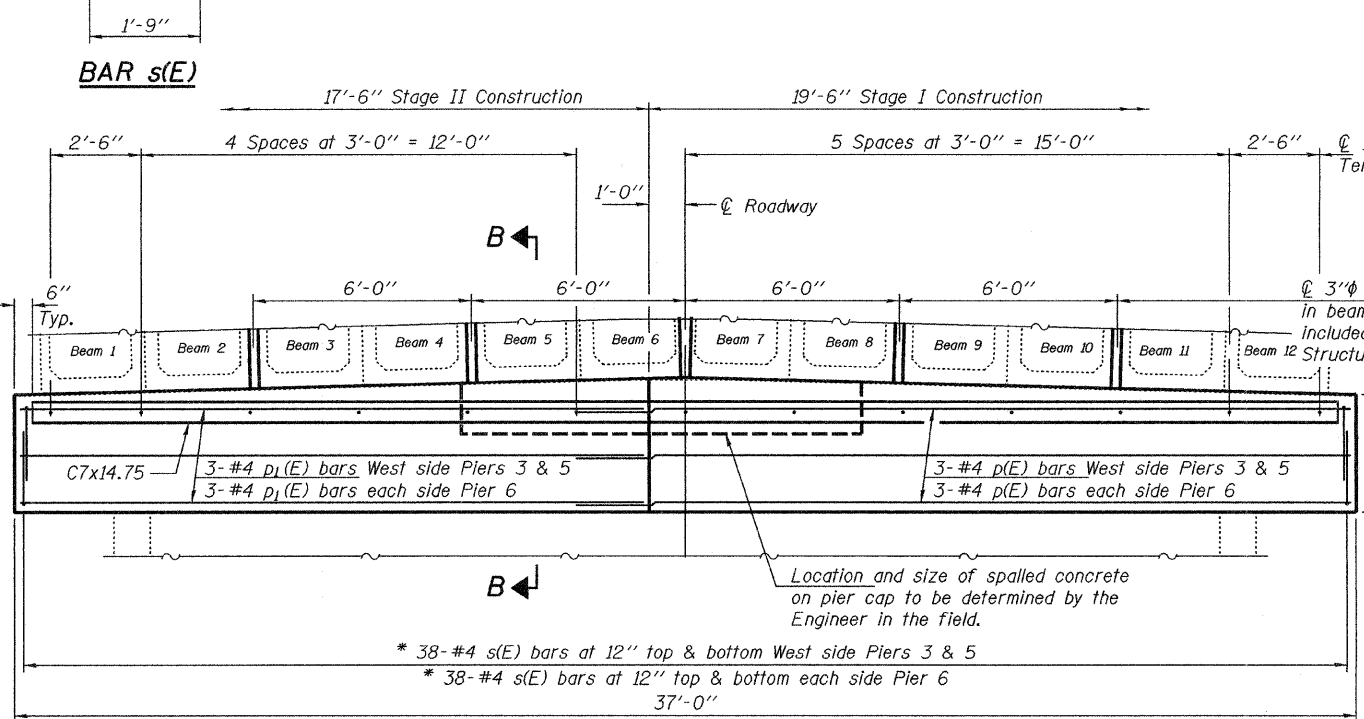
Contract Number: 74347



ELEVATION

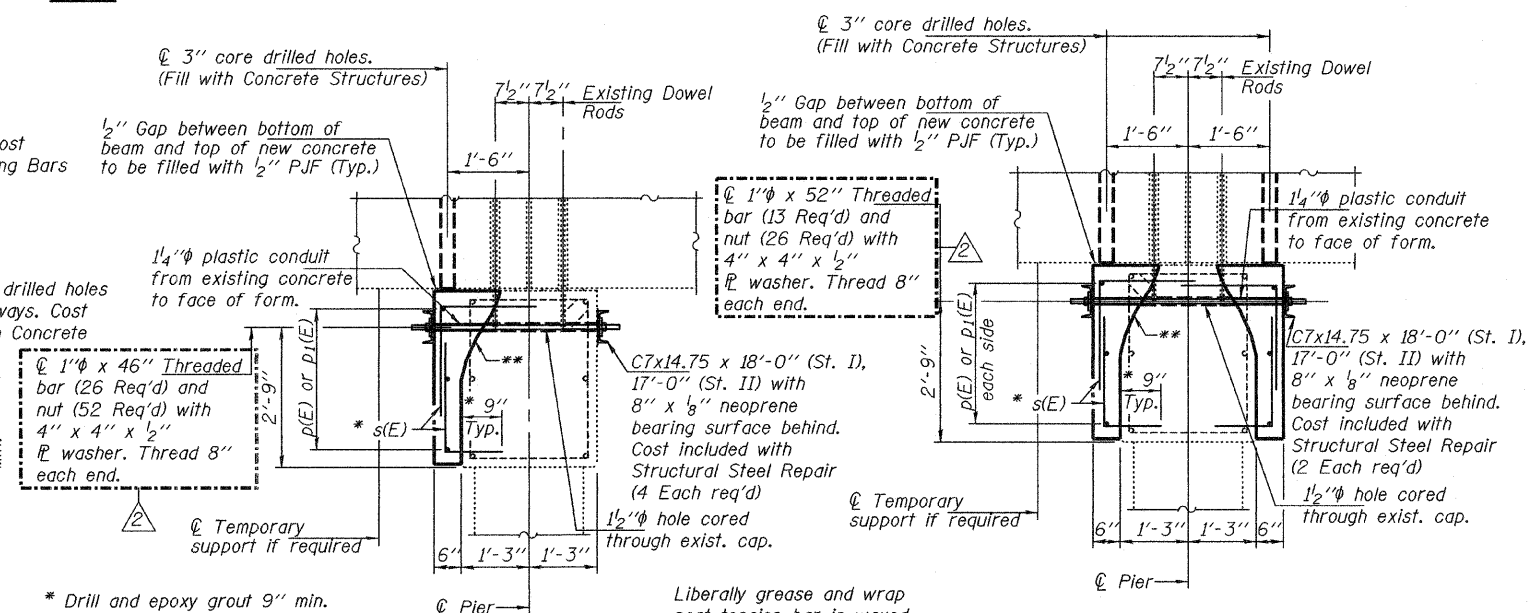


PLAN



SECTION A-A

Stage I traffic control shall remain in place until Stage I concrete has cured.  
Stage II traffic control shall remain in place until Stage II concrete has cured.



SECTION B-B

(Piers 3 & 5)

SECTION B-B

(Pier 6)

\* Drill and epoxy grout 9" min. into existing cap according to Article 584 of the Standard Specifications. Trim leg to maintain minimum clearance. Cost included with Reinforcement Bars, Epoxy Coated.

GENERAL NOTES

The Contractor shall use extreme care during concrete removal so as not to damage the PPC Deck beams.  
Existing exposed reinforcement shall be cleaned, straightened and incorporated into the new construction.  
Any reinforcement bars that are damaged during concrete removal shall be replaced with an approved bar splicer or anchorage system. Cost shall be included with Concrete Structures.  
Plan dimensions and details relative to existing plans are subject to routine variations. The Contractor shall field verify existing dimensions and details affecting new construction and make necessary approved adjustments prior to construction or ordering of materials. Such variations shall not be cause for additional compensation for a change in scope of the work, however, the Contractor will be paid for the quantity actually furnished based upon the unit price bid for the work.  
Reinforcement bars shall conform to the requirements of ASTM A 706 Gr 60 (IL Modified).  
Reinforcement bars designated (E) shall be epoxy coated.  
Self consolidating concrete shall be used throughout. See Special Provisions.

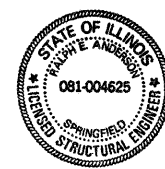
TOTAL BILL OF MATERIAL

Bar	No.	Size	Length	Shape
p(E)	12	#4	21'-6"	—
p1(E)	12	#4	17'-4"	—
s(E)	304	#4	3'-9"	L
Structural Steel Repair		Pound	3700	②
Concrete Structures		Cu. Yd.	9.2	
Reinforcement Bars, Epoxy Coated		Pound	1240	

PIER CAP REPAIR DETAILS  
FAP 327 OVER ALLISON DITCH  
LAWRENCE COUNTY  
SN 051-0024

DESIGNED	Victor H. Veliz
CHECKED	Ramin Baliva
DRAWN	baliva
CHECKED	VHV DAB

SEPTEMBER 9, 2008  
EXAMINED: [Signature]  
ENGINEER OF STRUCTURAL SERVICES  
PASSED: [Signature]  
ENGINEER OF BRIDGES AND STRUCTURES



Expires: November 30, 2010

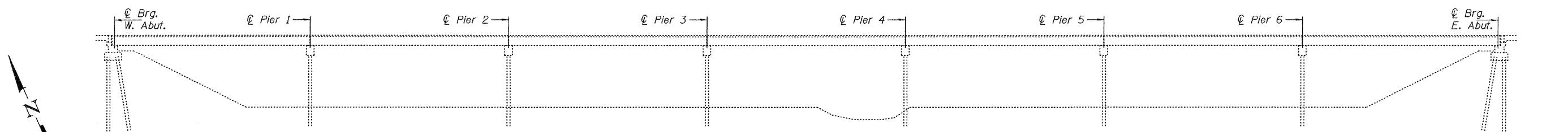
STATE OF ILLINOIS  
DEPARTMENT OF TRANSPORTATION

\* D7 Bridge Repair 2009-1

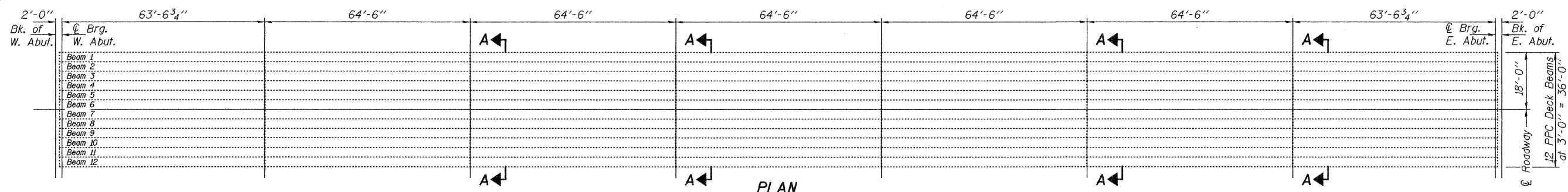
ROUTE NO.	SECTION	COUNTY	LIST SHEETS	SHEET NO.
FAP 327	*	Lawrence	6	5
FED. ROAD DIST. NO. 7	ILLINOIS	FED. AID PROJECT		

SHEET NO. 1  
1 SHEETS

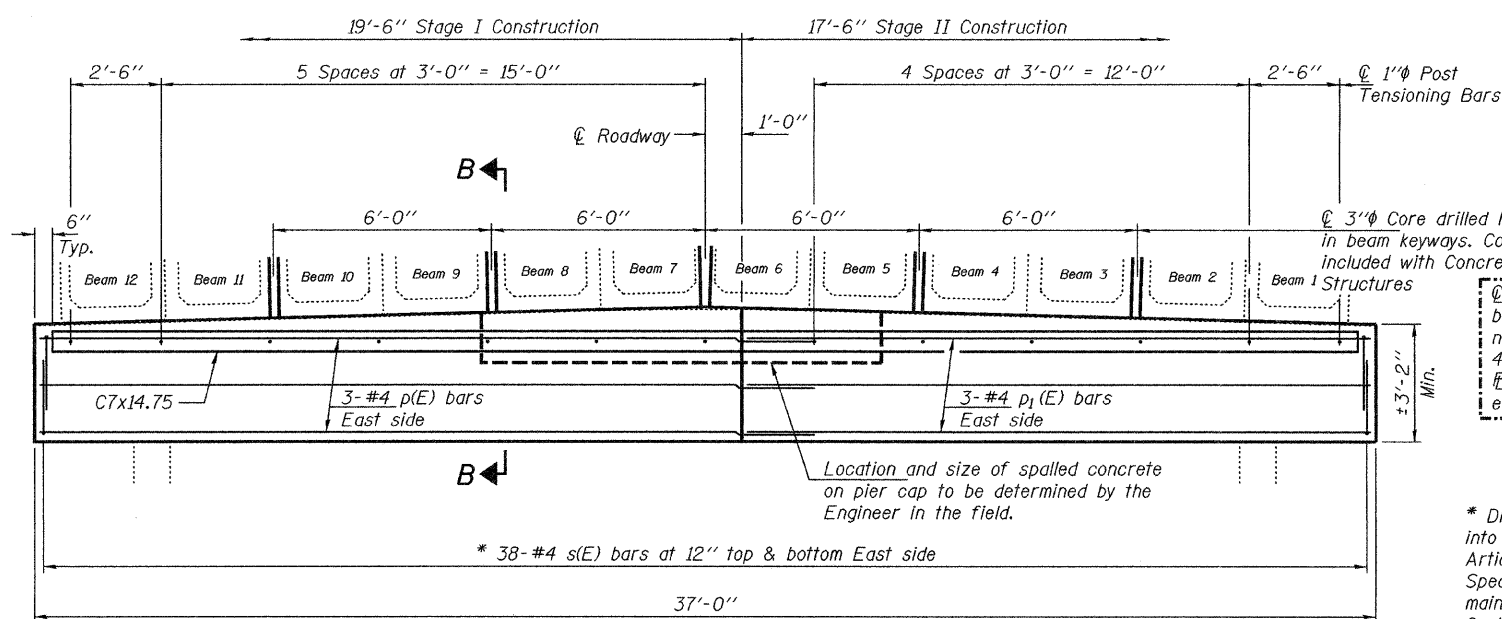
Contract Number: 74347



ELEVATION

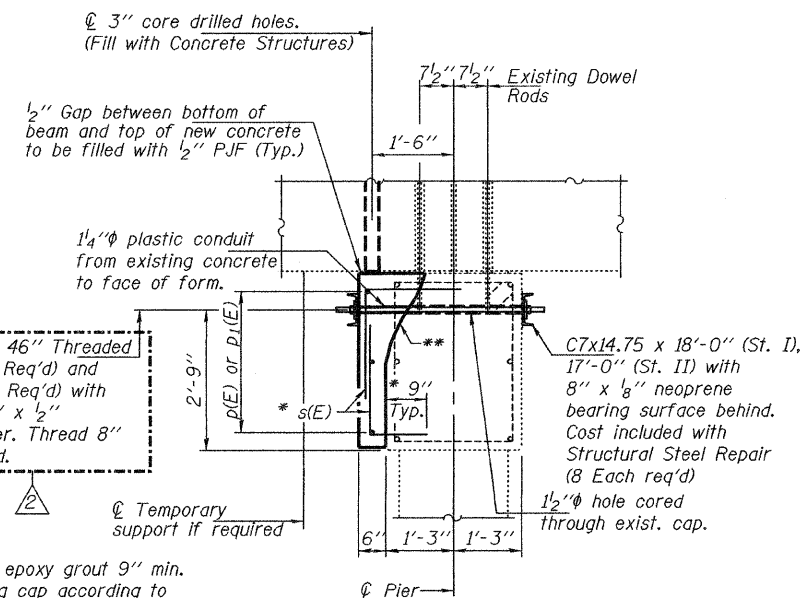


PLAN



SECTION A-A

Stage I traffic control shall remain in place until Stage I concrete has cured.  
Stage II traffic control shall remain in place until Stage II concrete has cured.



SECTION B-B

\* Drill and epoxy grout 9" min. into existing cap according to Article 584 of the Standard Specifications. Trim leg to maintain minimum clearance. Cost included with Reinforcement Bars, Epoxy Coated.

GENERAL NOTES

The Contractor shall use extreme care during concrete removal so as not to damage the PPC Deck beams.

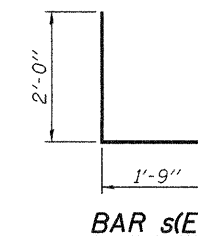
Existing exposed reinforcement shall be cleaned, straightened and incorporated into the new construction. Any reinforcement bars that are damaged during concrete removal shall be replaced with an approved bar splicer or anchorage system. Cost shall be included with Concrete Structures.

Plan dimensions and details relative to existing plans are subject to routine variations. The Contractor shall field verify existing dimensions and details affecting new construction and make necessary approved adjustments prior to construction or ordering of materials. Such variations shall not be cause for additional compensation for a change in scope of the work, however, the Contractor will be paid for the quantity actually furnished based upon the unit price bid for the work.

Reinforcement bars shall conform to the requirements of ASTM A 706 Gr 60 (IL Modified).

Reinforcement bars designated (E) shall be epoxy coated.

Self consolidating concrete shall be used throughout. See Special Provisions.



BAR s(E)

TOTAL BILL OF MATERIAL

Bar	No.	Size	Length	Shape
p(E)	12	#4	21'-6"	—
p <sub>1</sub> (E)	12	#4	17'-4"	—
s(E)	304	#4	3'-9"	L
Structural Steel Repair		Pound	4940	②
Concrete Structures		Cu. Yd.	9.1	
Reinforcement Bars, Epoxy Coated		Pound	1240	

DESIGNED	Vicki H. Veliz
CHECKED	Rainier Belin
DRAWN	baliva
CHECKED	VHV

SEPTMBER 9, 2008	
EXAMINED	Robert C. Adams
ENGINEER OF STRUCTURAL SERVICES	
PASSED	Robert C. Adams
ENGINEER OF BRIDGES AND STRUCTURES	



Expires: November 30, 2010

\*\* To ensure stability of the existing beams, the removal shall not go deeper than the existing dowel rods. Cost included with Concrete Structures.

PIER CAP REPAIR DETAILS  
FAP 327 OVER ALLISON DITCH  
LAWRENCE COUNTY  
SN 051-0025

STATE OF ILLINOIS  
DEPARTMENT OF TRANSPORTATION

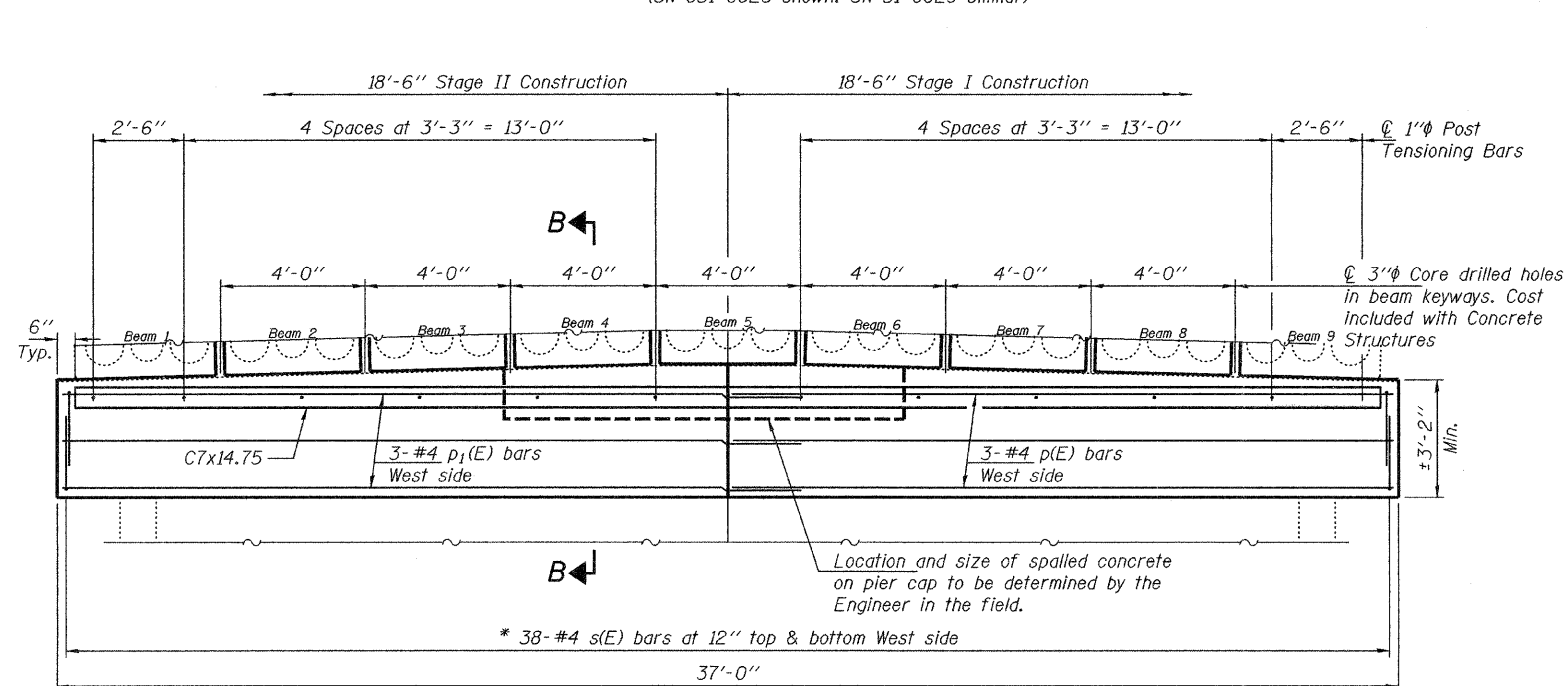
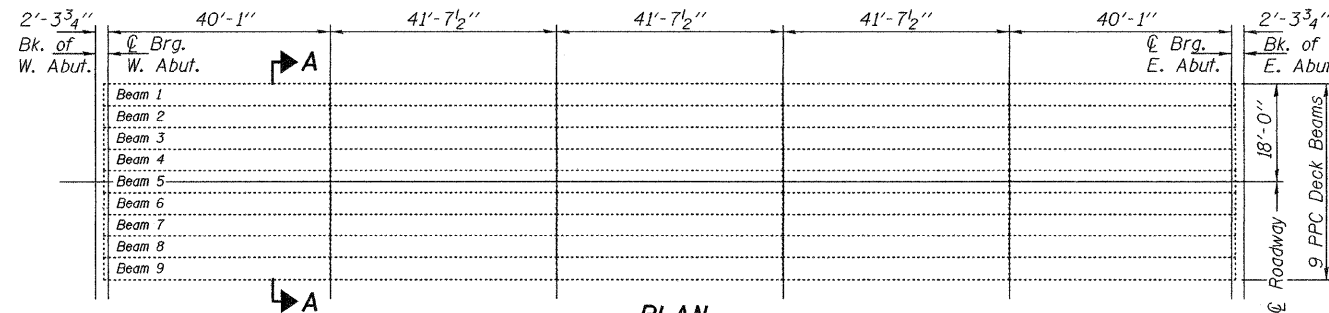
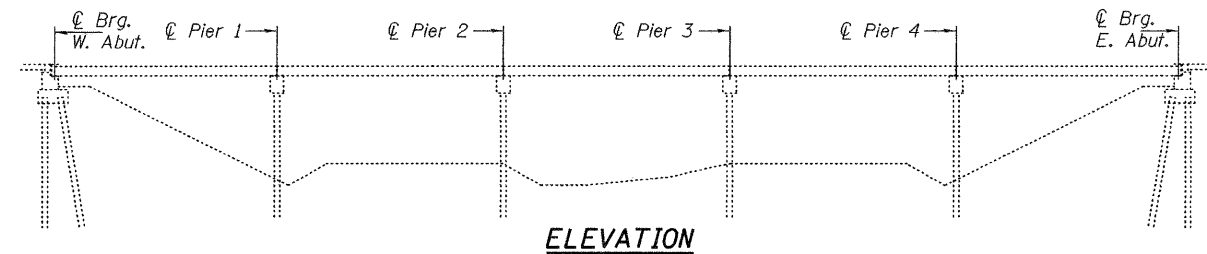
\* D7 Bridge Repair 2009-1

ROUTE NO.	SECTION	COUNTY	TOTAL SHEETS	SHEET NO.	SHEET NO. 1
FAP 327	#	Lawrence	6	6	1 SHEETS
FED. ROAD DIST. NO. 7	ILLINOIS	FED. AID PROJECT-			

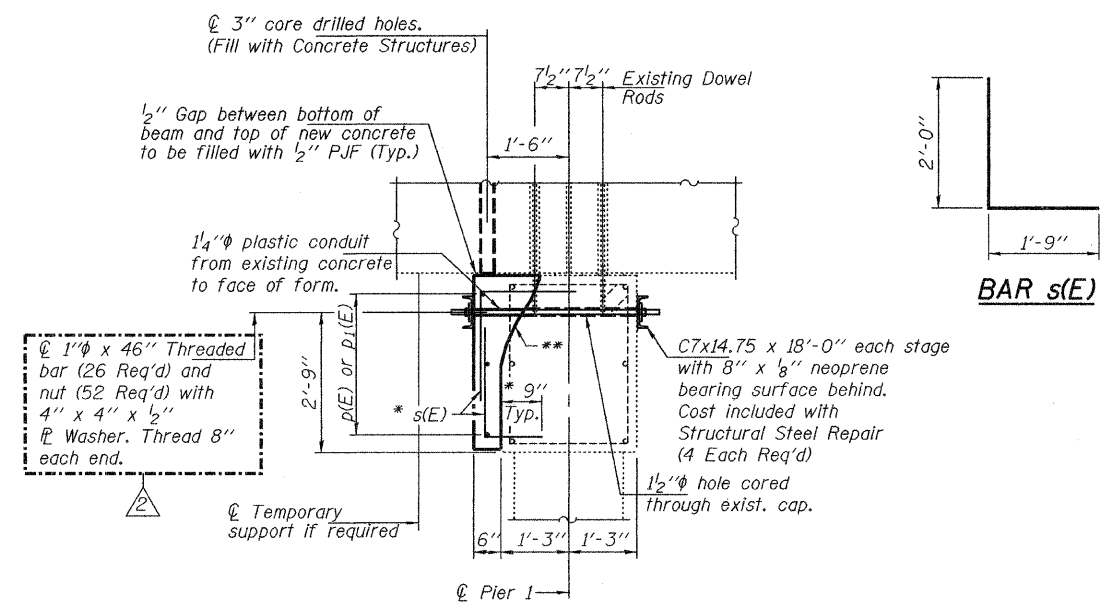
Contract Number: 74347

**GENERAL NOTES**

The Contractor shall use extreme care during concrete removal so as not to damage the PPC Deck beams.  
Existing exposed reinforcement shall be cleaned, straightened and incorporated into the new construction.  
Any reinforcement bars that are damaged during concrete removal shall be replaced with an approved bar splicer or anchorage system. Cost shall be included with Concrete Structures.  
Plan dimensions and details relative to existing plans are subject to routine variations. The Contractor shall field verify existing dimensions and details affecting new construction and make necessary approved adjustments prior to construction or ordering of materials. Such variations shall not be cause for additional compensation for a change in scope of the work, however, the Contractor will be paid for the quantity actually furnished based upon the unit price bid for the work.  
Reinforcement bars shall conform to the requirements of ASTM A 706 Gr 60 (IL Modified).  
Reinforcement bars designated (E) shall be epoxy coated.  
Self consolidating concrete shall be used throughout. See Special Provisions.



Stage I traffic control shall remain in place until Stage I concrete has cured.  
Stage II traffic control shall remain in place until Stage II concrete has cured.



\* Drill and epoxy grout 9" min. into existing cap according to Article 584 of the Standard Specifications. Trim leg to maintain minimum clearance. Cost included with Reinforcement Bars, Epoxy Coated.

**TOTAL BILL OF MATERIAL**

Bar	No.	Size	Length	Shape
p(E)	6	#4	20'-6"	—
p <sub>1</sub> (E)	6	#4	18'-4"	—
s(E)	152	#4	3'-9"	L
Structural Steel Repair		Pound	2470	
Concrete Structures		Cu. Yd.	4.7	
Reinforcement Bars, Epoxy Coated		Pound	540	

**PIER CAP REPAIR DETAILS**  
FAP 327 OVER ALLISON DITCH  
LAWRENCE COUNTY  
SN 051-0028 & 0029

DESIGNED Victor H. Veliz  
CHECKED [Signature]  
DRAWN ballva  
CHECKED VHV

SEPTEMBER 9, 2008  
EXAMINED [Signature]  
PASSED [Signature]



\*\* To ensure stability of the existing beams, the removal shall not go deeper than the existing dowel rods. Cost included with Concrete Structures.

Expires: November 30, 2010