

74347

F.A.P. RTE.	SECTION	COUNTY	TOTAL SHEETS	SHEET NO.
327	D-7 BRIDGE REPAIR 2009-1	LAWRENCE	6	1
FED. ROAD DIST. NO.	ILLINOIS	CONTRACT NO.		

STATE OF ILLINOIS  
DEPARTMENT OF TRANSPORTATION  
DIVISION OF HIGHWAYS

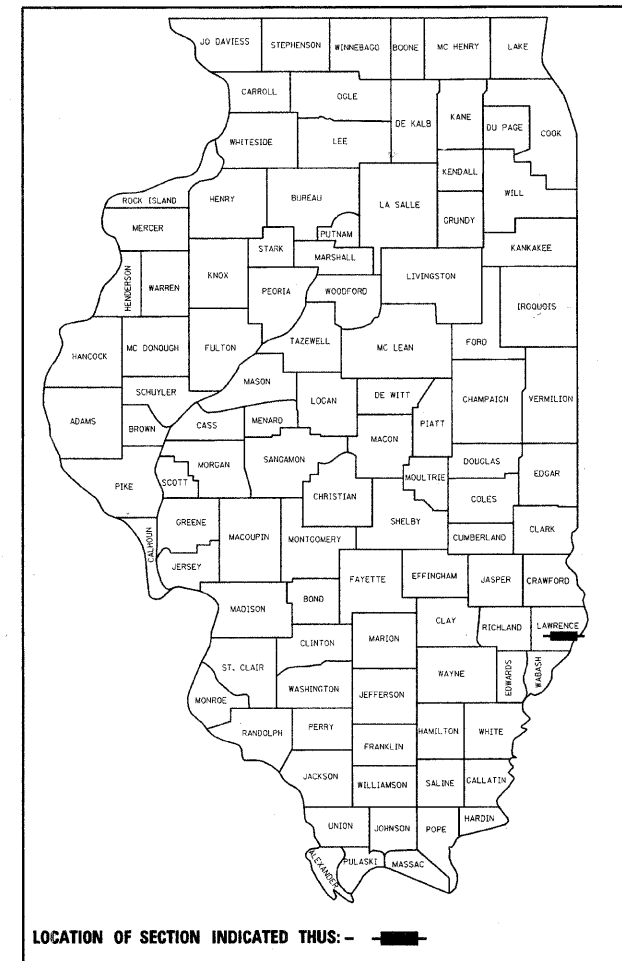
**PROPOSED  
HIGHWAY PLANS**

FAP ROUTE 327 (US 50)  
SECTION D7 BRIDGE REPAIR 2009-1

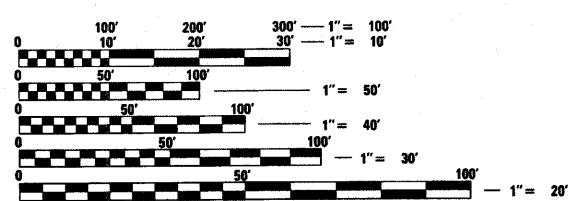
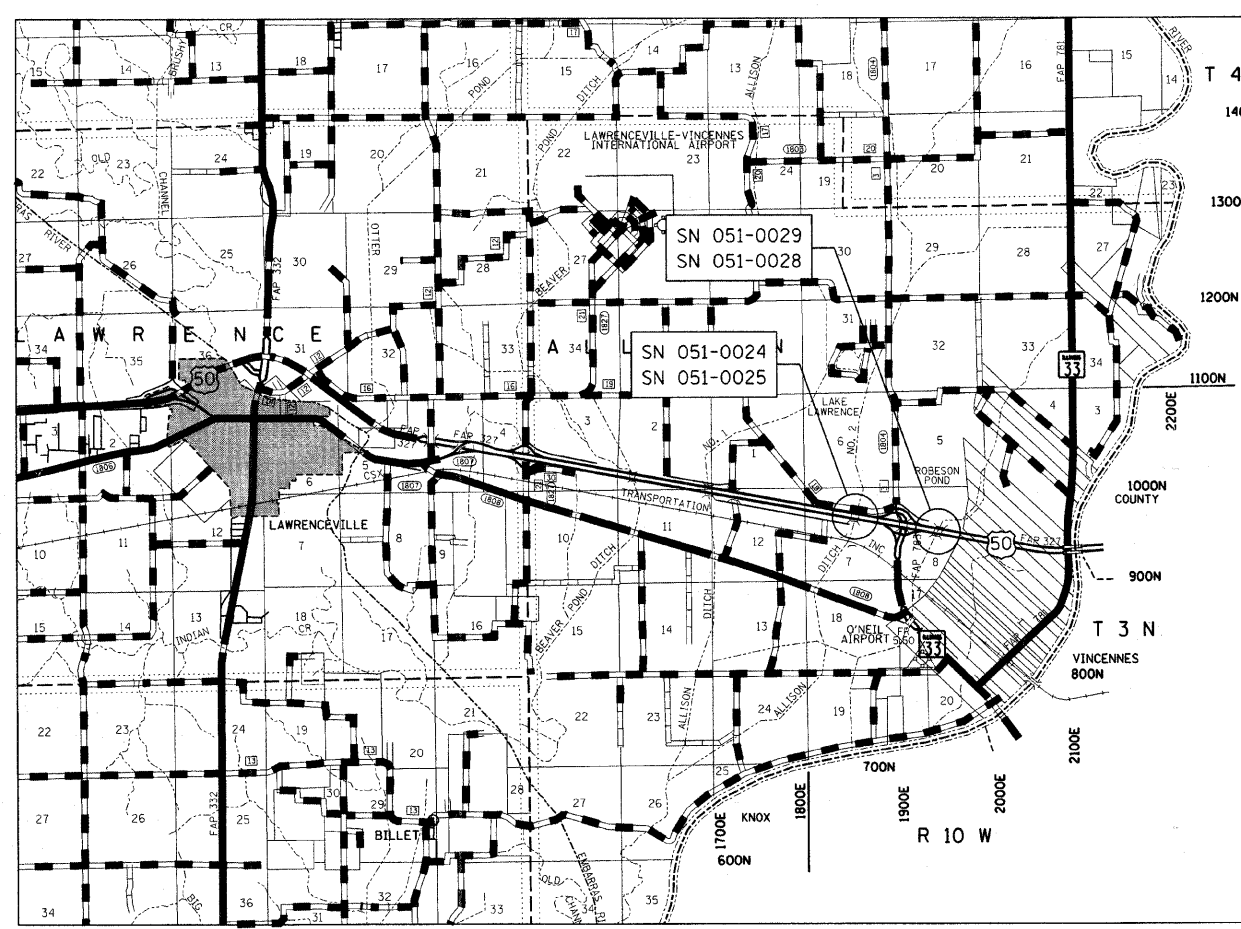
**BRIDGE REPAIR  
LAWRENCE COUNTY**

FOR INDEX OF SHEETS, SEE SHEET NO.

D-97-002-09



C-97-002-09



FULL SIZE PLANS HAVE BEEN PREPARED USING STANDARD ENGINEERING SCALES. REDUCED SIZED PLANS WILL NOT CONFORM TO STANDARD SCALES. IN MAKING MEASUREMENTS ON REDUCED PLANS, THE ABOVE SCALES MAY BE USED.

J.U.L.I.E.  
JOINT UTILITY LOCATION INFORMATION FOR EXCAVATION  
1-800-892-0123  
OR 811

PROJECT ENGINEER: MARK DAUGHERTY  
PROJECT MANAGER: JOYCE HEMMEN

CONTRACT NO. 74347

STATE OF ILLINOIS  
DEPARTMENT OF TRANSPORTATION  
DIVISION OF HIGHWAYS

SUBMITTED August 29 20 08

*Ronald S. Santella*  
DEPUTY DIRECTOR OF HIGHWAYS, REGION ENGINEER

October 3, 20 08  
*Eric E. Harms*  
ENGINEER OF DESIGN AND ENVIRONMENT

October 3, 20 08  
*Christine M. Reed*  
DIRECTOR OF HIGHWAYS, CHIEF ENGINEER

**PRINTED BY THE AUTHORITY  
OF THE STATE OF ILLINOIS**

GENERAL NOTES

THIS SECTION SHALL BE CONSTRUCTED IN ACCORDANCE WITH THE PLANS; THE "STANDARD SPECIFICATIONS FOR ROAD AND BRIDGE CONSTRUCTION" ADOPTED JANUARY 1, 2007; AND THE SPECIAL PROVISIONS INCLUDED IN THE PROPOSAL.

THE WORK INCLUDED IN THIS SECTION CONSISTS OF PIER CAP REPIARS FOR THE FOLLOWING STRUCTURE 051-0024, 051-0025, 051-0028 AND 051-0029 ON FAP 327 (US 50) OVER ALLISON DITCH.

PLAN DIMENSIONS AND DETAILS RELATIVE TO THE EXISTING STRUCTURE HAVE BEEN TAKEN FROM EXISTING PLANS AND ARE SUBJECT TO NOMINAL CONSTRUCTION VARIATIONS. IT SHALL BE THE CONTRACTOR RESPONSIBILITY TO VERIFY SUCH DIMENSIONS AND DETAILS IN THE FIELD AND MAKE NECESSARY APPROVED ADJUSTMENTS PRIOR TO THE CONSTRUCTION OR ORDERING OF MATERIAL. SUCH VARIATIONS SHALL NOT BE CAUSE FOR ADDITIONAL COMPENSATION OR A CHANGE IN THE SCOPE OF THE WORK. THE CONTRACTOR WILL BE PAID FOR THE QUANTITY ACTUALLY FURNISHED AT THE UNIT PRICE BID FOR THE WORK.

INDEX OF SHEETS

<u>SHEET NO.</u>	<u>ITEM</u>
1	COVER SHEET
2	INDEX OF SHEETS AND GENERAL NOTES
3	SUMMARY OF QUANTITIES
4	PIER CAP REPAIR DETAILS - SN 051-0024
5	PIER CAP REPAIR DETAILS - SN 051-0025
6	PIER CAP REPAIR DETAILS - SN 051-0028 & 051-0029

THE FOLLOWING STANDARDS ARE A PART OF THESE PLANS AND ARE INCLUDED AFTER SHEET NO. 6:

<u>STD. NO.</u>	<u>DESCRIPTION</u>
000001-05	STANDARD SYMBOLS, ABBREVIATIONS AND PATTERNS
701101-01	OFF ROAD MOVING OPERATIONS, 2L, 2W DAY ONLY
701400-02	APPROACH TO LANE CLOSURE, FREEWAY/EXPRESSWAY
701401-04	LANE CLOSURE, FREEWAY/EXPRESSWAY
701411-04	LANE CLOSURE, MULTILANE, AT ENTRANCE OR EXIT RAMP
701901	TRAFFIC CONTROL DEVICES

FILE NAME =	USER NAME = steffennk	DESIGNED -	REVISED -	<b>STATE OF ILLINOIS DEPARTMENT OF TRANSPORTATION</b>	<b>GENERAL NOTES &amp; INDEX OF SHEETS</b>	F.A.P. RTE.	SECTION	COUNTY	TOTAL SHEETS	SHEET NO.
ca:\projects\74347d\774347\ht-cover.dgn	DRAWN -	REVISED -	327			D-7 BRIDGE REPAIR 2009-1	LAWRENCE	6	2	
PLOT SCALE = 28,0000' / IN.	CHECKED -	REVISED -	CONTRACT NO. 74347							
PLOT DATE = 8/29/2008	DATE -	REVISED -	SCALE:			SHEET NO.	OF SHEETS	STA.	TO STA.	FED. ROAD DIST. NO.

SUMMARY OF QUANTITIES			100% STATE TOTAL QUANTITIES	CONSTRUCTION TYPE CODE	
CODE NO	ITEM	UNIT		SFTY-2A	
50300225	CONCRETE STRUCTURES	CU YD	23	23	
50501130	STRUCTURAL STEEL REPAIR	POUND	10860	10860	
50800205	REINFORCEMENT BARS, EPOXY COATED	POUND	3020	3020	
67100100	MOBILIZATION	L SUM	1	1	
70100420	TRAFFIC CONTROL AND PROTECTION, STANDARD 701411	EACH	2	2	
70100800	TRAFFIC CONTROL AND PROTECTION, STANDARD 701401	L SUM	1	1	

FILE NAME =  
c:\projects\74347\d\774347\sh:soq.dgn

USER NAME = steffanmk  
DESIGNED -  
DRAWN -  
PLOT SCALE = 20.0000 ' / IN.  
CHECKED -  
PLOT DATE = 8/29/2008  
DATE -

REVISOR -  
REVISOR -  
REVISOR -  
REVISOR -  
REVISOR -  
REVISOR -

DESIGNED -  
DRAWN -  
CHECKED -  
DATE -

STATE OF ILLINOIS  
DEPARTMENT OF TRANSPORTATION

GENERAL NOTES & INDEX OF SHEETS

SCALE: SHEET NO. OF SHEETS STA. TO STA.

F.A.P. SECTION COUNTY TOTAL SHEET SHEET  
RTE. 327 D-7 BRIDGE REPAIR 2009-1 LAWRENCE 6 3  
CONTRACT NO. 74347  
ILLINOIS FED. AID PROJECT

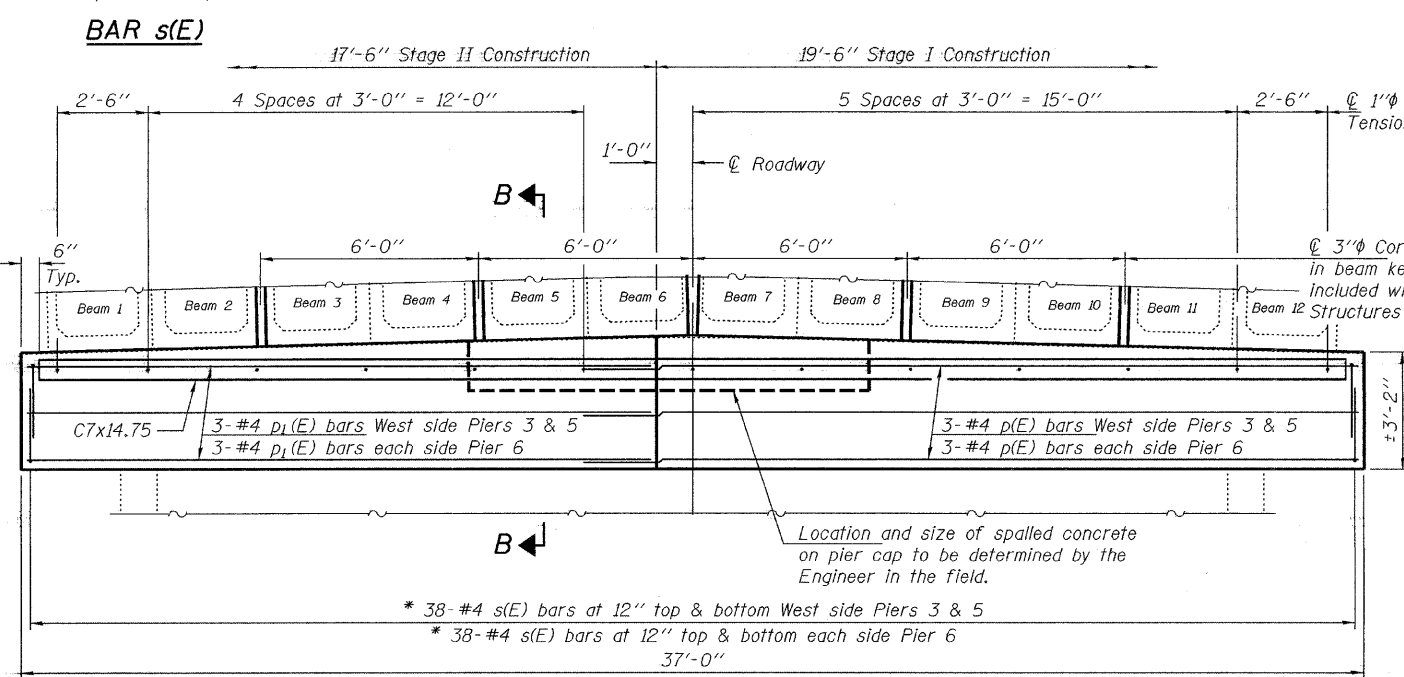
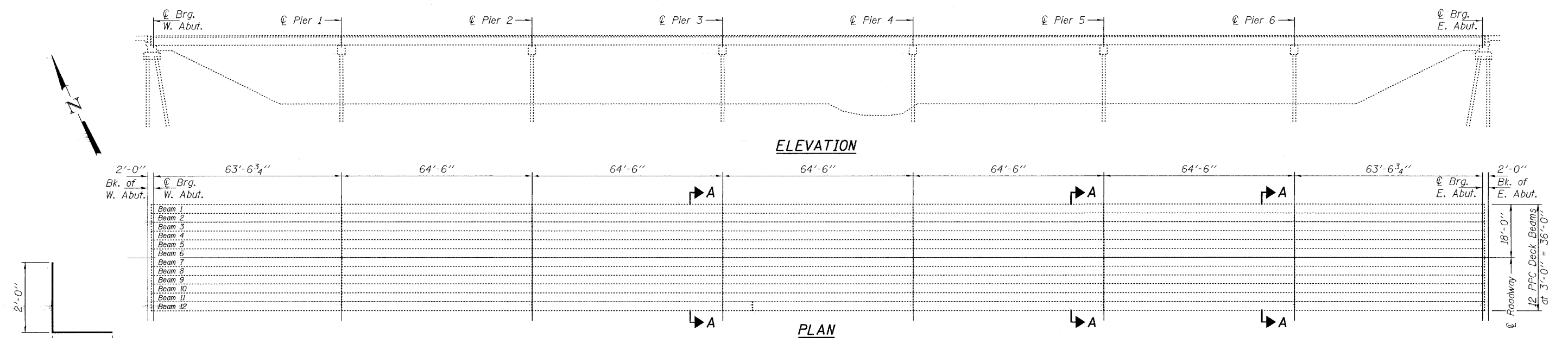
Rev.

STATE OF ILLINOIS  
DEPARTMENT OF TRANSPORTATION

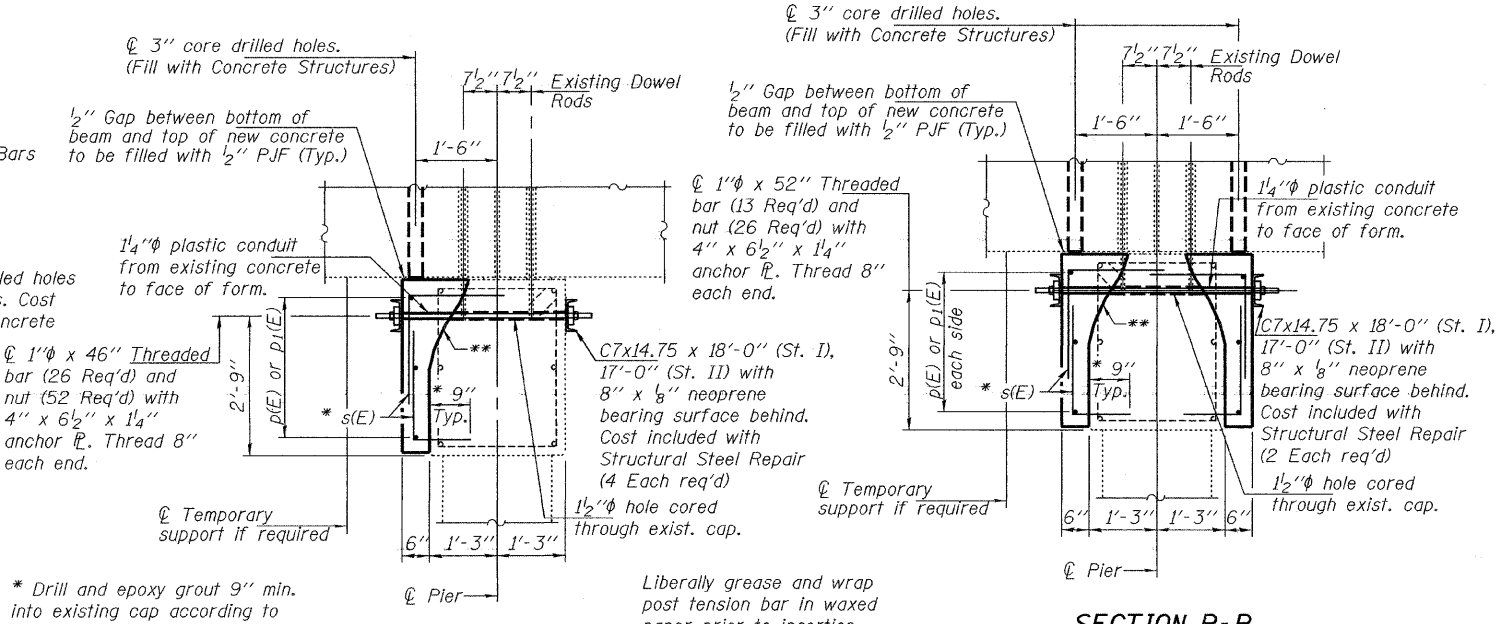
\* D7 Bridge Repair 2009-1

ROUTE NO.	SECTION	COUNTY	TOTAL SHEETS	SHEET NO.	SHEET NO. 1 1 SHEETS
FAP 327	*	Lawrence	6	4	
FED. ROAD DIST. NO. 7	ILLINOIS	FED. AID PROJECT-			

Contract Number: 74347



**SECTION A-A**  
Stage I traffic control shall remain in place until Stage I concrete has cured.  
Stage II traffic control shall remain in place until Stage II concrete has cured.



\* Drill and epoxy grout 9" min. into existing cap according to Article 584 of the Standard Specifications. Trim leg to maintain minimum clearance. Cost included with Reinforcement Bars, Epoxy Coated.

**SECTION B-B**  
(Piers 3 & 5)

**SECTION B-B**  
(Pier 6)

**GENERAL NOTES**

The Contractor shall use extreme care during concrete removal so as not to damage the PPC Deck beams.  
Existing exposed reinforcement shall be cleaned, straightened and incorporated into the new construction.  
Any reinforcement bars that are damaged during concrete removal shall be replaced with an approved bar splicer or anchorage system. Cost shall be included with Concrete Structures.  
Plan dimensions and details relative to existing plans are subject to routine variations. The Contractor shall field verify existing dimensions and details affecting new construction and make necessary approved adjustments prior to construction or ordering of materials. Such variations shall not be cause for additional compensation for a change in scope of the work, however, the Contractor will be paid for the quantity actually furnished based upon the unit price bid for the work.  
Reinforcement bars shall conform to the requirements of ASTM A 706 Gr 60 (IL Modified).  
Reinforcement bars designated (E) shall be epoxy coated.  
Self consolidating concrete shall be used throughout. See Special Provisions.

**TOTAL BILL OF MATERIAL**

Bar	No.	Size	Length	Shape
p(E)	12	#4	21'-6"	
p1(E)	12	#4	17'-4"	
s(E)	304	#4	3'-9"	L
Structural Steel Repair	Pound			3630
Concrete Structures	Cu. Yd.			9.2
Reinforcement Bars, Epoxy Coated	Pound			1240

**PIER CAP REPAIR DETAILS**  
**FAP 327 OVER ALLISON DITCH**  
**LAWRENCE COUNTY**  
**SN 051-0024**

DESIGNED: *Vickie A. Veliz*  
CHECKED: *Dennis A. Baliva*  
DRAWN: *baliva*  
CHECKED: *VHV*

SEPTEMBER 9, 2008  
EXAMINED: *Carl...*  
PASSED: *Rachel E. Anderson*



Expires: November 30, 2008

STATE OF ILLINOIS  
DEPARTMENT OF TRANSPORTATION

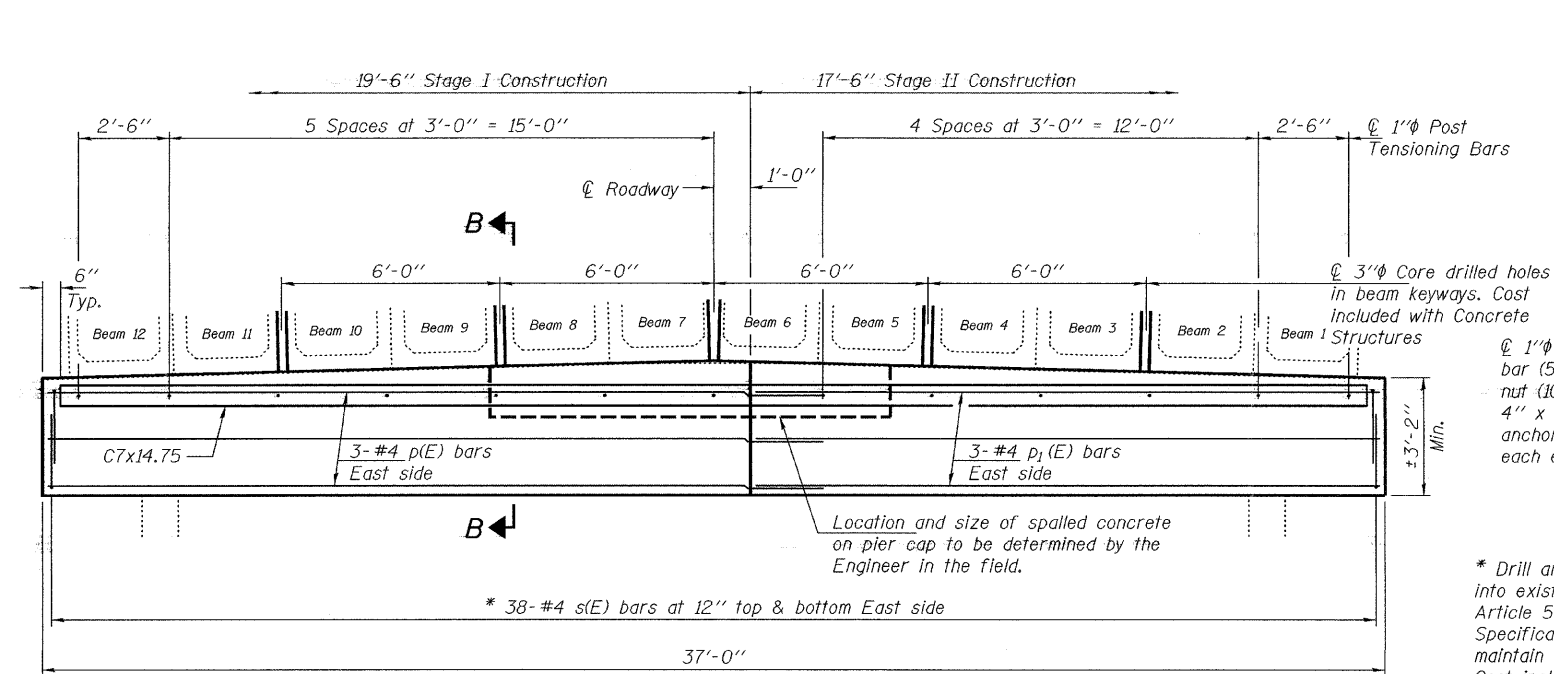
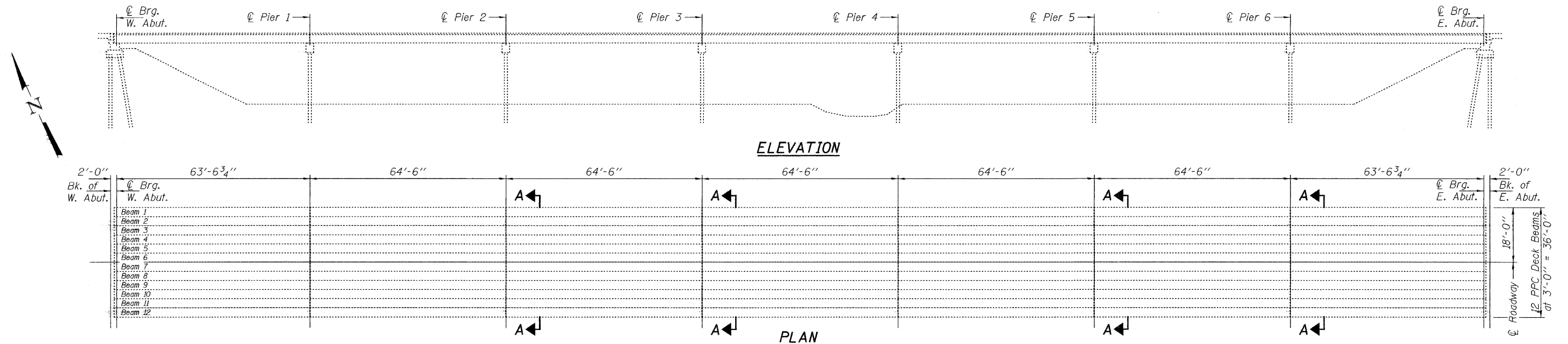
\* DT Bridge Repair 2009-1

ROUTE NO.	SECTION	COUNTY	TOTAL SHEETS	SHEET NO.
FAP 327	*	Lawrence	6	5
FED. ROAD DIST. NO. 7		ILLINOIS	FED. AID PROJECT-	

SHEET NO. 1

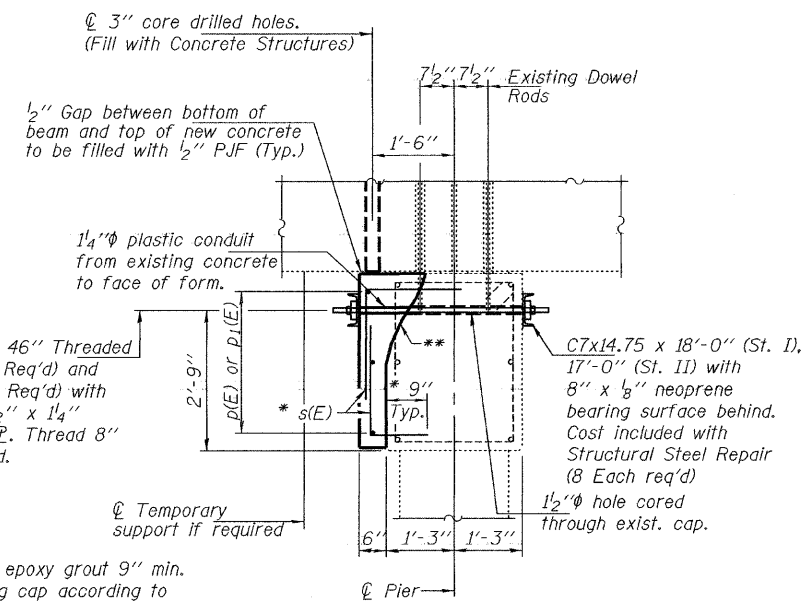
1 SHEETS

Contract Number: 74347



SECTION A-A

Stage I traffic control shall remain in place until Stage I concrete has cured.  
Stage II traffic control shall remain in place until Stage II concrete has cured.



SECTION B-B

\* Drill and epoxy grout 9" min. into existing cap according to Article 584 of the Standard Specifications. Trim leg to maintain minimum clearance. Cost included with Reinforcement Bars, Epoxy Coated.

TOTAL BILL OF MATERIAL

Bar	No.	Size	Length	Shape
p(E)	12	#4	21'-6"	
p1(E)	12	#4	17'-4"	
s(E)	304	#4	3'-9"	L
Structural Steel Repair		Pound		4820
Concrete Structures		Cu. Yd.		9.1
Reinforcement Bars, Epoxy Coated		Pound		1240

GENERAL NOTES

The Contractor shall use extreme care during concrete removal so as not to damage the PPC Deck beams.  
Existing exposed reinforcement shall be cleaned, straightened and incorporated into the new construction.  
Any reinforcement bars that are damaged during concrete removal shall be replaced with an approved bar splicer or anchorage system. Cost shall be included with Concrete Structures.  
Plan dimensions and details relative to existing plans are subject to routine variations. The Contractor shall field verify existing dimensions and details affecting new construction and make necessary approved adjustments prior to construction or ordering of materials. Such variations shall not be cause for additional compensation for a change in scope of the work, however, the Contractor will be paid for the quantity actually furnished based upon the unit price bid for the work.  
Reinforcement bars shall conform to the requirements of ASTM A 706 Gr 60 (IL Modified).  
Reinforcement bars designated (E) shall be epoxy coated.  
Self consolidating concrete shall be used throughout. See Special Provisions.

\*\* To ensure stability of the existing beams, the removal shall not go deeper than the existing dowel rods. Cost included with Concrete Structures.

DESIGNED	Vicor H. Veliz
CHECKED	Ramin A. Balin
DRAWN	baliva
CHECKED	VHV

EXAMINED	SEPTEMBER 9, 2008
PASSED	ENGINEER OF STRUCTURAL SERVICES
	ENGINEER OF BRIDGES AND STRUCTURES



Expires: November 30, 2008

PIER CAP REPAIR DETAILS  
FAP 327 OVER ALLISON DITCH  
LAWRENCE COUNTY  
SN 051-0025

STATE OF ILLINOIS  
DEPARTMENT OF TRANSPORTATION

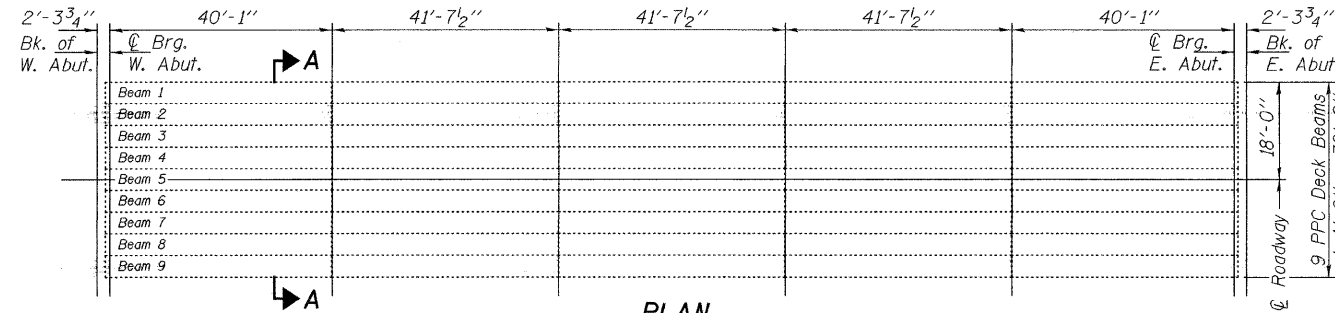
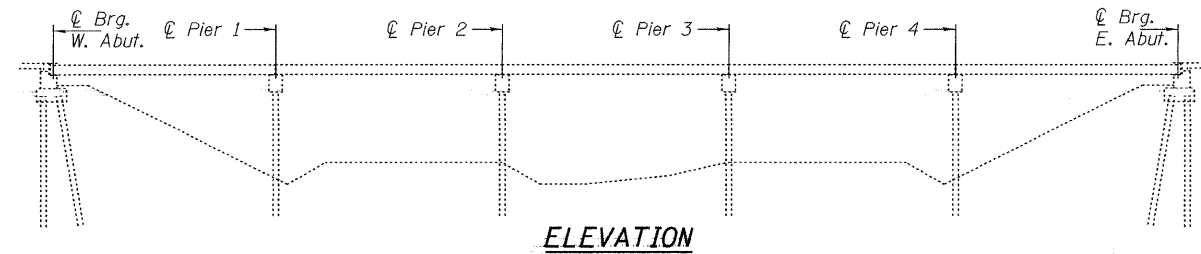
\* DT Bridge Repair 2009-1

ROUTE NO.	SECTION	COUNTY	TOTAL SHEETS	SHEET NO.	SHEET NO. 1 1 SHEETS
FAP 327	*	Lawrence	6	6	
FED. ROAD DIST. NO. 7	ILLINOIS	FED. AID PROJECT-			

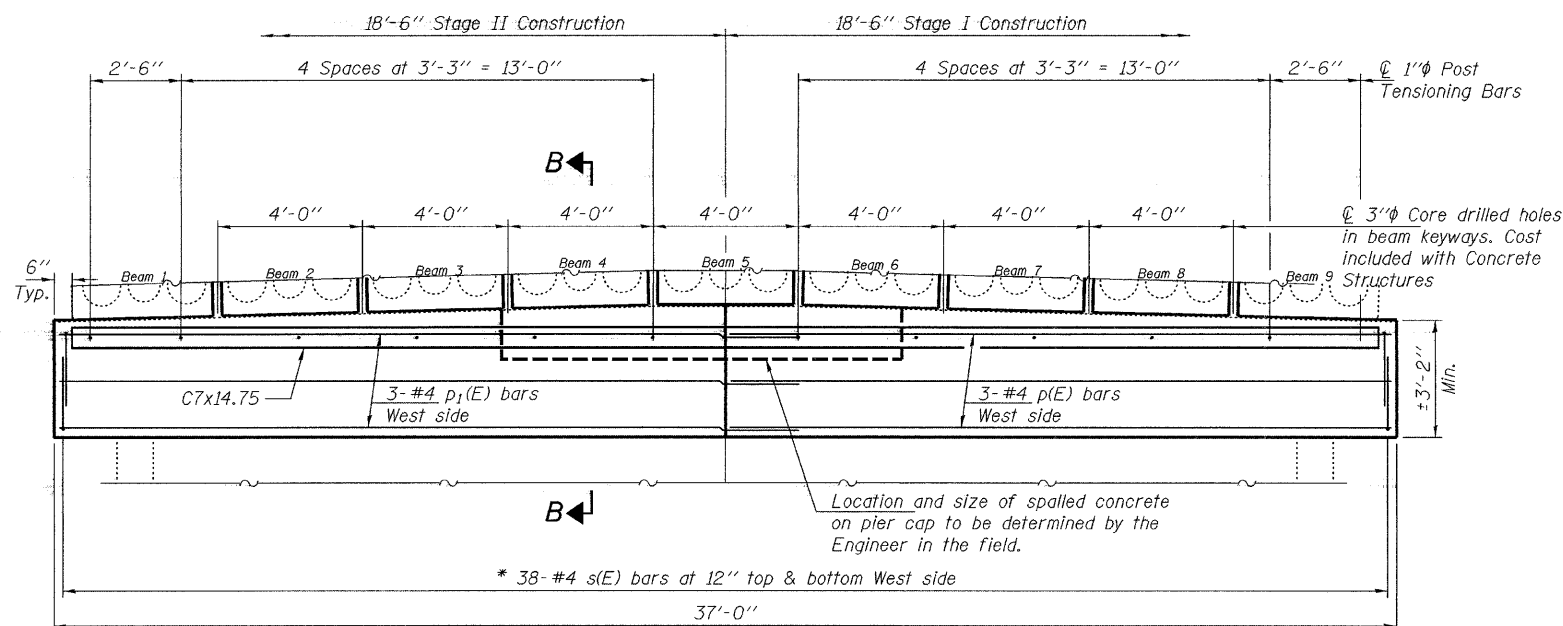
Contract Number: 74347

**GENERAL NOTES**

The Contractor shall use extreme care during concrete removal so as not to damage the PPC Deck beams.  
Existing exposed reinforcement shall be cleaned, straightened and incorporated into the new construction.  
Any reinforcement bars that are damaged during concrete removal shall be replaced with an approved bar splicer or anchorage system. Cost shall be included with Concrete Structures.  
Plan dimensions and details relative to existing plans are subject to routine variations. The Contractor shall field verify existing dimensions and details affecting new construction and make necessary approved adjustments prior to construction or ordering of materials. Such variations shall not be cause for additional compensation for a change in scope of the work, however, the Contractor will be paid for the quantity actually furnished based upon the unit price bid for the work.  
Reinforcement bars shall conform to the requirements of ASTM A 706 Gr 60 (IL Modified).  
Reinforcement bars designated (E) shall be epoxy coated.  
Self consolidating concrete shall be used throughout. See Special Provisions.

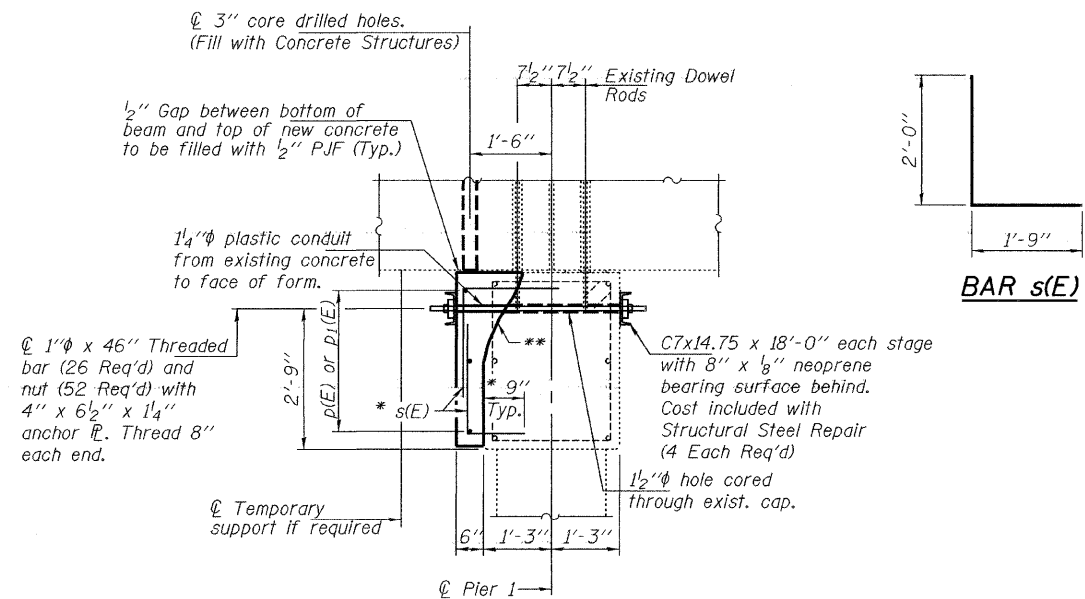


**PLAN**  
(SN 051-0028 shown, SN 51-0029 similar)



**SECTION A-A**

Stage I traffic control shall remain in place until Stage I concrete has cured.  
Stage II traffic control shall remain in place until Stage II concrete has cured.



**SECTION B-B**

\* Drill and epoxy grout 9" min. into existing cap according to Article 584 of the Standard Specifications. Trim leg to maintain minimum clearance. Cost included with Reinforcement Bars, Epoxy Coated.

**TOTAL BILL OF MATERIAL**

Bar	No.	Size	Length	Shape
p(E)	6	#4	20'-6"	—
p1(E)	6	#4	18'-4"	—
s(E)	152	#4	3'-9"	L
Structural Steel Repair		Pound	2410	
Concrete Structures		Cu. Yd.	4.7	
Reinforcement Bars, Epoxy Coated		Pound	540	

**PIER CAP REPAIR DETAILS**  
**FAP 327 OVER ALLISON DITCH**  
**LAWRENCE COUNTY**  
**SN 051-0028 & 0029**

DESIGNED	Victor H. Veliz
CHECKED	Ramin A. Fakhri
DRAWN	baliva
CHECKED	VHV DR

EXAMINED	SEPTEMBER 9, 2008
PASSED	SEPTEMBER 9, 2008



\*\* To ensure stability of the existing beams, the removal shall not go deeper than the existing dowel rods. Cost included with Concrete Structures.

Expires: November 30, 2008