

F.A.P. RTE.	SECTION	COUNTY	TOTAL SHEETS	SHEET NO.
609	...	ST. CLAIR	350	1

***76RS-3, 76-2BR-21

INDEX OF SHEETS

SHEET NO.	DESCRIPTION
1	COVER SHEET
2 - 3	GENERAL NOTES AND STANDARDS
4 - 6	SUMMARY OF QUANTITIES
7 - 12	TYPICAL SECTIONS
13 - 23	SCHEDULE OF QUANTITIES
24 - 29	ALIGNMENT, TIES, AND BENCHMARKS
30 - 36	REMOVAL & ADJUSTMENT PLANS
37 - 49	PLAN & PROFILES
50 - 56	SUGGESTED STAGES OF CONSTRUCTION AND TRAFFIC CONTROL SHEETS
57 - 58	STORM WATER POLLUTION PREVENTION PLAN
59 - 68	EROSION CONTROL PLANS
69 - 71	DRAINAGE PLANS & PROFILES
72 - 96	RIGHT-OF-WAY SHEETS
97 - 103	INTERSECTION DETAILS
104 - 109	PAVEMENT STRIPING PLANS
110 - 120	DRAINAGE DETAILS
121 - 123	ENTRANCE DETAILS
124 - 125	BUTT JOINT DETAILS
126 - 127	SCOUR MITIGATION SHEETS
128 - 261	CROSS SECTIONS
262 - 339	STAGING CROSS SECTIONS
340 - 350	CROSS SECTIONS SCOUR MITIGATION

STATE OF ILLINOIS
 DEPARTMENT OF TRANSPORTATION
 DIVISION OF HIGHWAYS

PROPOSED HIGHWAY PLANS

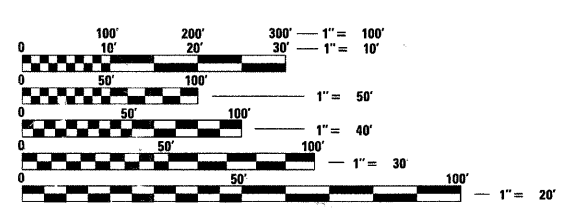
FAP ROUTE 609 (IL RTE 163)
 SECTION 76RS-3, 76-2BR-21
 PROJECT **TASK 09-24-01**
 ST. CLAIR COUNTY

C-98-006-07

STANDARDS
 SEE SHEET NO. 2

UTILITIES
 SEE SHEET NO. 2

MICROFILMED _____
 REEL NUMBER _____
 AWARDED _____
 RESIDENT ENGINEER _____
 AS BUILT CHANGES WERE MADE
 ON THE FOLLOWING SHEETS



FULL SIZE PLANS HAVE BEEN PREPARED USING STANDARD ENGINEERING SCALES. REDUCED SIZED PLANS WILL NOT CONFORM TO STANDARD SCALES. IN MAKING MEASUREMENTS ON REDUCED PLANS, THE ABOVE SCALES MAY BE USED.

J.U.L.I.E.
 JOINT UTILITY LOCATION INFORMATION FOR EXCAVATION
 1-800-892-0123

CONTRACT NO. 76A34
 TO V.I.P.: MILLSTADT / STOOKEY

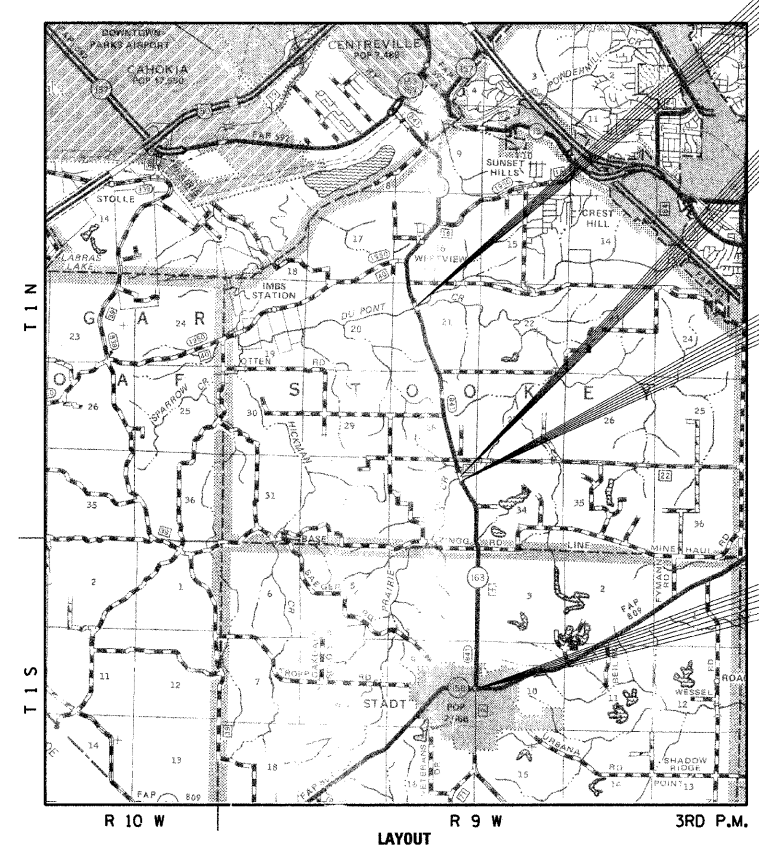
RURAL MINOR ARTERIAL / URBAN MINOR ARTERIAL
 ADT = 4000 % TRUCK 6

NET LENGTH OF PROJECT = 12,626.00 FEET = 2.391 MILES
 GROSS LENGTH = 2.391 MILES

D98-105-99



LOCATION OF SECTION INDICATED THIS: - [black bar] -

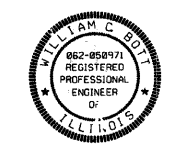


STA. 245+52.24
 SECTION 76-2BR-21
 SN 082-0104
 FOR SCOUR MITIGATION

STA. 138+66.06 SN 082-0305
 BRIDGE DESCRIPTION:
 SINGLE SPAN PRECAST, PRESTRESSED
 CONCRETE I-BEAM STRUCTURE WITH
 CONCRETE SPILL-THRU ABUTMENTS.
 (FOR INFORMATION ONLY)

END PROJECT
 SECTION 76RS-3
 STA. 136+00.00

BEGIN PROJECT
 SECTION 76RS-3
 STA. 9+74.00



SIGNED: *William C. Bott* DATE: 8/8/08

EXPIRES: 11/30/09

STATE OF ILLINOIS
 DEPARTMENT OF TRANSPORTATION
 DIVISION OF HIGHWAYS

SUBMITTED Aug 14, 2008
May C. Lamin
 DEPUTY DIRECTOR OF HIGHWAYS
 REGION FIVE ENGINEER

October 3, 2008
Eric E. Harman
 ENGINEER OF DESIGN AND ENVIRONMENT

October 3, 2008
Christina M. Reed
 DIRECTOR, DIVISION OF HIGHWAYS

PRINTED BY THE AUTHORITY
 OF THE STATE OF ILLINOIS

REVISION	DATE	BY	PLANS PREPARED BY:	COMPUTER FILE NO.
DOT REVIEW	3/17/08	WCB/MDS	GREEN RADFORD, INC.	COVER.VB
				PROJECT: 0076
				9/28/07-MDS

PROJECT ENGINEER: PATTI LEBEAU 1-618-346-3179
 SQUAD LEADER: CHERYL KEPLAR 1-618-346-3186

Rev. 10-20-08