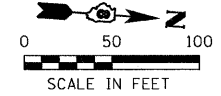


GARY R. & MADONNA L. STAFF

GARY R. & MADONNA L. STAFF

LYLE O. & GLENN O. HAAS

F.A.P. RTE.	SECTION	COUNTY	TOTAL SHEETS	SHEET NO.
609	...	ST. CLAIR	350	44
STA. 86+00		TO STA. 101+00		
FED. ROAD DIST. NO.	ILLINOIS	FED. AID PROJECT		
... 76RS-3, 76-2BR-21				



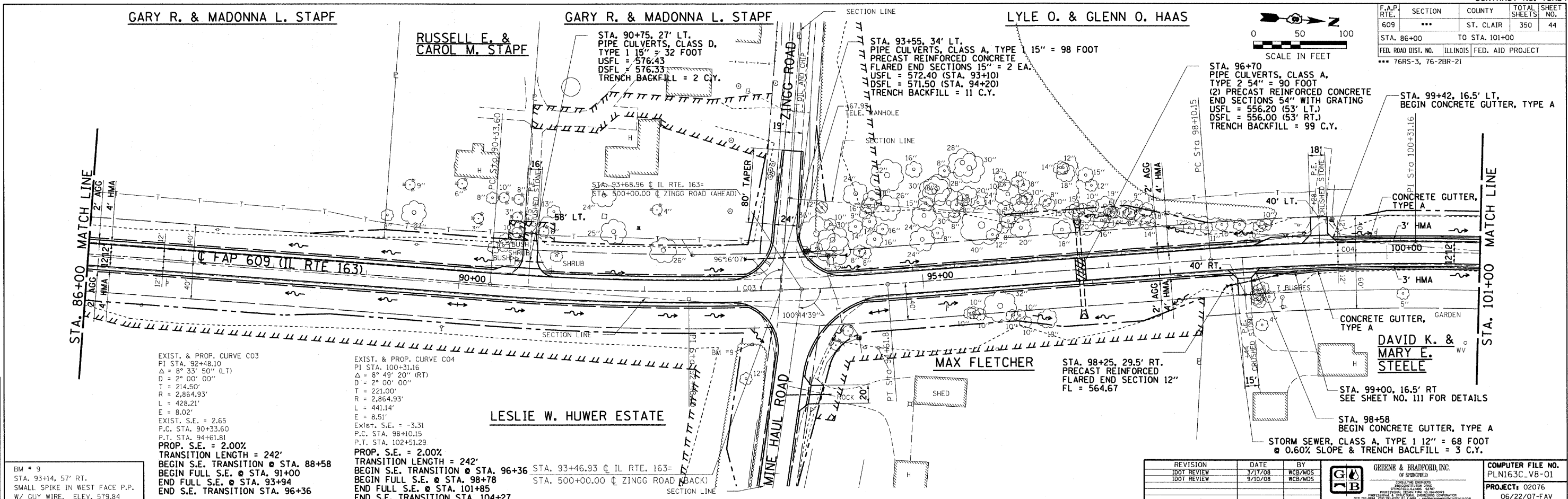
DESIGN	INT.	DATE	REASON

PLAN	DATE

PLOTS & CHECKS	INT.	DATE	NO.	REASON

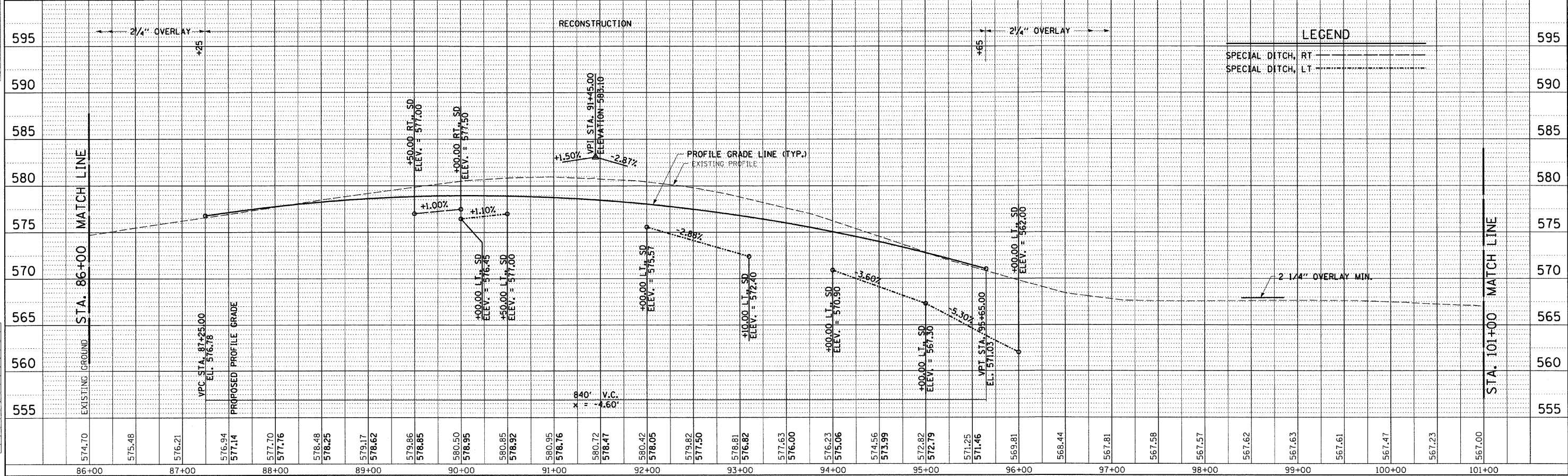
PROFILE	DATE

CHECKS	INT.	DATE	REASON



EXIST. & PROP. CURVE C03
 PI STA. 92+48.10
 $\Delta = 87^{\circ} 33' 50''$ (LT.)
 $D = 2^{\circ} 00' 00''$
 $T = 214.50'$
 $R = 2,864.93'$
 $L = 428.21'$
 $E = 8.02'$
 EXIST. S.E. = 2.65
 P.C. STA. 90+33.60
 P.T. STA. 94+61.81
 PROP. S.E. = 2.00%
 TRANSITION LENGTH = 242'
 BEGIN S.E. TRANSITION @ STA. 88+58
 BEGIN FULL S.E. @ STA. 91+00
 END FULL S.E. @ STA. 93+94
 END S.E. TRANSITION STA. 96+36

EXIST. & PROP. CURVE C04
 PI STA. 100+31.16
 $\Delta = 8^{\circ} 49' 20''$ (RT)
 $D = 2^{\circ} 00' 00''$
 $T = 221.00'$
 $R = 2,864.93'$
 $L = 441.14'$
 $E = 8.51'$
 EXIST. S.E. = -3.31
 P.C. STA. 98+10.15
 P.T. STA. 102+51.29
 PROP. S.E. = 2.00%
 TRANSITION LENGTH = 242'
 BEGIN S.E. TRANSITION @ STA. 96+36
 BEGIN FULL S.E. @ STA. 98+78
 END FULL S.E. @ STA. 101+85
 END S.E. TRANSITION STA. 104+27



REVISION	DATE	BY	COMPUTER FILE NO.
IDOT REVIEW	3/17/08	WCB/MOS	PLN163C_V8-01
IDOT REVIEW	9/10/08	WCB/MOS	PROJECT: 02076
			06/22/07-FAV

LEGEND

- SPECIAL DITCH, RT
- SPECIAL DITCH, LT