

F.A. RTE.	SECTION	COUNTY	TOTAL SHEETS	SHEET NO.
609	***	ST. CLAIR	350	38

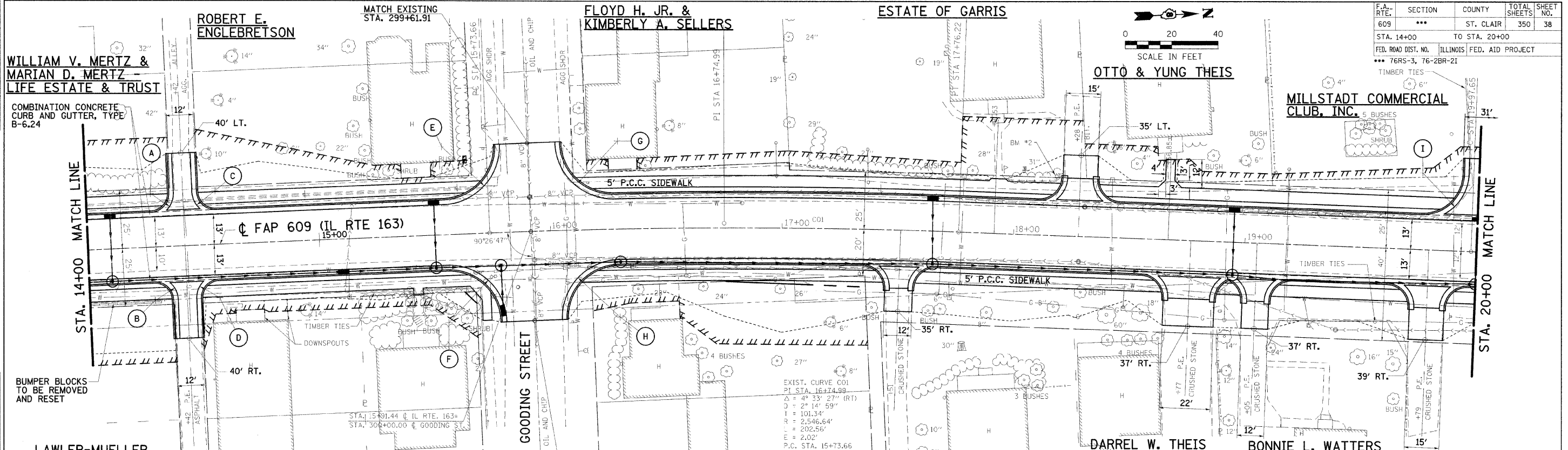
STA. 14+00 TO STA. 20+00
 FED. ROAD DIST. NO. ILLINOIS FED. AID PROJECT
 *** 76RS-3, 76-2BR-21

DESIGN	INT.	DATE	REASON

PLAN	DATE	BY	REASON

PROFILE	DATE	BY	REASON

CHECKS	INT.	DATE	REASON



EXIST. CURVE COI
 PI STA. 16+74.99
 $\Delta = 4^\circ 33' 27''$ (RT)
 $D = 2^\circ 14' 59''$ (RT)
 $I = 101.34'$
 $R = 2,546.64'$
 $E = 202.56'$
 $E = 2.02'$
 P.C. STA. 15+73.66
 P.I. STA. 17+76.22
 EXIST. S.E. = N.C.
 PROP. S.E. = N.C.

REVISION	DATE	BY

GREENE & BRADFORD, INC.
 OF SPRINGFIELD
 PROFESSIONAL ENGINEERING
 LICENSE NO. 011-000001
 PROJECT: 02076
 01/02/08-MDS

630			A STA. 14+27.84, 23.00' LT, R=10'	D STA. 14+56.03, 23.00' RT, R=10'	G STA. 16+29.66, 38.00' LT, R=25'		630
625			B STA. 14+28.03, 23.00' RT, R=10'	E STA. 15+54.41, 38.00' LT, R=25'	H STA. 16+29.31, 38.00' RT, R=25'		625
620			C STA. 14+55.84, 23.00' LT, R=10'	F STA. 15+54.47, 38.00' LT, R=25'	I STA. 19+75.57, 33.00' LT, R=20'		620
615							615
610							610
605							605
600							600
595							595
590							590