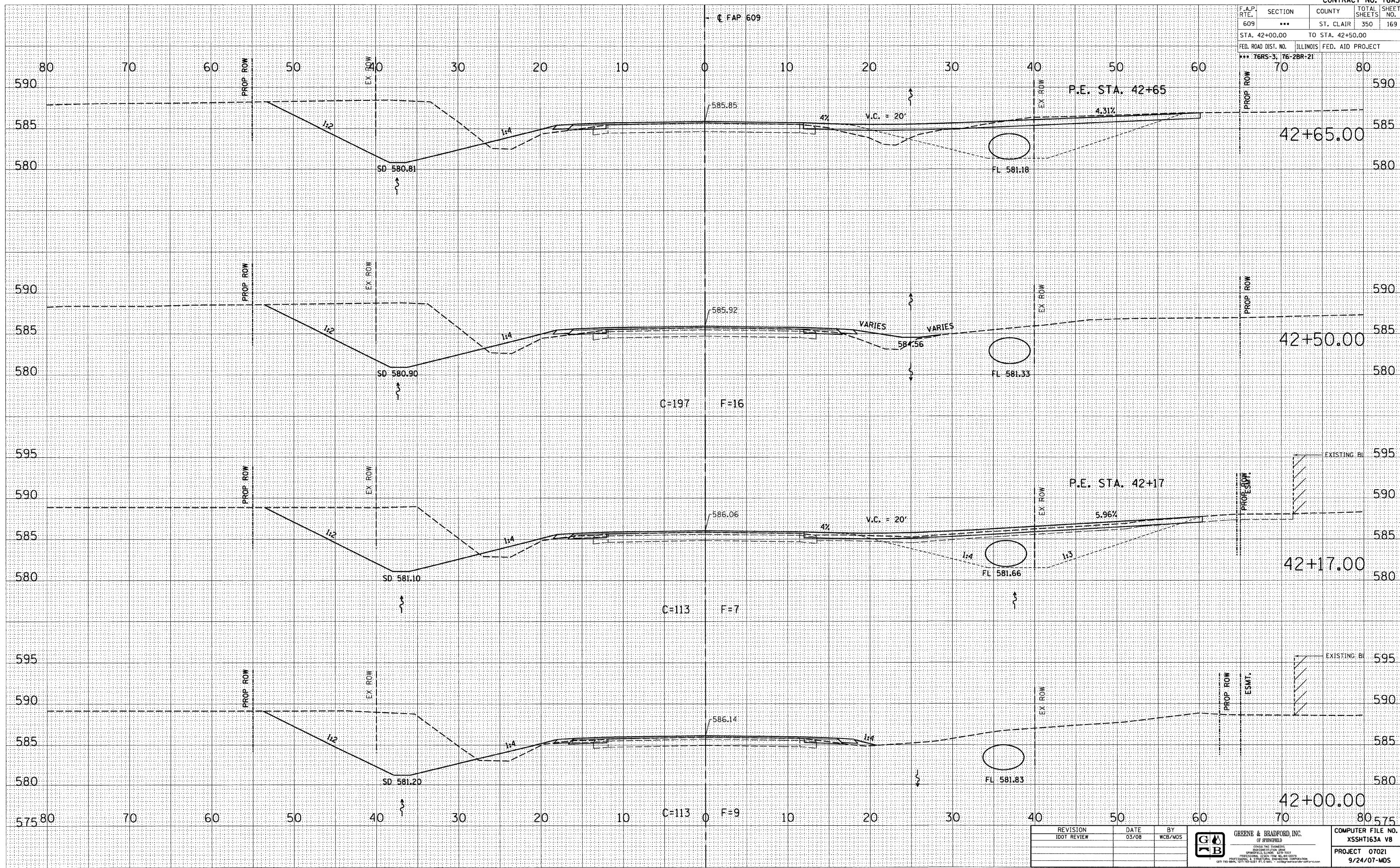


F.A.P. RTE.	SECTION	COUNTY	TOTAL SHEETS	SHEET NO.
609	...	ST. CLAIR	350	169
STA. 42+00.00		TO STA. 42+50.00		
FED. ROAD DIST. NO.		ILLINOIS FED. AID PROJECT		
*** 76RS-3, 76-2BR-21				

DATE	
BY	
FINAL SURVEY	
EXEMPTED	
PLOTTED	
TEMPLATE	
NOTE BOOK	
AREAS CHECKED	
NO.	

DATE	
BY	
ORIGINAL SURVEY	
EXEMPTED	
PLOTTED	
TEMPLATE	
NOTE BOOK	
AREAS CHECKED	
NO.	

PLOT DATE : 8/5/2008 10:41:13 AM  
 PLOT SCALE : 1" = 20'  
 MODEL : Default  
 OPERATOR : marks



REVISION	DATE	BY
IDOT REVIEW	03/08	WCB/MDS



COMPUTER FILE NO. XSSHT163A V8  
 PROJECT 07021  
 9/24/07-MDS

**MAINLINE CROSS SECTIONS - FAP 609 (IL RTE. 163) ST. CLAIR COUNTY  
 STA. 42+00.00 TO STA. 42+50.00**