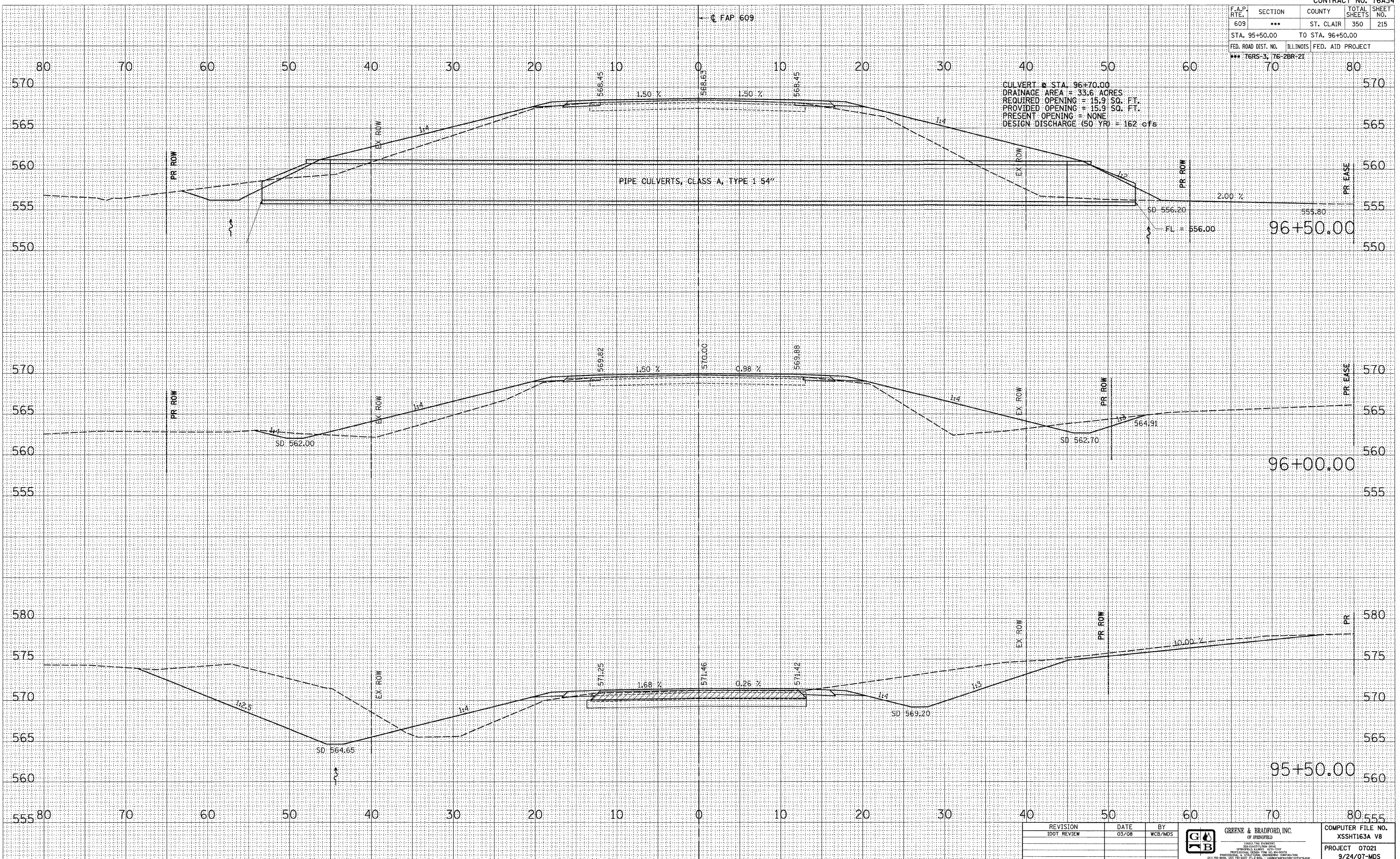


F.A.P. RTE.	SECTION	COUNTY	TOTAL SHEETS	SHEET NO.
609	***	ST. CLAIR	350	215
STA. 95+50.00		TO STA. 96+50.00		
FED. ROAD DIST. NO.		ILLINOIS FED. AID PROJECT		
*** 76RS-3, 76-2BR-21				

DATE	BY
NO.	NO.
AREAS CHECKED	AREAS CHECKED
NOTE BOOK	NOTE BOOK
PLOTTED	PLOTTED
SURVEYED	SURVEYED
FINAL SURVEY	FINAL SURVEY

DATE	BY
NO.	NO.
AREAS CHECKED	AREAS CHECKED
NOTE BOOK	NOTE BOOK
PLOTTED	PLOTTED
SURVEYED	SURVEYED
ORIGINAL SURVEY	ORIGINAL SURVEY

PLOT DATE = 8/1/2008 4:26:39 PM  
 FILE NAME = J:\02076\DRAWINGS\XSSHT163A.VB  
 PLOT SCALE = 5/8" = 1' / IN.  
 MODEL = Default  
 OPERATOR = mcb



REVISION	DATE	BY
	03/08	WCB/MDS



COMPUTER FILE NO.  
 XSSHT163A V8  
 PROJECT 07021  
 9/24/07-MDS

**MAINLINE CROSS SECTIONS - FAP 609 (IL RTE. 163) ST. CLAIR COUNTY**  
**STA. 95+50.00 TO STA. 96+50.00**