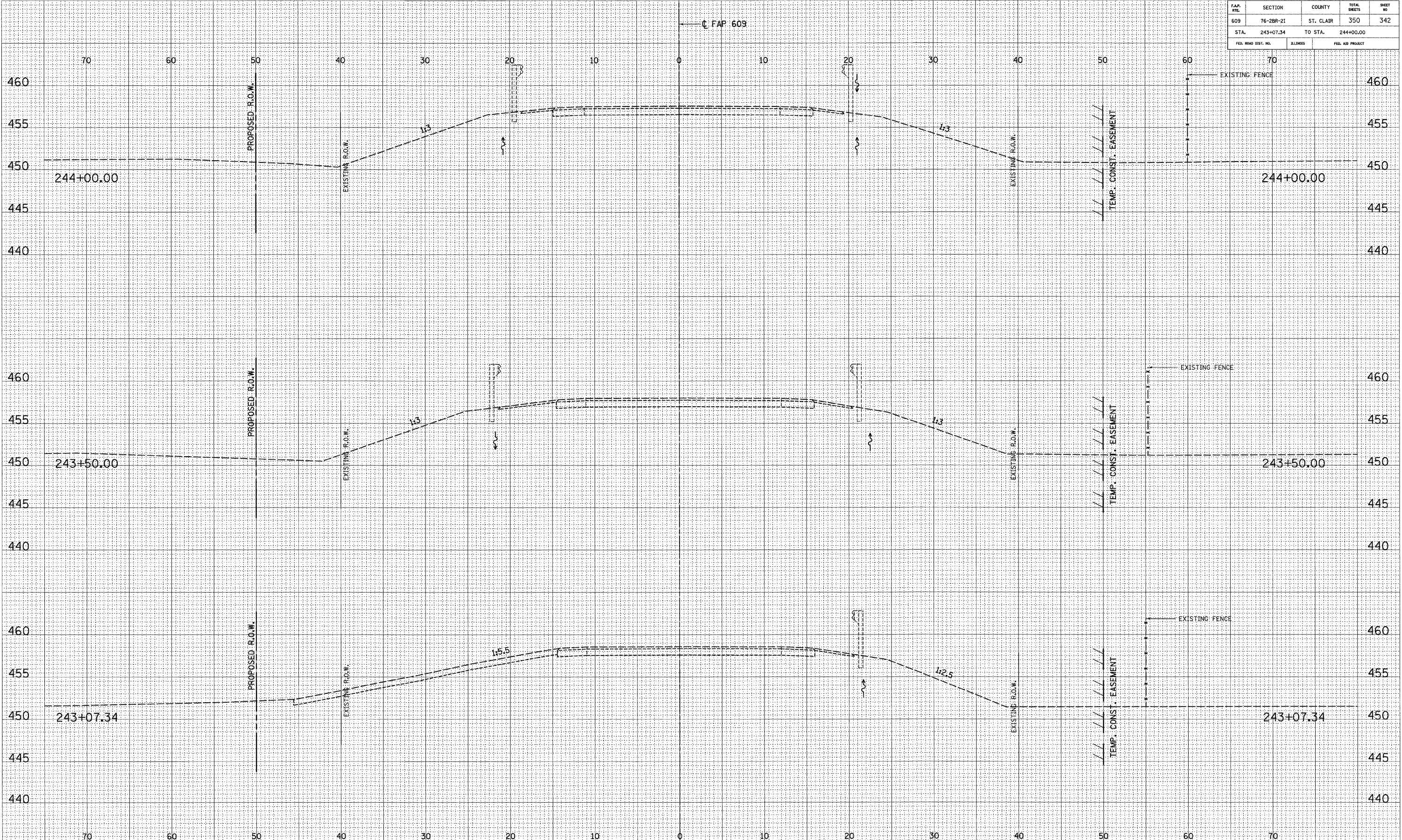


F.A.P. RTE.	SECTION	COUNTY	TOTAL SHEETS	SHEET NO.
609	76-2BR-21	ST. CLAIR	350	342
STA. 243+07.34		TO STA. 244+00.00		
FED. ROAD DIST. NO.	ILLINOIS	FED. AID PROJECT		



DATE	
BY	
ORIGINAL SURVEY	
PLOTTED	
NOTE BOOK	
AREAS CHECKED	
NO.	

DATE	
BY	
ORIGINAL SURVEY	
PLOTTED	
NOTE BOOK	
AREAS CHECKED	
NO.	

REVISIONS	DATE	BY	 GREENE & BRADFORD, INC. CIVIL ENGINEERS PROFESSIONAL ENGINEERING FIRM 1001 PROGRESS, 600 N. STATE ST., ST. LOUIS, MO 63101	COMPUTER FILE NO.
IDOT REVIEW	03/08	WCB/MDS		XSSHT163BR.2 3
				PROJECT: 02076
				8/14/07-MML