

F.A.I. RTE.	SECTION	COUNTY	TOTAL SHEETS	SHEET NO.
64	82-1HB-HDF	ST. CLAIR	7	1
FED. ROAD DIST. NO.	ILLINOIS	CONTRACT NO. 76C25		

STATE OF ILLINOIS  
DEPARTMENT OF TRANSPORTATION  
DIVISION OF HIGHWAYS

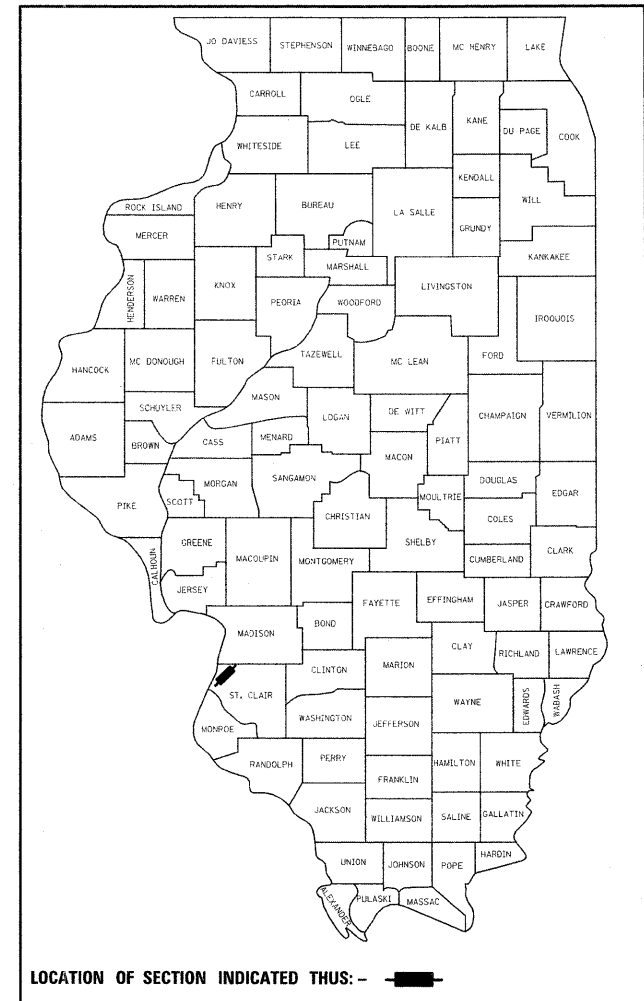
**PROPOSED  
HIGHWAY PLANS**

FAI ROUTE 64  
SECTION 82-1HB-HDF

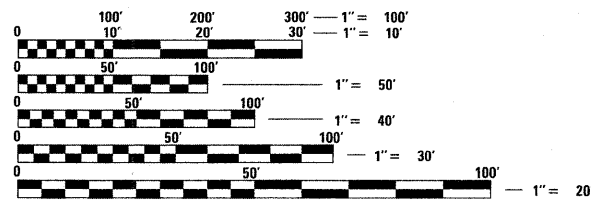
ST. CLAIR COUNTY  
C-98-098-08

FOR INDEX OF SHEETS, SEE SHEET NO. 2

D-98-105-08



LOCATION OF SECTION INDICATED THUS: - ■ -

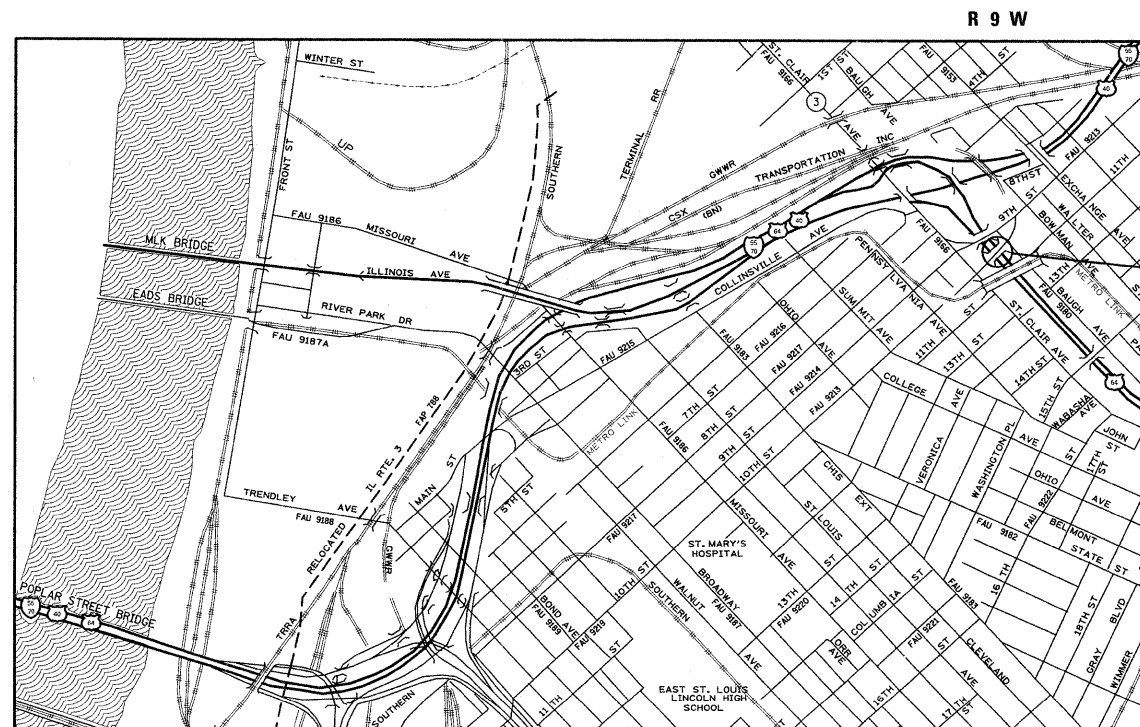


FULL SIZE PLANS HAVE BEEN PREPARED USING STANDARD ENGINEERING SCALES. REDUCED SIZED PLANS WILL NOT CONFORM TO STANDARD SCALES. IN MAKING MEASUREMENTS ON REDUCED PLANS, THE ABOVE SCALES MAY BE USED.

J.U.L.I.E.  
JOINT UTILITY LOCATION INFORMATION FOR EXCAVATION  
1-800-892-0123  
OR 811

PROJECT ENGINEER: PATTI LeBEAU (618) 346-3179  
PROJECT MANAGER: ART MUEHLFELD (618) 346-3209

CONTRACT NO. 76C25

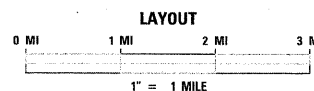


BEAM HEAT STRAIGHTENING  
ON STRUCTURE CARRYING  
10TH STREET OVER I-64  
SN 082-0150

10TH STREET  
ADT = 1650 (2008)  
ADT = 1900 (2028)  
SU = 5.5%  
MU = 3.0%

I-64 (EB ONLY)  
ADT = 32300 (2008)  
ADT = 39400 (2028)  
SU = 2.4%  
MU = 10.2%

DESIGN DESIGNATION  
NA



LATITUDE = 38.63080  
LONGITUDE = 90.14222

STATE OF ILLINOIS  
DEPARTMENT OF TRANSPORTATION  
DIVISION OF HIGHWAYS

SUBMITTED August 12 20 2008

*Mary C Jamie*  
DEPUTY DIRECTOR OF HIGHWAYS, REGION 5 ENGINEER

October 3, 20 08

*Eric E. Hamm*  
ENGINEER OF DESIGN AND ENVIRONMENT

October 3, 20 08

*Christine M. Reed*  
DIRECTOR OF HIGHWAYS, CHIEF ENGINEER

**PRINTED BY THE AUTHORITY  
OF THE STATE OF ILLINOIS**