

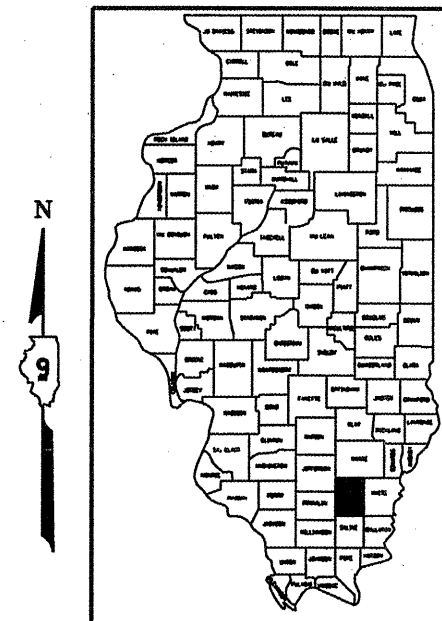
STATE OF ILLINOIS  
 DEPARTMENT OF TRANSPORTATION  
 DIVISION OF HIGHWAYS

**PROPOSED  
 HIGHWAY PLANS  
 DISTRICT NINE**

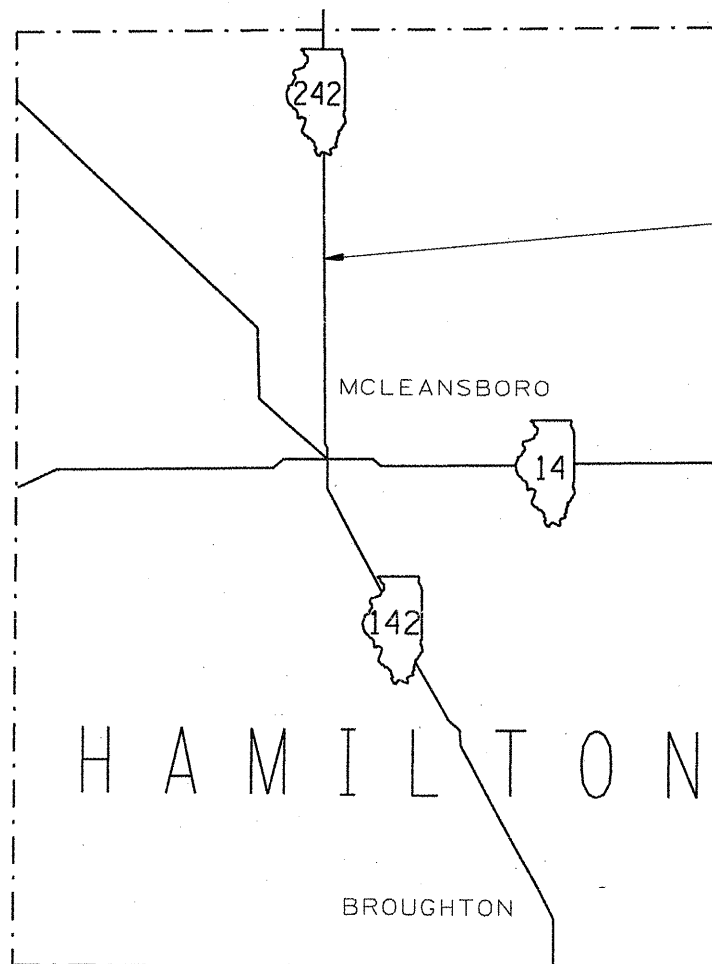
FA ROUTE 776 (IL 242)  
 SECTION D9 DECK BEAM SUPPORT FY 09-1  
 C99-002-09  
 HAMILTON COUNTY

ROUTE NO.	SECTION	COUNTY	TOTAL SHEETS	SHEET NO.
FAP 776	•	HAMILTON	4	1
FED. ROAD DIST. NO. 7		SUBNOV	FED. AID PROJECT	

\*D9 DECK BEAM SUPPORT FY 09-1  
 CONTRACT NO. 78092



033-0029  
 IL 242  
 BIG CREEK  
 INVENTORY RATING HS 10.8  
 OPERATING RATING HS 18.0  
 ADT: 1300  
 16% TRUCKS



IMPROVEMENT LOCATION  
 S. N. 033-0029  
 INSTALL STEEL SUPPORT BEAMS

PROJECT ENGINEER: CASEY N. TECKENBROCK PHONE: (618) 549-2171  
 SQUAD LEADER: RITA GAUTNEY CENTREX: 782-4554

PLAN DRAWINGS ARE NOT TO SCALE.

J.U.L.I.E.  
 JOINT UTILITY LOCATION INFORMATION FOR EXCAVATION  
 1-800-892-0123

MAP NOT TO SCALE

STATE OF ILLINOIS  
 DEPARTMENT OF TRANSPORTATION  
 DIVISION OF HIGHWAYS

SUBMITTED: Aug 13 08  
*Max Palmer*  
 DEPUTY DIRECTOR OF HIGHWAYS, REGION ENGINEER

October 3 20 08  
*Eric E. Horn*  
 ENGINEER OF DESIGN AND ENVIRONMENT

October 3 20 08  
*Christine M. Reed*  
 DIRECTOR OF HIGHWAYS, CHIEF ENGINEER

PRINTED BY THE AUTHORITY  
 OF THE STATE OF ILLINOIS

CONTRACT NO. 78092

STATE OF ILLINOIS  
DEPARTMENT OF TRANSPORTATION

ROUTE NO. FAP 776	SECTION •	COUNTY HAMILTON	TOTAL SHEETS 4	SHEET NO. 2
FED. ROAD DIST. NO. 7		ILLINOIS	FED. AID PROJECT	
*D9 DECK BEAM SUPPORT FY 09-1 CONTRACT NO. 78092				

INDEX OF SHEETS

SHEET	DESCRIPTION
1	COVER SHEET
2	INDEX OF SHEETS, STANDARDS, SIGNATURES
3	SUMMARY OF QUANTITIES
4	PLAN AND ELEVATION

STANDARDS

701201-02	LANE CLOSURE, 2L, 2W, DAY ONLY, FOR SPEEDS >= 45 MPH
701901	TRAFFIC CONTROL DEVICES

Prepared By:	<i>Kevin Grammer</i> DISTRICT OPERATIONS ENGINEER
Examined By:	<i>Paul S.</i> DISTRICT LAND ACQUISITION ENGINEER
Examined By:	<i>Carrie Nilsen</i> DISTRICT PROGRAM DEVELOPMENT ENGINEER
Examined By:	<i>Joe G. Daniewicz</i> DISTRICT STUDIES & PLANS ENGINEER
Examined By:	<i>John Swathwaite</i> DISTRICT CONSTRUCTION ENGINEER
Examined By:	<i>Brian S. Ples</i> DISTRICT MATERIALS ENGINEER
Examined By:	<i>John Swathwaite</i> DISTRICT PROJECT IMPLEMENTATION ENGINEER
Examined By:	<i>Thomas L. Clayton</i> ASSISTANT REGIONAL ENGINEER
Approved By:	<i>Mark Collins</i> DEPUTY DIRECTOR OF HIGHWAYS, REGION 5 ENGINEER
DATE	Aug 13 20 08



STATE OF ILLINOIS  
DEPARTMENT OF TRANSPORTATION

**GENERAL NOTES**

All structural steel shall conform to AASHTO Classification M-270 Gr. 36, unless otherwise noted.

Plan dimensions and details relative to existing plans are subject to routine variations. The Contractor shall field verify existing dimensions and details affecting new construction and make necessary approved adjustments prior to construction or ordering of materials. Such variations shall not be cause for additional compensation for a change in scope of the work, however, the Contractor will be paid for the quantity actually furnished based upon the unit price bid for the work.

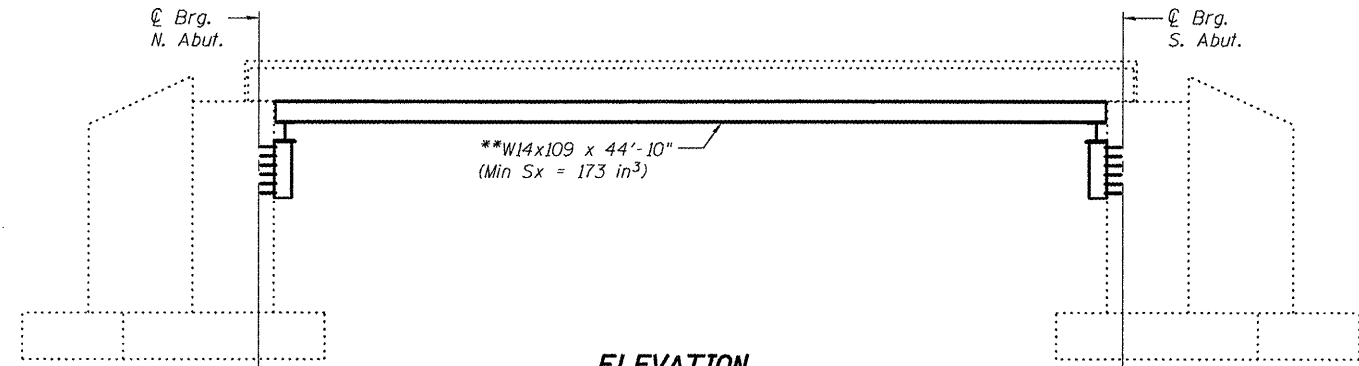
The contractor is advised that the existing PPC Deck Beams are in a deteriorated condition with reduced load carrying capacity. It is the contractor's responsibility to account for the condition of the beams when developing construction procedures.

See Section 584 of the Standard Specifications for Epoxy Grouting of Threaded Rods; Minimum embedment 9".

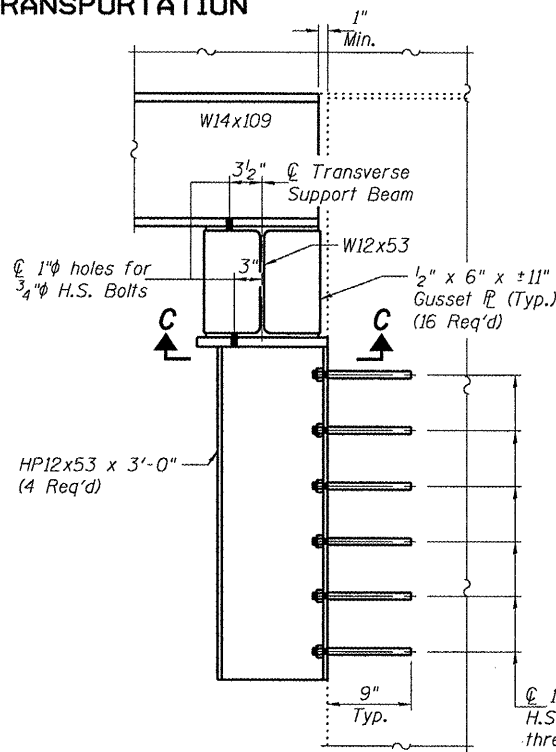
If the contractor's procedure for placement of beams involves placement of cranes or other heavy equipment on the bridge, a detailed procedure shall be submitted to the Engineer for approval. The procedure shall include calculations, prepared and sealed by an Illinois Licensed Structural Engineer, verifying that the equipment and procedure used will not overstress the existing beams. To distribute load to multiple beams and protect the existing surface, in all cases a double layer mat of heavy timbers shall be used at all times under crane tracks or wheels and any outriggers in the down position. If necessary, shims shall be used under the crane mat to ensure uniform contact with the underlying beams.

The cost of epoxy grouting threaded rods on the pier cap, abutments and beams shall be included with Furnishing and Erecting Structural Steel.

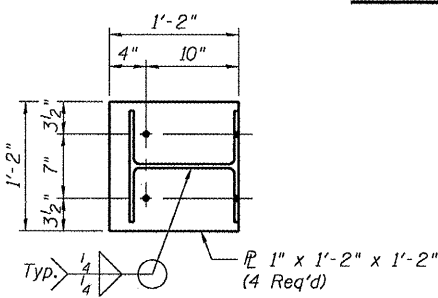
The Contractor has the option of using used steel. See Special Provisions..



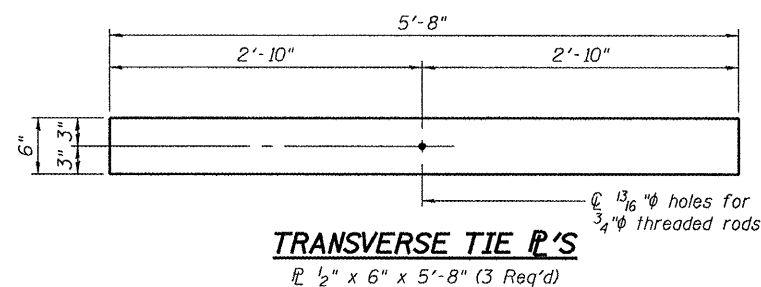
**ELEVATION**



**SECTION A-A**

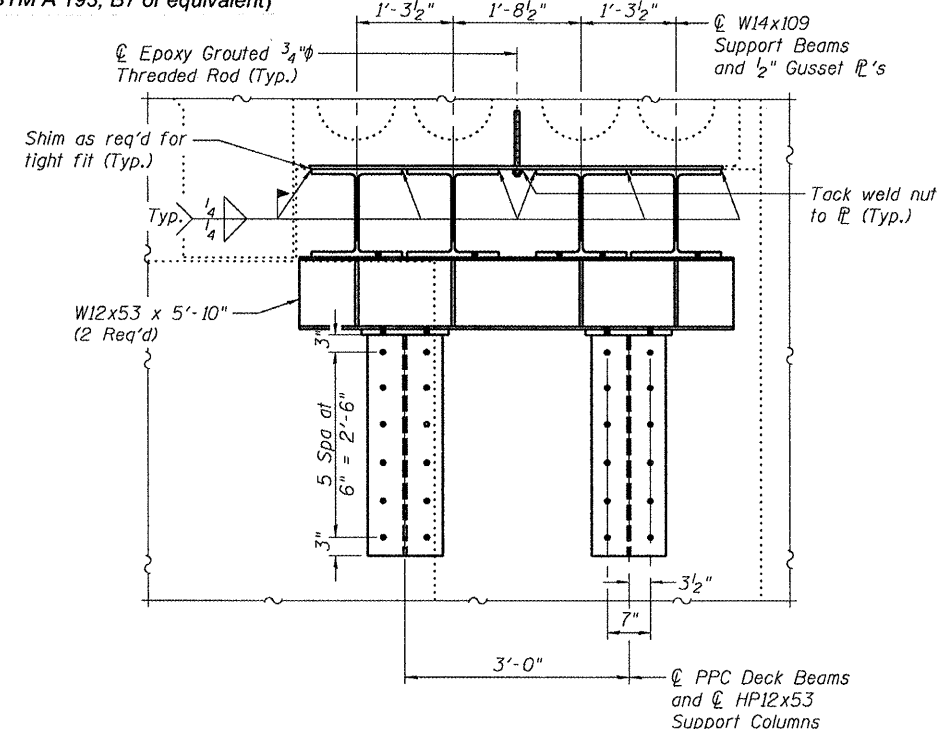


**SECTION C-C**

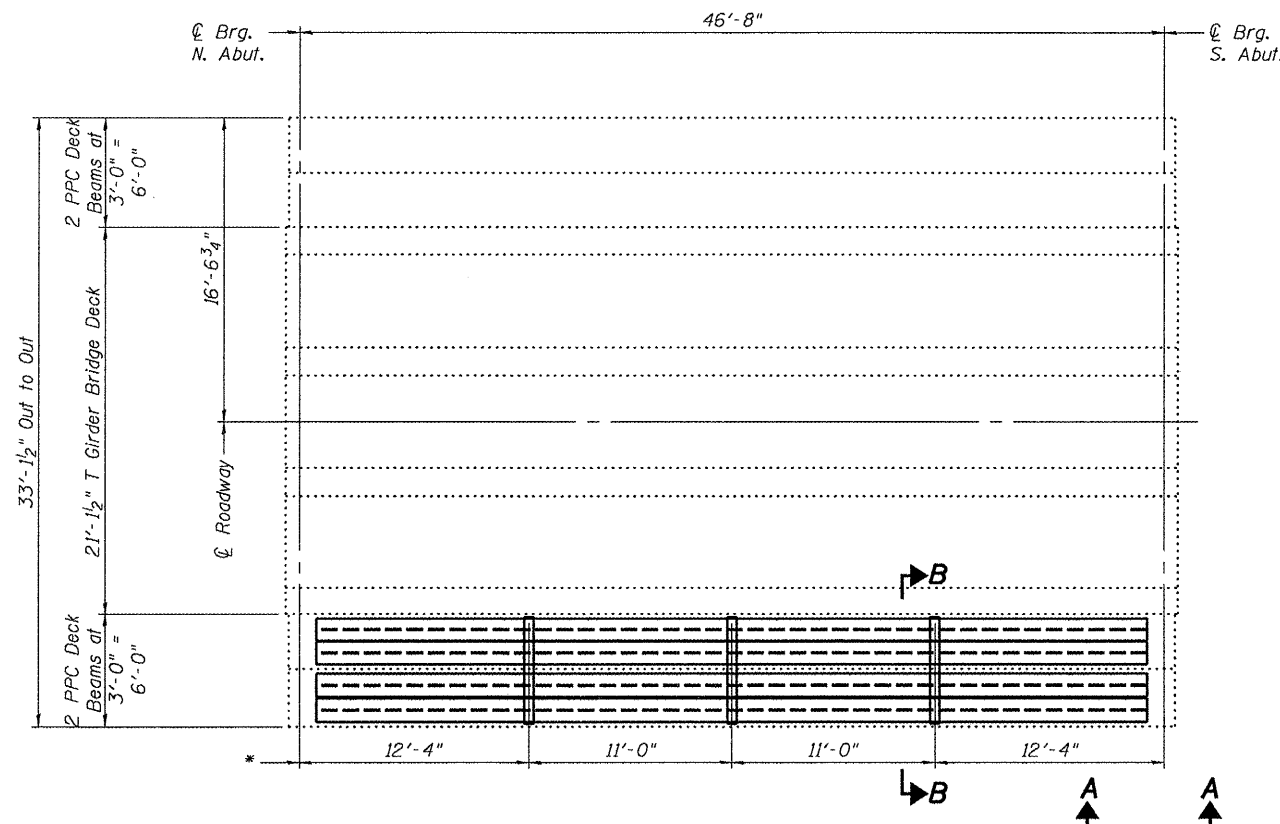


**TRANSVERSE TIE PL'S**

1/2" x 6" x 5'-8" (3 Req'd)



**SECTION B-B**



**PLAN**

\*E Transverse tie PL's (3 per span). Place additional shims at midpoints between tie PL's. Securely weld shims to top flange of support beam. Minimum shim size is 6" x flange width.

\*\*Contractor is to verify beam length prior to ordering material. Other sections meeting the section modulus requirements shown may be allowed subject to approval by the Bureau of Bridges and Structures. Maximum Girder depth = 14". No additional payment will be allowed if the contractor chooses a heavier steel section than the one specified in the plans



DESIGNED Victor H. Dele  
CHECKED Adrian F. Holloway  
DRAWN Drew Christopher  
CHECKED VHV ATH

EXAMINED [Signature]  
PASSED [Signature]

**TOTAL BILL OF MATERIAL**

ITEM	UNIT	QUANTITY
Furnishing and Erecting Structural Steel	Pound	21,440

**PLAN AND ELEVATION**

SHEET NO. 1	F.A. RTE.	SECTION	COUNTY	TOTAL SHEETS	SHEET NO.
1 SHEETS	776	--	HAMILTON	4	4
SN 033-0029		CONTRACT NO.		--	
FED. ROAD DIST. NO.		ILLINOIS FED. AID PROJECT			

Expires: November 30, 2010