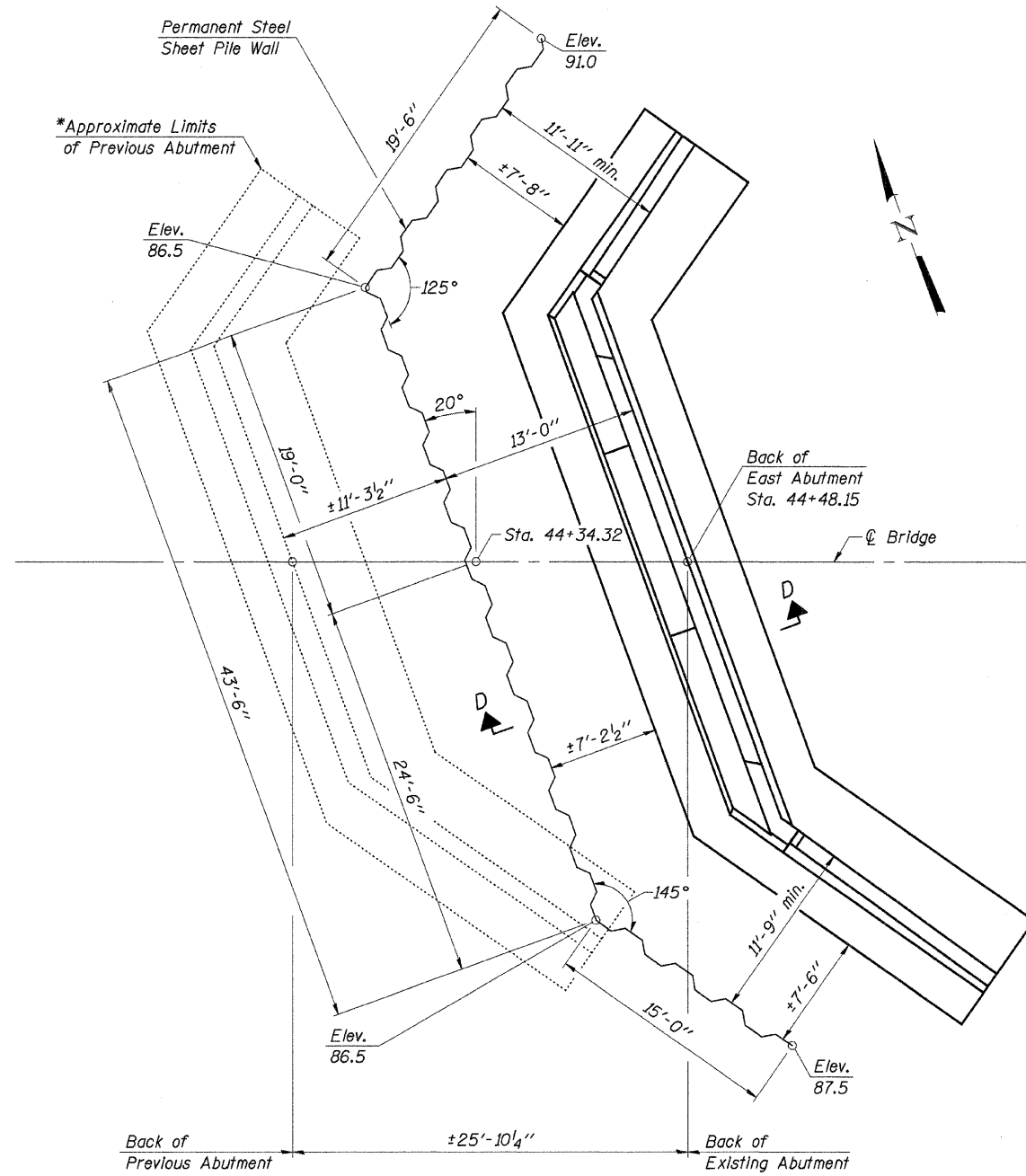


ROUTE NO.	SECTION	COUNTY	TOTAL SHEETS	SHEET NO.
C.H. 11	06-00002-01-BR	DEKALB	20	6
ILLINOIS				

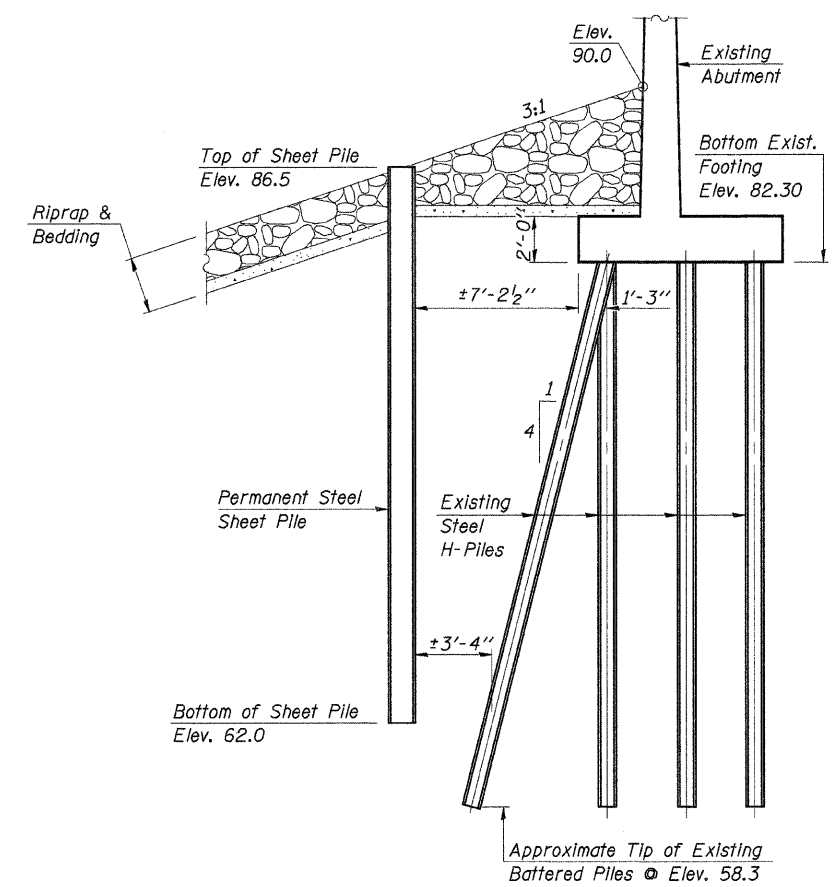
Contract No. 87366



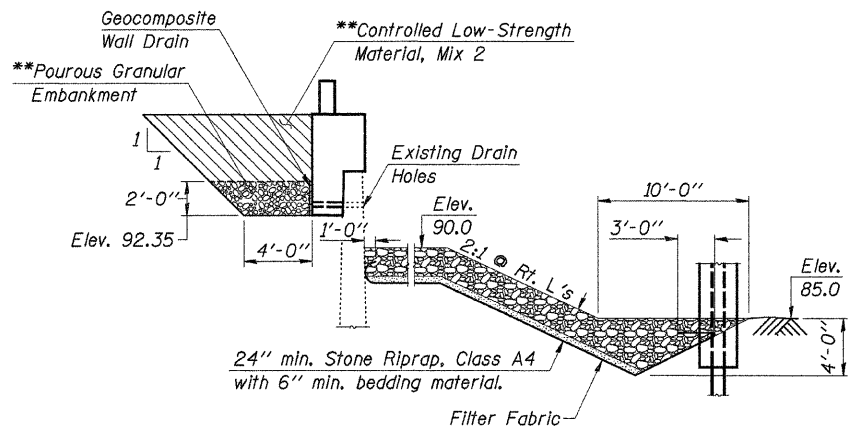
**PERMANENT STEEL SHEET PILE LOCATION PLAN**  
 Minimum Required Effective Section Modulus = 13.9 cu. in./ft.  
 (See Proposal for Effective Section Modulus associated with available sheet pile sections.)

\*Note: Remnants of a previous abutment may be encountered during the driving of permanent steel sheet piling. If encountered, portions of the previous abutment interfering with the driving of sheet piling shall be removed, and the cost of removing the interfering portions of the abutment shall be included in the cost of Permanent Steel Sheet Piling.

DESIGNED	J.A.M.
CHECKED	A.R.K.
DRAWN	S.A.P.
CHECKED	A.R.K. & J.A.M.

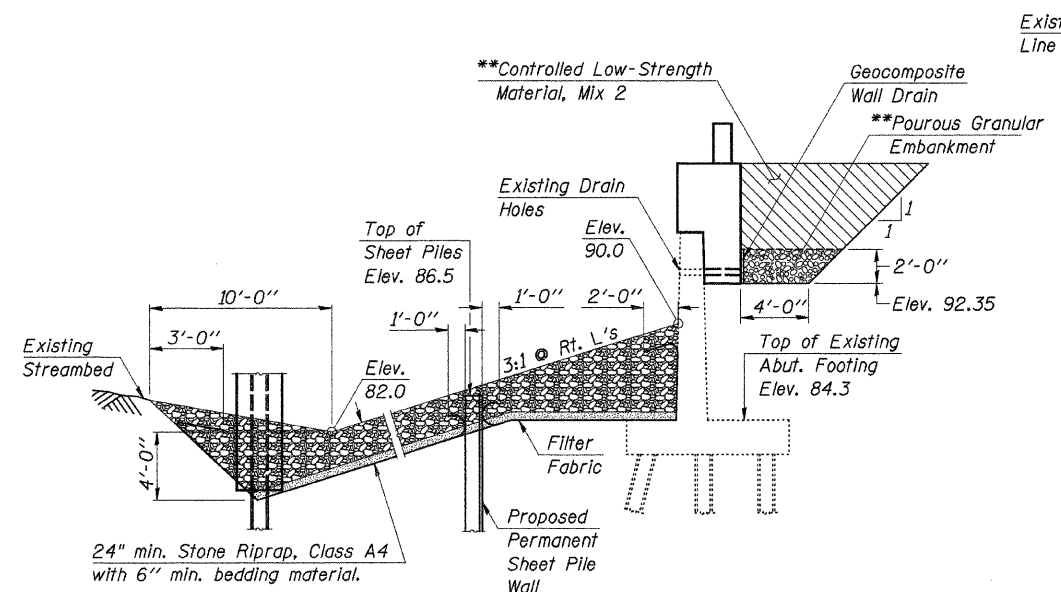


**SEC. D-D**



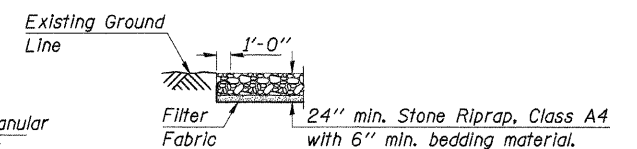
**SECTION A-A**

\*\*Note: Excavation required for the placement of Porous Granular Embankment and Controlled Low Strength Material is included in the cost of Structure Excavation.



**SECTION B-B**

Note: The excavation and aggregate bedding shall be included in the cost of Stone Riprap, Class A4.



**SECTION C-C**

**BILL OF MATERIAL**

ITEM	UNIT	QUANTITY
Permanent Steel Sheet Piling	Sq. Ft.	1,963
Geocomposite Wall Drain	Sq. Yd.	17
Porous Granular Embankment	Cu. Yd.	32
Stone Riprap, Class A4	Ton	574
Filter Fabric	Sq. Yd.	591
Controlled Low-Strength Material, Mix 2	Cu. Yd.	148

**PERMANENT STEEL SHEET PILING AND RIPRAP DETAILS**  
 COUNTY HIGHWAY 11  
 SECTION 06-00002-01-BR  
 DEKALB COUNTY  
 STATION 43+96