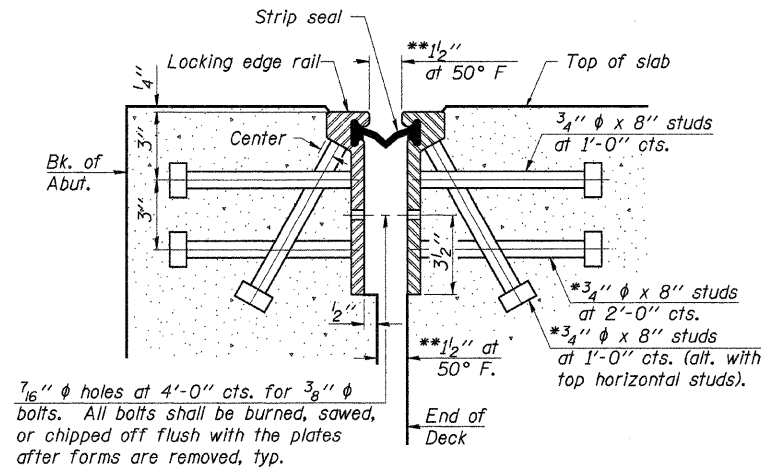


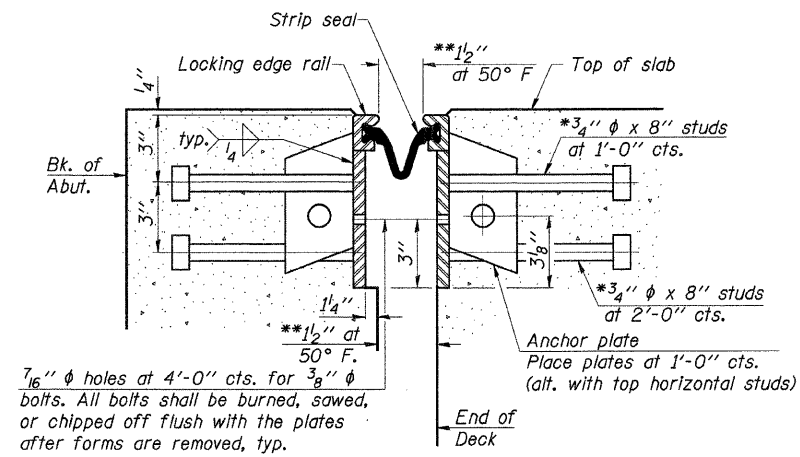
ROUTE NO.	SECTION	COUNTY	TOTAL SHEETS	SHEET NO.
C.H. 11	06-00002-01-BR	DEKALB	20	8
ILLINOIS				

Contract No. 87366

*Granular or solid flux filled headed studs conforming to Article 1006.32 of the Std. Specs., automatically end welded.



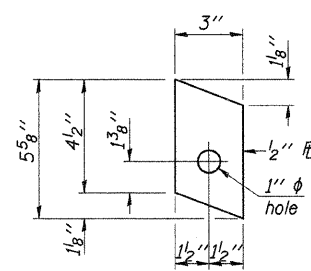
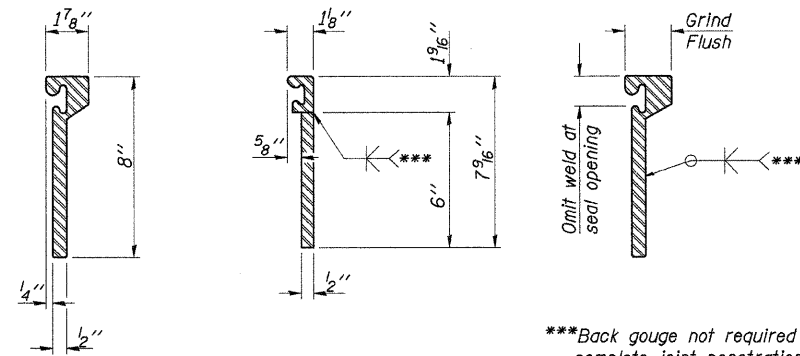
SECTION THRU ROLLED RAIL JOINT
(At Rt. L's to Abut.)



SECTION THRU WELDED RAIL JOINT
(At Rt. L's to Abut.)

Notes:
The strip seal shall be made continuous and shall have a minimum thickness of 1/4". The configuration of the strip seal shall match the configuration of the Locking Edge Rails. Open or "webbed" strip seal gland configurations are not permitted. The gland shall be sized for a maximum rated movement of 4 inches.
The height and thickness of the Locking Edge Rails shown are minimum dimensions. The actual configuration of the Locking Edge Rails and matching strip seal may vary from manufacturer to manufacturer. Flanged edge rails will not be allowed. Locking Edge Rails may be spliced at slope discontinuities and stage construction joints.
The manufacturer's recommended installation methods shall be followed.
All steel components shall be galvanized after fabrication according to Article 520.03 of the Standard Specifications.

****Joint Opening:** The components of the joint system shall be properly aligned and set prior to casting them into the deck or abutment. The joint opening shall be adjusted according to the temperature at the time of placing so that the specified opening will be secured at a temperature of 50° F. The opening shall be reduced 1/16 in. from the amount specified, for each 15° F the temperature at the time of placing exceeds 50° F and increased 1/16 in. from the amount specified, for each 15° F the temperature at the time of placing is below 50° F.



ANCHOR PLATE
(for welded rail)

***Back gouge not required if complete joint penetration is verified by mock-up.

ROLLED (EXTRUDED) RAIL **WELDED RAIL**

LOCKING EDGE RAIL SPLICE
The inside of the locking edge rail groove shall be free of weld residue.

LOCKING EDGE RAILS

BILL OF MATERIAL

Item	Unit	Total
Preformed Joint Strip Seal	Foot	70

DESIGNED	J.A.M.
CHECKED	A.R.K.
DRAWN	S.A.P.
CHECKED	A.R.K. & J.A.M.

EXPANSION JOINT DETAILS

COUNTY HIGHWAY 11
SECTION 06-00002-01-BR
DEKALB COUNTY
STATION 43+96

4440 ASH GROVE
SPRINGFIELD, IL 62711
(217) 793-8600
www.fehr-graham.com

FEHR-GRAHAM & ASSOCIATES, LLC
ENGINEERING AND SCIENCE CONSULTANTS
PROFESSOR S. WOODRUFF, P.E. SCOTT L. BOYD, P.E. SPRINGFIELD, IL

JOB NO.: 47538
FILE: EXP_JOINT.DGN
DATE: 09/02/08