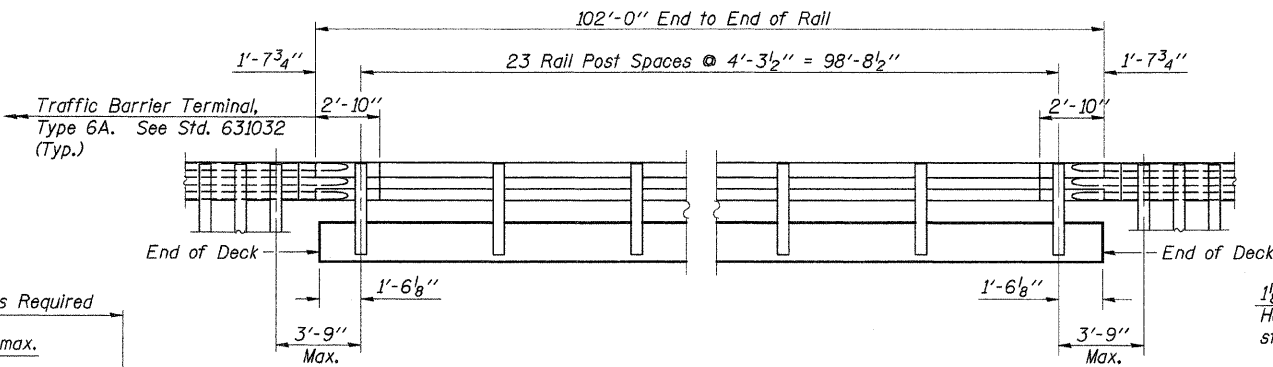
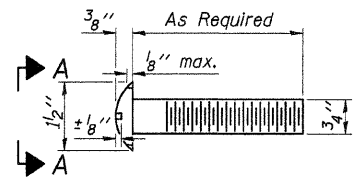


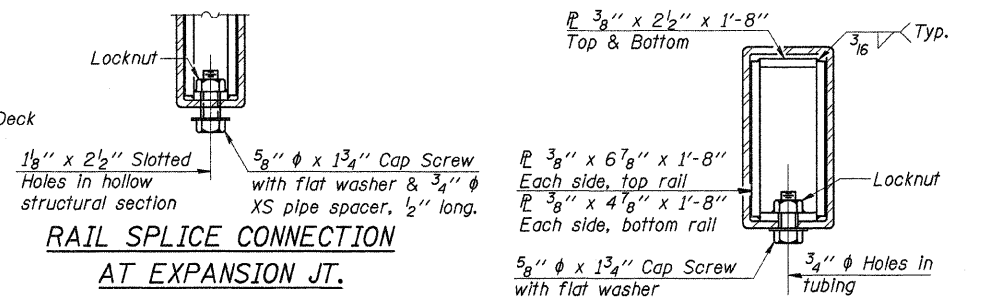
SECTION C-C

DETAIL OF 3/4\"

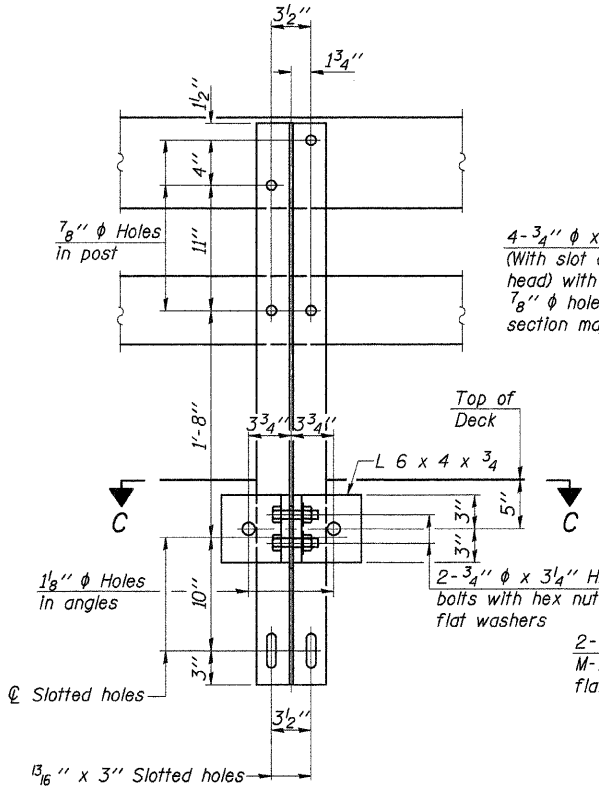
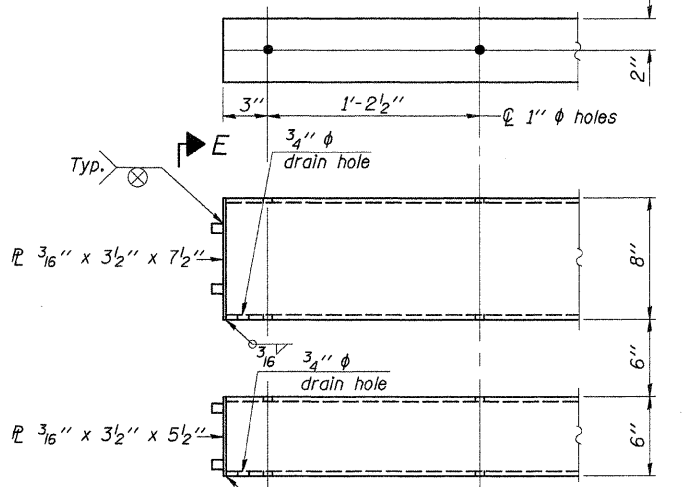


ELEVATION

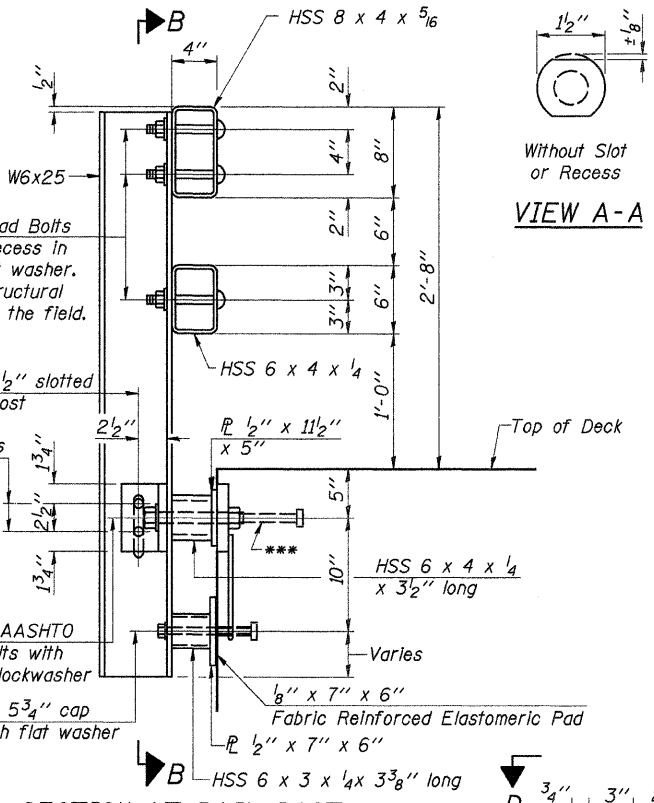
RAIL SPLICE CONNECTION AT EXPANSION JT.



SECTION AT RAIL SPLICE

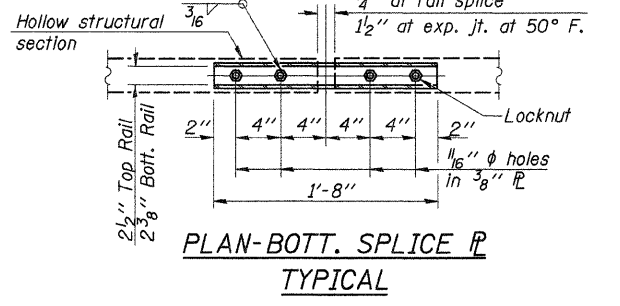
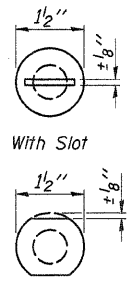


SECTION B-B

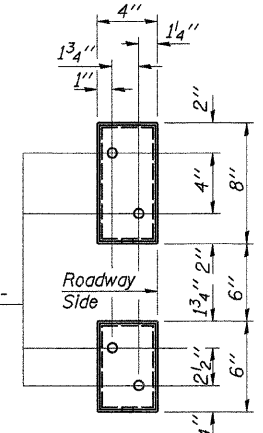


SECTION AT RAIL POST

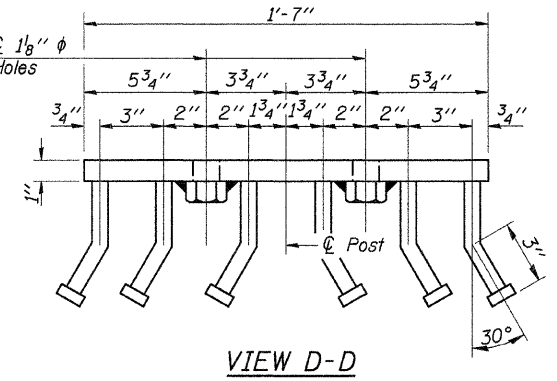
VIEW A-A



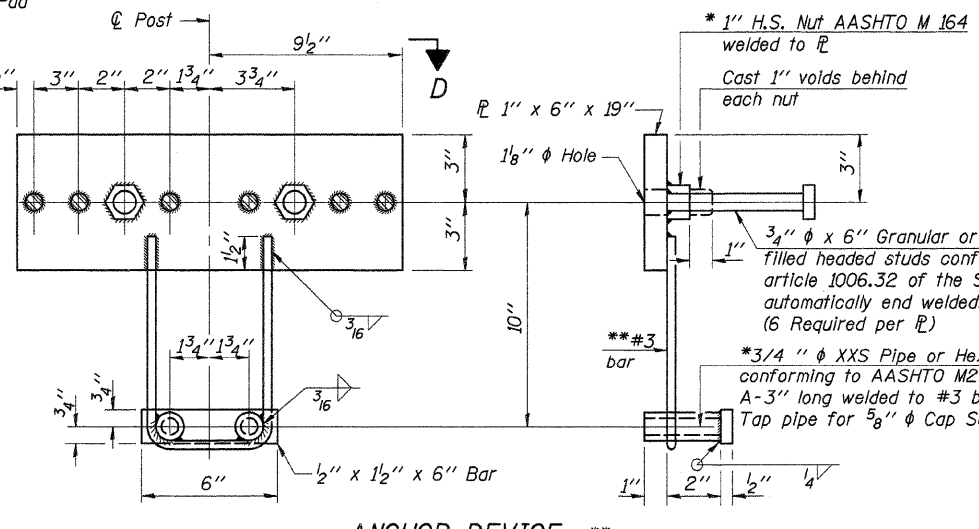
PLAN-BOTT. SPLICE R TYPICAL



VIEW E-E



VIEW D-D



ANCHOR DEVICE

Notes:
 All field drilled holes shall be coated with an approved zinc rich paint before erection.
 For multi-span bridges, sufficient 1/4\"/>

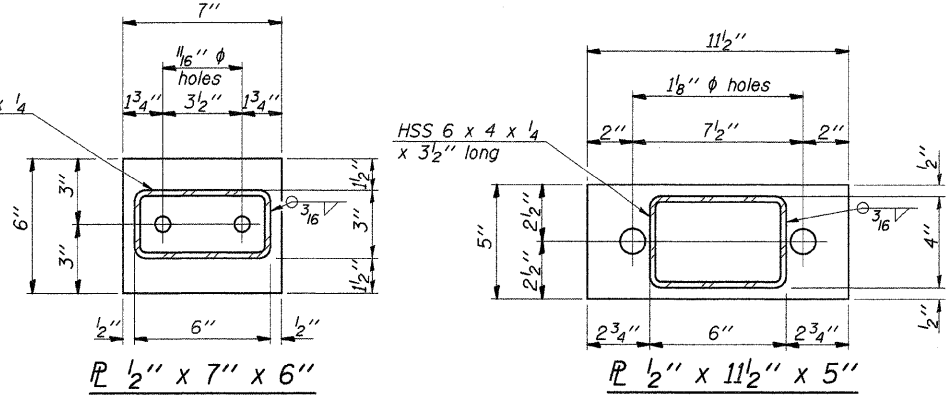
BILL OF MATERIAL

| Item | Unit | Quantity |
|------------------------|------|----------|
| Steel Railing, Type SM | Foot | 204 |

STEEL RAILING, TYPE SM

COUNTY HIGHWAY 11
 SECTION 06-00002-01-BR
 DEKALB COUNTY
 STATION 43+96

| | |
|----------|-----------------|
| DESIGNED | J.A.M. |
| CHECKED | A.R.K. |
| DRAWN | S.A.P. |
| CHECKED | A.R.K. & J.A.M. |



*Threaded areas shall be plugged or blocked off during casting of beam. Galvanized after fabrication.

**Whenever the lower insert assemblies interfere with strand locations, the #3 bars shall be cut and adjusted in order to allow raising or lowering of the lower inserts. Maximum adjustment not to exceed 1/2\"/>