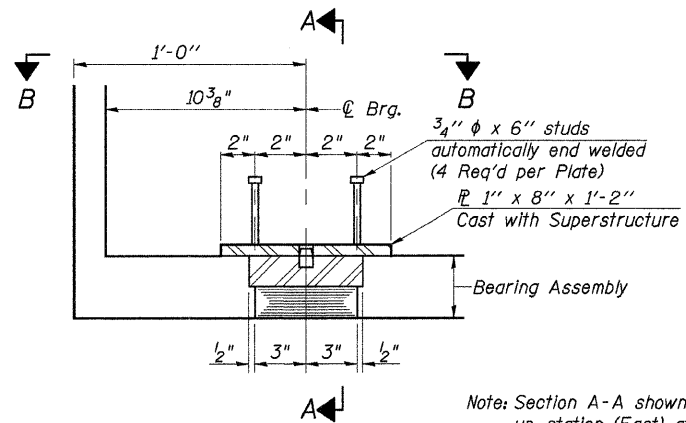
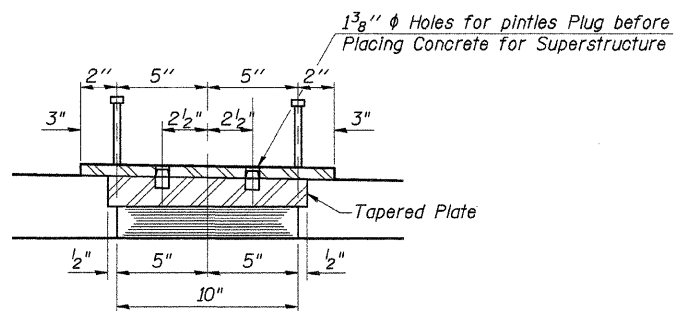


ROUTE NO.	SECTION	COUNTY	TOTAL SHEETS	SHEET NO.
C.H. 11	06-00002-01-BR	DEKALB	20	10
ILLINOIS		Contract No. 87366		

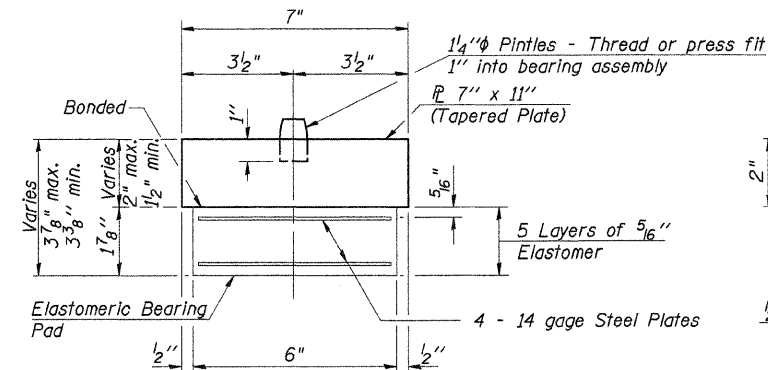


SECTION AT ABUT.
(Dimensions shown Parallel to Center Line of Bridge.)

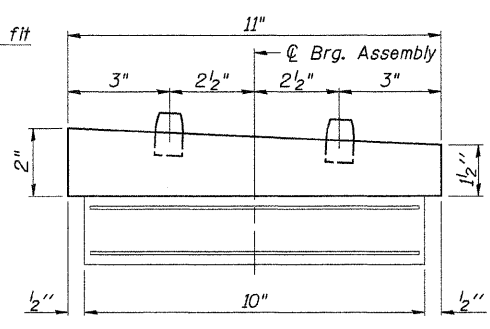


Note: Section A-A shown looking up-station (East) at East Abutment Bearing.

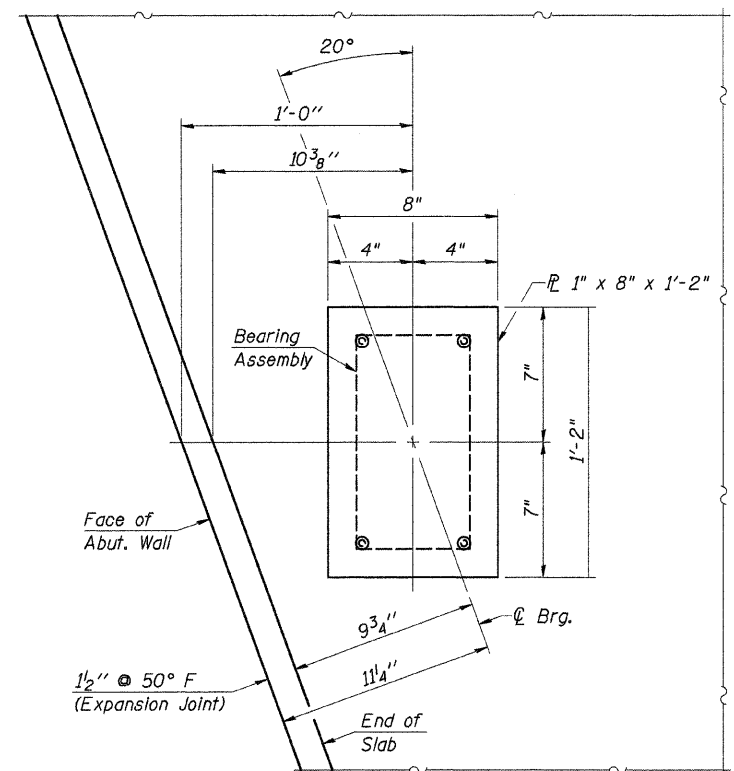
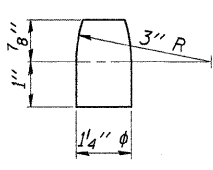
TYPE I ELASTOMERIC EXP. BRG.



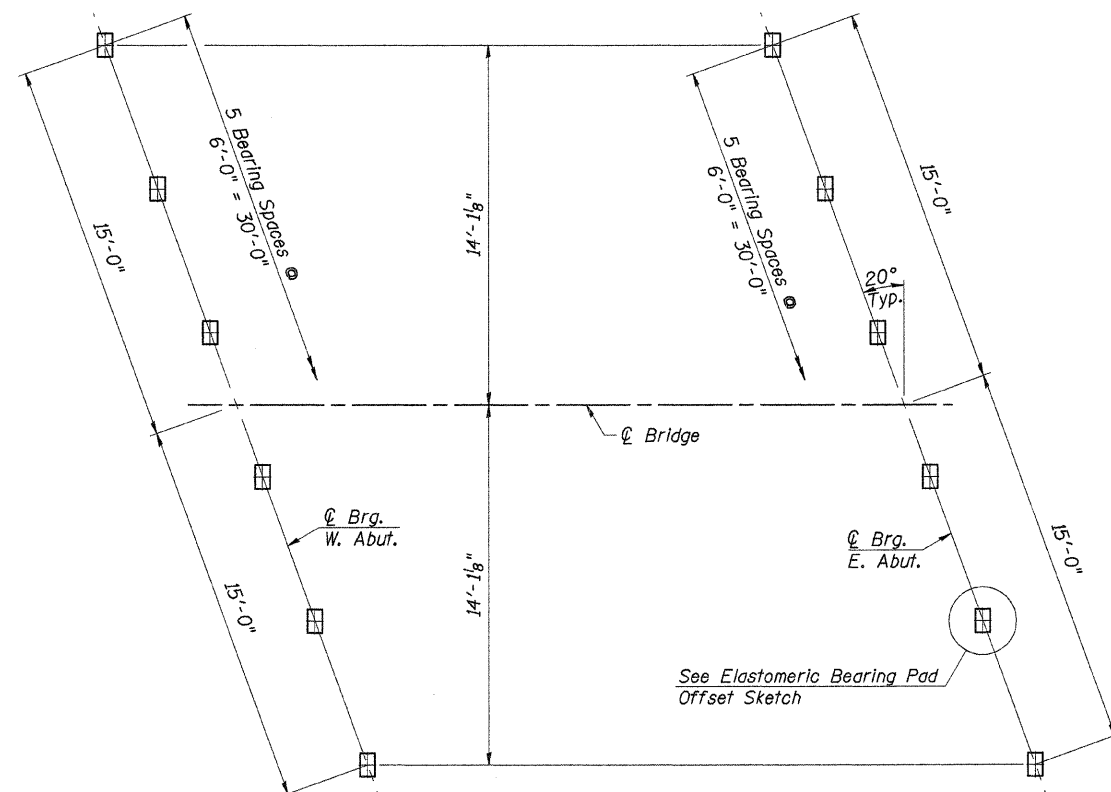
END VIEW



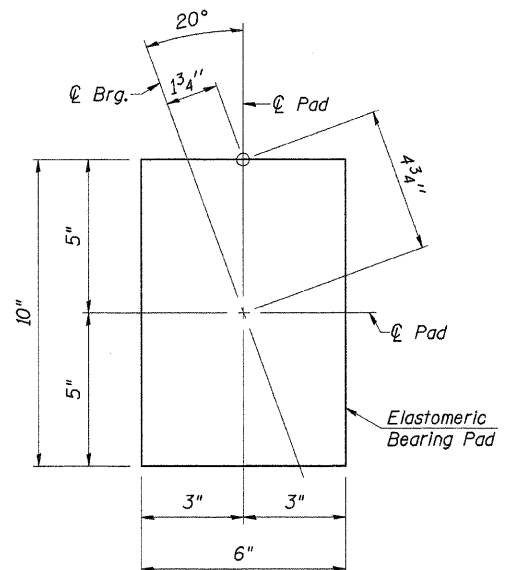
FRONT VIEW



VIEW B-B



ELASTOMERIC BEARING PAD PLACEMENT PLAN



ELASTOMERIC BEARING PAD OFFSET SKETCH

BILL OF MATERIAL

Item	Unit	Total
Elastomeric Bearing Assembly, Type I	Each	12

DESIGNED	J.A.M.
CHECKED	A.R.K.
DRAWN	S.A.P.
CHECKED	A.R.K. & J.A.M.

PI-2E-1 9-3-07

ELASTOMERIC BEARING DETAILS

COUNTY HIGHWAY 11
SECTION 06-00002-01-BR
DEKALB COUNTY
STATION 43+96

4440 ASH GROVE
SPRINGFIELD, IL 62711
(217) 793-8600
www.fehr-graham.com

FEHR-GRAHAM & ASSOCIATES, LLC
ENGINEERING AND SCIENCE CONSULTANTS
PREPARED BY: ROBERT J. ROCHILLI, P.E.
REGISTERED PROFESSIONAL ENGINEER, STATE OF ILLINOIS

JOB NO.: 47538
FILE: BRG.DGN
DATE: 09/02/08