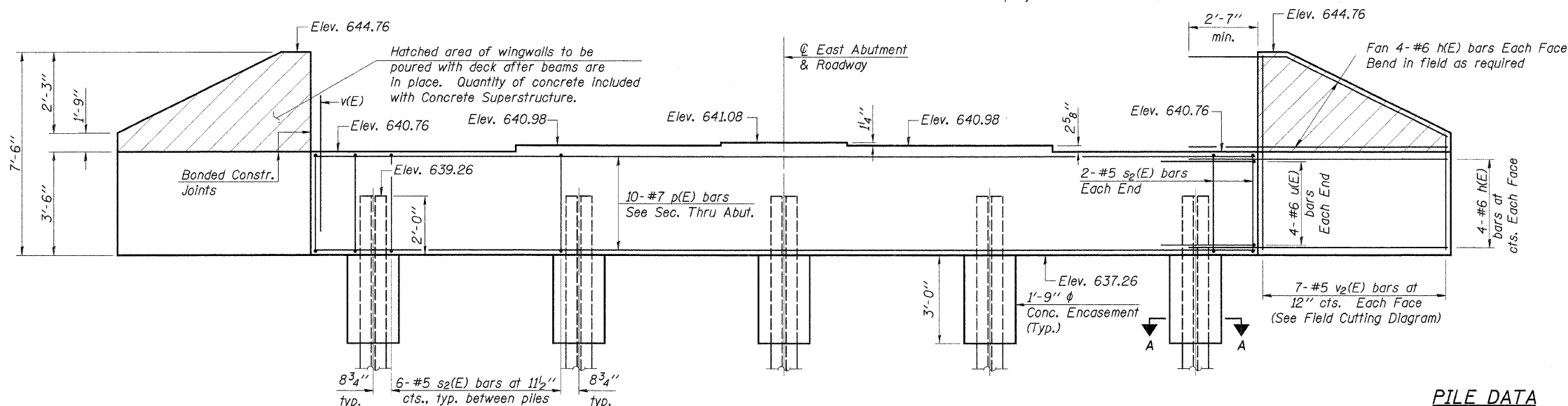


Notes: Four steps monolithically with cap.
Reinforcement bars designated (E)
shall be epoxy coated.



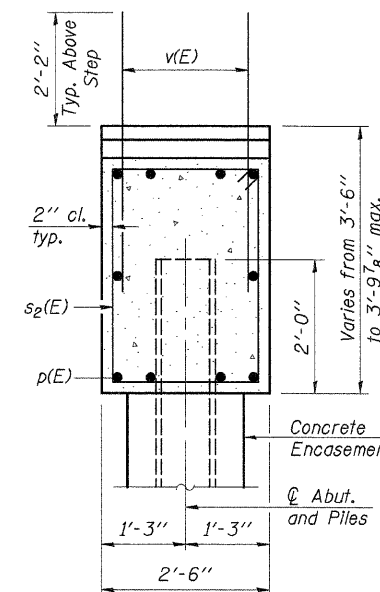
ELEVATION
(Looking West)

PILE DATA

Type..... Steel HP10x42
No. Req'd..... *5
Nominal Required Bearing..... 335 kips
Allowable Resistance Available..... 112 kips
Est. Length..... 42 Feet/Pile

*Includes 1 Test Pile to be driven in a permanent location at the East Abutment.

The steel H-piles shall be according to AASHTO M270 Grade 50.

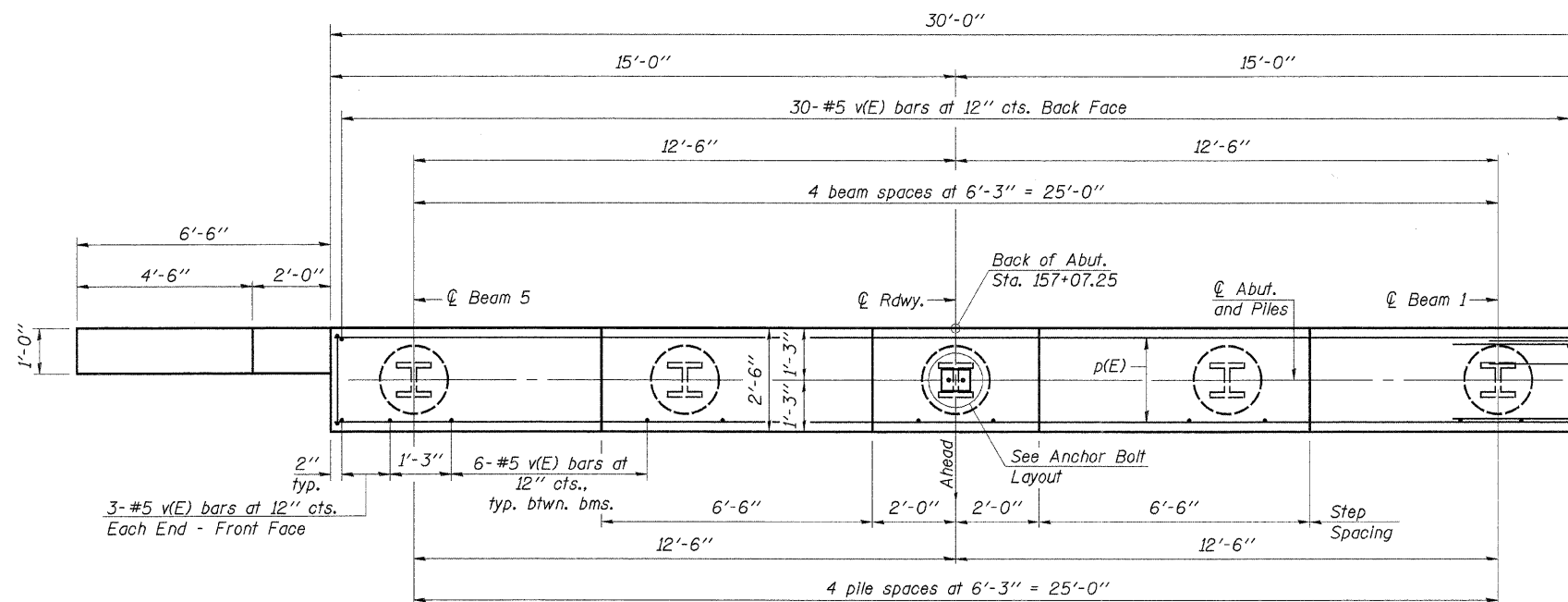


SEC. THRU ABUT.

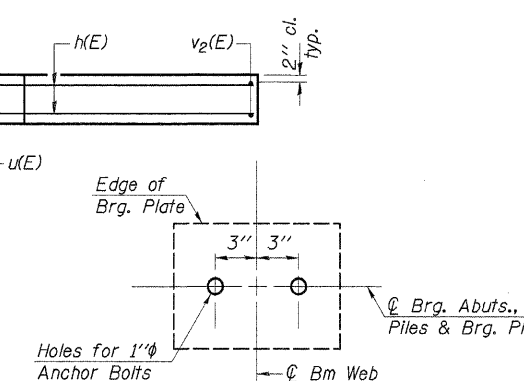
BILL OF MATERIAL

Bar	No.	Size	Length	Shape
h(E)	32	#6	8'-11"	—
p(E)	10	#7	29'-8"	—
s2(E)	28	#5	11'-7"	⊞
u(E)	8	#6	12'-1"	—
v(E)	60	#5	4'-4"	—
v2(E)	14	#5	12'-3"	—
Concrete Structures	Cu. Yd.	11.8		
Reinforcement Bars, Epoxy Coated	Pound	1,970		
Structure Excavation	Cu. Yd.	125		
Steel Piles HP10x42	Foot	168		
Test Pile Steel HP10x42	Each	1		
Concrete Encasement	Cu. Yd.	1.3		
Protective Coat	Sq. Yd.	7		
Porous Granular Embankment (Special)	Cu. Yd.	52		
Geocomposite Wall Drain	Sq. Yd.	32		
Pipe Underdrains for Structures 4"	Foot	65		

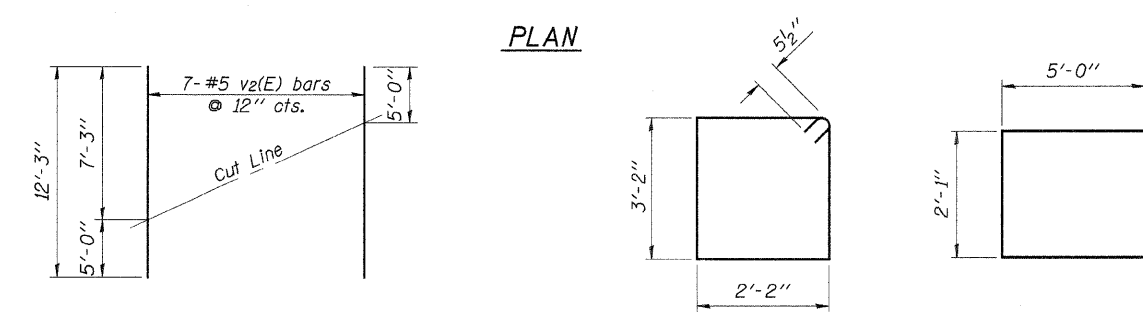
See Sheet 2 of 17 for Abutment Drainage Details.



PLAN



ANCHOR BOLT LAYOUT

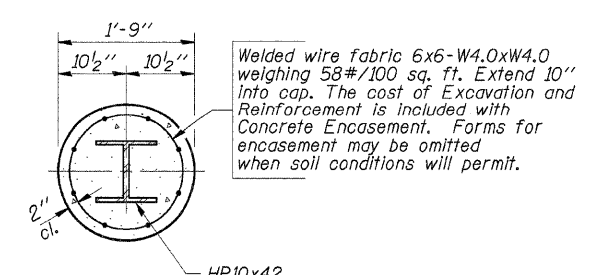


FIELD CUTTING DIAGRAM

Order v2(E) full length. Cut as shown and use remainder of bars in opposite face.

BAR s2(E)

BAR u(E)



SECTION A-A

DESIGNED	A.R.K.
CHECKED	F.J.S. & S.F.M.
DRAWN	S.A.P.
CHECKED	A.R.K. & F.J.S.

AI-0 9-01-03

EAST ABUTMENT

SECTION 03-00147-01-BR
COUNTY HIGHWAY 7
STARK COUNTY
STATION 155+75

4440 ASH GROVE
SPRINGFIELD, IL 62711
(217) 793-8600
oasinc@insightbb.com

FEHR-GRAHAM & ASSOCIATES, LLC
ENGINEERING AND SCIENCE CONSULTANTS
PREPARED BY: ROCKFORD, E. ROCKFORD, E. ROCKFORD, E. ROCKFORD, E. ROCKFORD, E.

JOB NO.: 46808
FILE: 46808ABUT2.DGN
DATE: 10/04/07