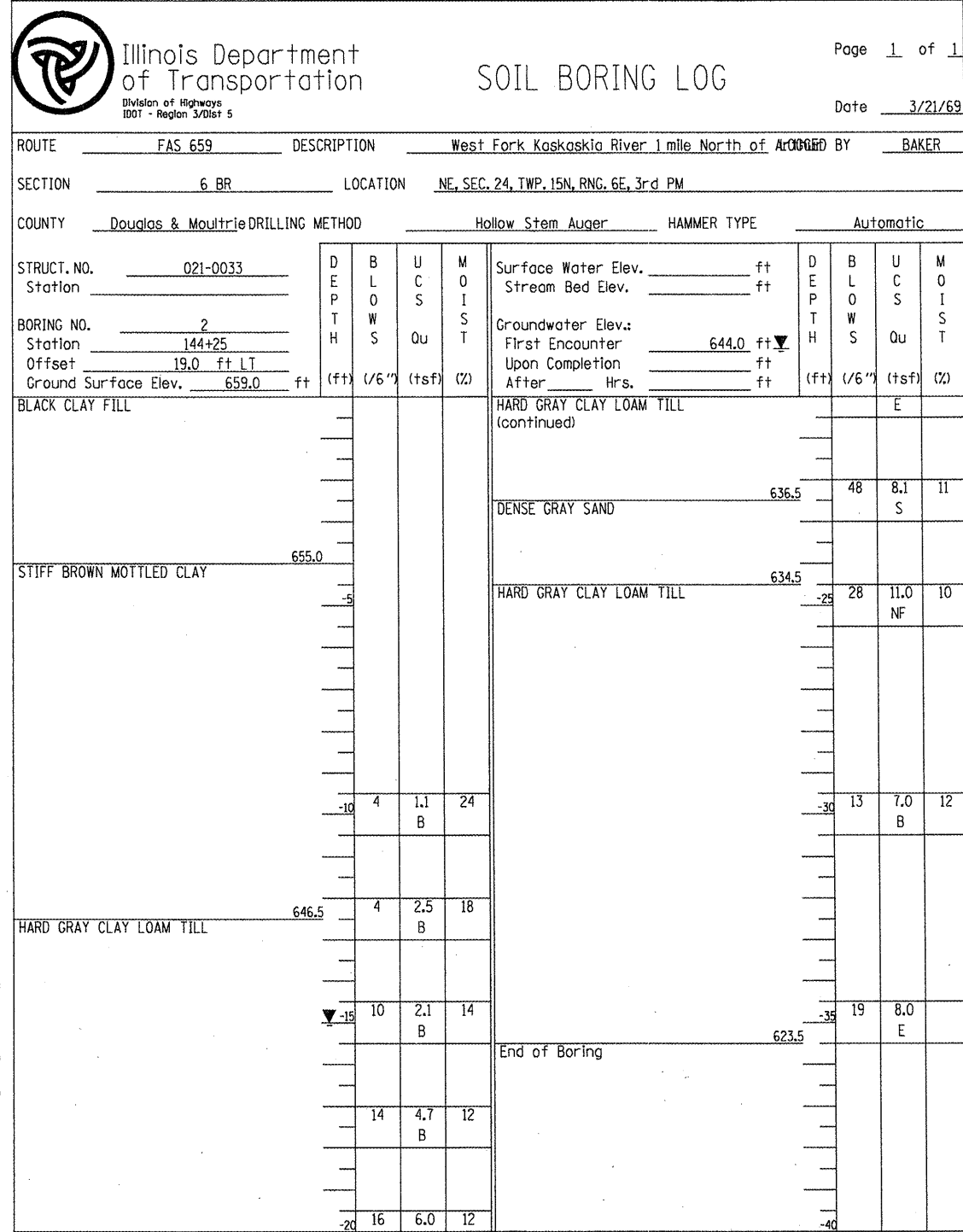


8/7/2008 2:24:51 PM S:\SOILBORING LOGS\DOUGLAS CNTY\021-0033EX1ST.LGPJ

An assumed centerline elevation of 100.00 and station of 10+00 is used when this information is not available.
 The Unconfined Compressive Strength (UCS) Failure Mode is indicated by (B-Bulge, S-Shear, P-Penetrometer)
 The SPT (N Value) is the sum of the last two blow values in each sampling zone (AASHTO T206)

BBS, from 137 (Rev. 8-99)



8/7/2008 2:24:52 PM S:\SOILBORING LOGS\DOUGLAS CNTY\021-0033EX1ST.LGPJ

An assumed centerline elevation of 100.00 and station of 10+00 is used when this information is not available.
 The Unconfined Compressive Strength (UCS) Failure Mode is indicated by (B-Bulge, S-Shear, P-Penetrometer)
 The SPT (N Value) is the sum of the last two blow values in each sampling zone (AASHTO T206)

REVISIONS	
NAME	DATE

ILLINOIS DEPARTMENT OF TRANSPORTATION
BOX CULVERT SOIL BORINGS
STA 144+61.00
 SCALE: VERT. DATE HORIZ. DATE DRAWN BY CHECKED BY